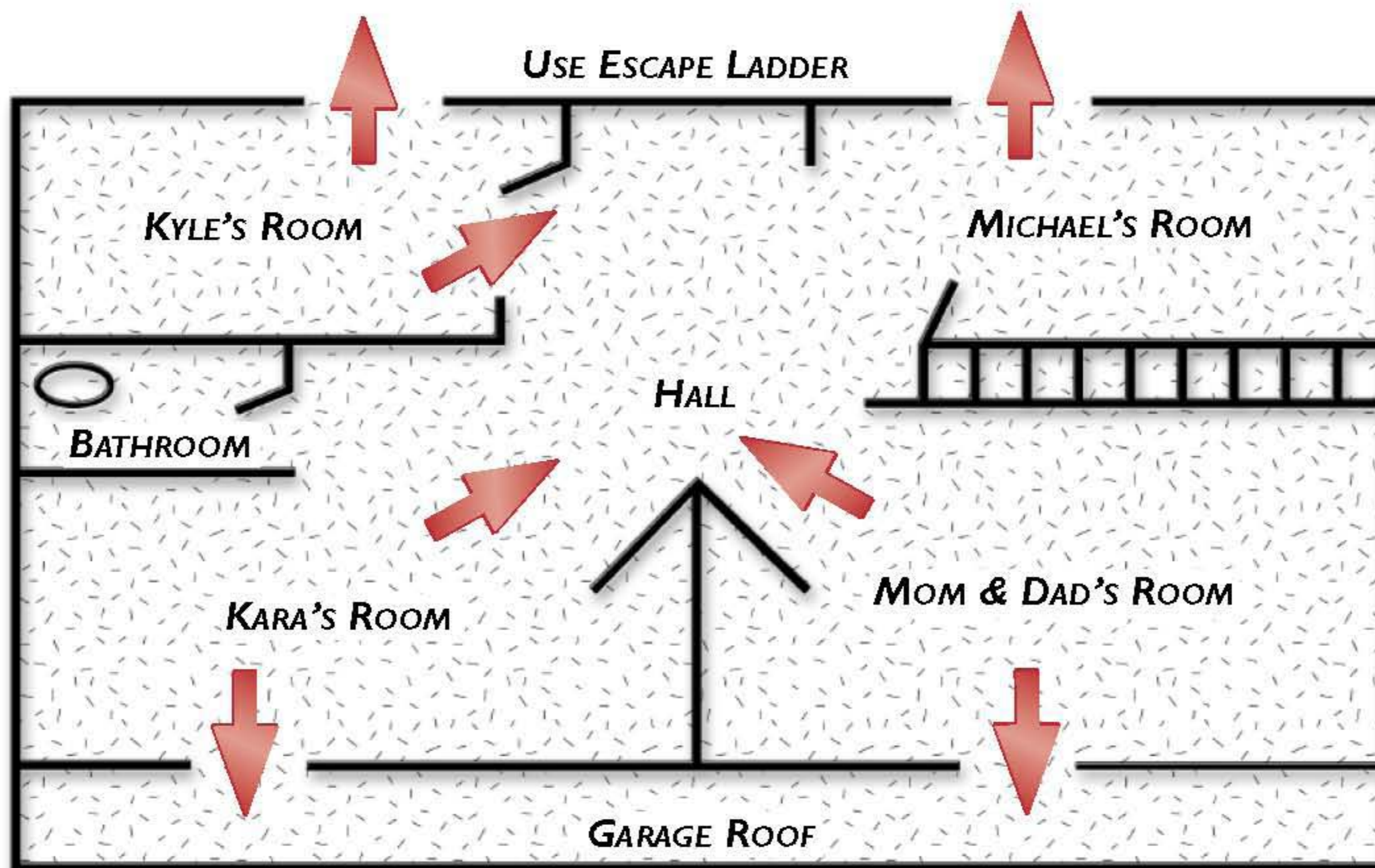


CHICAGO FIRE DEPARTMENT

EXIT DRILL IN THE HOME

► This Is a Family Fire Escape Plan for Fire Safety and Survival.



- SHOW ALL DOORS, WINDOWS, STAIRWELLS, AND HALLS
- MARK TWO ESCAPE ROUTES PER ROOM, ESPECIALLY THE BEDROOMS
- DESIGNATE AN OUTSIDE "MEETING PLACE"
- ASSIGN SOMEONE TO ASSIST THE OLD AND YOUNG
- POST YOUR PLAN WHERE ALL WILL SEE IT (EXAMPLE: REFRIGERATOR)

ADULT FIRE SAFETY

DRILL NUMBER

1

Everyone lies down on their bed, doors closed.

● Sound alarm, horn, whistle, or shout.

● Crawl to door. Feel the door with the back of your hand

● before opening it, to see if it is warm.

● ***IF DOOR IS NOT WARM***, hold your body against the door and ***OPEN IT CAUTIOUSLY*** to find out whether fire, smoke, and heat is on the other side.

● Crawl out if the path is clear; hallways to doors and outside.

● Everyone go to designated “Meeting Place,” pretend to

● notify the Fire Department: CALL “911”

● *“I am reporting a fire at (address).” “My name is ...”*

● *“There is someone missing or STILL in the building.”*

HOME FIRE SAFETY CHECKLIST

Do you have a U.L. approved carbon monoxide detector within 40 ft. of bedrooms?

Have you thrown away multiple attachment plugs?

Are all appliances approved by U.L. (Underwriters Laboratories)?

Are extension cords removed from under rugs, and from doorways?

Do you have at least three foot clearance space for heaters, kerosene lamps, and electrical items?

Is gasoline in an approved container, and stored in places other than the home?

Are paint cans, varnish, or other aerosol cans stored AWAY from furnaces, or gas appliances?

Are your stoves, broilers, and cooking equipment kept clean, and free of grease?

Are all members instructed NOT to smoke in bed?

Are matches and lighters kept up high, in metal containers, AWAY from children.

YES NO

IF YOU ANSWERED “NO” TO ANY QUESTIONS, PLEASE CORRECT ANY POTENTIAL PROBLEM! BE PRO-ACTIVE, NOT REACTIVE!

DRILL NUMBER

2

A. Everyone lies down on their bed, doors closed.

B. Sound alarm, horn, whistle, or shout.

C. Crawl to door. Feel the door with the back of your hand

● before opening it, to see if it is warm.

D. If ***DOOR IS WARM, DO NOT OPEN DOOR.***

E. Crawl to second escape route. Open the window, crawl out

● ***ONLY*** if on the first floor. If on 2nd floor or higher, ***STAY*** in window, yell “Help, Fire,” and wave a shirt or pillowcase for attention. ***DO NOT JUMP.***

F. Everyone else that can, go to designated “Meeting Place,”

● pretend to notify Fire Department: CALL “911”

● *“I am reporting a fire at (address).” “My name is ...”*

● *“There is someone missing or STILL in the building.”*

Do you have a U.L. approved smoke detector on every floor, and within 15 ft. of bedrooms?