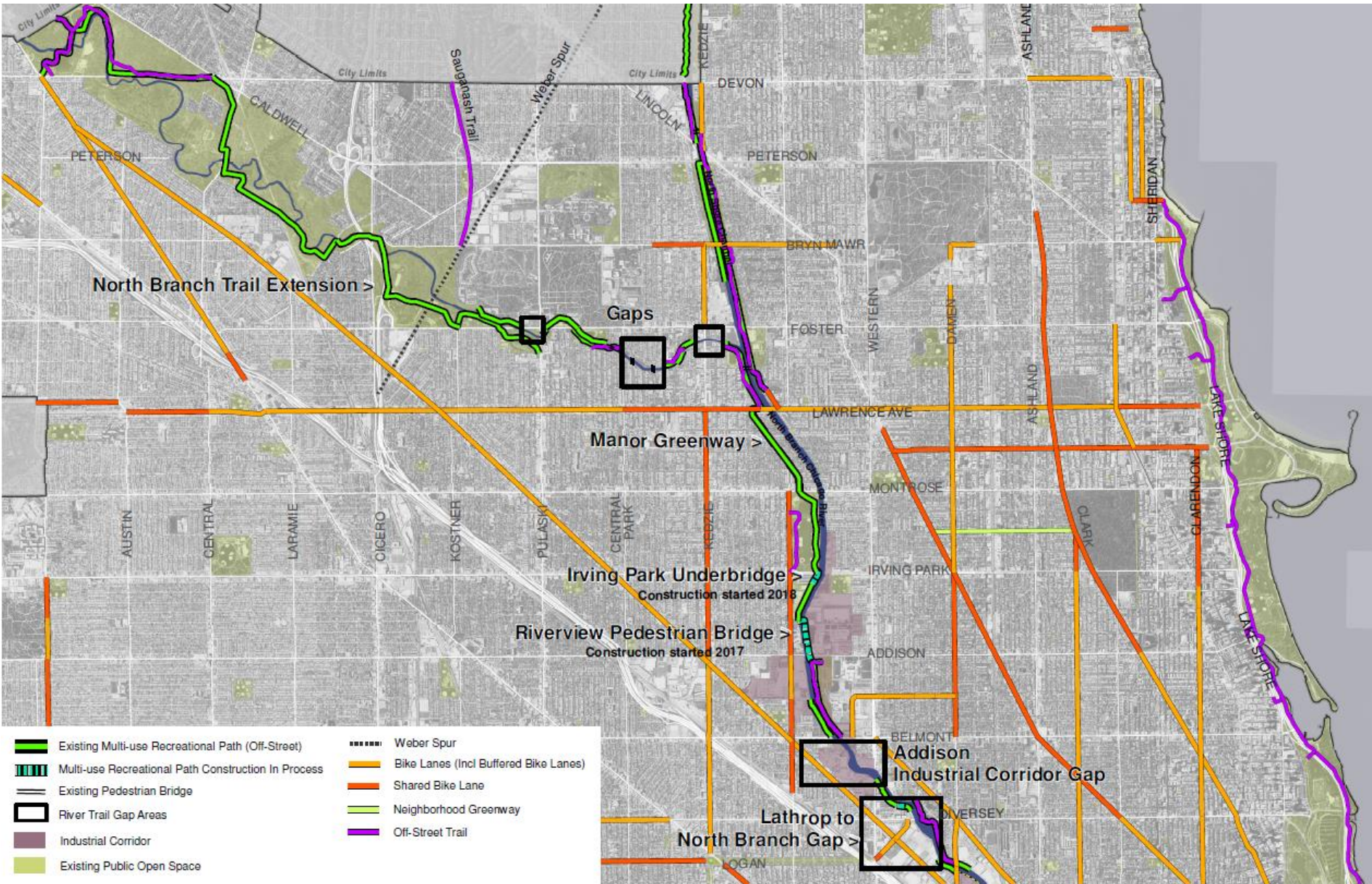


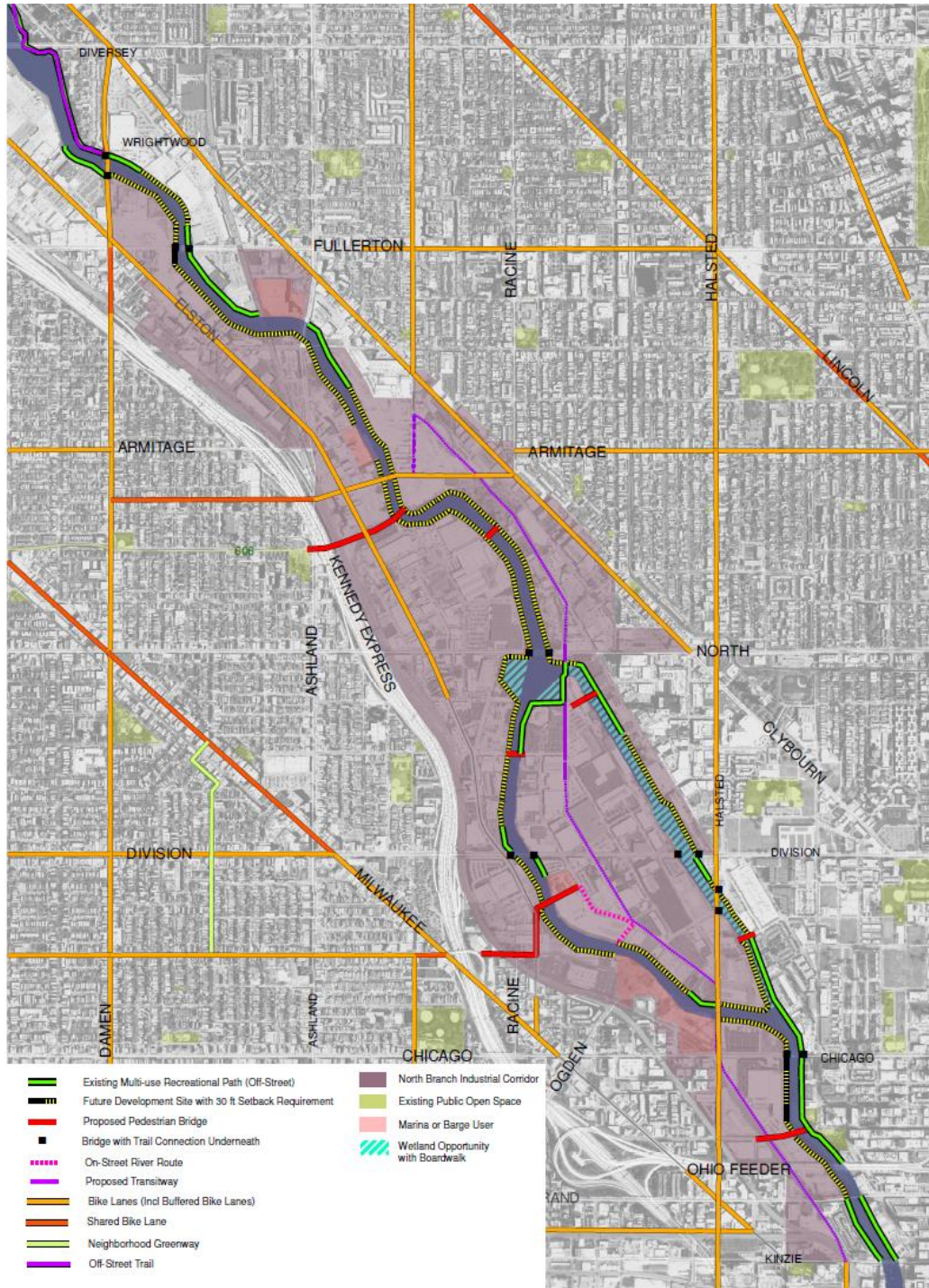
River and Ecology: Trails

North Branch/North Shore Channel: Reach 1



- **2019 IDOT Statewide Planning Grant**
Chicago River Edge Access Study
(Active Transportation Alliance) up to date inventory, overview, and categorization of current bridge and river edge conditions to support trail access to and along the Chicago River. This will result in a recommended program for future trail projects or additional planning studies.
- **Belmont Ave to Lathrop Homes**
(Active Transportation Alliance) walk audit and assessment of trail connection
- **Alderman Samantha Nugent**
Interest to establish a trail connection on North Branch in Albany Park

Chicago River: Reach 2



- **Wild Mile**

Implementation plan to reclaim North Branch Canal for nature and for the community

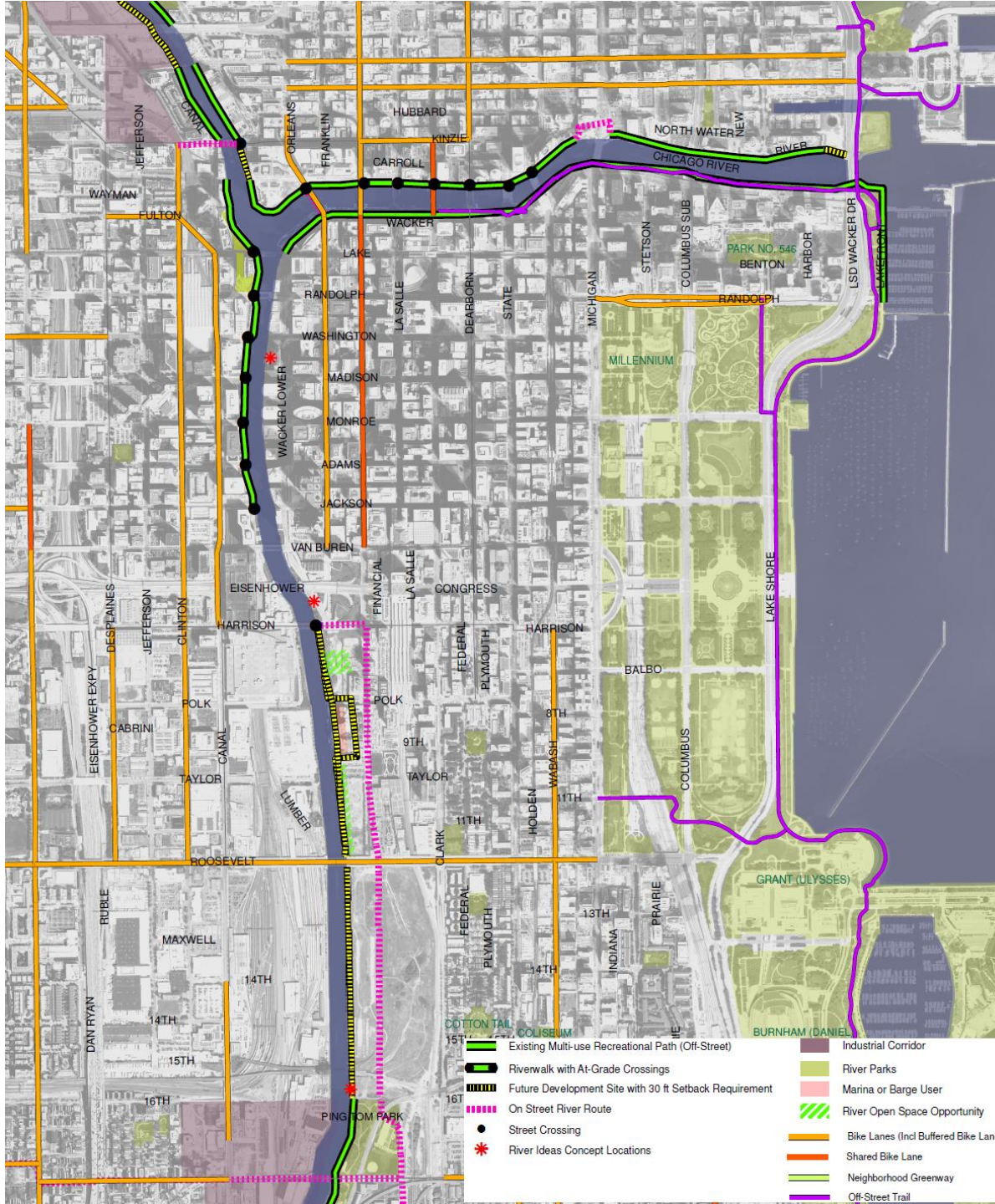


A Place for Everyone

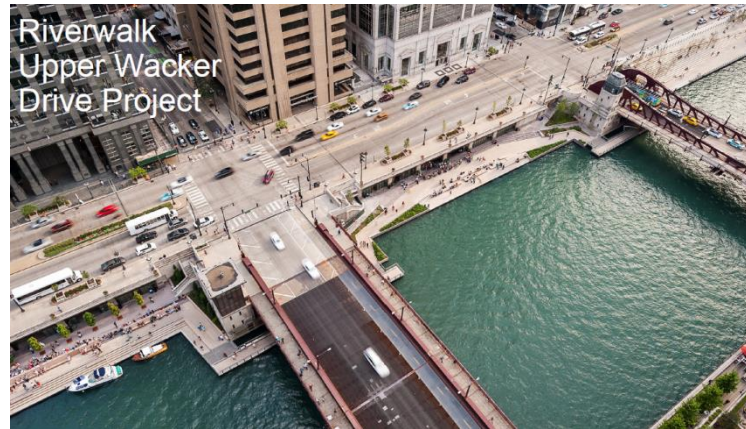
- Safe and continuous trails
- Multiple access points
- Safe access to the river
- Connectivity to city-wide trails and greenways



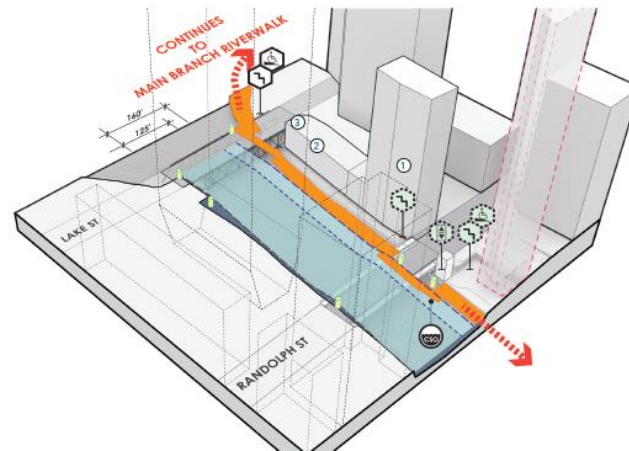
Chicago River Main Branch: Reach 3



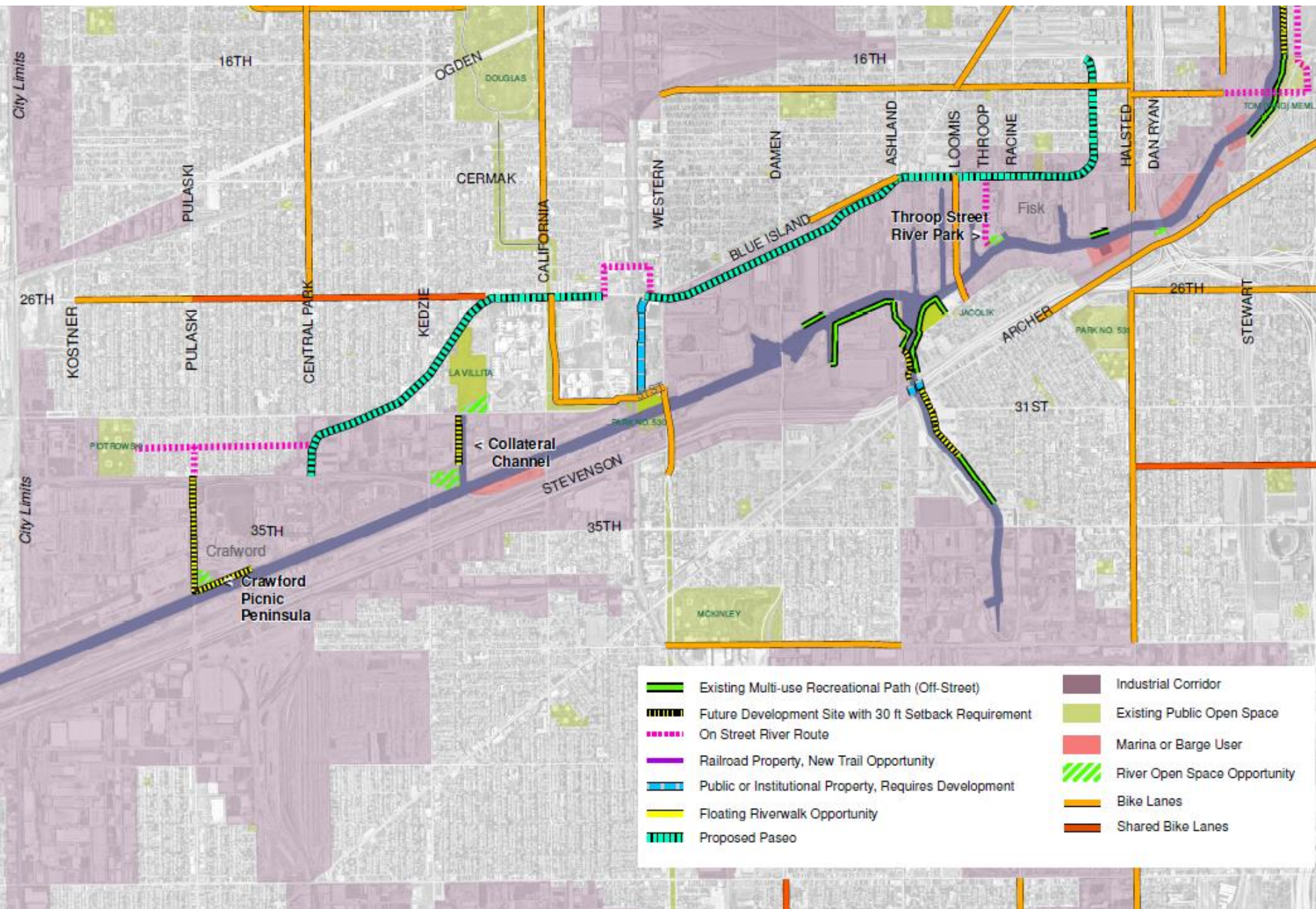
- **Upper Wacker Drive / Riverwalk**
(Active Transportation Alliance) developing concepts for riverwalk on-street connections in the Loop



- **CDOT Riverwalk Extension Study**

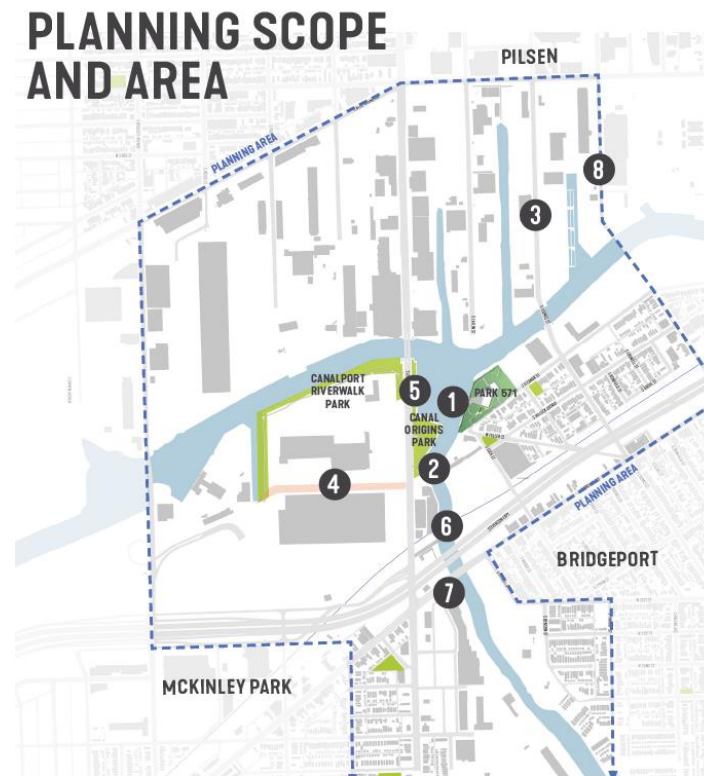


South Branch/Sanitary & Ship Canal: Reach 4

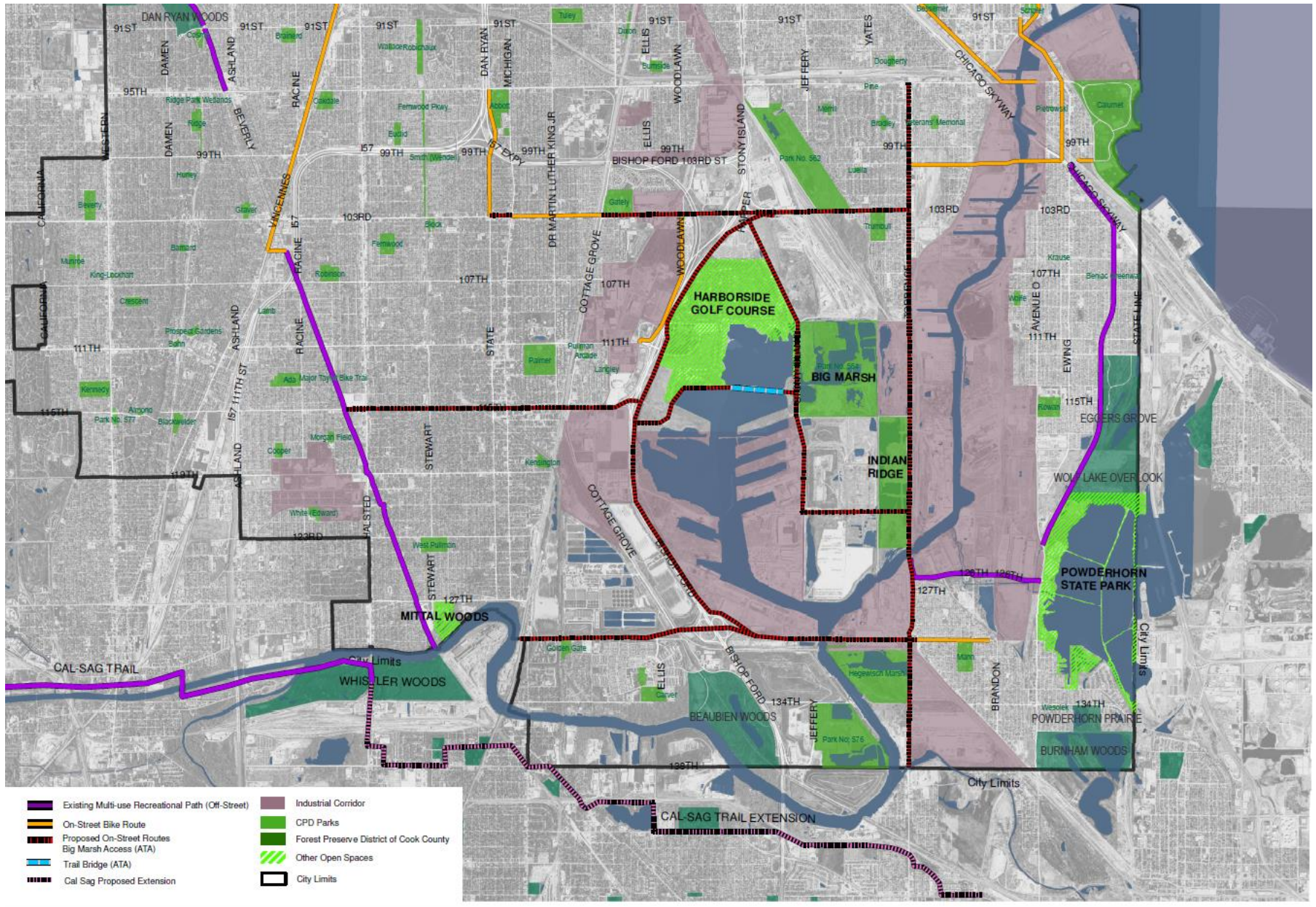


- | | | | |
|---|--|---|------------------------------|
|  | Existing Multi-use Recreational Path (Off-Street) |  | Industrial Corridor |
|  | Future Development Site with 30 ft Setback Requirement |  | Existing Public Open Space |
|  | On Street River Route |  | Marina or Barge User |
|  | Railroad Property, New Trail Opportunity |  | River Open Space Opportunity |
|  | Public or Institutional Property, Requires Development |  | Bike Lanes |
|  | Floating Riverwalk Opportunity |  | Shared Bike Lanes |
|  | Proposed Paseo | | |

- **2019 IDOT Statewide Planning Grant**
Access Improvements to South Branch Parks
(South Branch PAC) implementation plan for a range of access improvements that connect local parks and its adjacent neighborhoods.



Calumet: Reach 5



- Existing Multi-use Recreational Path (Off-Street)
- On-Street Bike Route
- Proposed On-Street Routes
- Big Marsh Access (ATA)
- Trail Bridge (ATA)
- Cal Sag Proposed Extension
- Industrial Corridor
- CPD Parks
- Forest Preserve District of Cook County
- Other Open Spaces
- City Limits

Southeast Chicago Area Wide Plan, 2017

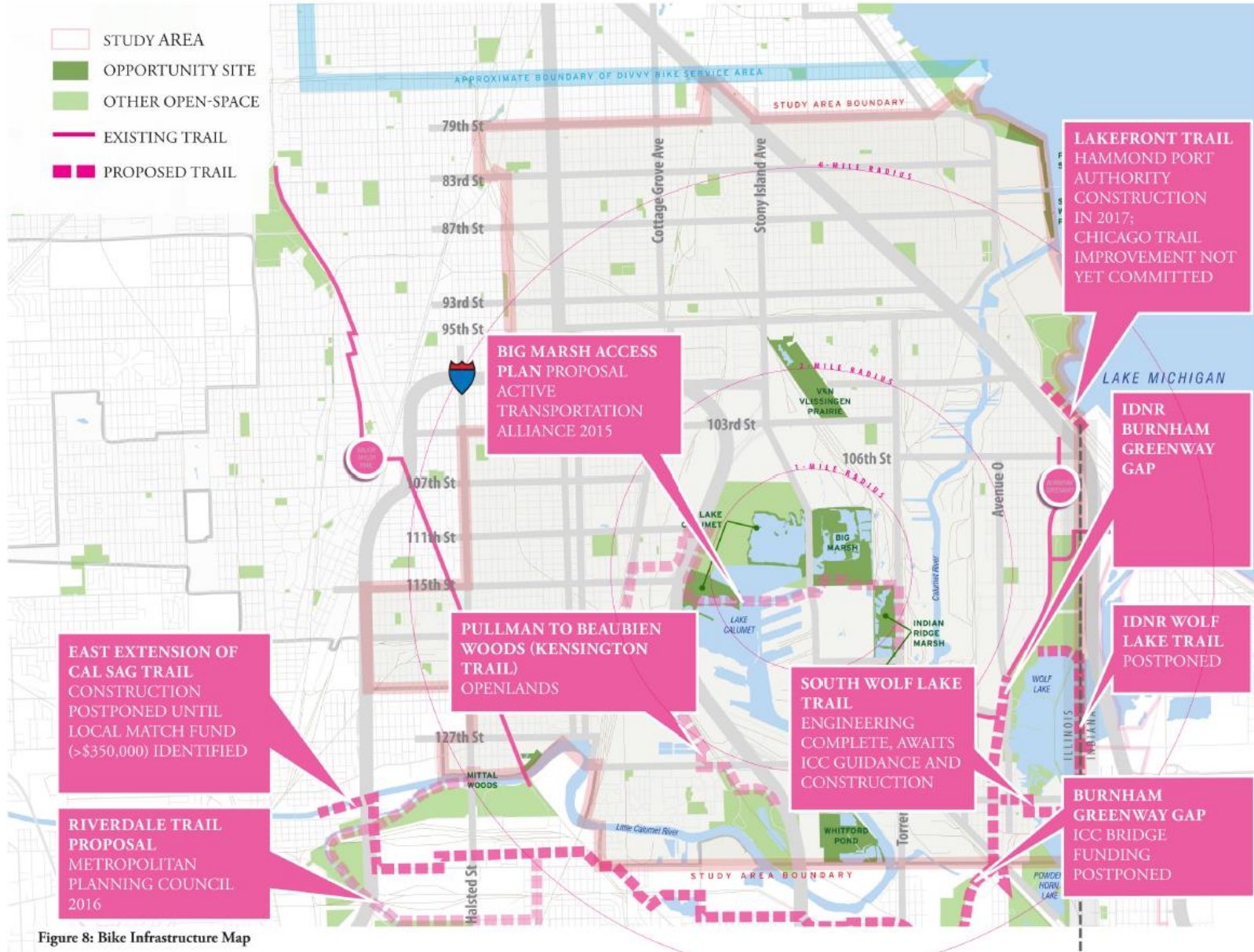
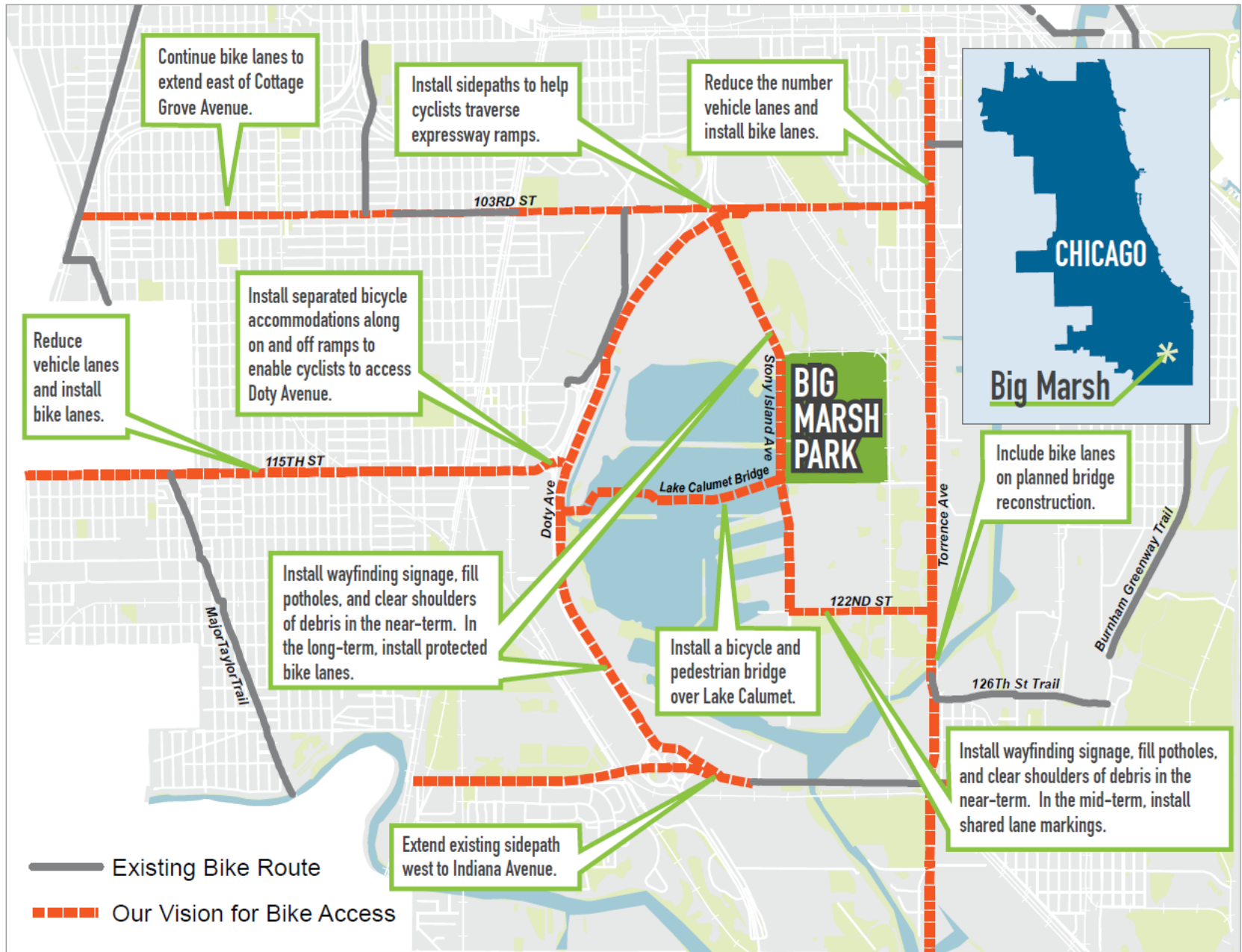
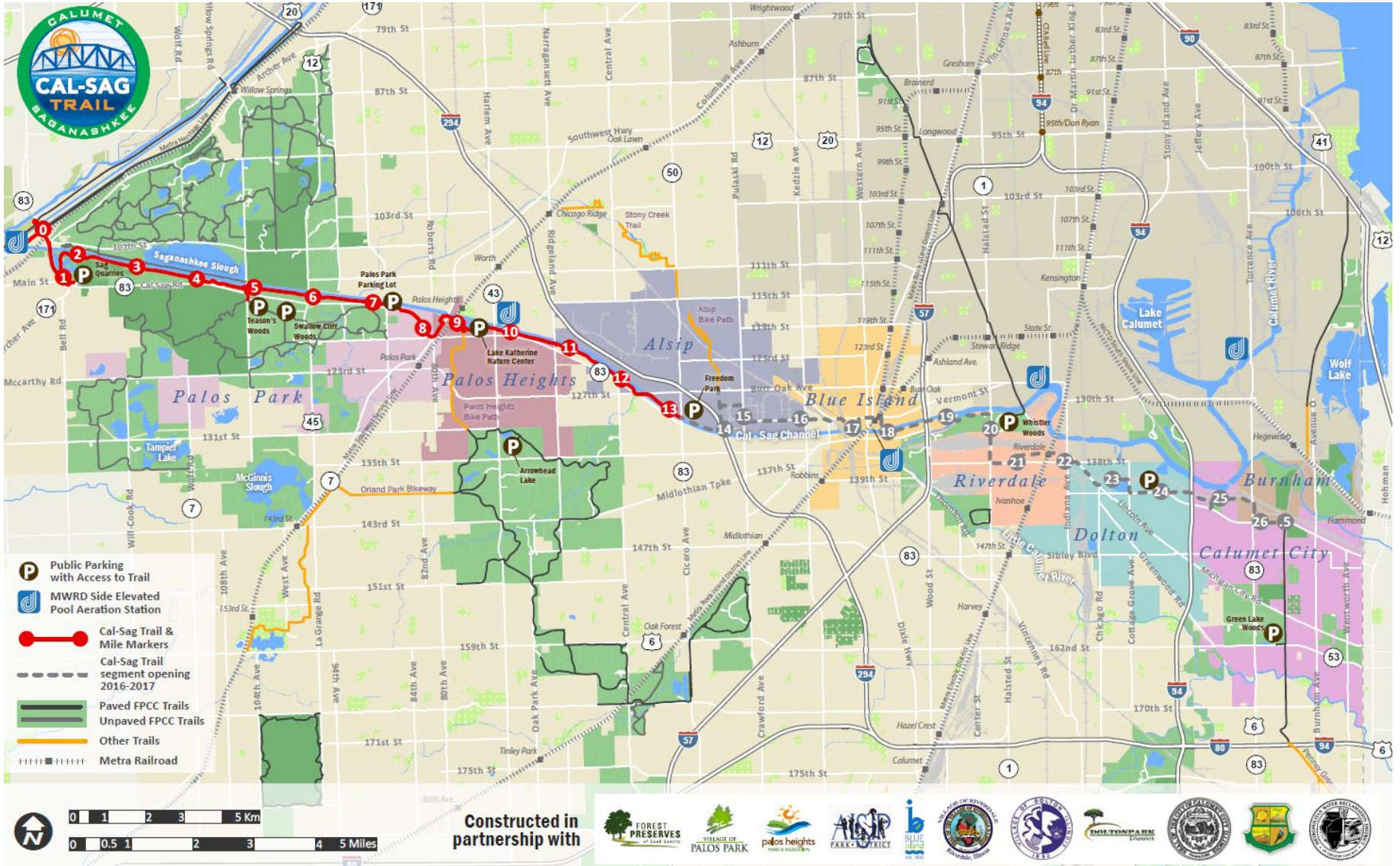


Figure 8: Bike Infrastructure Map

Big Marsh Access Action Plan, Active Transportation Alliance, 2015

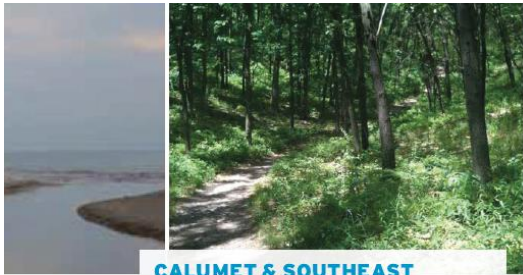


Cal Sag Bike Trail



Constructed in partnership with





CALUMET & SOUTHEAST CHICAGO LAKEFRONT REGION WAYFINDING CONCEPT

September 2016

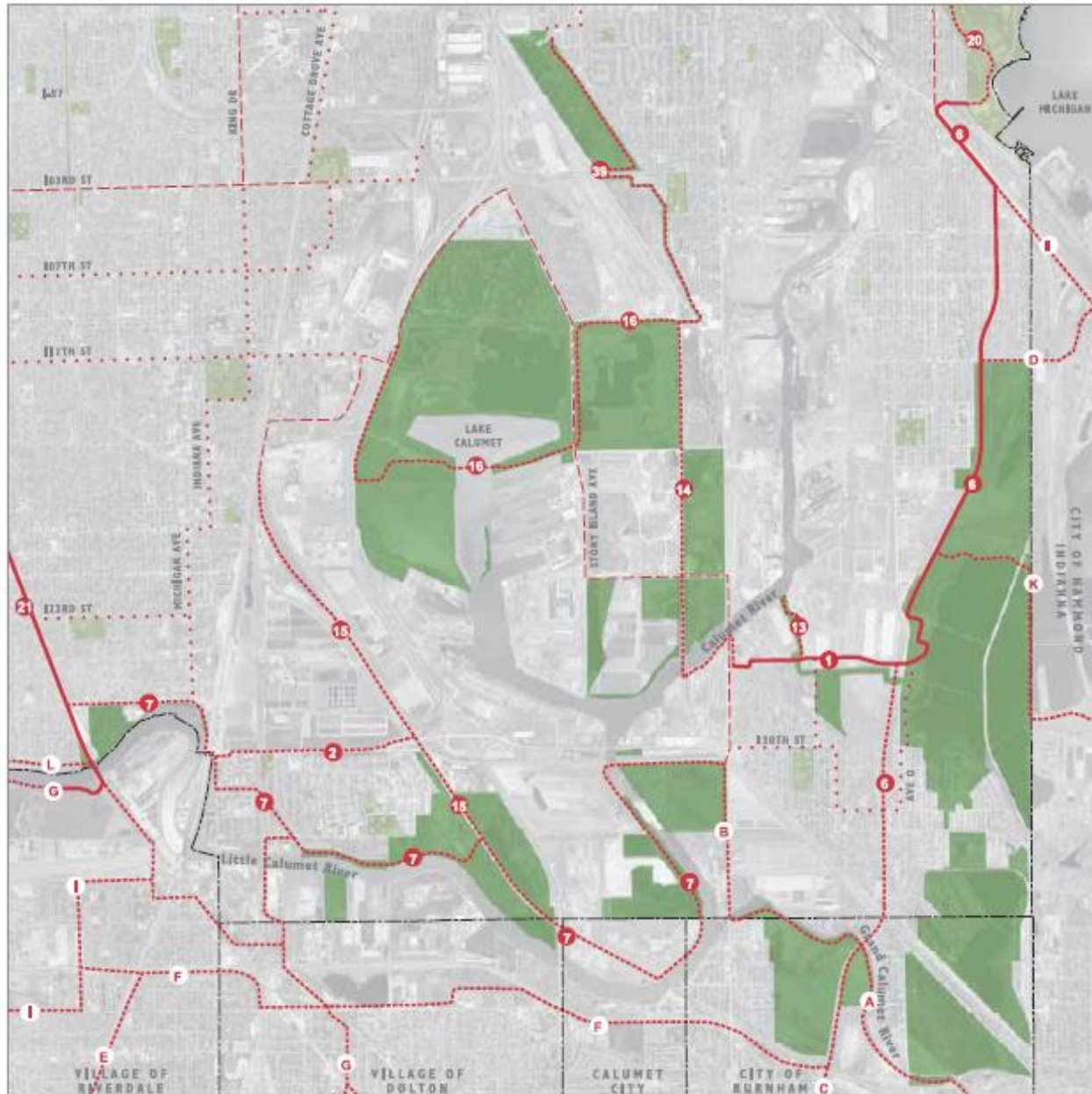
The Lakota Group
sparc, inc
Bluestone + Associates
Atta Planning + Design

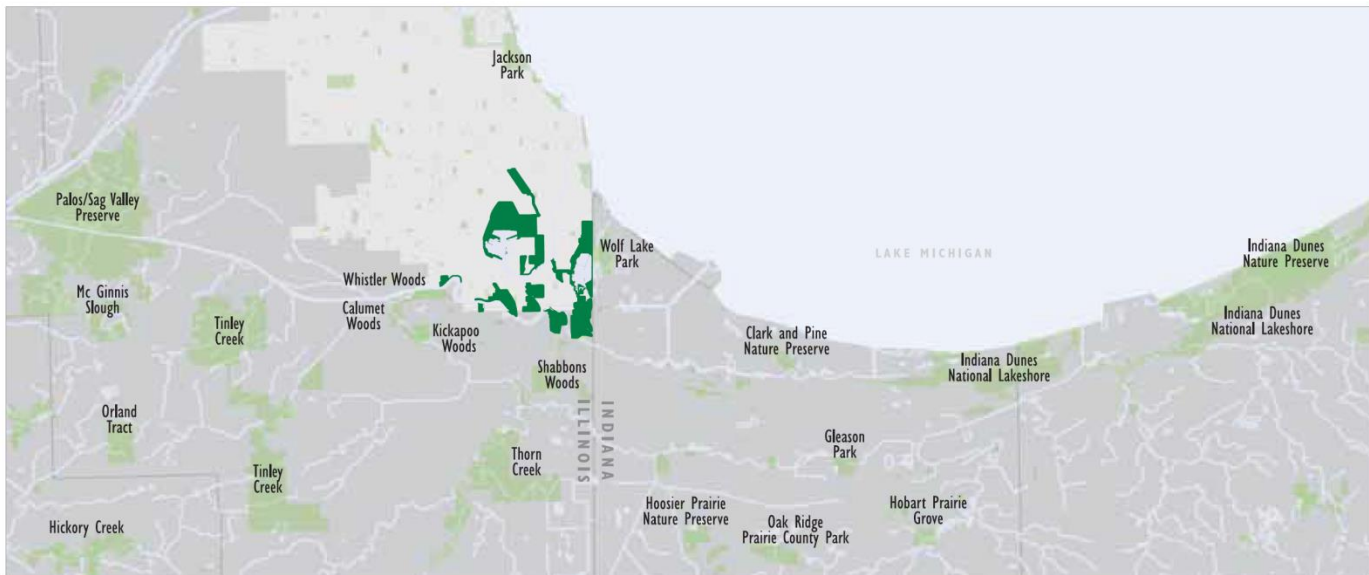


Gaylord & Dorothy Donnelly Foundation



Calumet Open Space Reserve Maps





The geography of the Calumet Bi-State Region is based upon the U.S. National Park Service Calumet Ecological Park Feasibility Study (Aug. 1998) and the I&M Canal National Heritage Corridor.

REGIONAL TRAILS AND GREENWAYS *

- Existing Trail
- Proposed Trail

