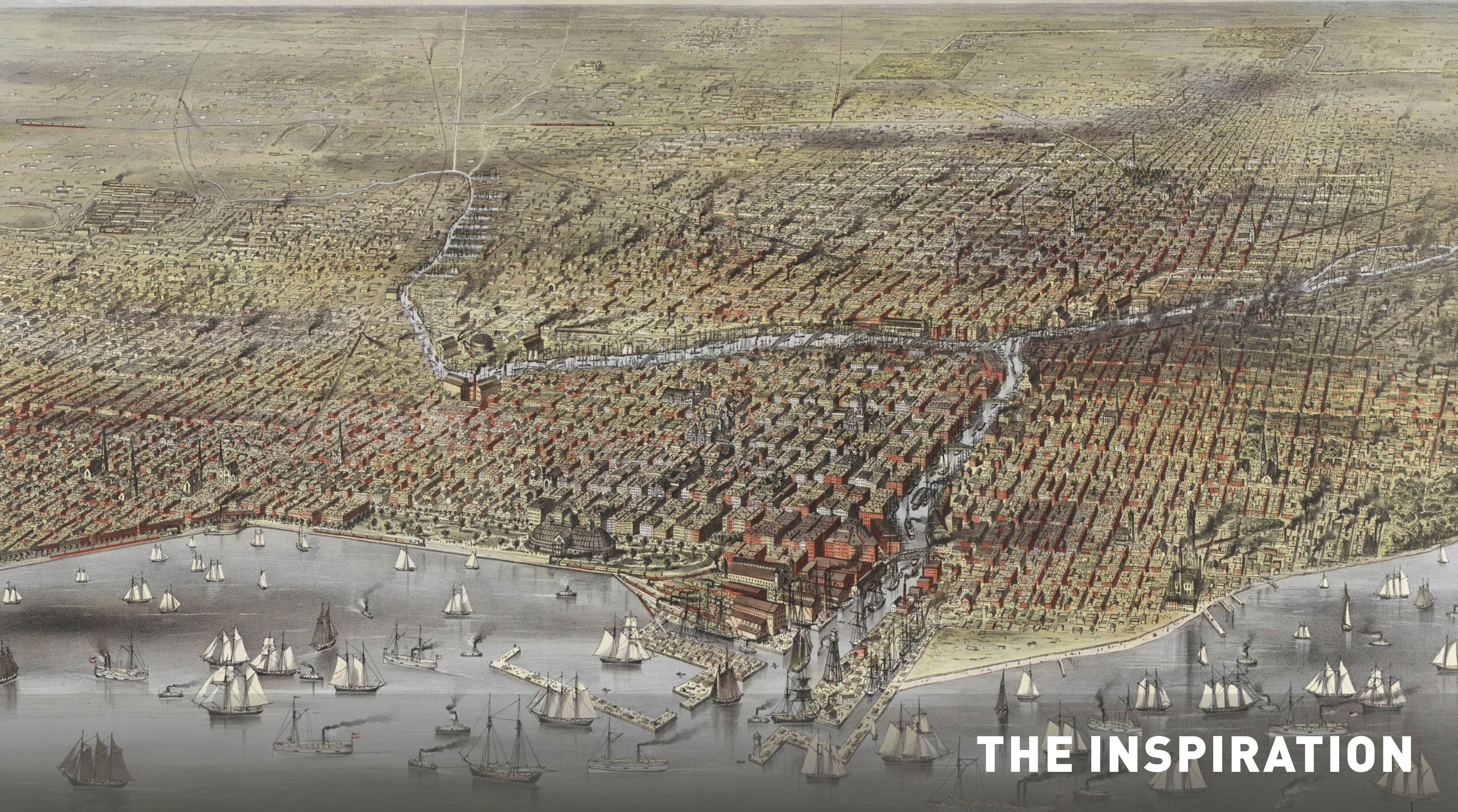


# CHICAGO RIVERWALK CONFLUENCE

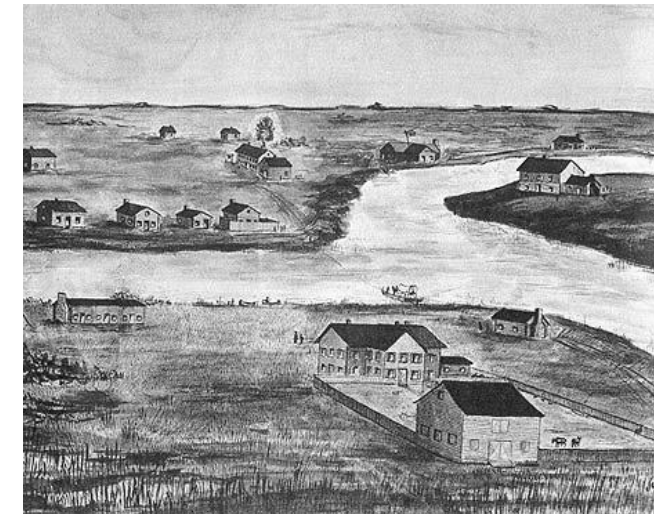
## RIVER ECOLOGY AND GOVERNANCE TASK FORCE

Chicago, Illinois  
November 1, 2022

9276



# THE INSPIRATION



# THE STORY

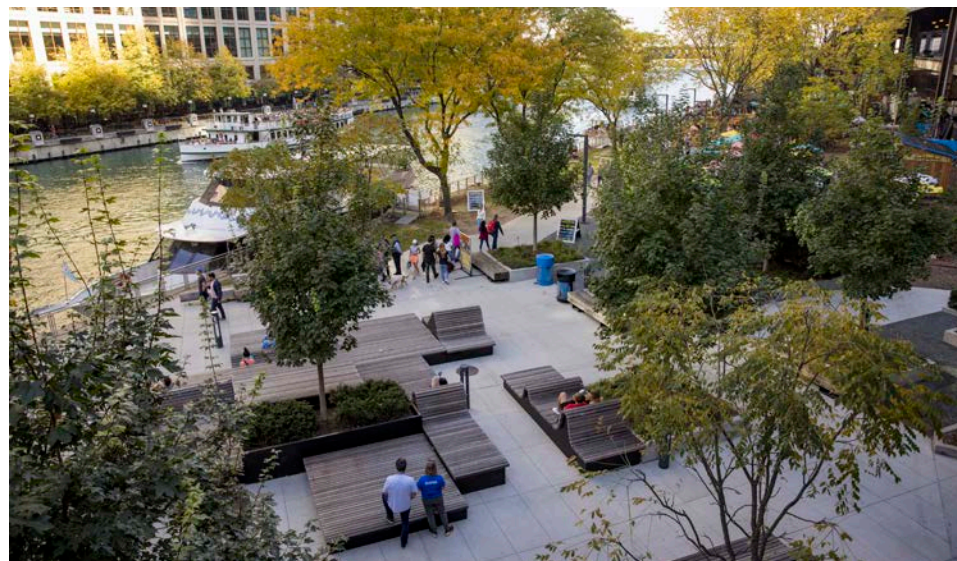
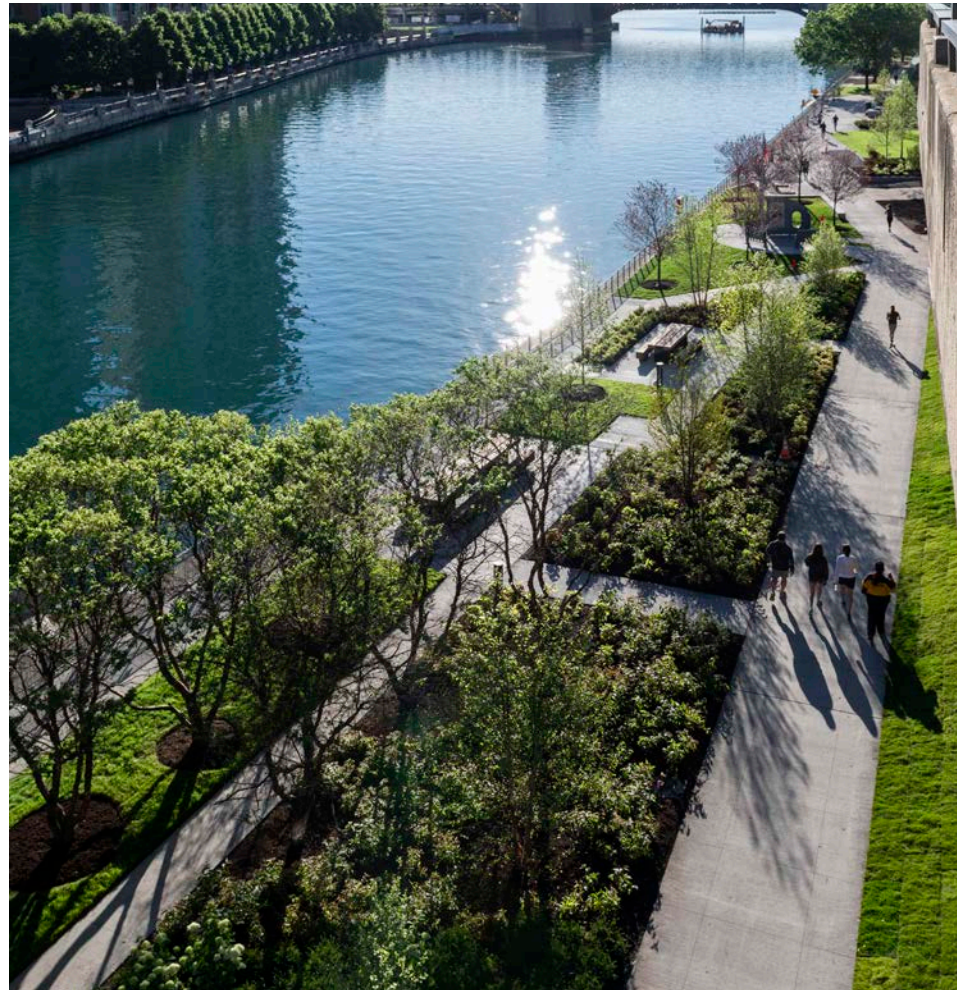
## HISTORY MEETS TODAY



# CHICAGO RIVERWALK



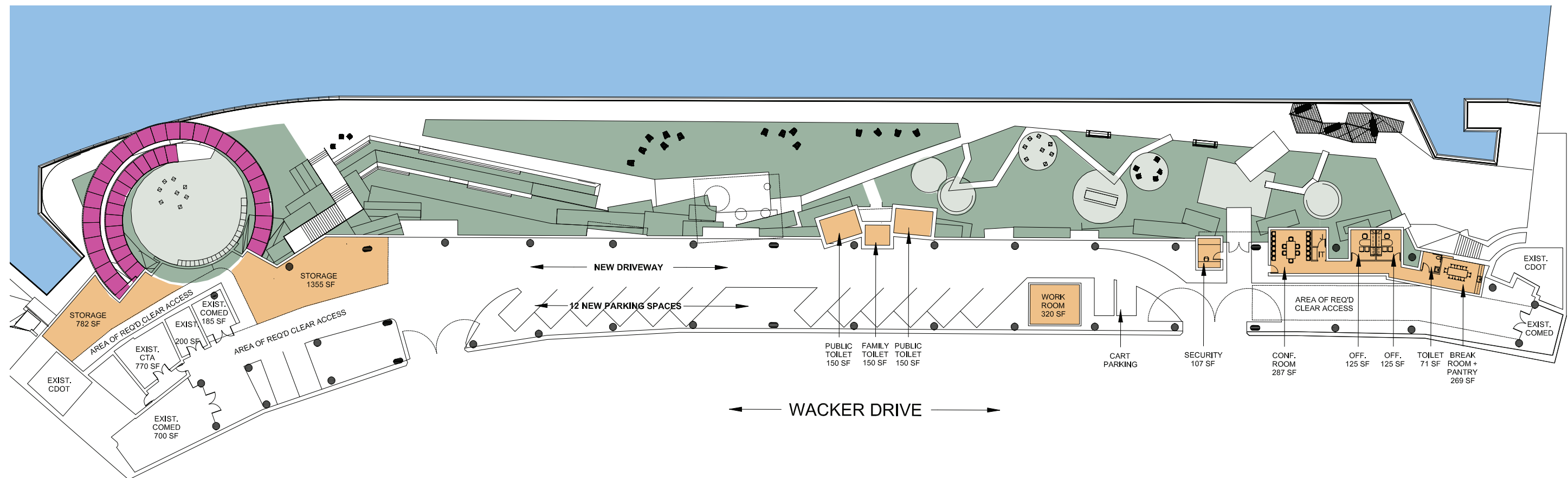
# RIVERWALK EAST



# RIVERWALK CONFLUENCE PROGRAM

## Program Requirements

The area adjacent to the Riverwalk, under both Upper Wacker Drive and the northern sidewalk adjacent to Upper Wacker Drive, currently houses existing facilities for several city and utility agencies that need to remain and will require access in perpetuity. Additionally, the Chicago Department of Assets, Information, & Services requires facilities for their operations on the premises. The following is the current understanding of the requirements for this project on the site.

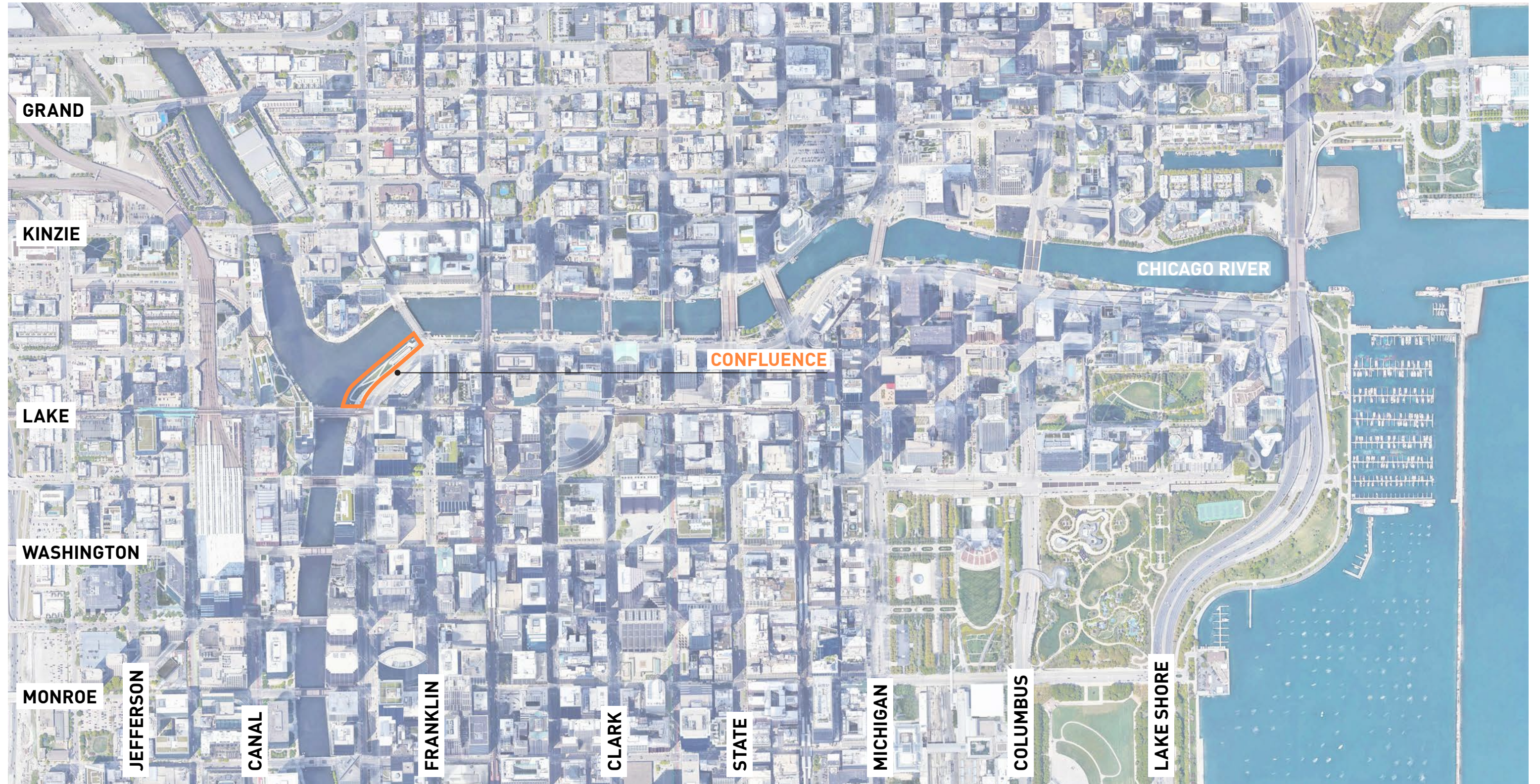


2014 CHICAGO RIVERWALK CONFLUENCE

10/10/2014

# THE CONTEXT

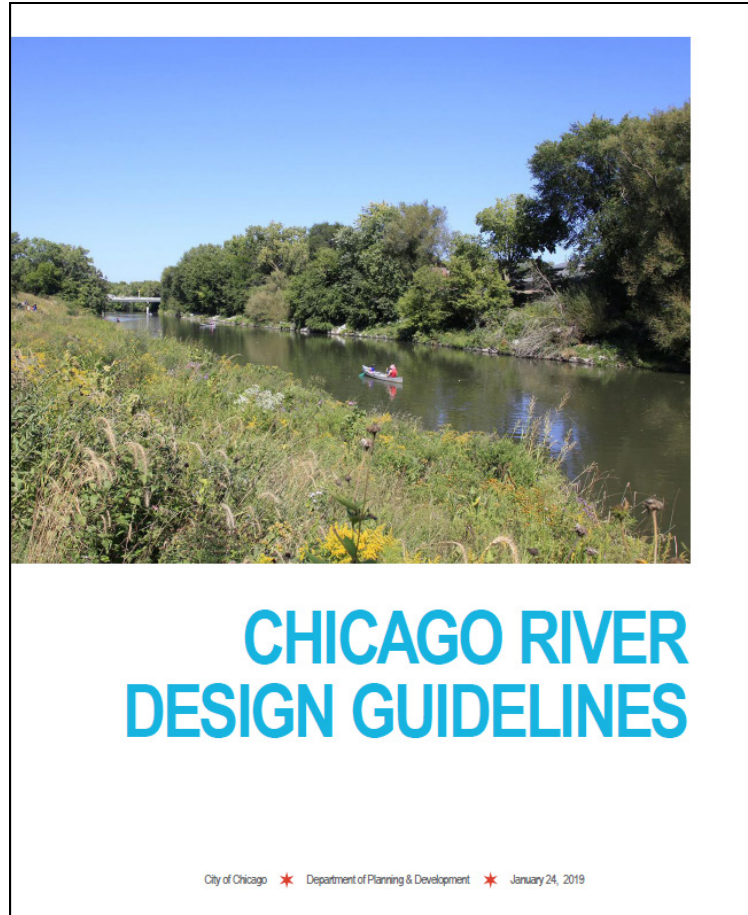
# PROJECT LOCATION





# CHICAGO RIVER DESIGN GUIDELINES

JANUARY, 2019



4.3.2 NEW NATURALIZED SHORELINE (PRIORITY)

4.3.3 STORMWATER MANAGEMENT BEST PRACTICES (PRIORITY)

4.3.4 AQUATIC WILDLIFE HABITATS (PRIORITY)

4.3.5 ROBUST UPLAND HABITATS

4.3.6 INCREASED SETBACK

4.3.7 LARGE RIVERFRONT PARK



4.4.1 RECREATION DESIGN PRINCIPLES

4.4.2 ACCESS TO WATER AND DOCKING FACILITIES

4.4.3 EXPANDED SEATING AREAS

4.4.4 RIVERFRONT OVERLOOKS

4.4.5 RECREATIONAL AREAS

4.4.6 SUPPORT AMENITIES



4.5.1 CONNECTIVITY DESIGN PRINCIPLES

4.5.2 UNDERBRIDGE CONNECTIONS

4.5.3 ENHANCED CONNECTIONS TO STREET AND TRANSPORTATION NETWORK

4.5.4 INCREASED ACCESSIBILITY

4.5.5 CANTILEVERED & FLOATING WALKWAYS

4.5.6 INTERPRETIVE SIGNAGE

4.5.7 PUBLIC ART & SPECIALTY LIGHTING

# CONCEPT PRECEDENTS



# CONCEPT PRECEDENTS





# THE DESIGN

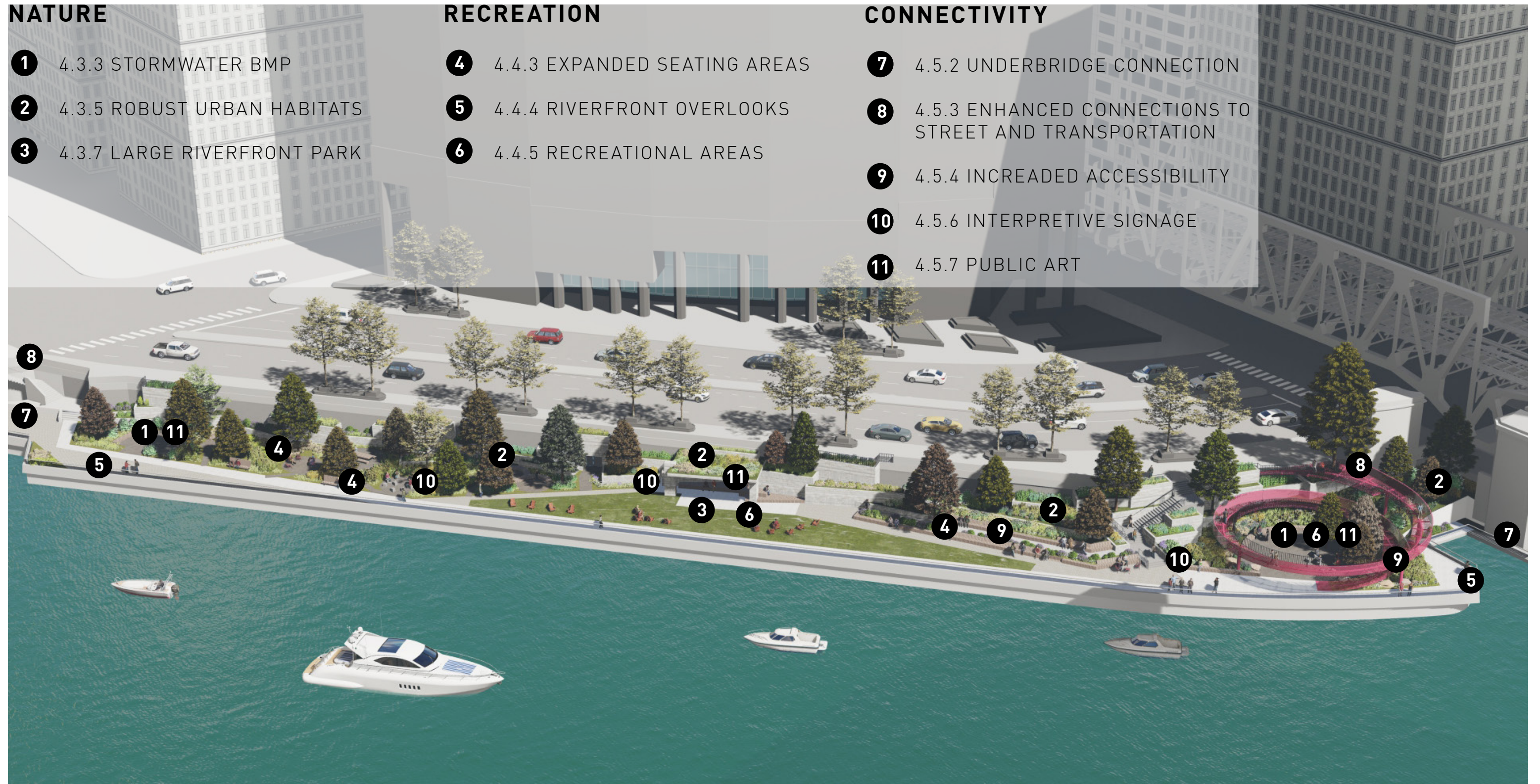
# RIVERWALK DESIGN

## LEGEND:

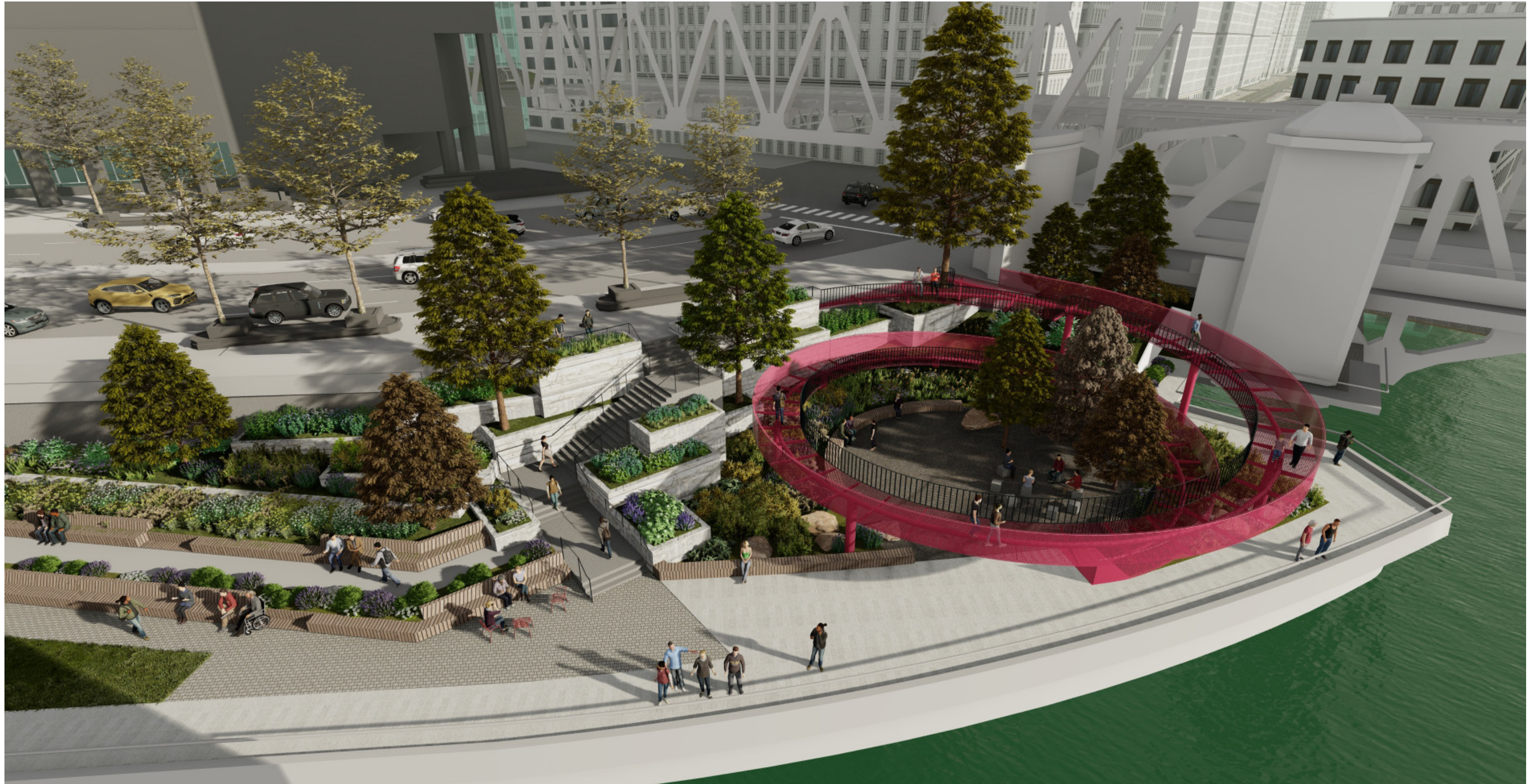
- |                                     |   |
|-------------------------------------|---|
| <b>1</b> CONNECTION TO WACKER DRIVE | <b>8</b> OVERHEAD STRUCTURE                 |
| <b>2</b> TERRACED PLANTING          | <b>9</b> TERRACED SEATING                   |
| <b>3</b> OPEN PLAZA                 | <b>10</b> LINEAR SEATING AT ACCESSIBLE WALK |
| <b>4</b> SEATING NOOK               | <b>11</b> STAIRCASE ACCESS TO WACKER DRIVE  |
| <b>5</b> COMMUNAL SEATING AREA      | <b>12</b> FEATURE PLAZA                     |
| <b>6</b> COUNCIL RING               | <b>13</b> FEATURE WALKWAY                   |
| <b>7</b> OPEN LAWN                  |   |



# RIVERWALK DESIGN GUIDELINE MENU ITEMS



## COLOR- OPTION 1

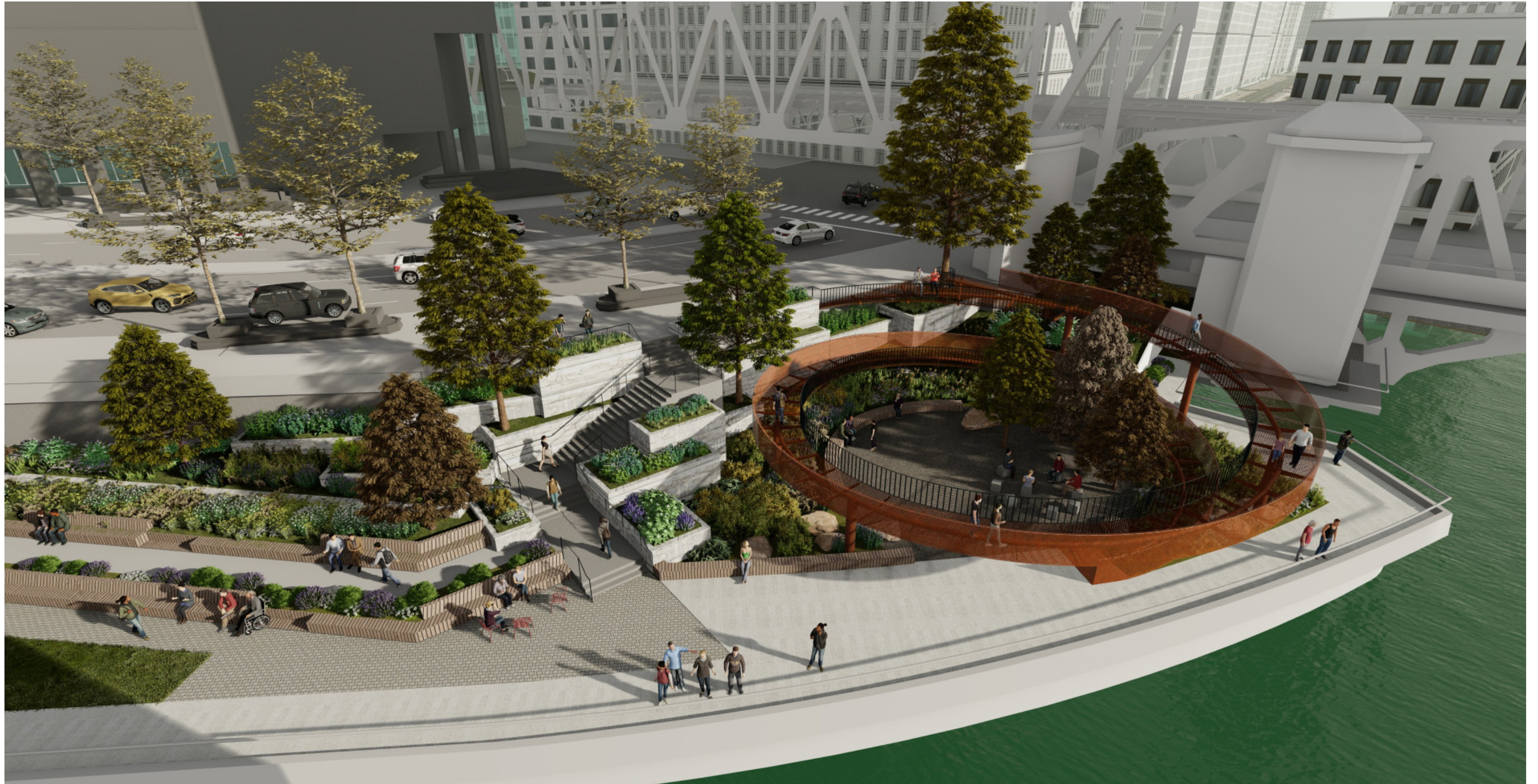


## COLOR- OPTION 2





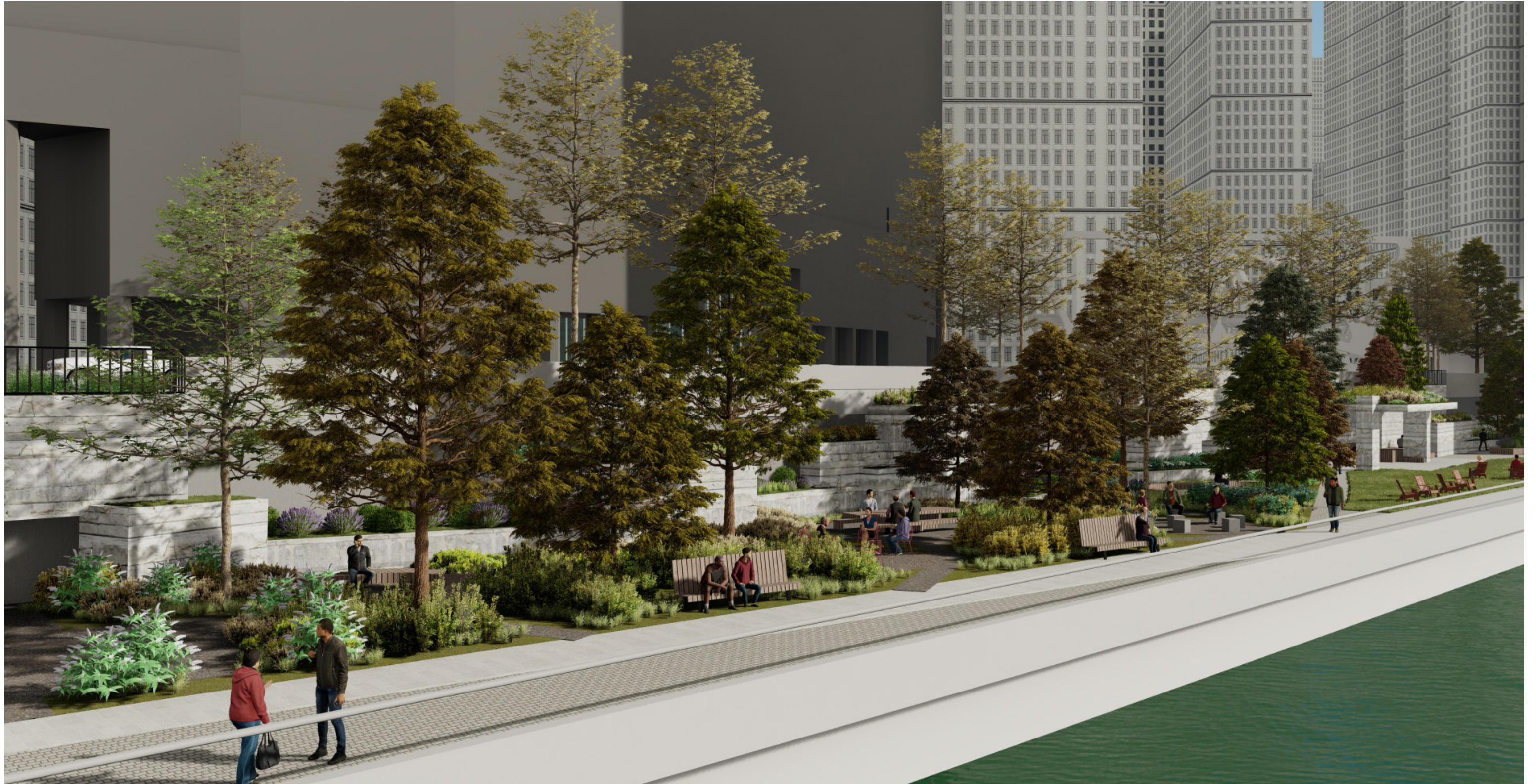
## COLOR- OPTION 3



## DETAILED PERSPECTIVE VIEW



# DETAILED PERSPECTIVE VIEW



## DETAILED PERSPECTIVE VIEW



# PLANT MATERIAL STRATEGY



**UPLAND**  
Grows best in well-drained soils, and many plants in the upland plant community are tolerant of drier conditions.

**RIPARIAN / RIVERBANK**  
Occurs at the interface of the land and water's edge. They may be seasonally or permanently flooded.



**Riparian/Riverbank**

Scientific Name	Common Name	Location		
		LO	UE	RE
<b>Trees</b>				
<i>Alnus glutinosa</i>	European Black Alder	X		
<i>Betula nigra</i>	River Birch		X	
<i>Gymnocladus dioica</i>	Kentucky Coffeetree	X	X	X
<i>Nyssa sylvatica</i>	Blackgum			X
<i>Platanus occidentalis</i>	Sycamore		X	X
<i>Quercus bicolor</i>	Swamp White Oak	X	X	X
<i>Quercus palustris</i>	Pin Oak		X	X
<i>Taxodium distichum</i>	Bald Cypress	X	X	
<b>Ornamental Trees</b>				
<i>Amelanchier laevis</i>	Allegheny serviceberry		X	X
<i>Amelanchier canadensis</i>	Shadblow Serviceberry		X	X
<b>Shrubs</b>				
<i>Amelanchier arborea</i>	Juneberry		X	X
<i>Amorpha fruticosa</i>	False Indigo		X	X
<i>Aronia arbutifolia</i>	Red Chokeberry	X	X	X
<i>Aronia melanocarpa</i>	Black Chokeberry	X	X	X
<i>Ceanothus americanus</i>	New Jersey Tea		X	X
<i>Cephalanthus occidentalis</i>	Common Buttonbush			X
<i>Chaenomeles japonica</i>	Japanese Flowering Quince		X	
<i>Cornus racemosa</i>	Gray Dogwood	X	X	X
<i>Cornus sericea</i>	Redtwig Dogwood	X	X	X
<i>Fortnergia gardenii</i>	Drawf Bottlebrush, Drawf Fothergilla		X	
<i>Hypericum kalmianum</i>	St. John's wort	X	X	X
<i>Ilex glabra</i>	Inkberry	X	X	X
<i>Ilex verticillata</i>	Common Winterberry	X	X	
<i>Ilex x meserveae</i>	Meserve Holly	X	X	
<i>Kerria japonica</i>	Japanese Kerria		X	
<i>Potentilla fruticosa</i>	Potentilla	X	X	X
<i>Rhododendron hybrids</i>	P.J.M. hybrid Rhododendrons		X	
<i>Rhus glabra</i>	Smooth Sumac	X	X	X
<i>Rhus typhina</i>	Staghorn Sumac	X	X	X
<i>Ribes alpinum</i>	Alpine Currant	X	X	
<i>Rosa rugosa</i>	Rugosa Rose, Beach Plum	X	X	
<i>Sambucus canadensis</i>	Elderberry		X	X
<i>Spiraea japonica</i>	Little Princess Japanese Spirea	X	X	
<i>Spiraea x bumalda</i>	Bumald Spiraea	X	X	
<i>Stephanandra incisa</i>	Cutleaf Stephanandra	X	X	
<i>Symphoricarpos x chenaultii</i>	Chenault Coralberry		X	
<i>Syringa</i> spp.	Chinese Lilac, Meyer's Dwarf Lilac, Miss Kim Dwarf Lilac, and Purple Lilacs	X	X	
<i>Taxus cuspidata</i> varieties	Japanese Yew varieties		X	
<i>Taxus x media</i> varieties	Yew varieties		X	
<i>Viburnum x burkwoodii</i>	Burkwood Viburnum	X	X	
<i>Viburnum x carcephalum</i>	Carcephalum Viburnum	X	X	
<i>Viburnum carlesii</i>	Koreanspice Viburnum	X	X	
<i>Viburnum dentatum</i>	Arrow-Wood Viburnum	X	X	X
<i>Viburnum lentago</i>	Nannyberry	X	X	X
<i>Viburnum plicatum tomentosum</i>	Doublefire Viburnum	X	X	
<i>Viburnum prunifolium</i>	Blackhaw Viburnum	X	X	
<i>Viburnum sieboldii</i>	Siebold Viburnum	X	X	
<i>Viburnum trilobum</i>	American Cranberrybush	X	X	
<i>Viburnum x juddii</i>	Judd Viburnum	X	X	
<i>Weigela florida</i>	Weigela	X	X	
<i>Elymus canadensis</i>	Canada Wild Rye		X	X
<i>Panicum virgatum</i>	Switchgrass	X	X	X
<i>Spartina pectinata</i>	Prairie Cord Grass			X

**Grasses, Sedges, and Rushes**

Scientific Name	Common Name	Location						
LO			UE			RE		
<i>Carex muskingumensis</i>	Palm Sedge		X					
<i>Carex stipita</i>	Fox Sedge		X					
<i>Elymus canadensis</i>	Nodding Wild Rye			X	X			
<i>Elymus virginicus</i>	Virginia Wild Rye			X	X			
<i>Panicum virgatum</i>	Switch Grass		X	X	X			
<b>Forbs and Others</b>								
<i>Allium cernuum</i>	Nodding Wild Onion		X	X				
<i>Aquilegia canadensis</i>	American Columbine		X	X				
<i>Arunus dioicus</i>	Goat's Beard		X	X				
<i>Alnus rugosa</i>	Speckled Alder				X			
<i>Betula nigra</i>	River Birch			X				
<i>Celtis occidentalis</i>	Hackberry		X	X	X			
<i>Gleditsia triacanthos inermis</i>	Thornless Honeylocust		X	X				
<i>Gymnocladus dioica</i>	Kentucky Coffeetree		X	X	X			
<i>Linodendron tulipifera</i>	Tulip Tree			X				
<i>Pinus strobus</i>	White Pine		X	X				
<i>Pinus flexilis</i>	Limber Pine			X				
<i>Pinus mugo</i>	Mugo Pine			X				
<i>Quercus bicolor</i>	Swamp White Oak		X	X	X			
<i>Quercus macrocarpa</i>	Bur Oak		X	X				
<i>Taxodium distichum</i>	Bald Cypress		X	X				
<i>Tilia americana</i>	American Linden		X	X				
<i>Tilia tomentosa 'Sterling Silver'</i>	Sterling Silver Linden		X					
<i>Tilia x euchlora</i>	Crimean Linden		X	X				
<i>Tsuga canadensis</i>	Canadian Hemlock			X				
<b>Ornamental Trees</b>								
<i>Amelanchier laevis</i>	Allegheny serviceberry		X	X				
<i>Amelanchier canadensis</i>	Shadblow Serviceberry		X	X				
<i>Amelanchier x grandiflora</i>	Apple Serviceberry		X					
<i>Carpinus betulus</i>	European Hornbeam		X					
<i>Carpinus caroliniana</i>	Blue Beech, Musclemwood, American Hornbeam		X	X				
<i>Cercis canadensis</i>	Redbud		X	X				
<i>Cornus alternifolia</i>	Pagoda Dogwood		X	X				
<i>Cornus mas</i>	Cornelian Cherry Dogwood		X					
<i>Crataegus punctata</i>	Dotted Hawthorn		X					
<i>Crataegus crusgalli inermis</i>	Thornless Cockspur Hawthorn		X	X				
<i>Crataegus mollis</i>	Downy Hawthorn		X	X				
<i>Crataegus phaeopyrum</i>	Washington Hawthorn		X					
<i>Crataegus viridis</i>	Winter King Hawthorn		X	X				
<i>Hamamelis virginiana</i>	American Witchhazel		X	X				
<i>Malus cultivars</i>	Disease resistant cultivars such as Adams, Siberian, Jackie Siberian, Bob White, Beverly, Donald Wyman, Prairiefire, Profusion, Red Jewel, Sargent, Snowdrift, Red Zumi, and Yellow Zumi Crabapple		X	X				
<b>Vines</b>								
<i>Celastrus scandens</i>	Bittersweet		X					
<i>Parthenocissus quinquefolia</i>	Virginia Creeper		X	X	X			
<b>Groundcover</b>								
<i>Asarum canadensis</i>	Wild Ginger			X	X			

**Riparian/Riverbank, continued**

Scientific Name	Common Name	Location		
		LO	UE	RE
<i>Pennisetum alopecuroides</i>	Hamel and Common Fountain Grass	X	X	
<i>Perovskia atriplicifolia</i>	Russian Sage	X	X	
<i>Phlox paniculata cultivars</i>	Phlox varieties		X	
<i>Pycnanthemum virginianum</i>	Common Mountain Mint		X	X
<i>Sporobolus heterolepis</i>	Prairie Dropseed	X	X	X
<i>Verbena hastata</i>	Blue Vervain		X	X
<i>Veronica fasciculata</i>	Common Ironweed		X	
<i>Veronicastrum virginicum</i>	Culver's Root		X	X
<b>Upland</b>				

**Upland**

Scientific Name	Common Name	Location		
		LO	UE	RE
<b>Trees</b>				
<i>Acer rubrum cultivars</i>	October Glory and Red Sunset Maples	X	X	
<i>Acer saccharum</i>	Sugar Maple		X	X
<i>Acer x freemanii 'Autumn Blaze'</i>	Autumn Blaze Maple	X	X	
<i>Alnus glutinosa</i>	European Black Alder	X		
<i>Alnus rugosa</i>	Speckled Alder			X
<i>Betula nigra</i>	River Birch		X	
<i>Celtis occidentalis</i>	Hackberry	X	X	X
<i>Gleditsia triacanthos inermis</i>	Thornless Honeylocust	X	X	
<i>Gymnocladus dioica</i>	Kentucky Coffeetree	X	X	X
<i>Linodendron tulipifera</i>	Tulip Tree		X	
<i>Pinus strobus</i>	White Pine	X	X	
<i>Pinus flexilis</i>	Limber Pine		X	
<i>Pinus mugo</i>	Mugo Pine		X	
<i>Quercus bicolor</i>	Swamp White Oak	X	X	X
<i>Quercus macrocarpa</i>	Bur Oak		X	X
<i>Taxodium distichum</i>	Bald Cypress	X	X	
<i>Tilia americana</i>	American Linden	X	X	
<i>Tilia tomentosa 'Sterling Silver'</i>	Sterling Silver Linden		X	
<i>Tilia x euchlora</i>	Crimean Linden	X	X	
<i>Tsuga canadensis</i>	Canadian Hemlock		X	
<b>Ornamental Trees</b>				
<i>Amelanchier laevis</i>	Allegheny serviceberry		X	X
<i>Amelanchier canadensis</i>	Shadblow Serviceberry		X	X
<i>Amelanchier x grandiflora</i>	Apple Serviceberry		X	
<i>Carpinus betulus</i>	European Hornbeam		X	
<i>Carpinus caroliniana</i>	Blue Beech, Musclemwood, American Hornbeam		X	X
<i>Cercis canadensis</i>	Redbud		X	X
<i>Cornus alternifolia</i>	Pagoda Dogwood		X	X
<i>Cornus mas</i>	Cornelian Cherry Dogwood		X	
<i>Crataegus punctata</i>	Dotted Hawthorn		X	
<i>Crataegus crusgalli inermis</i>	Thornless Cockspur Hawthorn	X	X	
<i>Crataegus mollis</i>	Downy Hawthorn		X	X
<i>Crataegus phaeopyrum</i>	Washington Hawthorn		X	
<i>Crataegus viridis</i>	Winter King Hawthorn	X	X	
<i>Hamamelis virginiana</i>	American Witchhazel		X	X
<i>Malus cultivars</i>	Disease resistant cultivars such as Adams, Siberian, Jackie Siberian, Bob White, Beverly, Donald Wyman, Prairiefire, Profusion, Red Jewel, Sargent, Snowdrift, Red Zumi, and Yellow Zumi Crabapple		X	X
<i>Ostrya virginiana</i>	Ironwood, Eastern Hophornbeam		X	X
<b>Shrubs</b>				
<i>Aronia melanocarpa</i>	Black Chokeberry	X	X	X
<i>Buddleia davidii</i>	Butterfly Bush		X	
<i>Buxus micophylla</i> varieties	Dwarf Korean Boxwood	X	X	
<i>Ceanothus americanus</i>	New Jersey Tea		X	X
<i>Chaenomeles japonica</i>	Japanese Flowering Quince		X	
<i>Cornus racemosa</i>	Gray Dogwood		X	X
<i>Cornus sericea</i> cultivars	Redtwig Dogwood	X	X	X
<i>Corylus americana</i>	American Hazelnut, Filbert		X	X
<i>Cotoneaster horizontalis</i>	Rock Spray Cotoneaster	X	X	
<i>Forsythia viridissima</i>	Bronx Forsythia	X	X	
<i>Fortnergia gardenii</i>	Drawf Bottlebrush, Drawf Fothergilla		X	
<i>Hydrangea arborescens</i>	Smooth Hydrangea		X	
<i>Hydrangea paniculata</i> varieties	Peegee Improved and Tardiva Late, Panicle Hydrangea		X	
<i>Hydrangea quercifolia</i>	Oakleaf Hydrangea		X	X
<i>Hypericum kalmianum</i>	St. John's wort	X	X	X
<i>Ilex glabra</i>	Inkberry	X	X	X
<i>Ilex verticillata</i> varieties	Common Winterberry	X	X	
<i>Ilex x meserveae</i>	Meserve Holly	X	X	

**Upland, continued**

Scientific Name	Common Name	Location		
		LO	UE	RE
<i>Juniperus chinensis pfitzeriana</i>	Pfitzer Juniper	X	X	
<i>Juniperus horizontalis</i> var.	Spreading Juniper varieties	X	X	
<i>Juniperus procumbens</i>	Japanese Garden Juniper	X	X	
<i>Juniperus sargentii</i>	Sargent Juniper	X	X	
<i>Juniperus virginiana</i> var.	Eastern Red Cedar varieties	X	X	X
<i>Juniperus chinensis 'Sea Green'</i>	Sea Green Juniper	X	X	X
<i>Kerria japonica</i>	Japanese Kerria		X	
<i>Myrica pennsylvanica</i>	Northern Bayberry		X	X
<i>Physocarpus opulifolius</i>	Common Ninebark	X	X	X
<i>Potentilla fruticosa</i>	Potentilla	X	X	X
<i>Rhododendron hybrids</i>	P.J.M. hybrid Rhododendrons		X	
<i>Rhus aromatica 'Gro-Low'</i>	Gro-Low Sumac	X	X	X
<i>Rhus glabra</i>	Smooth Sumac	X	X	X
<i>Rhus typhina</i>	Staghorn Sumac	X	X	X
<i>Ribes alpinum</i>	Alpine Currant	X	X	
<i>Rosa rugosa</i>	Rugosa Rose, Beach Plum	X	X	
<i>Rosa hybrids</i>	Midland Roses	X	X	
<i>Sambucus canadensis</i>	Elderberry		X	X
<i>Spiraea japonica</i>	Little Princess Japanese Spirea	X	X	
<i>Spiraea x bumalda</i>	Bumald Spiraea	X	X	
<i>Stephanandra incisa</i>	Cutleaf Stephanandra	X	X	
<i>Symphoricarpos albus</i>	Common Snowberry		X	
<i>Symphoricarpos x chenaultii</i>	Chenault Coralberry		X	
<i>Syringa</i> spp.	Chinese Lilac, Meyer's Dwarf Lilac, Miss Kim Dwarf Lilac, and Purple Lilacs	X	X	
<i>Taxus cuspidata</i> varieties	Japanese Yew varieties		X	
<i>Taxus x media</i> varieties	Yew varieties		X	
<i>Thuja occidentalis</i> varieties	Arborvitae varieties		X	X
<i>Viburnum x burkwoodii</i>	Burkwood Viburnum	X	X	
<i>Viburnum x carcephalum</i>	Carcephalum Viburnum	X	X	
<i>Viburnum carlesii</i>	Koreanspice Viburnum	X	X	
<i>Viburnum dentatum</i>	Arrow-Wood Viburnum	X	X	X
<i>Viburnum lentago</i>	Nannyberry	X	X	X
<i>Viburnum plicatum tomentosum</i>	Doublefire Viburnum	X	X	
<i>Viburnum prunifolium</i>	Blackhaw Viburnum	X	X	
<i>Viburnum sieboldii</i>	Siebold Viburnum	X	X	
<				

