

# #12 Milwaukee Avenue

Milwaukee Avenue forms the commercial spine of this submarket, running in a northwesterly direction through the neighborhoods of Wicker Park, Bucktown, and Logan Square. Several shopping centers are located near the intersection of Pulaski and Belmont in the northwest corner of this submarket.

## Demographics

	2000	2010	2012*
Population	225,787	202,784	208,148
Households	80,922	83,071	84,827
Median HH Income*			\$38,319

Median Age	31.2
1 Person Households	26,810 32.3%
All Households with Children	21,828 26.3%
All Households 65+	8,536 10.3%

Square Miles	9.4
Population Density per Square Mile	22,143
SF of Land in Parcels Zoned B, C, D & BPD	29.7M
SF of Ground Floor Area Zoned B, C, D & BPD	15.5M
Total Employment	52,819

Source: US Census Bureau, Esri, Dun & Bradstreet \*2012 Estimate

## Submarket Inventory

### Shopping Centers

1 community centers with more than 125,000 SF:  
Wicker Park Commons

6 neighborhood centers with 30,000 to 125,000 SF:  
Belmont Real Fashion Outlet, Kennedy Plaza,  
Belmont & Pulaski, Logan Square Retail, Barry Plaza,  
1519-1529 North Milwaukee Avenue

### Big Box Retailers

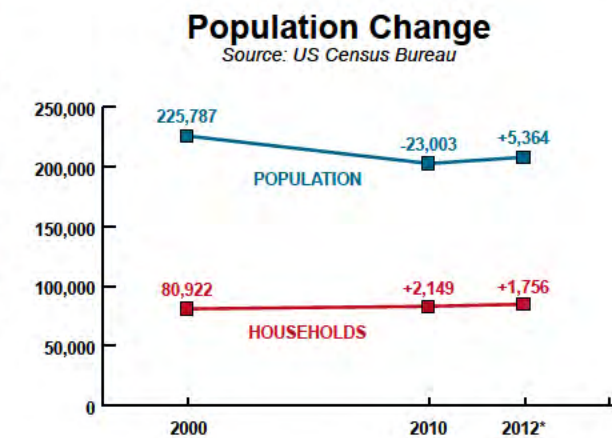
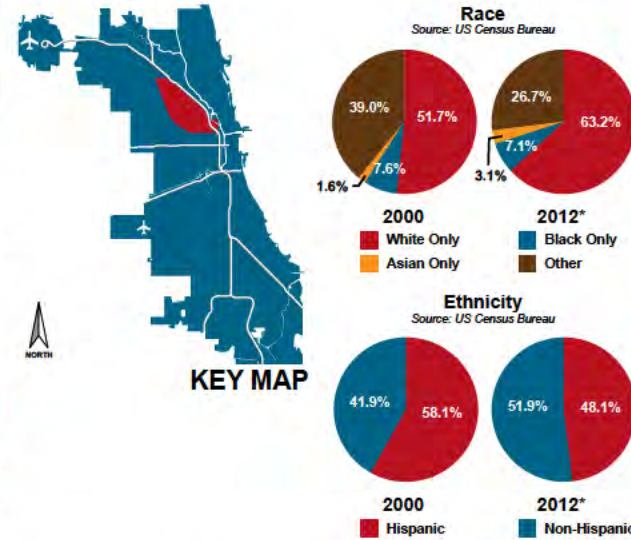
1 Costco  
1 Kmart

### Grocery Stores

3 ALDI  
1 Cermak Fresh Market  
1 Dominick's  
1 Jewel-Osco  
1 Tony's Finer Foods

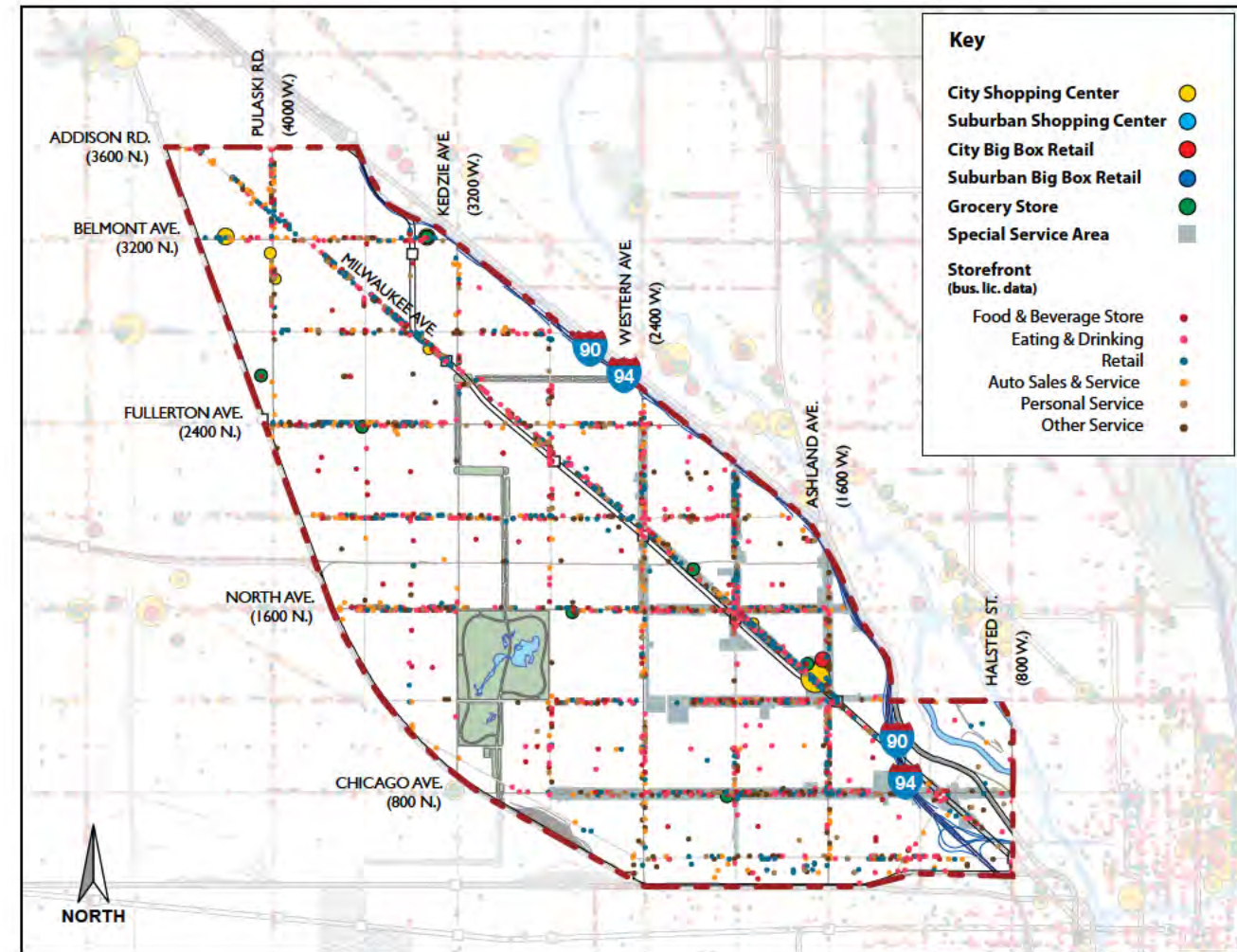
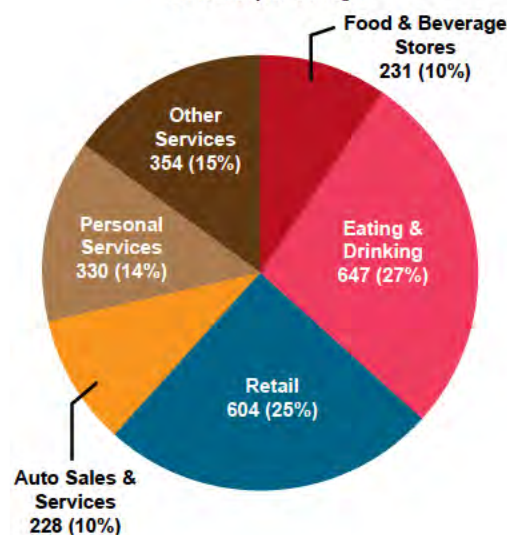
### Special Service Areas

West Town #29  
Wicker Park/Bucktown #33



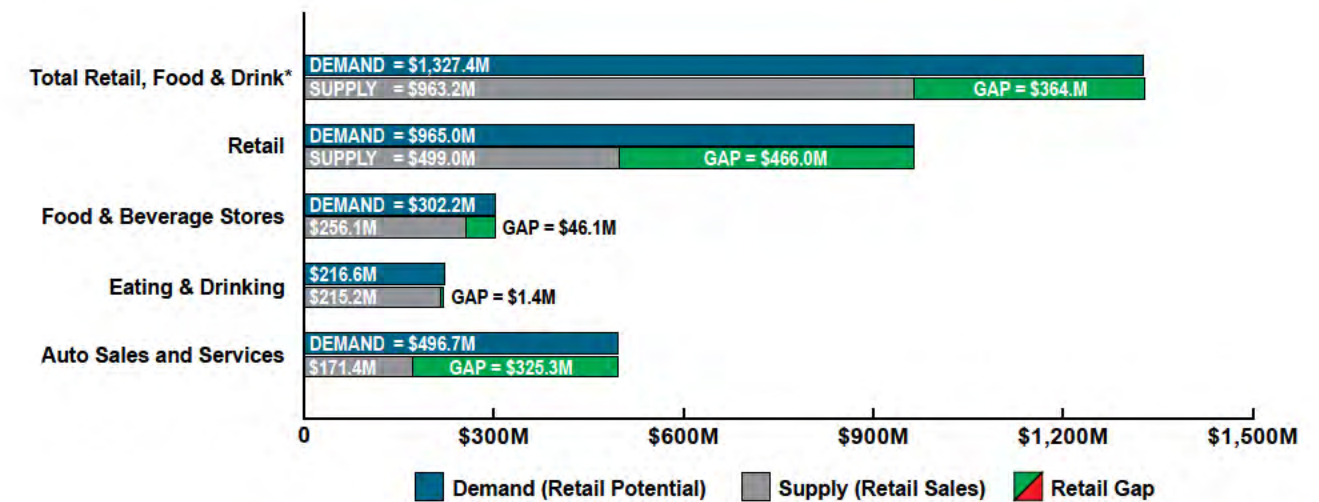
## Submarket Business Licenses

Source: City of Chicago



Submarket Inventory Map

## Submarket Gap Analysis



\*Excludes Non-store Retailers and Auto Sales and Services

Source: Esri Business Analyst