

Butler V. Adams
Chicago Plan Commission
May 20, 2021

640 West Washington Boulevard

Dear Chicago Plan Commission,

I write this letter in support of the 640 West Washington project by Crescent Heights.

It's always a great day when an ugly surface parking lot bites the dust.

The canonization of the Kennedy Expy. continues.

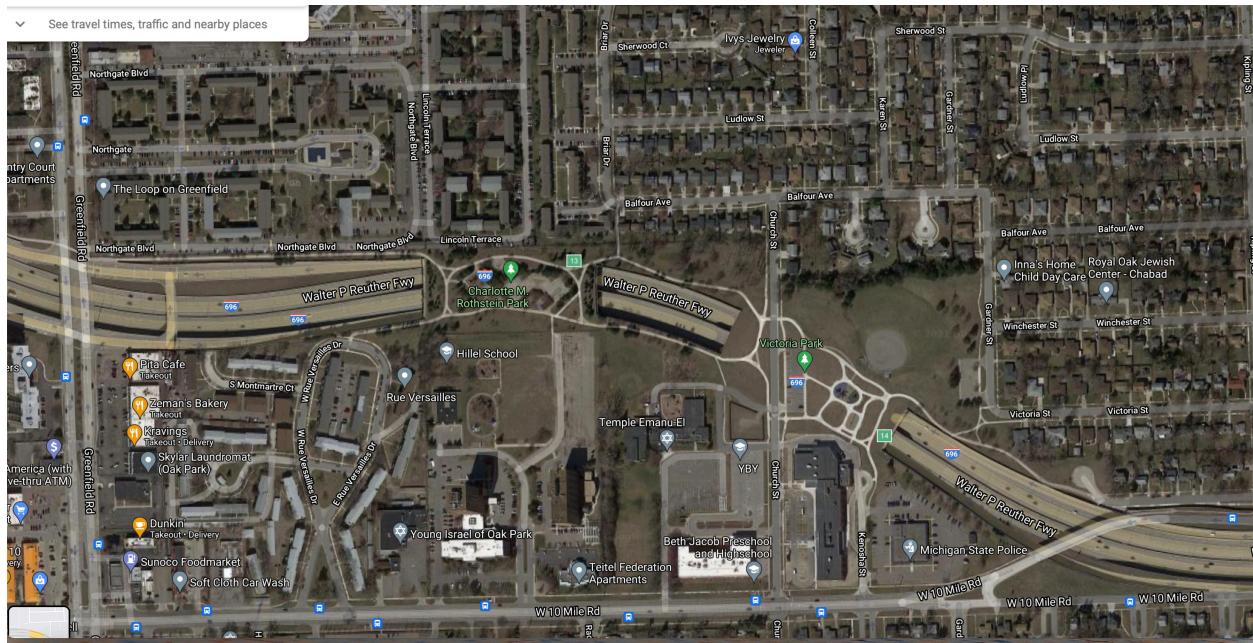
I've followed this developers Chicago projects over the past few years and the addition of NEMA to the Chicago skyline has been transformative.



CH's 1045 South Olive Street project in Los Angeles.

One thing I wish would get more attention is “Capping the Kennedy”. This seems like a prime opportunity for the city to be talking to developers and buildings along the Kennedy about a special tax assessment to help fund the project. The entire E-way doesn't need capping, but perhaps every other block.

Below is a screenshot of I-696 just north of Detroit and you can clearly see how several blocks of the highway have been decked over for parkland. Why can't Chicago have/do something similar? I hope the city become more ambitious on this prospect.



With that, I support this item and look forward to its construction.

Thank you,

Butler V. Adams
Chicago Native
Civic Boaster

