

Bird's Eye View of Existing



Project Area Photos



Facing north on Damen -
looking at Vienna Beef
(2501 N Damen Ave)



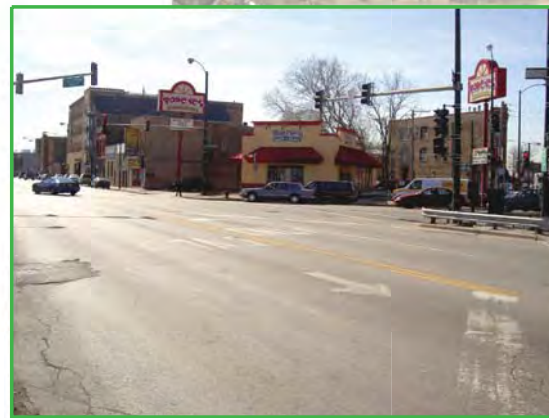
Looking east at WhirlyBall
(1880 W Fullerton Ave)



Midtown Tennis Club on northeast
corner of Damen/Elston
(2455 N Elston Ave)



Looking northeast across
the southeast leg of Elston
at the Dunkin' Donuts
(1927 W Fullerton Ave)



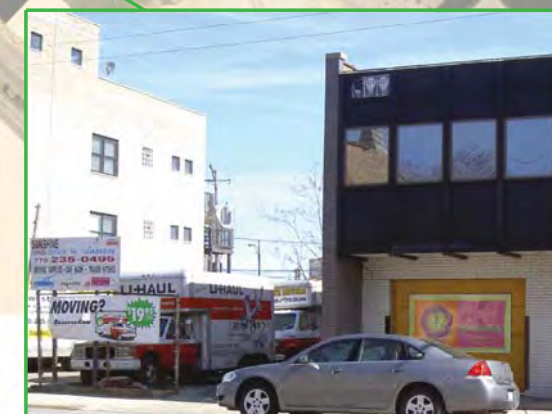
Facing south on Elston - looking at Fullerton
signals and Popeyes Chicken
(1949 W Fullerton Ave)



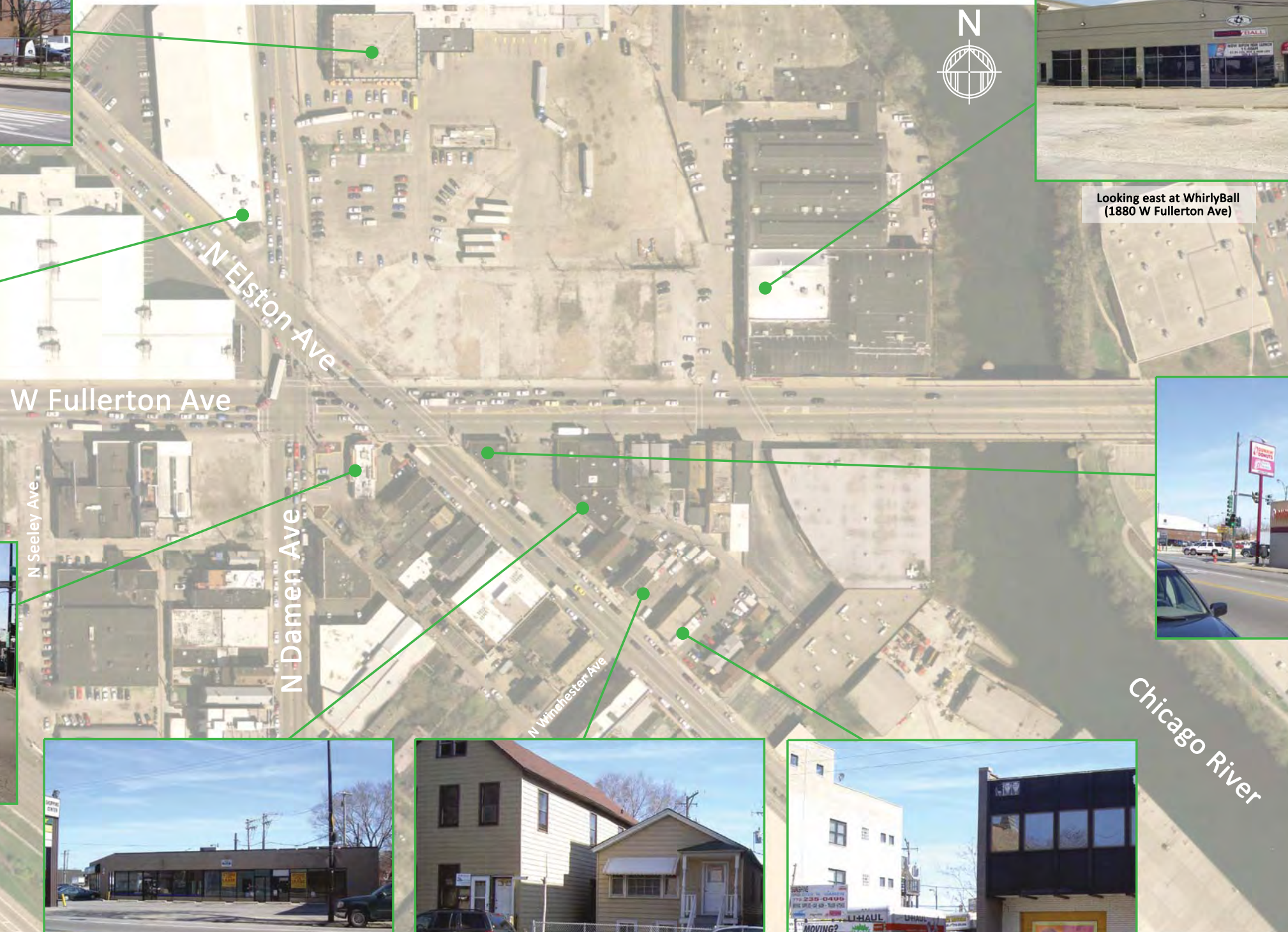
1917 N Elston Ave - Midtown Shopping Center



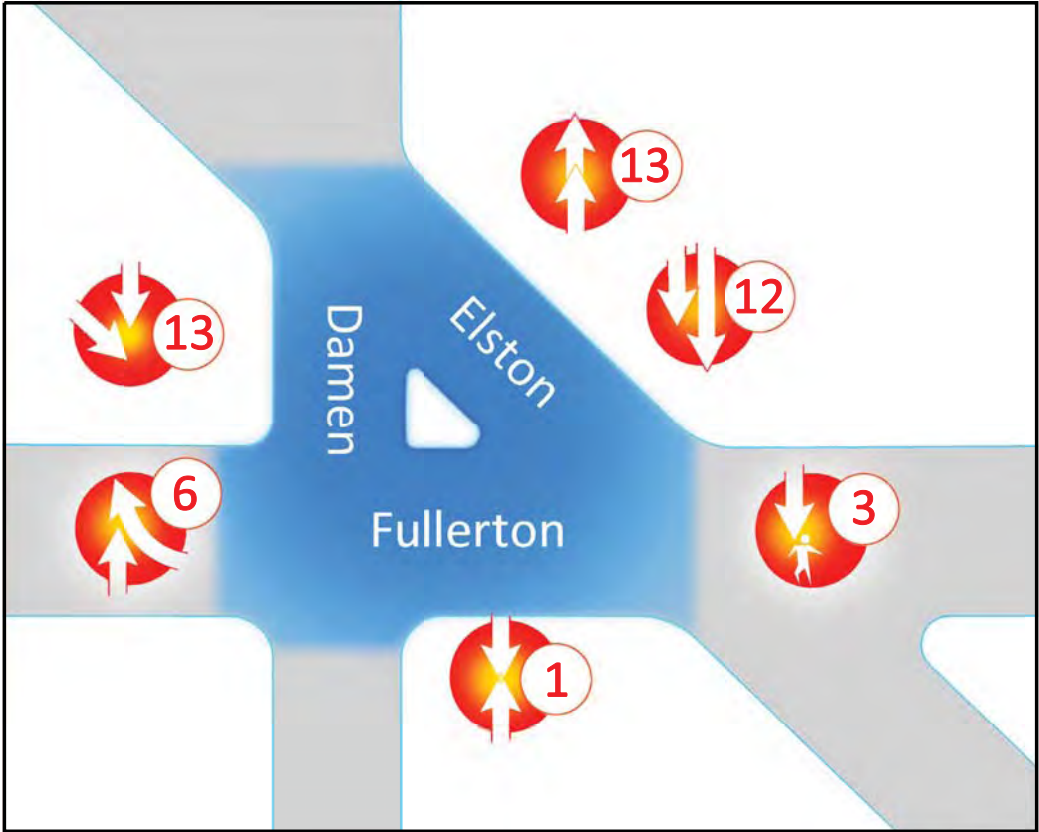
2355 & 2351 N Elston Ave - residential
2349 N Elston Ave - New Castle Home Loans



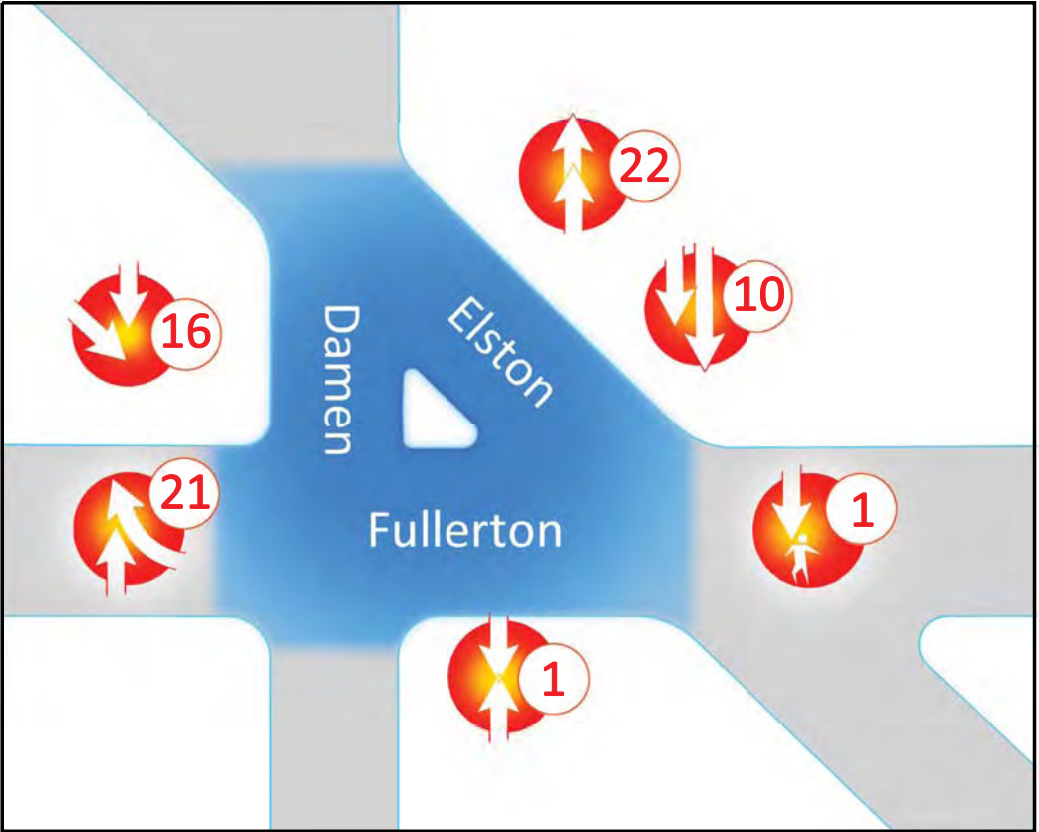
Dynamic Dogs Training & Behavior, Inc.
(2343 N Elston Ave)



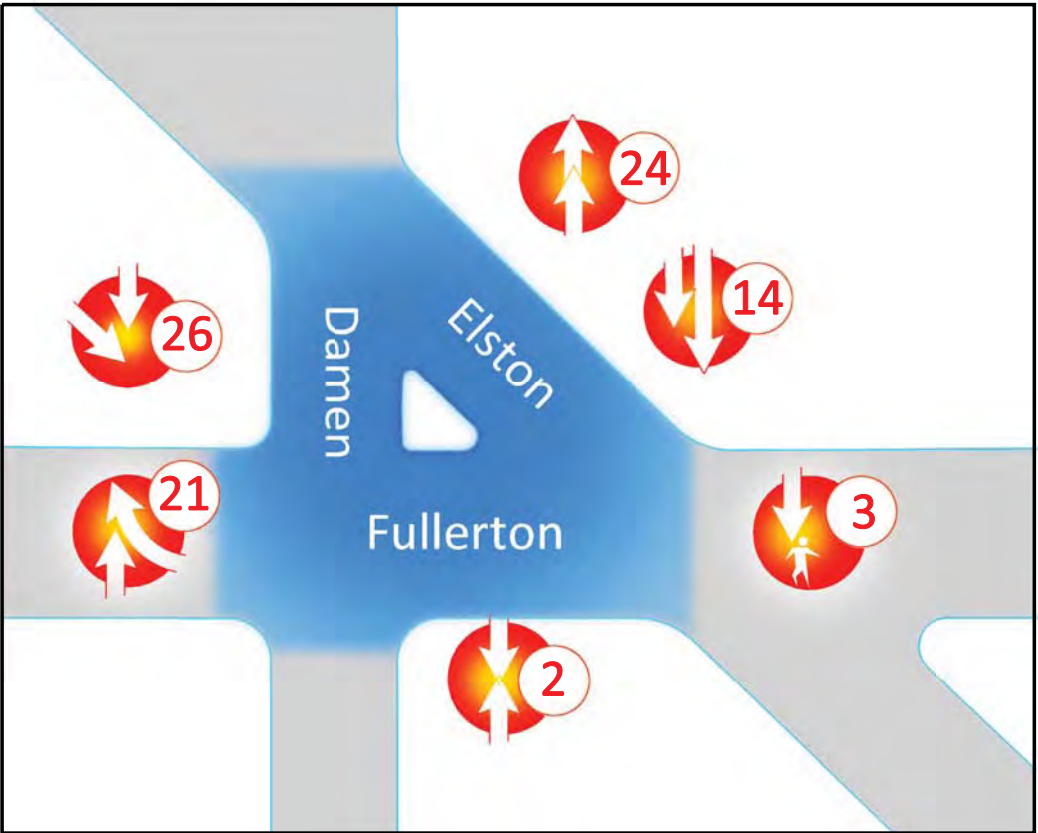
Damen-Elston-Fullerton is a Top Ten Crash Location in Chicago



2008 Intersection Crash History



2009 Intersection Crash History



2010 Intersection Crash History

Total Intersection Crashes by Year

2004	96
2005	101
2006	62
2007	59
2008	50
2009	77
2010	90

Legend

- Rear End
- Sideswipe
- Head On
- Turning
- Angle
- Pedestrian

Considered Alternatives

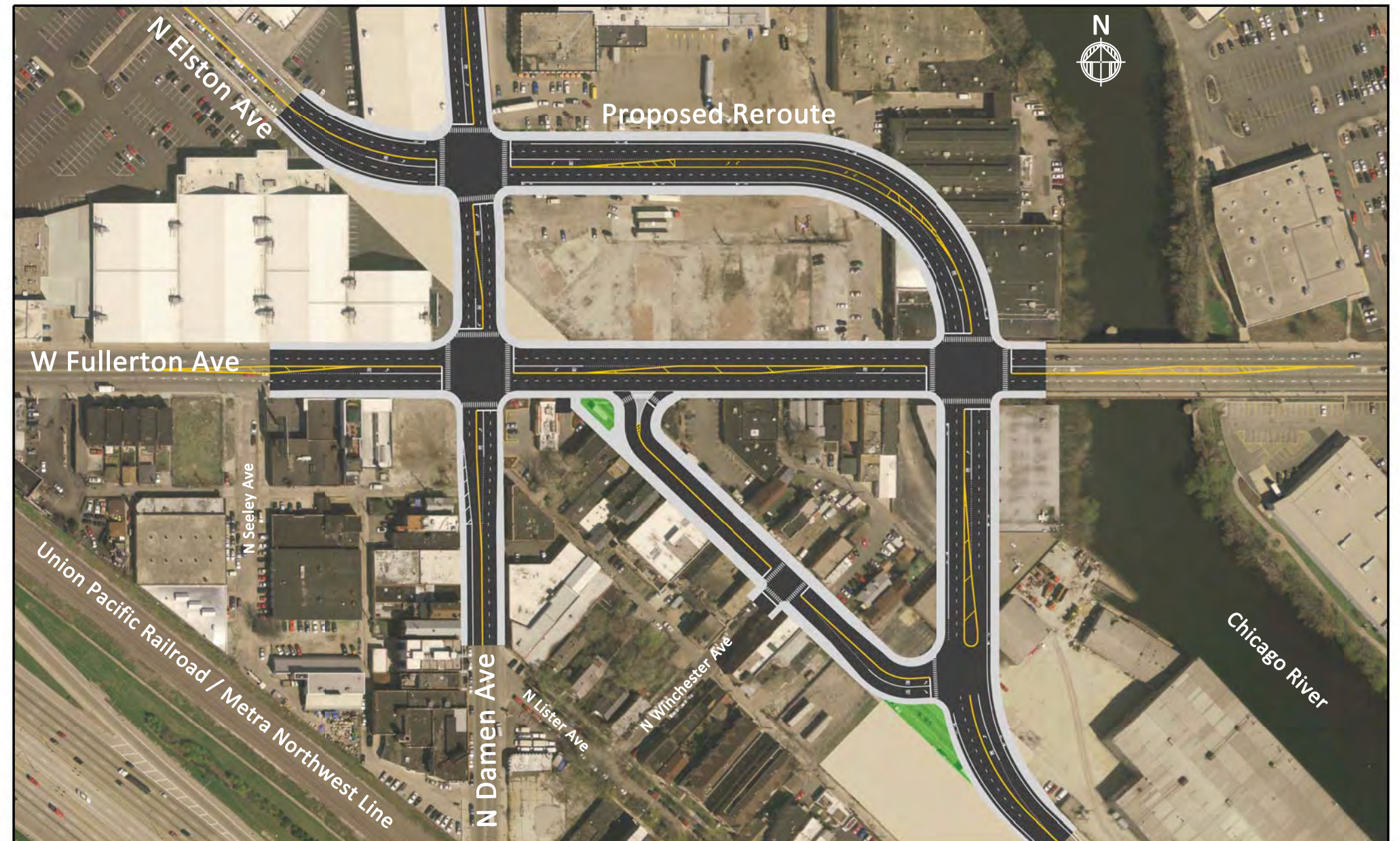
Tunnel Alternative



Overpass Alternative

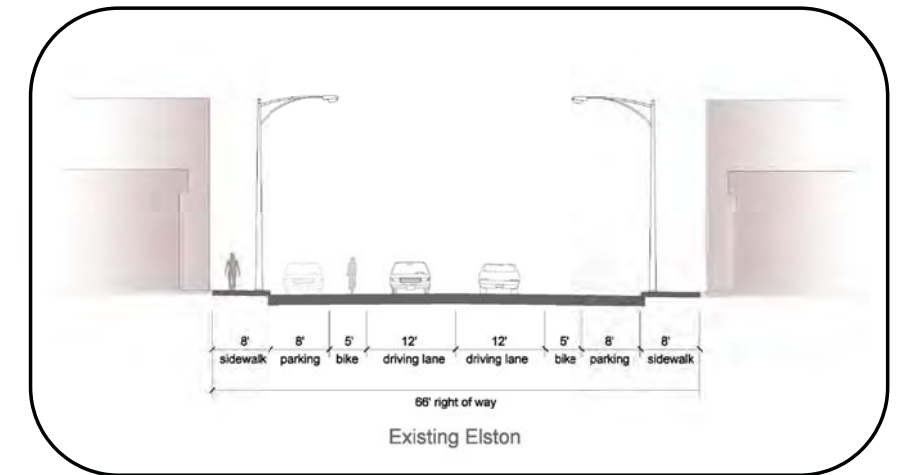


Preferred Alternative: Reroute Elston



Visioning Session - Elston Avenue

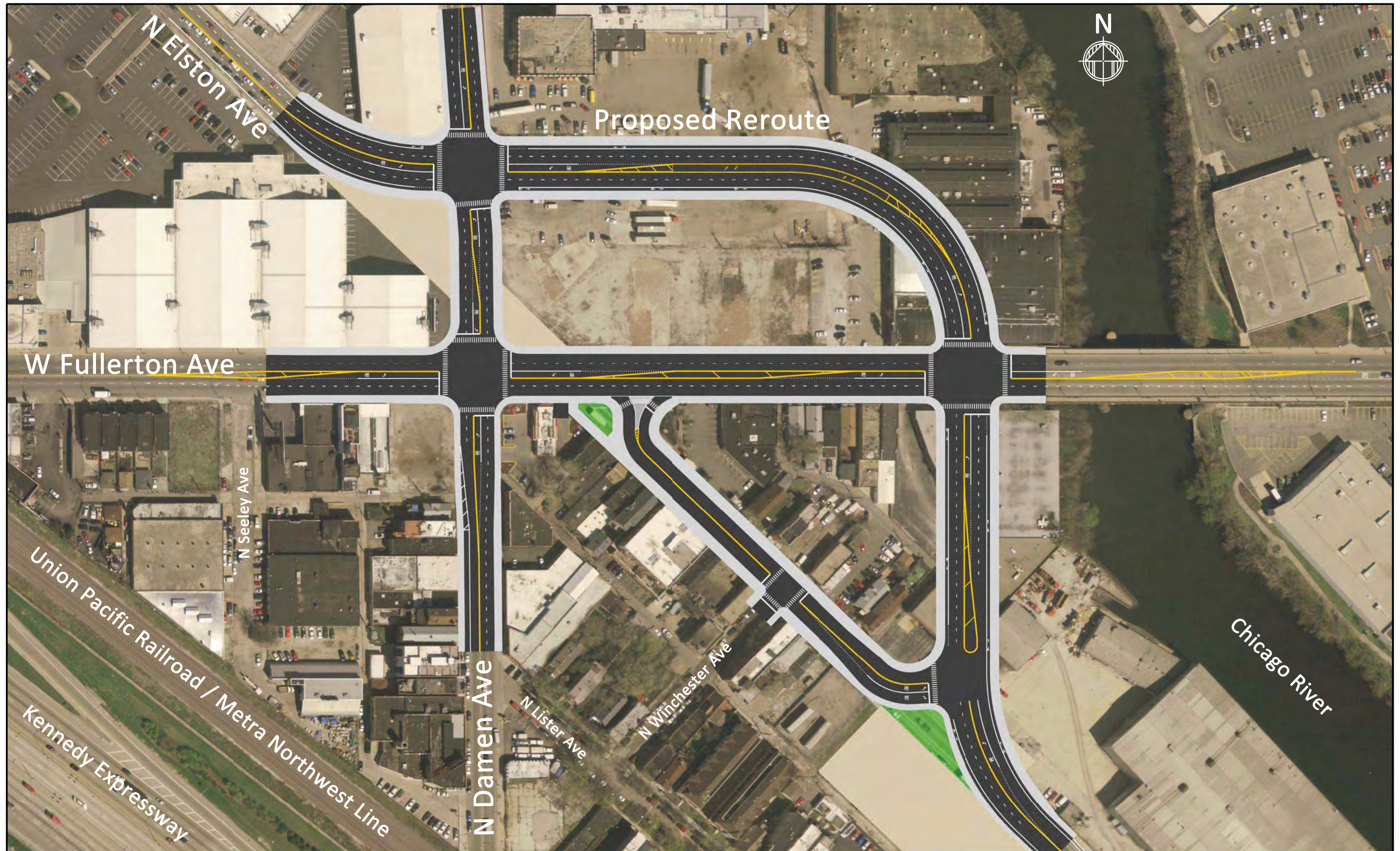
The project team and the local community met at the Elston Avenue Visioning Session to discuss the design of Elston Avenue between Fullerton and rerouted Elston.



The group worked together to develop a roadway section that meets the needs of drivers and pedestrians while promoting the aesthetic development of the corridor.



Preferred Alternative



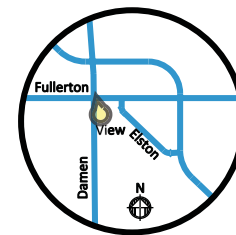
Bird's Eye View of Preferred Alternative



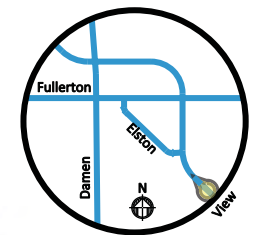
Right-of-Way Detail



Visualizations



Looking North on Damen



Looking Northwest on Elston



Typical Roadway Sections

