

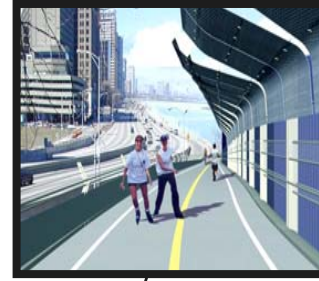


# *Navy Pier Flyover - Lakefront Trail Improvements*

*From Jane Addams Park to the Chicago River*

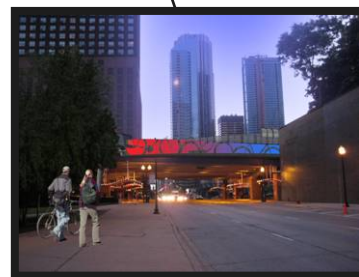
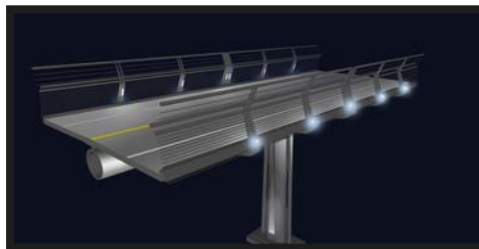
**RICHARD M DALEY, MAYOR**

THE CITY OF CHICAGO • DEPARTMENT OF TRANSPORTATION • DIVISION OF PROJECT DEVELOPMENT



Detail of column and deck lighting

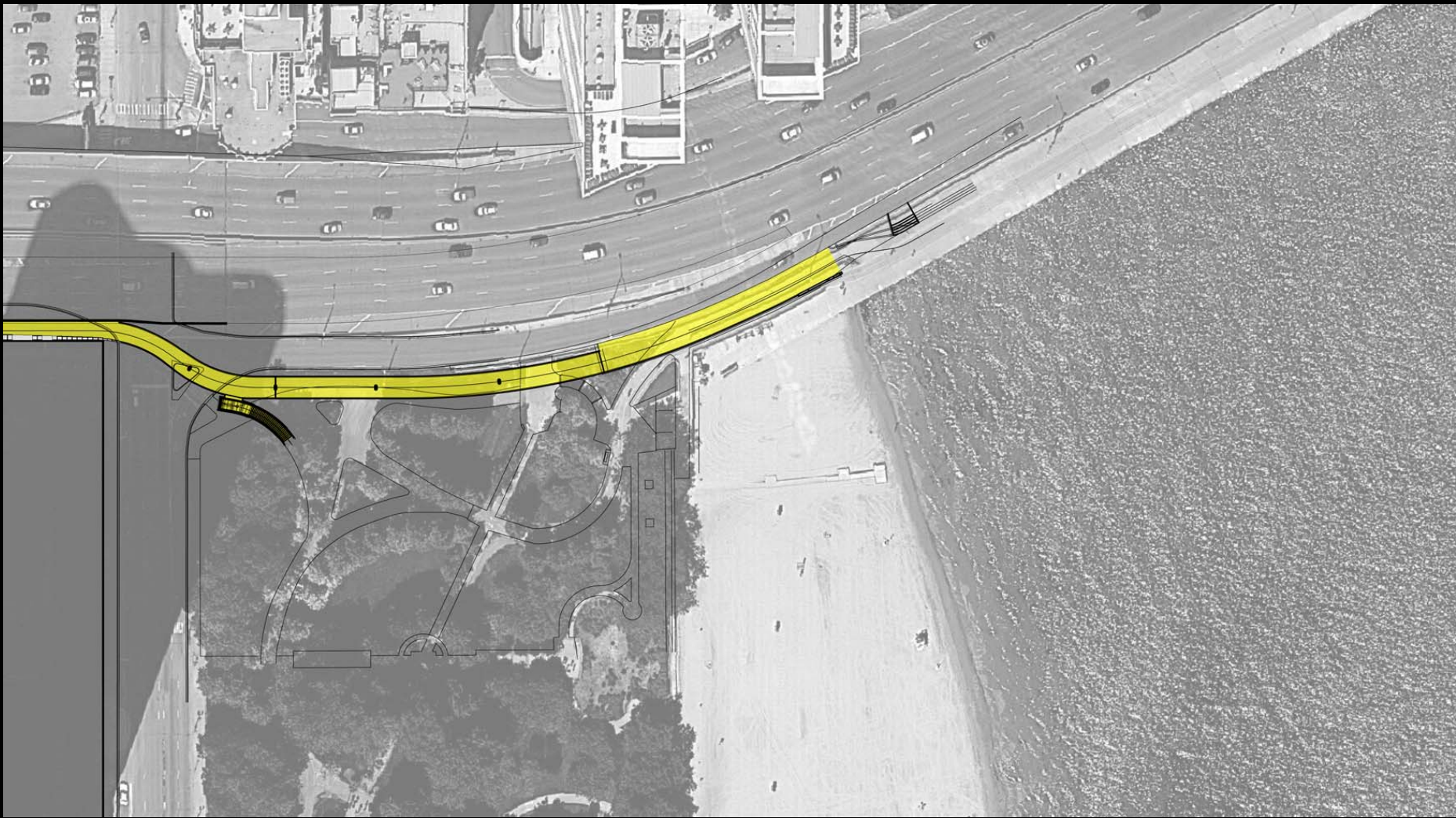
## NAVY PIER FLYOVER - LAKEFRONT TRAIL IMPROVEMENT



# Segment 3

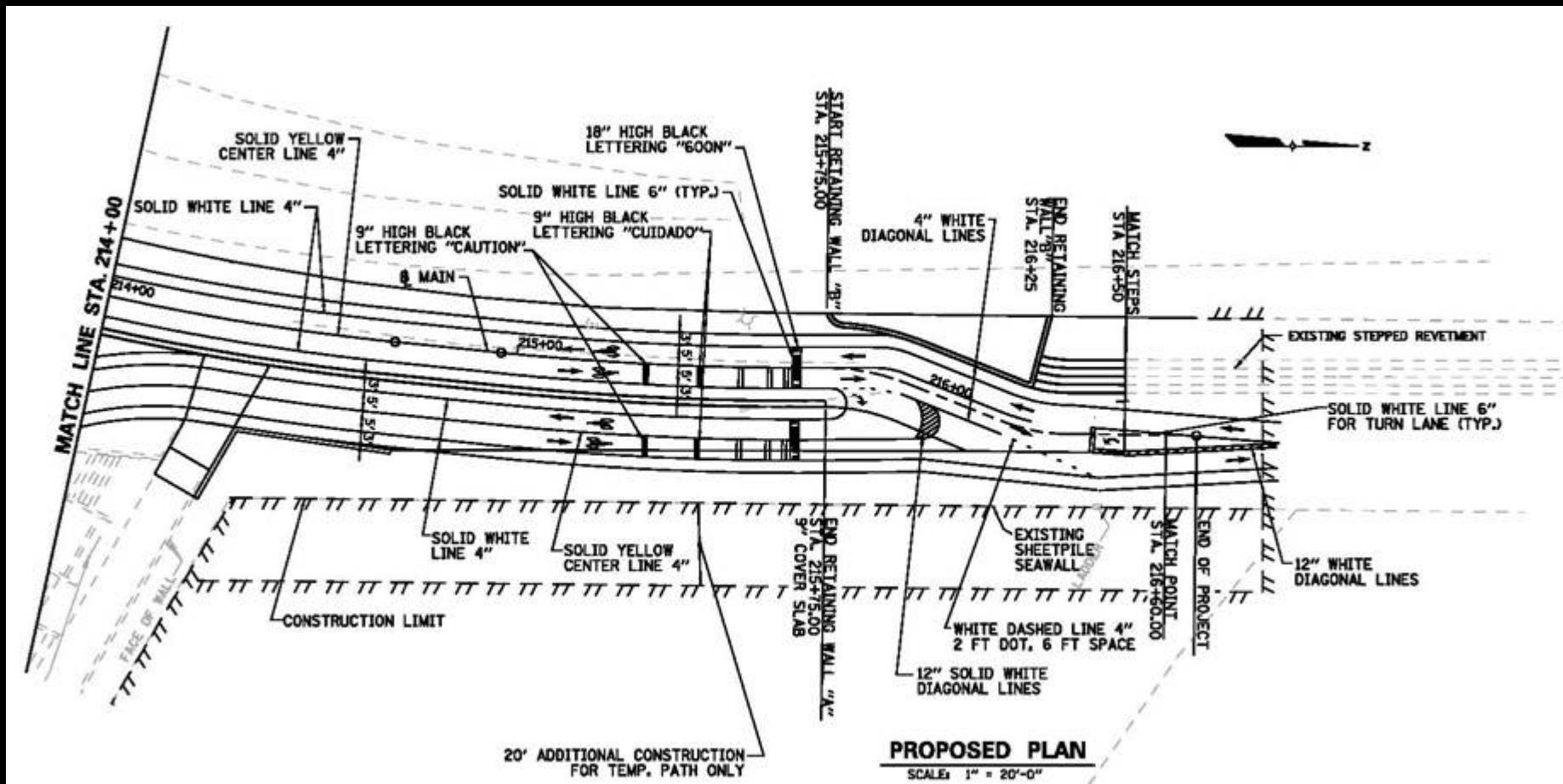
Lakefront Trail from  
Ogden Slip to  
Jane Addams Park





**NORTH** 





**RICHARD M DALEY, MAYOR**

THE CITY OF CHICAGO • DEPARTMENT OF TRANSPORTATION • DIVISION OF PROJECT DEVELOPMENT

Pavement Marking Plan:  
Northern Touch-down  
Lakefront Trail Improvement



**RICHARD M DALEY, MAYOR**

THE CITY OF CHICAGO • DEPARTMENT OF TRANSPORTATION • DIVISION OF PROJECT DEVELOPMENT

View in Jane Addams Park  
Under Bridge  
**Lakefront Trail Improvement**



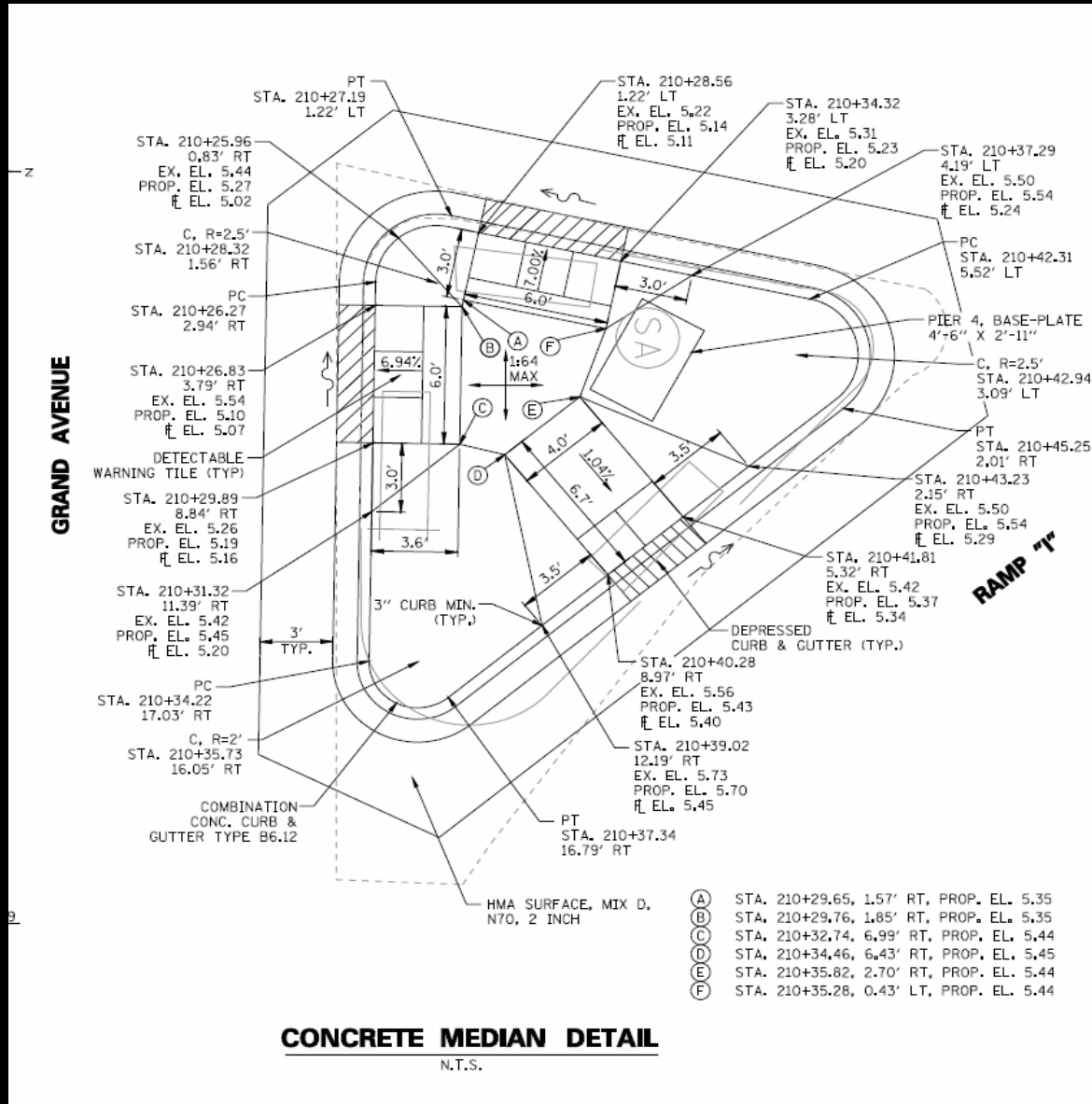


**RICHARD M DALEY, MAYOR**

THE CITY OF CHICAGO • DEPARTMENT OF TRANSPORTATION • DIVISION OF PROJECT DEVELOPMENT

Lakefront Trail Flyover  
At Grand Ave.

**Lakefront Trail Improvement**



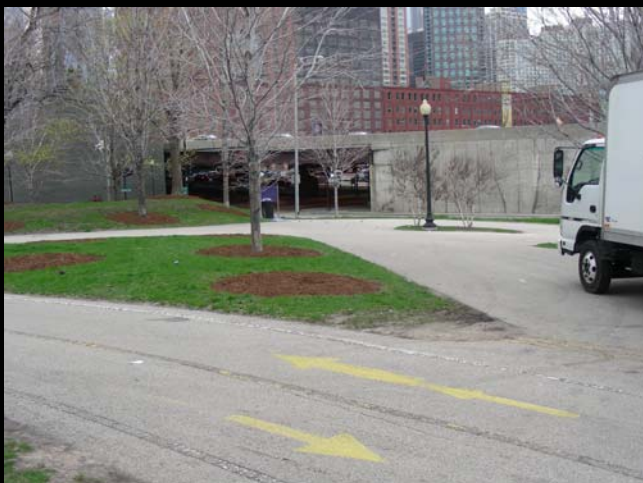
ADA Detail At Grand Ave.

Lakefront Trail Improvement

**RICHARD M DALEY, MAYOR**

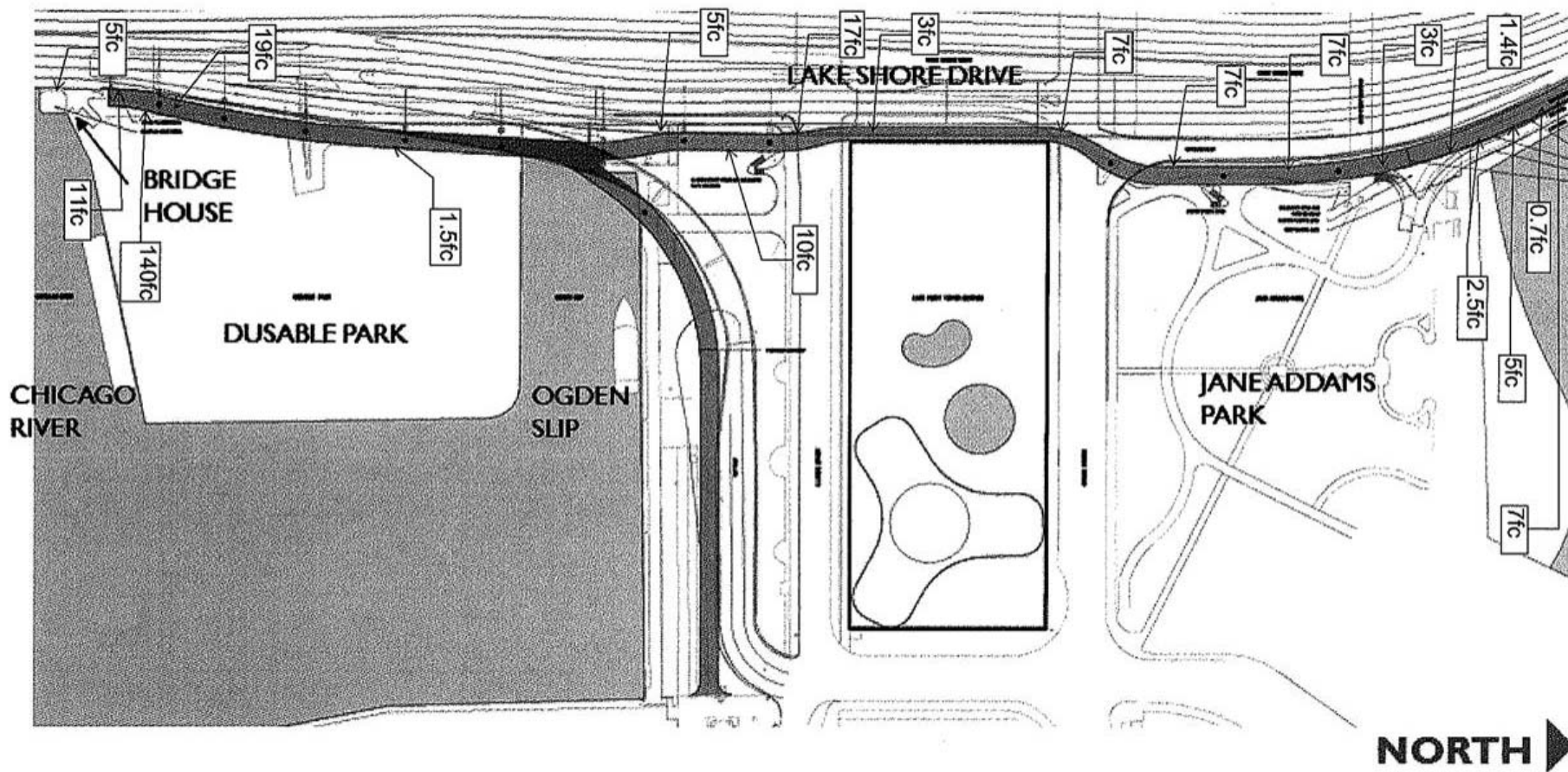
THE CITY OF CHICAGO • DEPARTMENT OF TRANSPORTATION • DIVISION OF PROJECT DEVELOPMENT









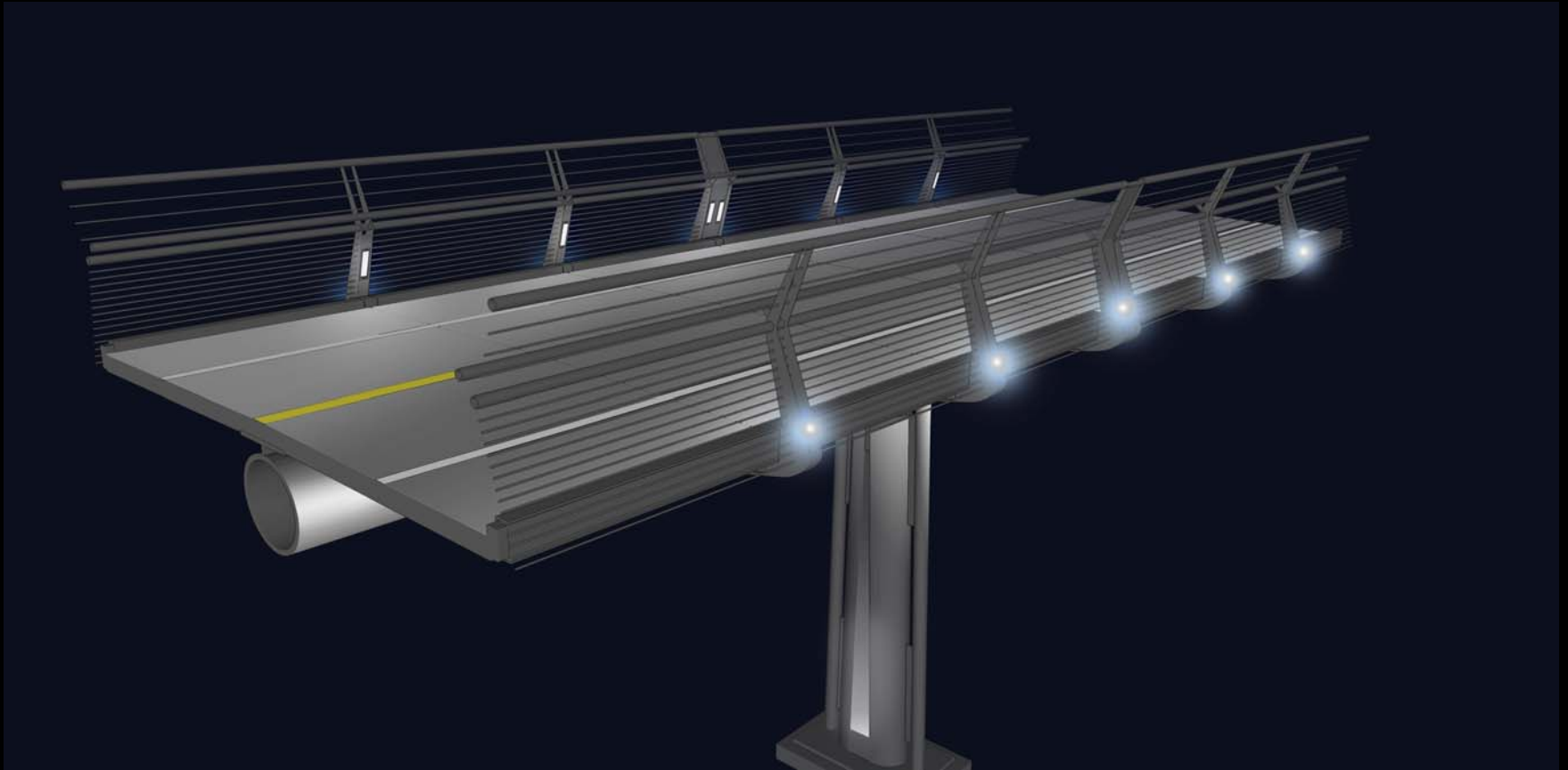


**RICHARD M DALEY, MAYOR**

THE CITY OF CHICAGO • DEPARTMENT OF TRANSPORTATION • DIVISION OF PROJECT DEVELOPMENT

Photometrics along the Path

**Lakefront Trail Improvement**









## LEGEND

GYMNOCLADUS DIOICA  
'PRAIRIE TITAN'

MALUS 'DREAM PINK'



ROSA RUGOSA 'NEARLY WILD'

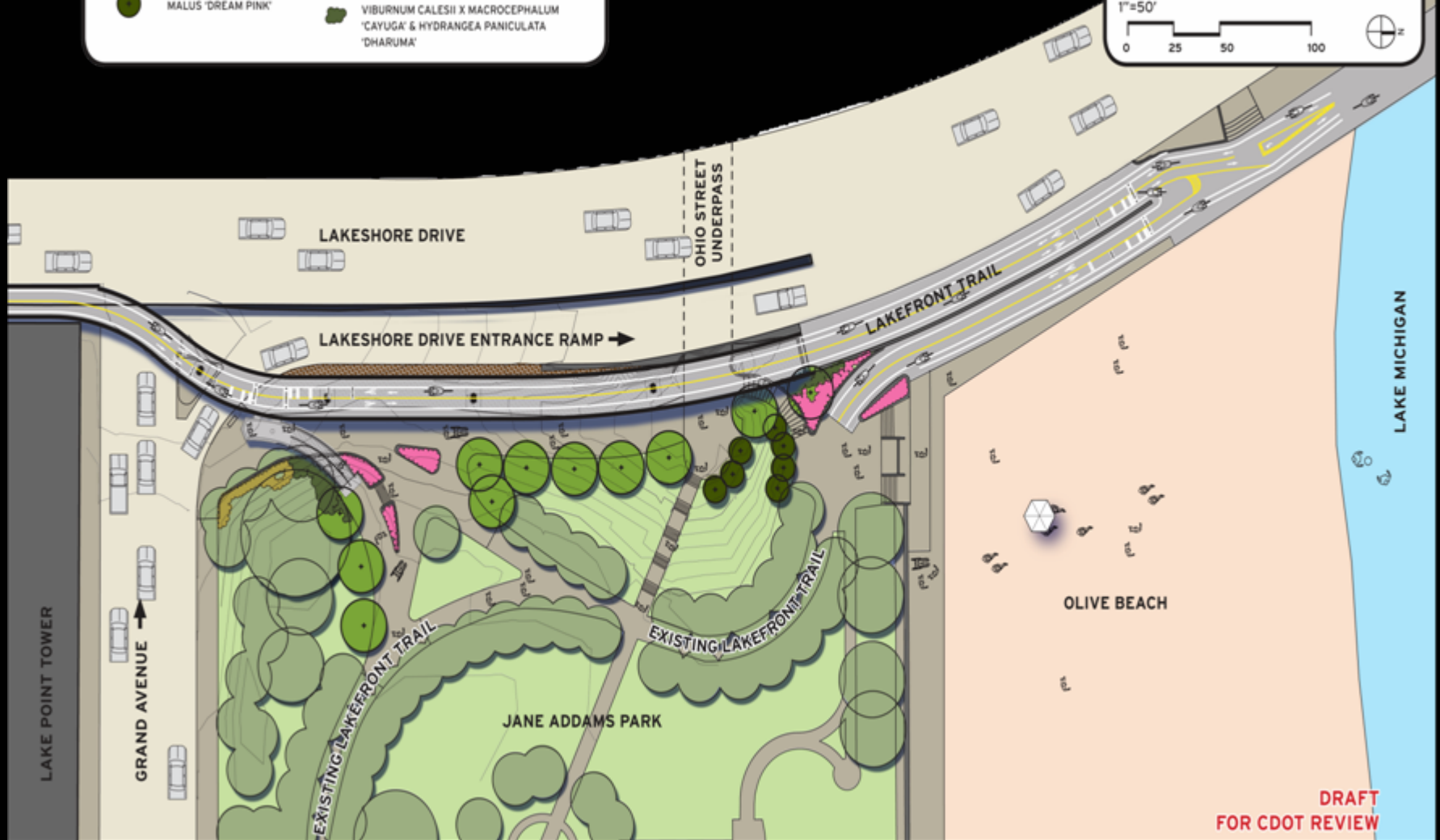


HYDRANGEA QUERCIFOLIA 'PEE WEE'

VIBURNUM CALESII X MACROCEPHALUM  
'CAYUGA' & HYDRANGEA PANICULATA  
'DHARUMA'LAKEFRONT TRAIL  
JANE ADDAMS PARK AND  
OLIVE BEACH  
OPTION 1

1"=50'

0 25 50 100

DRAFT  
FOR CDOT REVIEW



## SHADE AND ORNAMENTAL TREES



LARIX DECIDUA



GYMNOCLADUS DIOICA  
'PRAIRIE TITAN'



SYRINGA PEKINENSIS  
'CHINA SNOW'



MALUS 'DREAM PINK'

## SHRUBS AND ORNAMENTAL GRASS



ROSA RUGOSA 'NEARLY WILD'



HYDRANGEA QUERCIFOLIA 'PEE WEE'



HYDRANGEA PANICULATA  
'DHARUMA'



VIBURNUM CADESII X  
MACROCEPHALUM 'CAYUGA'



SPIRAEA X CINEREA 'GREFSHEIM'



SCHIZACHYRIUM SCOPARIUM



SPOROBOLUS HETEROLEPIS

**Landscape: Proposed Plants – Jane Addams Park and Olive Beach**



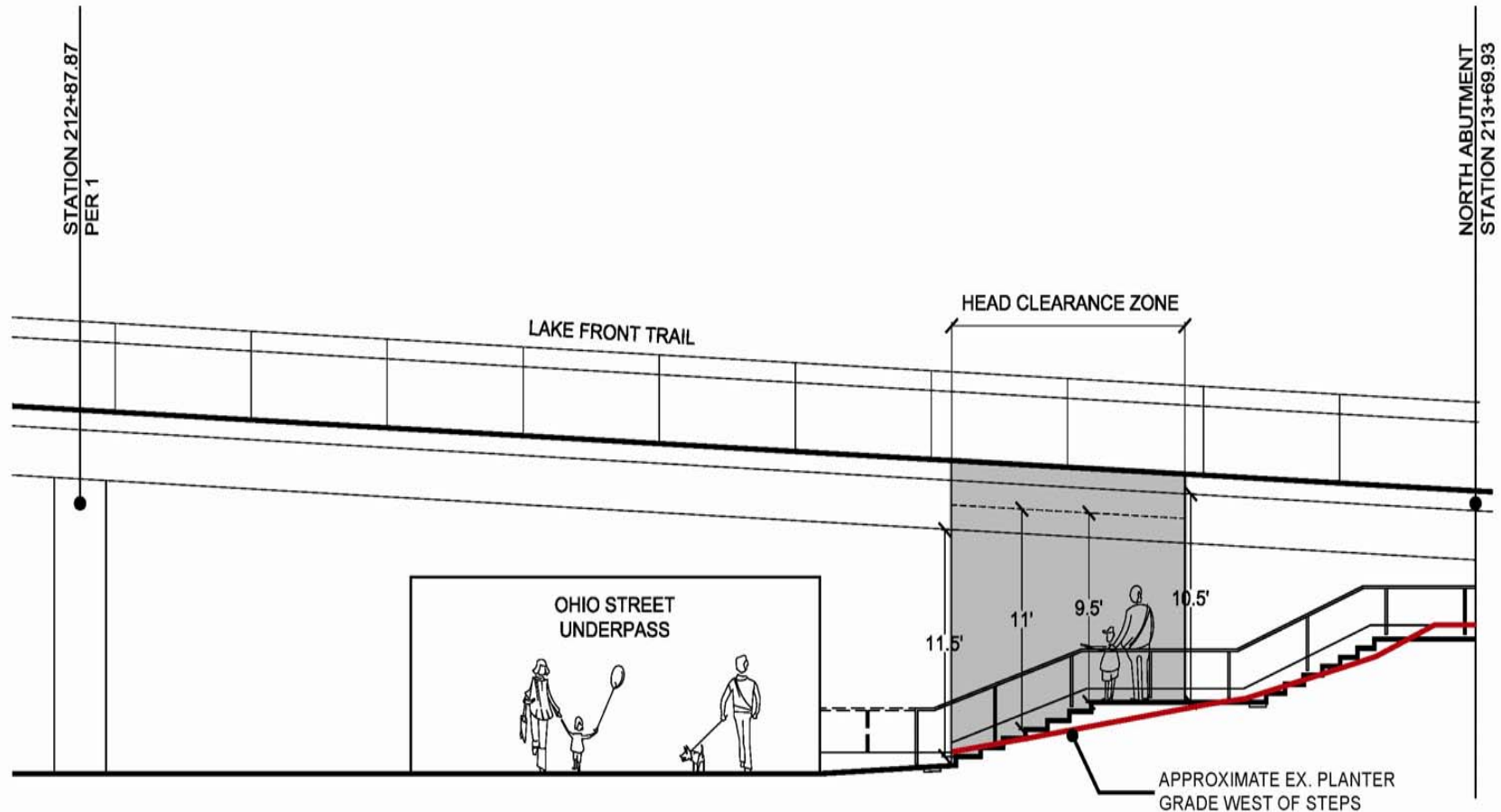
APPROXIMATE HEAD CLEARANCE HEIGHTS -  
EX. STAIR IMAGERY - LSK B1 20100611

**RICHARD M DALEY, MAYOR**

THE CITY OF CHICAGO • DEPARTMENT OF TRANSPORTATION • DIVISION OF PROJECT DEVELOPMENT

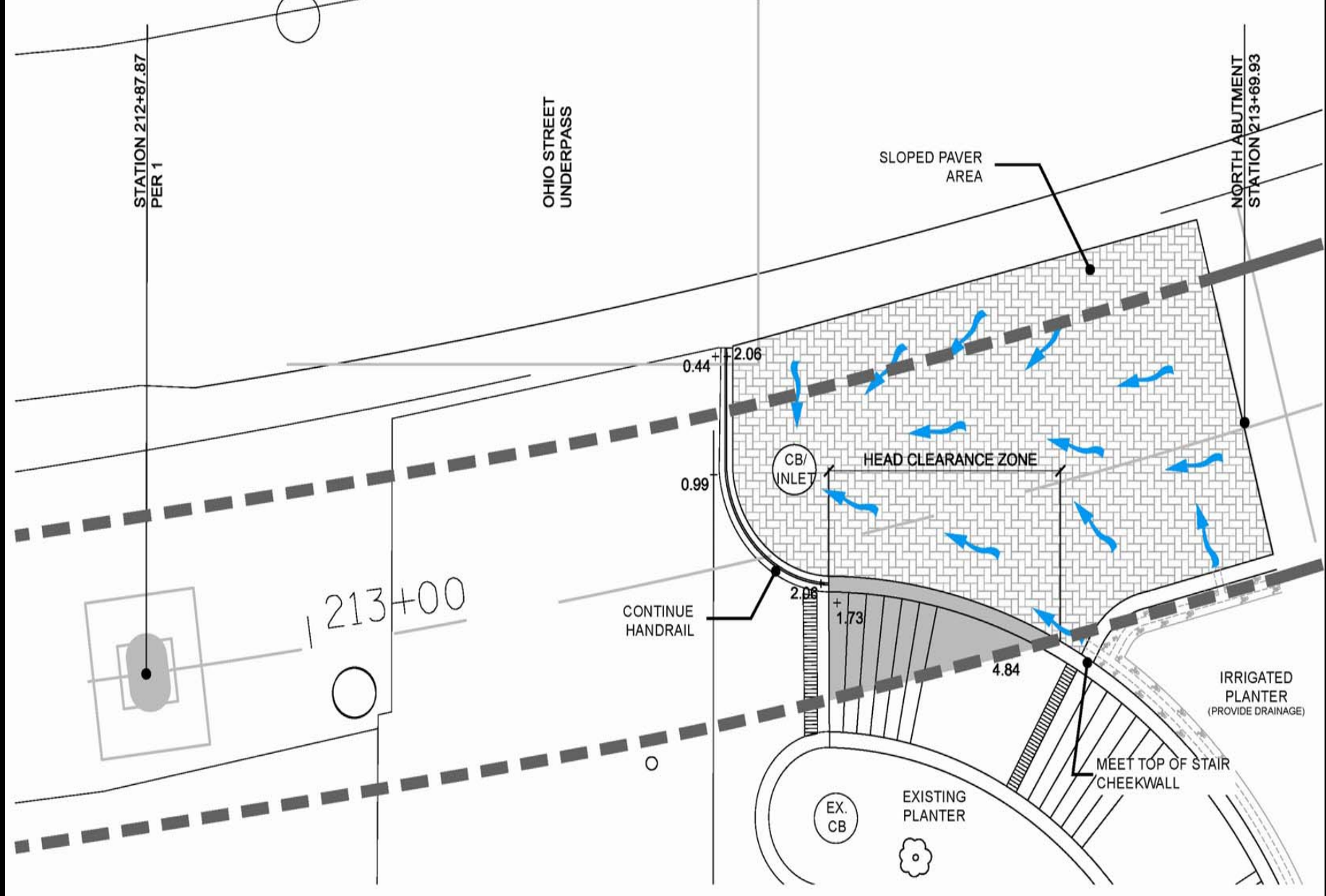
Jane Addams Park Stairs  
At Ohio Street Tunnel  
**Lakefront Trail Improvement**





APPROXIMATE HEAD CLEARANCE HEIGHTS  
LSK A 20100611





**RICHARD M DALEY, MAYOR**

THE CITY OF CHICAGO • DEPARTMENT OF TRANSPORTATION • DIVISION OF PROJECT DEVELOPMENT

Head Clearance at Ohio Street  
Lakefront Trail Improvement

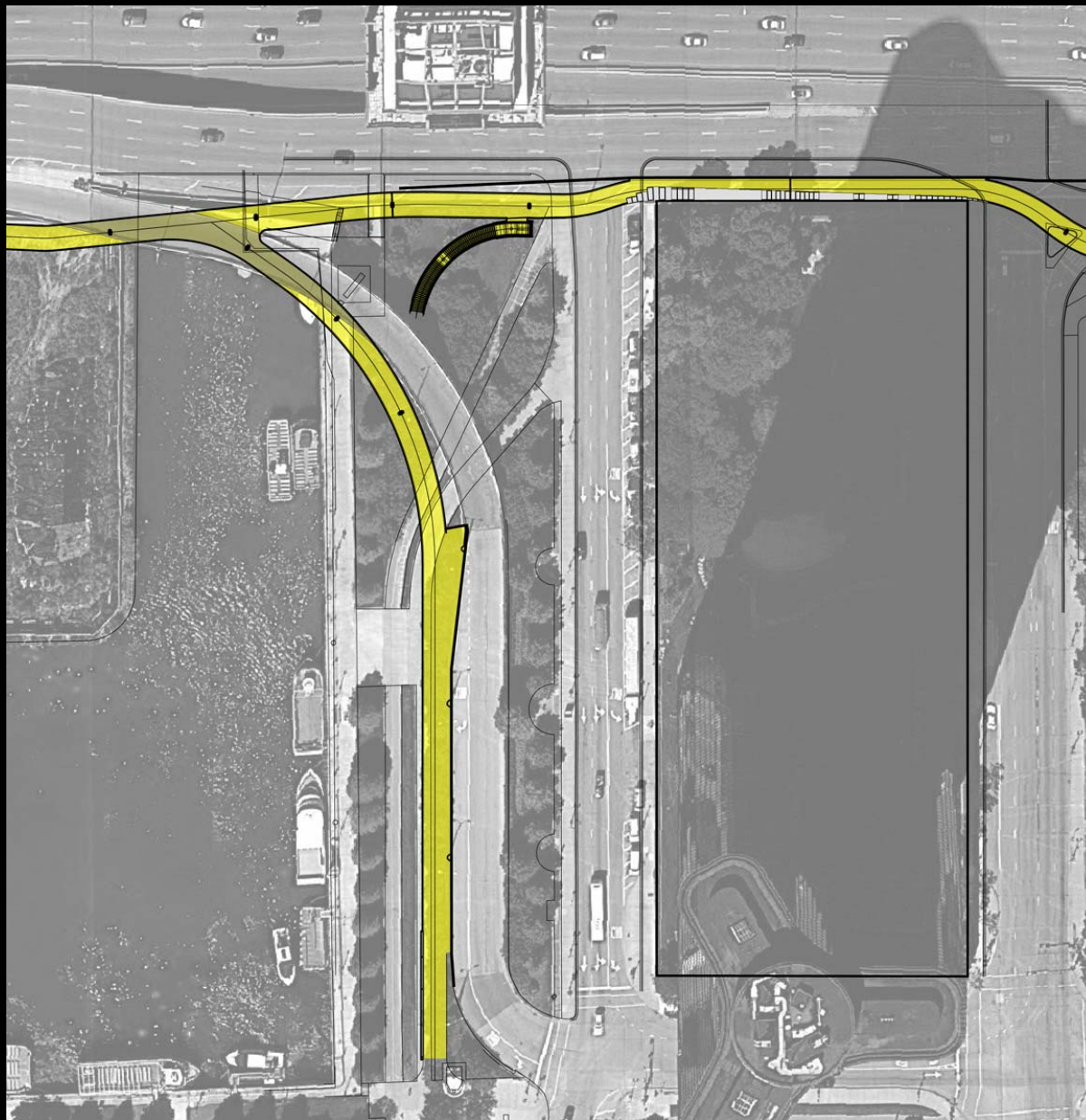


**RICHARD M DALEY, MAYOR**

THE CITY OF CHICAGO • DEPARTMENT OF TRANSPORTATION • DIVISION OF PROJECT DEVELOPMENT

Proposed View  
Looking West on Grand Avenue  
**Lakefront Trail Improvement**





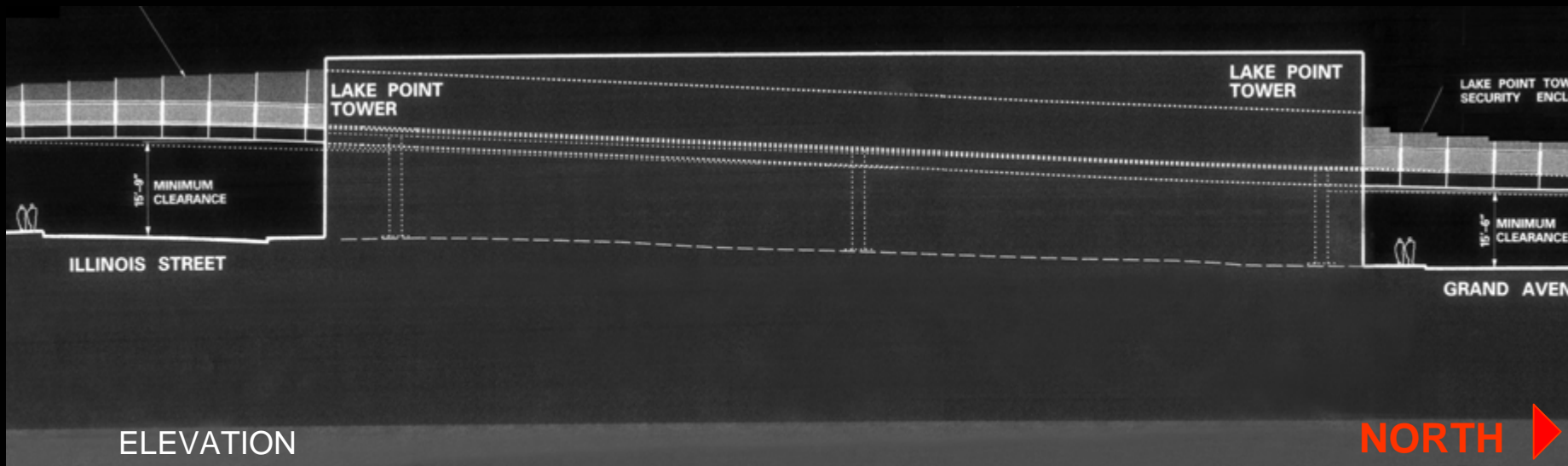
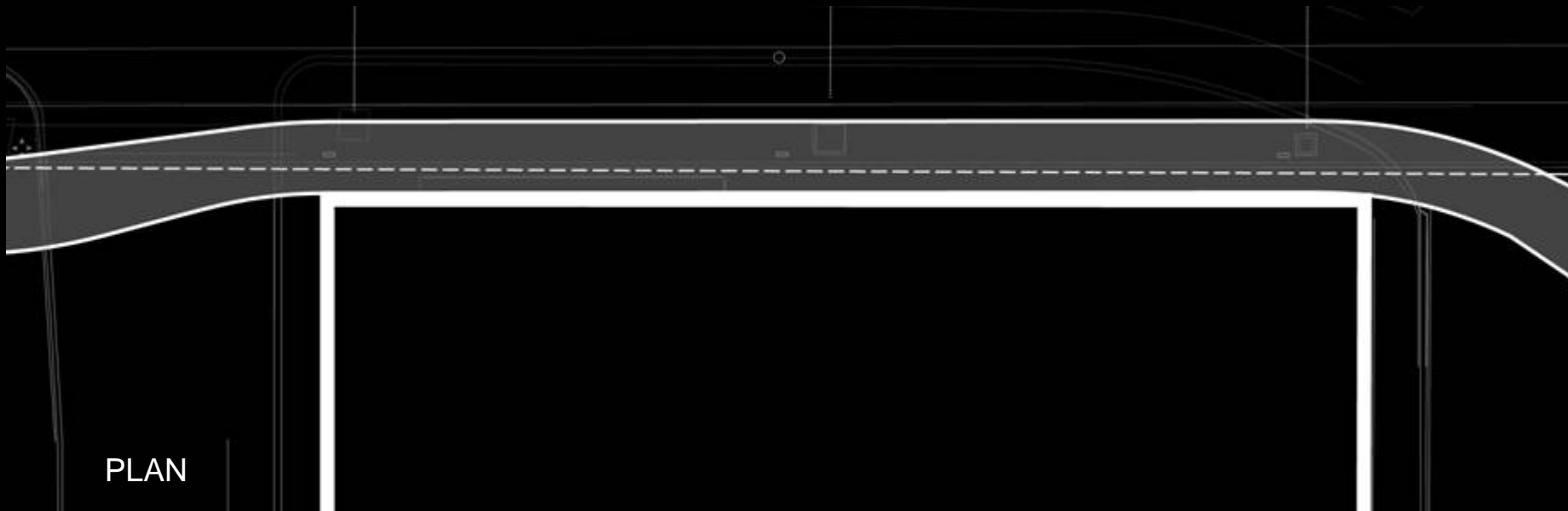
**NORTH** ►

**RICHARD M DALEY, MAYOR**

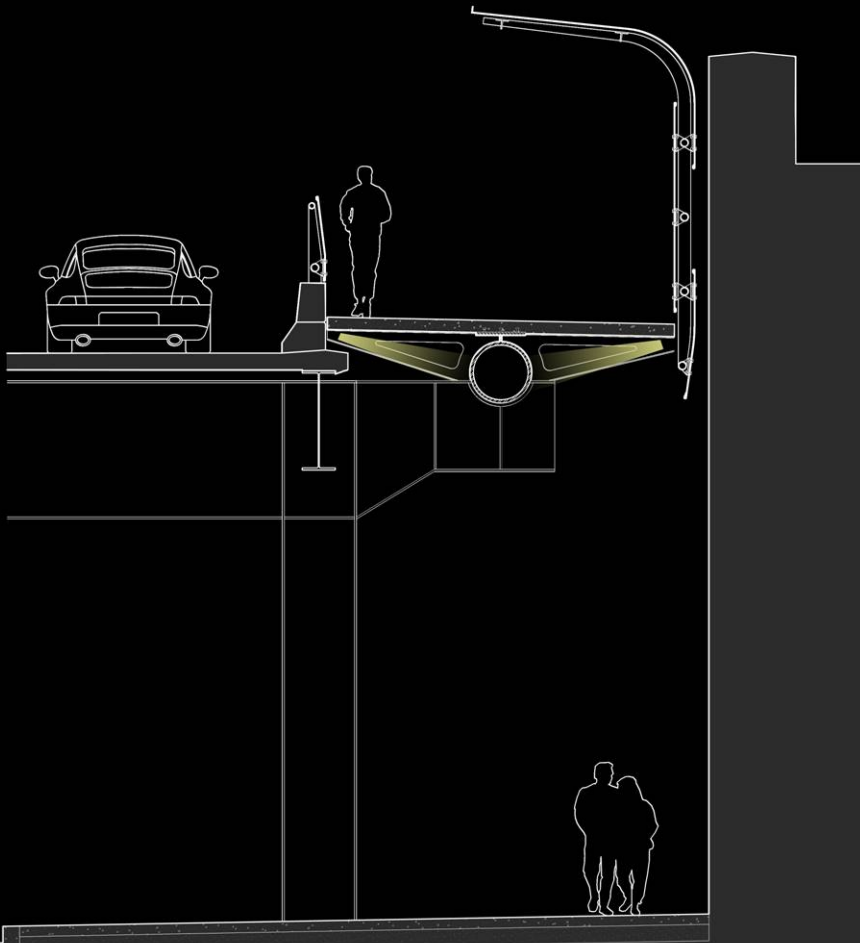
THE CITY OF CHICAGO • DEPARTMENT OF TRANSPORTATION • DIVISION OF PROJECT DEVELOPMENT

Plan and Elevation  
At Lake Point Tower  
**Lakefront Trail Improvement**









PARTIAL ENCLOSURE SECTION

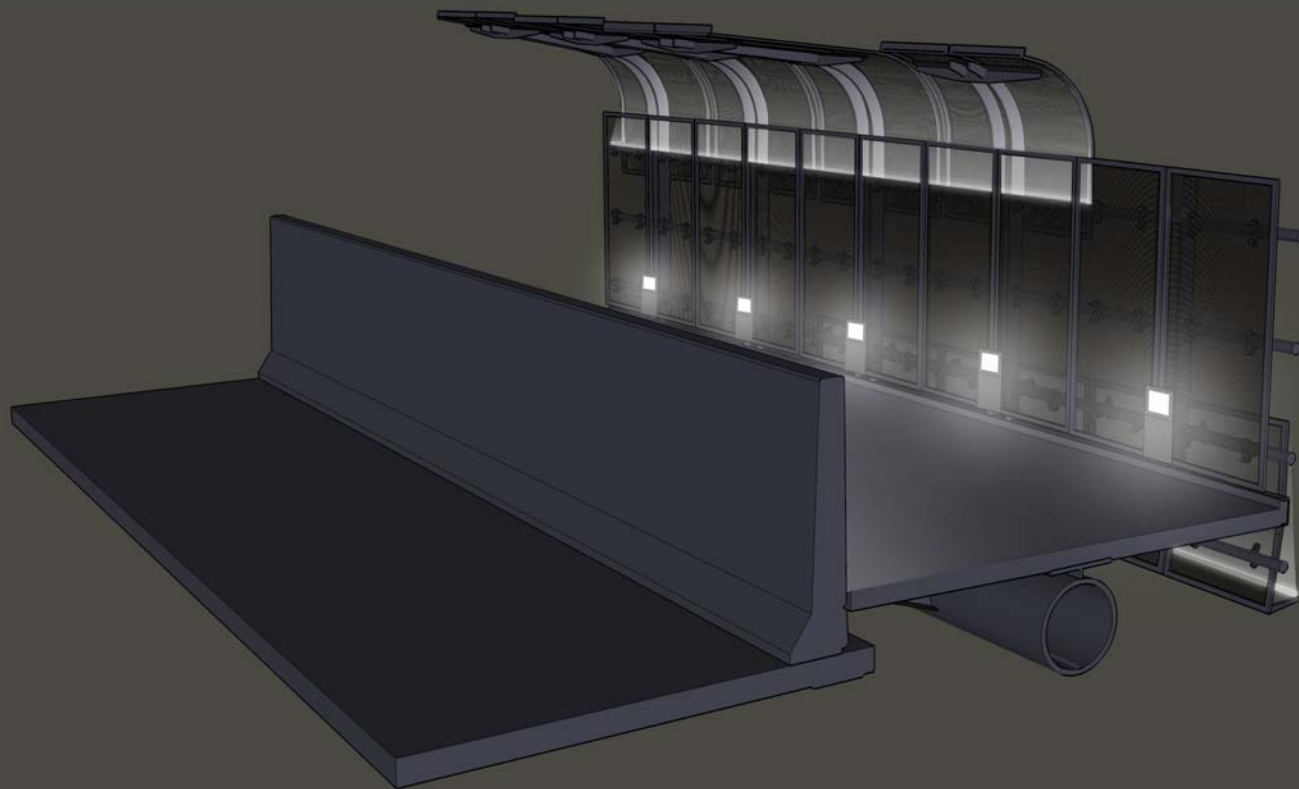
Trail Adjacent to LPT with  
Security Barrier Section  
Lakefront Trail Improvement





**RICHARD M DALEY, MAYOR**  
THE CITY OF CHICAGO • DEPARTMENT OF TRANSPORTATION • DIVISION OF PROJECT DEVELOPMENT

Proposed  
View North From Lake Shore Dr.  
**Lakefront Trail Improvement**





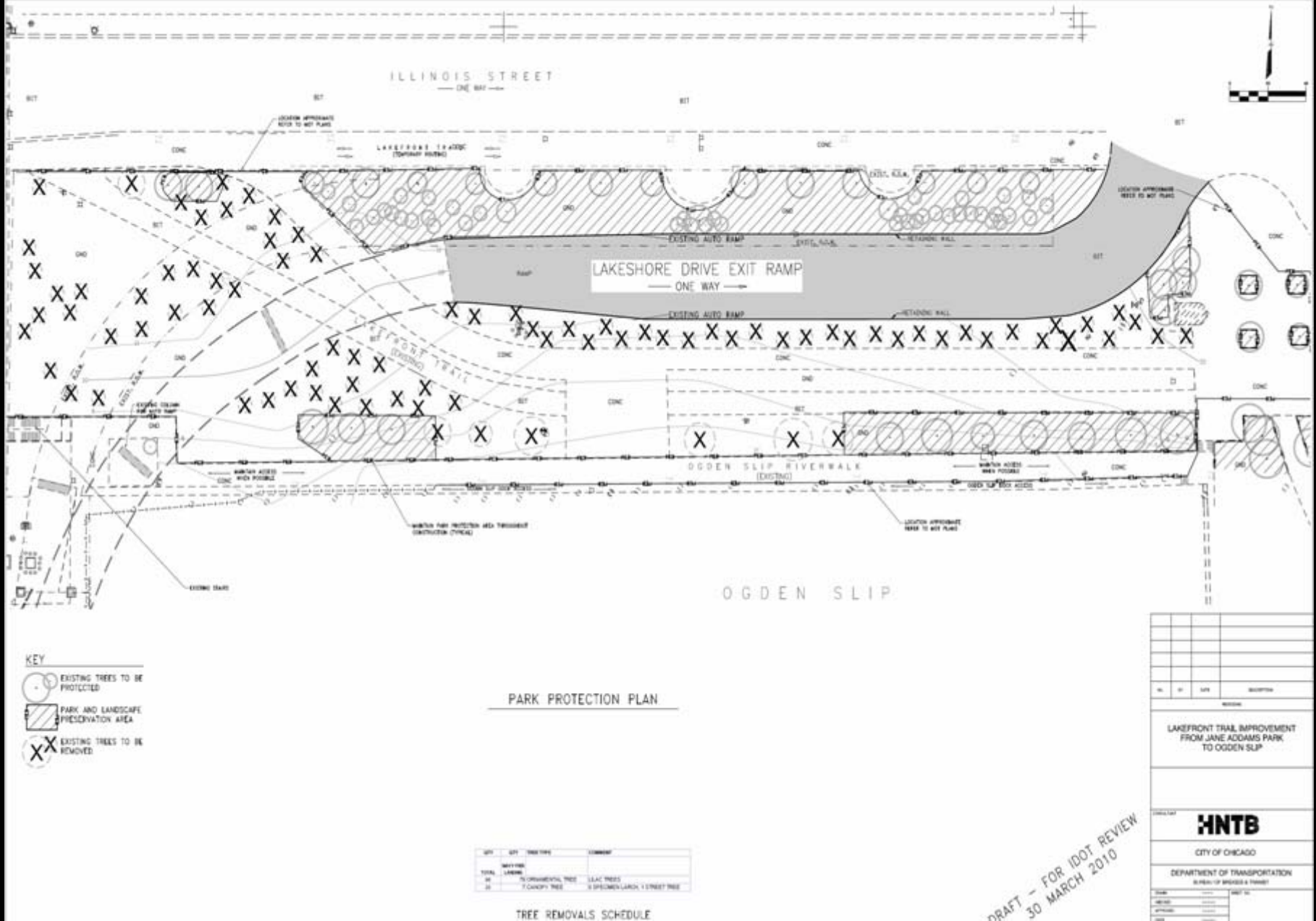


**RICHARD M DALEY, MAYOR**

THE CITY OF CHICAGO • DEPARTMENT OF TRANSPORTATION • DIVISION OF PROJECT DEVELOPMENT

Proposed  
View West From Illinois St.  
**Lakefront Trail Improvement**

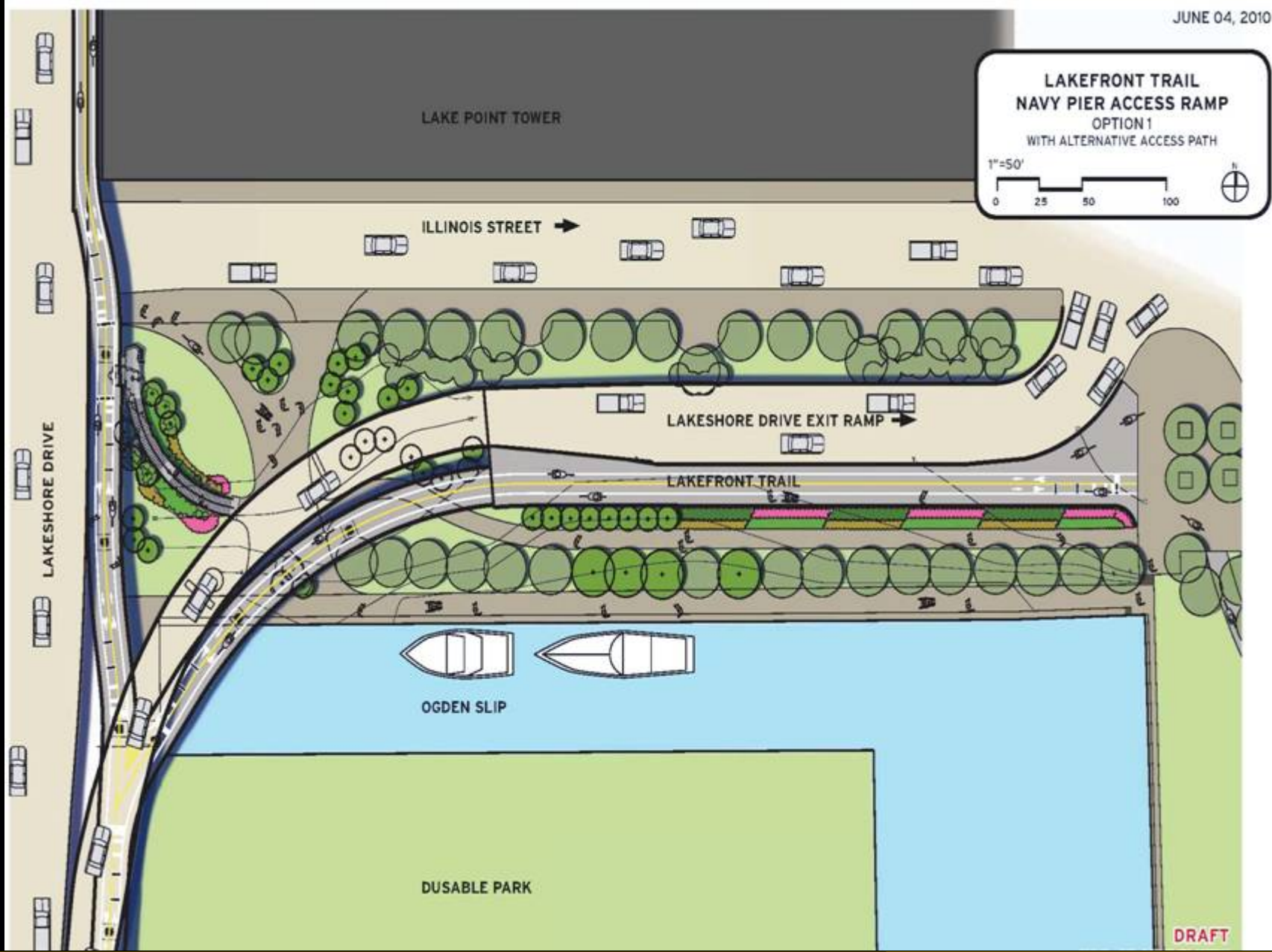




**RICHARD M DALEY, MAYOR**

THE CITY OF CHICAGO • DEPARTMENT OF TRANSPORTATION • DIVISION OF PROJECT DEVELOPMENT

Park Protection Plan at Ramp  
Lakefront Trail Improvement





**RICHARD M DALEY, MAYOR**

THE CITY OF CHICAGO • DEPARTMENT OF TRANSPORTATION • DIVISION OF PROJECT DEVELOPMENT

Trail Ramp at Navy Pier  
**Lakefront Trail Improvement**





**RICHARD M DALEY, MAYOR**

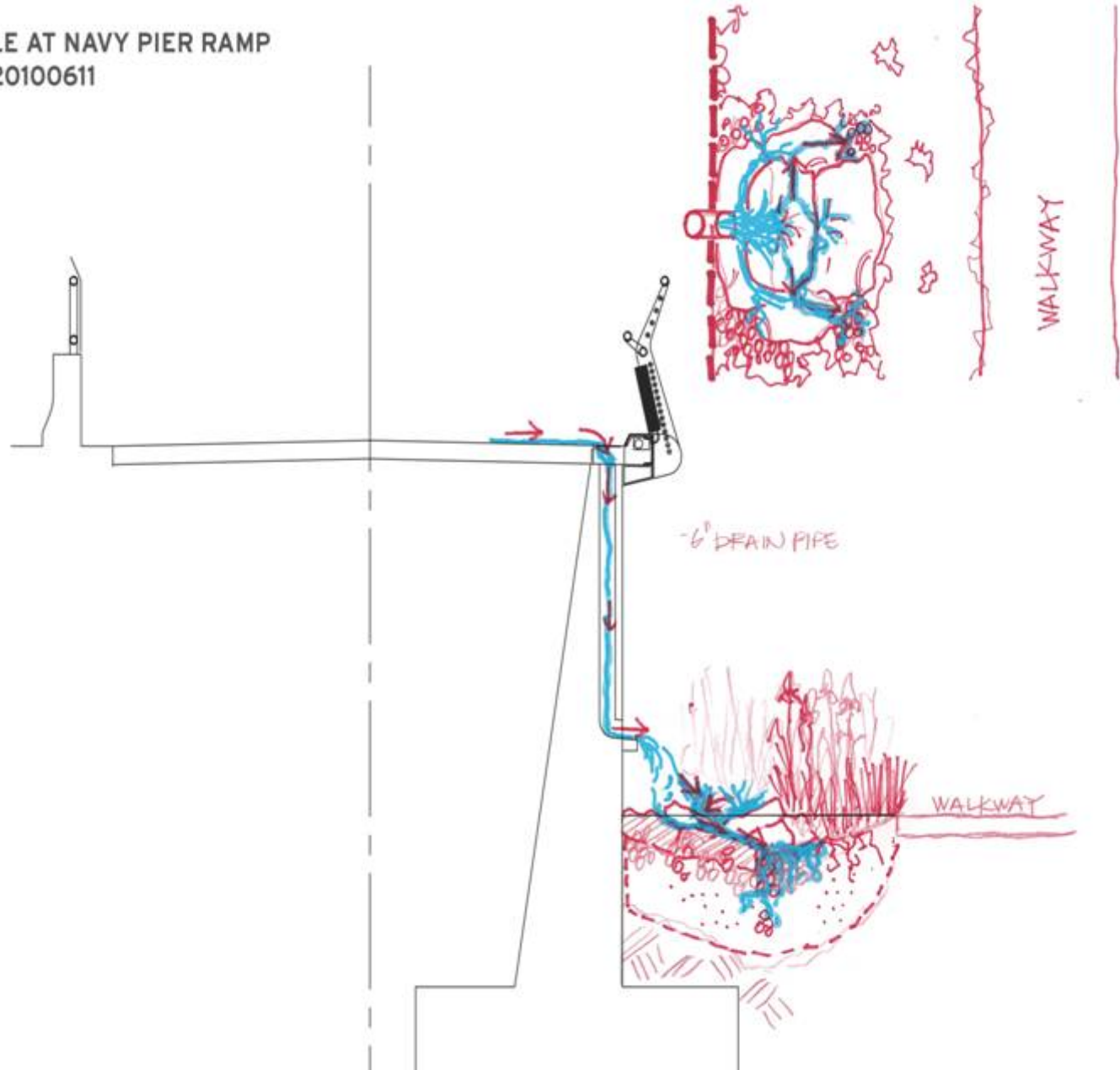
THE CITY OF CHICAGO • DEPARTMENT OF TRANSPORTATION • DIVISION OF PROJECT DEVELOPMENT

Trail Ramp at Navy Pier  
**Lakefront Trail Improvement**

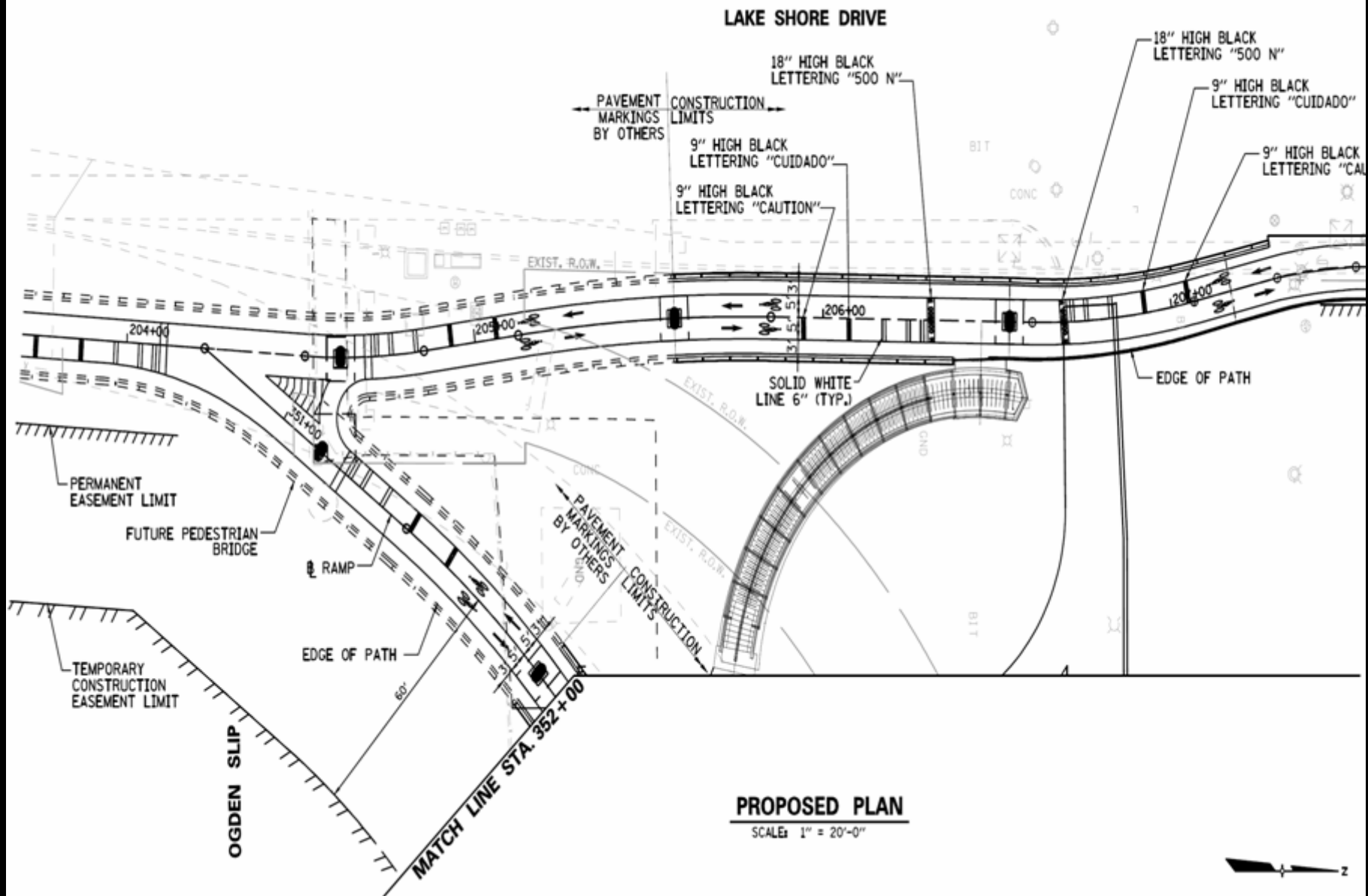


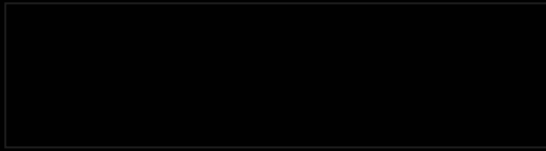
**RICHARD M DALEY, MAYOR**  
THE CITY OF CHICAGO • DEPARTMENT OF TRANSPORTATION • DIVISION OF PROJECT DEVELOPMENT

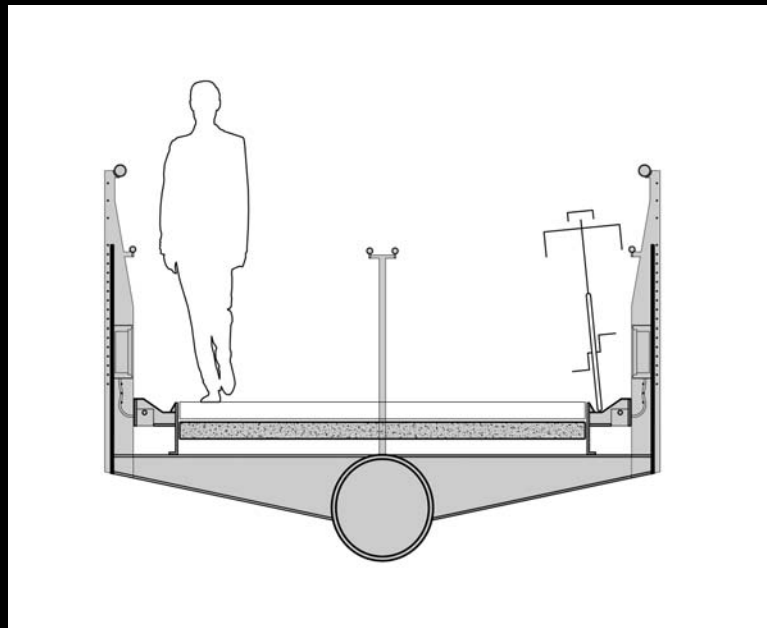
Navy Pier Landing Landscape  
Option 1 Rendering  
**Lakefront Trail Improvement**





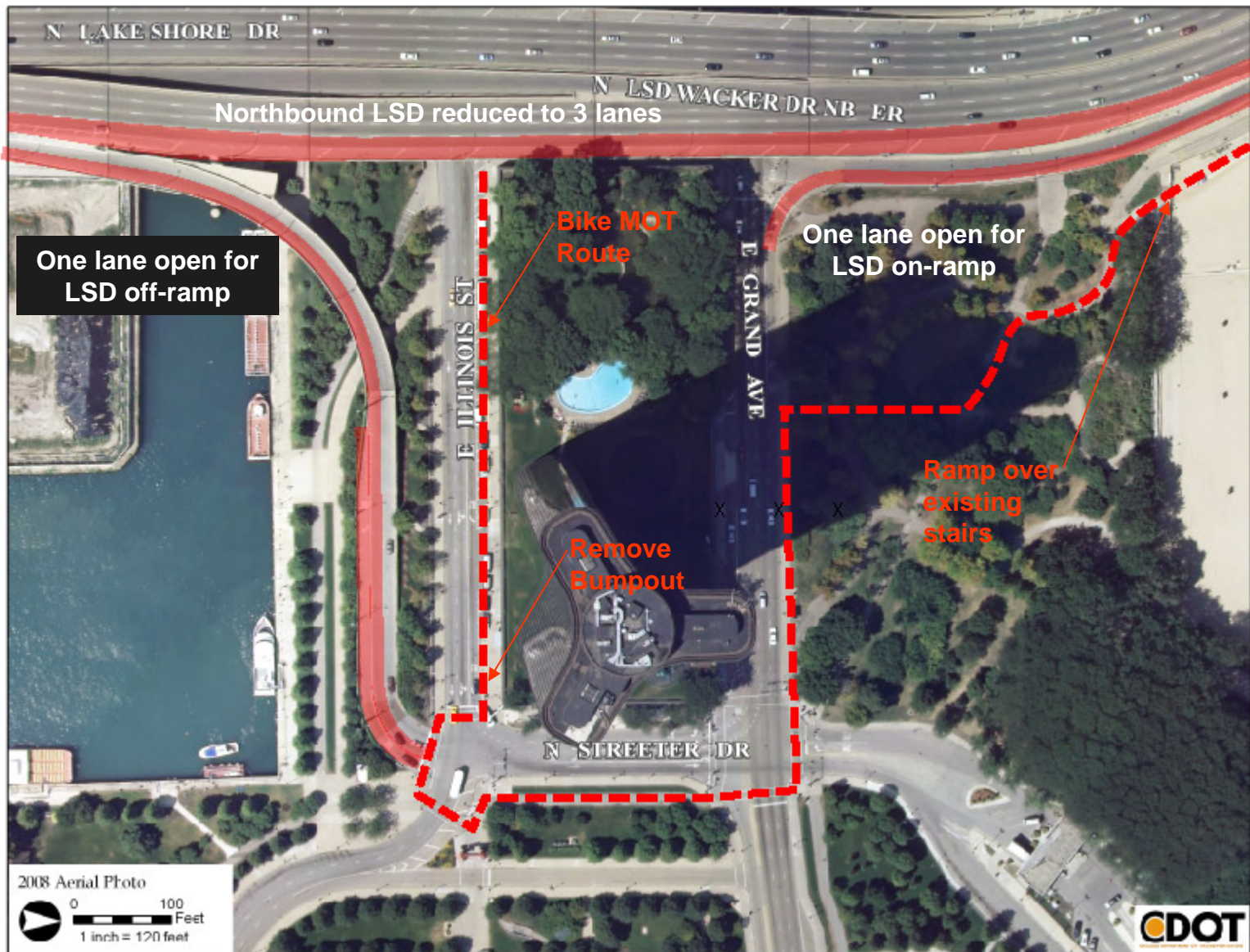








# Maintenance of Traffic



MOT Overview

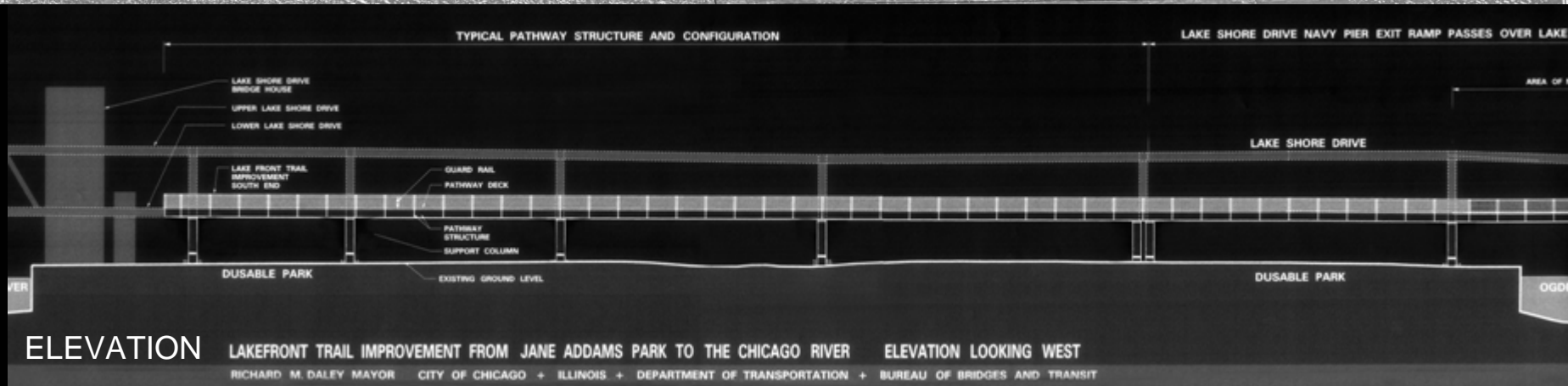
Lakefront Trail Improvement

**RICHARD M DALEY, MAYOR**

THE CITY OF CHICAGO • DEPARTMENT OF TRANSPORTATION • DIVISION OF PROJECT DEVELOPMENT

Segments 1 and 2  
Lakefront Trail through  
DuSable Park  
and the Chicago River Bridge

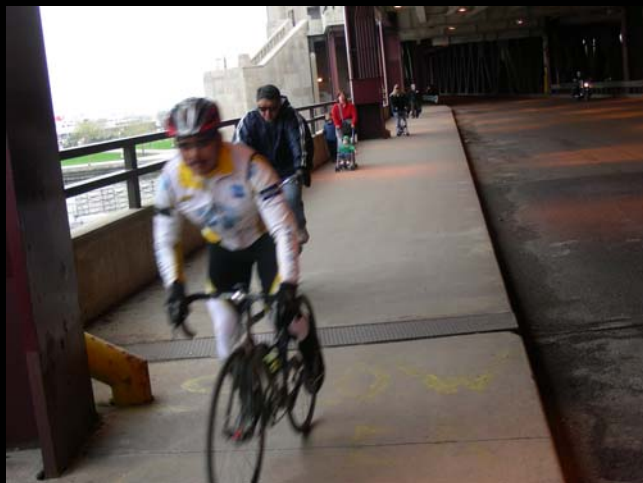




**RICHARD M DALEY, MAYOR**

THE CITY OF CHICAGO • DEPARTMENT OF TRANSPORTATION • DIVISION OF PROJECT DEVELOPMENT

Plan and Elevation  
at DuSable Park  
**Lakefront Trail Improvement**







**RICHARD M DALEY, MAYOR**

THE CITY OF CHICAGO • DEPARTMENT OF TRANSPORTATION • DIVISION OF PROJECT DEVELOPMENT

Trail through DuSable Park  
**Lakefront Trail Improvement**











**RICHARD M DALEY, MAYOR**

THE CITY OF CHICAGO • DEPARTMENT OF TRANSPORTATION • DIVISION OF PROJECT DEVELOPMENT

Existing Conditions South End  
**Lakefront Trail Improvement**

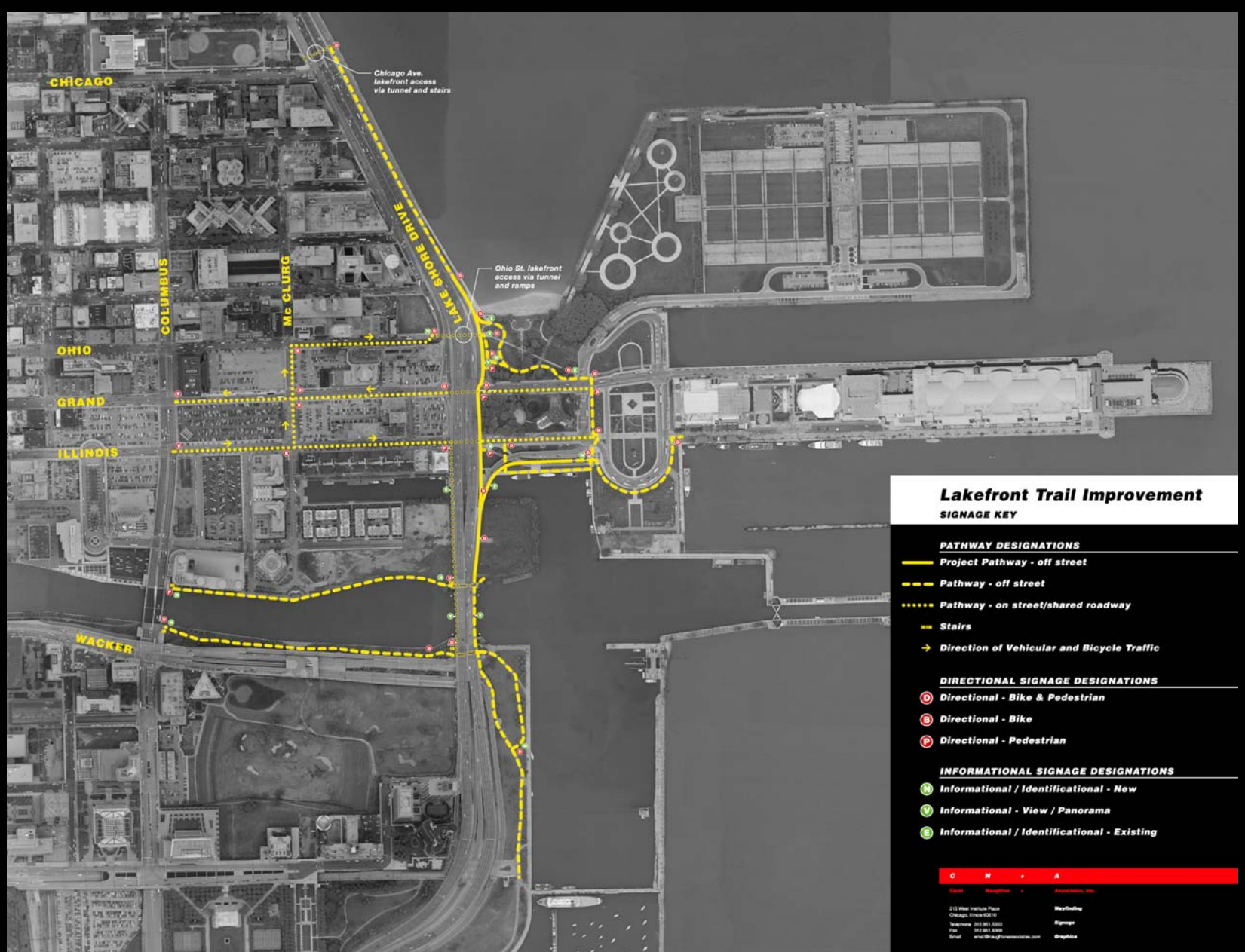




# WAYFINDING

- Wayfinding encompasses all of the ways in which people orient themselves in physical space and navigate from place to place on the Lakefront Trail through:
  - Strategic design to help people understand the trail and to help them identify destinations that can be accessed via the trail, such as the Museum Campus, beaches, and Navy Pier;
  - Assisting people in understanding how to safely use the trail through the use of signage and pavement markings; and finally
  - Including signs, maps, and landmarks as necessary.



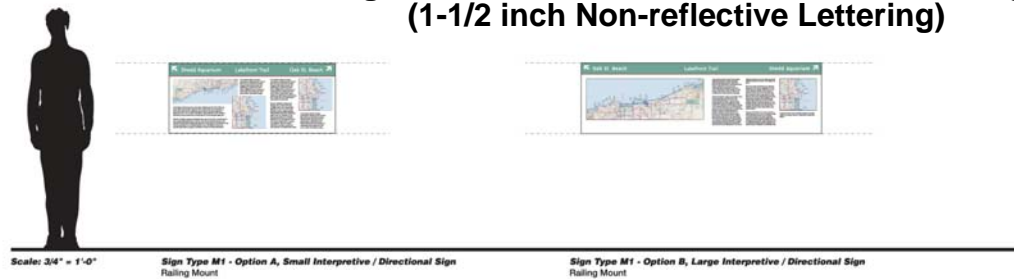




## Sign Type Overview



### Chicago Park District Standard Post-Mounted Sign (1-1/2 inch Non-reflective Lettering)



### Interpretive/Directional Rail-Mounted Sign



### Interpretive/Directional Ground-Mounted Sign

Sign Type Overview

Lakefront Trail Improvement

## Sign Type F3.2



IN PROGRESS	DATE	07/04/10	WAY.14 OF SHEETS PROJECT NO. 27570
	SCALE		
	CONTRACT NO.		

[illegible]



**RICHARD M DALEY, MAYOR**

THE CITY OF CHICAGO • DEPARTMENT OF TRANSPORTATION • DIVISION OF PROJECT DEVELOPMENT

Post-Mounted Sign Perspective

**Lakefront Trail Improvement**



## Sign Type F1

Sign Post Mounting Condition  
Scale: 1/2" = 1'-0"

All materials and fabrication to be consistent with approved existing Chicago Park District Sign Standards

- Panel is 1/8" thick painted steel surface with message (supported structure, p. 5.4/32), Chicago Park District Sign Standards

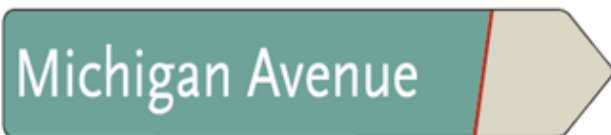
- Support Structure**  
• Welded flat stock construction

- All members 1/2" thick steel
- Cut plate when necessary
- Grind smooth all welds
- Oversize all holes, fabricator to verify all hole locations and diameters

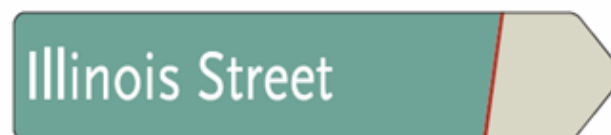
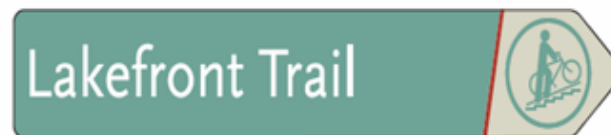
- Paint all edges black

IN PROGRESS

# Sign Type F1



06.07A/B



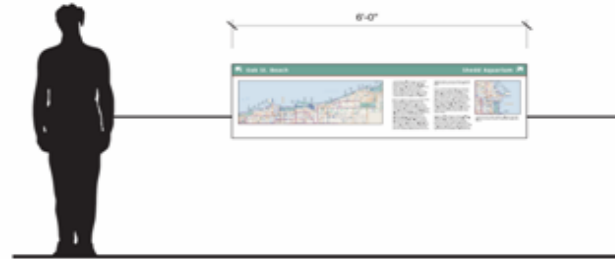
06.10A/B

## Sign Type M1 - Interpretive / Directional Sign, Railing Mount



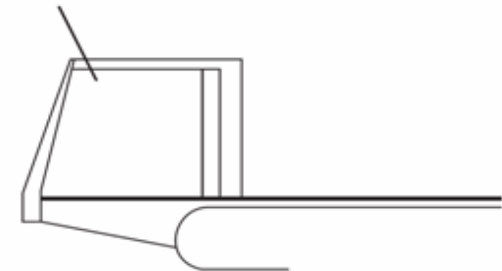
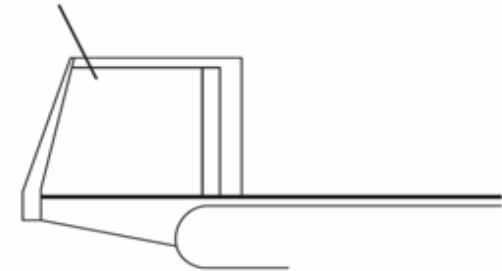
Scale: 3/4" = 1'-0"

**M1 - Option A, Small Interpretive / Directional**  
Mounting Conditions:  
1. To the rail at the top of the stairs  
(to be determined)



Scale: 3/4" = 1'-0"

**M1 - Option B, Large Interpretive / Directional**  
Mounting Conditions:  
1. To the rail at the top of the stairs  
(to be determined)



Scale: N.T.S.

**M1 - Option A, Small Interpretive**



Scale: N.T.S.

**M1 - Option B, Large Interpretive**

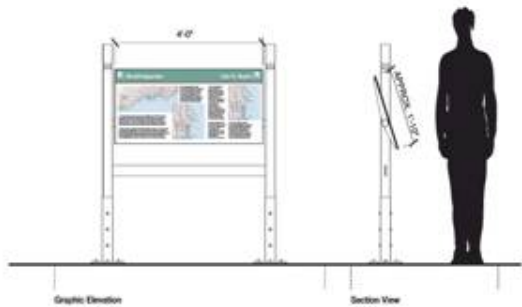
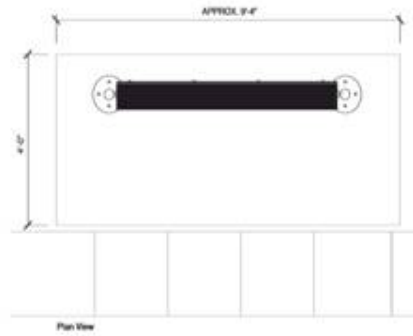
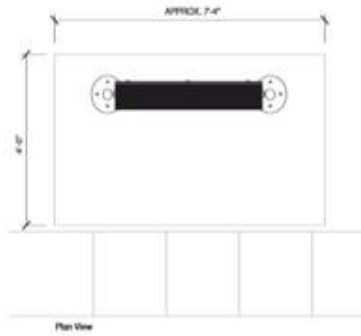




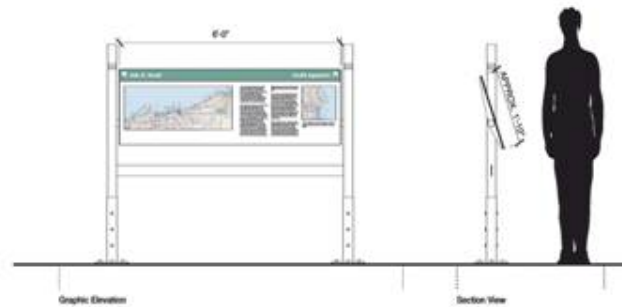
**RICHARD M DALEY, MAYOR**

THE CITY OF CHICAGO • DEPARTMENT OF TRANSPORTATION • DIVISION OF PROJECT DEVELOPMENT

Rail-Mounted Sign Perspective  
at Stair Landing  
**Lakefront Trail Improvement**



**M2 - Option A, Small Interpretive / Directional**  
Mounting Conditions:  
1. Freestanding ground mount



**M2 - Option B, Large Interpretive / Directional**  
Mounting Conditions:  
1. Freestanding ground mount



**M2 - Option A, Small Interpretive**



**M2 - Option B, Large Interpretive**

NO.	BY	DATE	DESCRIPTION
LAKEFONT TRAIL IMPROVEMENT FROM JANE ADDAMS PARK TO THE CHICAGO RIVER			
SIGN TYPE M2			
PROJECT TEAM David Wright & Associates, Inc. 171 West Madison Street, Suite 100 Chicago, Illinois 60601 312.467.1200 312.467.1202 FAX			
CITY OF CHICAGO			
DEPARTMENT OF TRANSPORTATION BUREAU OF STREETS & TRANSPORT			
DESIGNED	CNA	DATE	08/17/17
APPROVED		DATE	08/17/17
PROJECT		DATE	08/17/17
PROJECT		DATE	08/17/17
WAY.17			

IN PROGRESS



# Questions

