

Chicago Rivers Ecology and Governance Group

Areas of Focus and Coordination

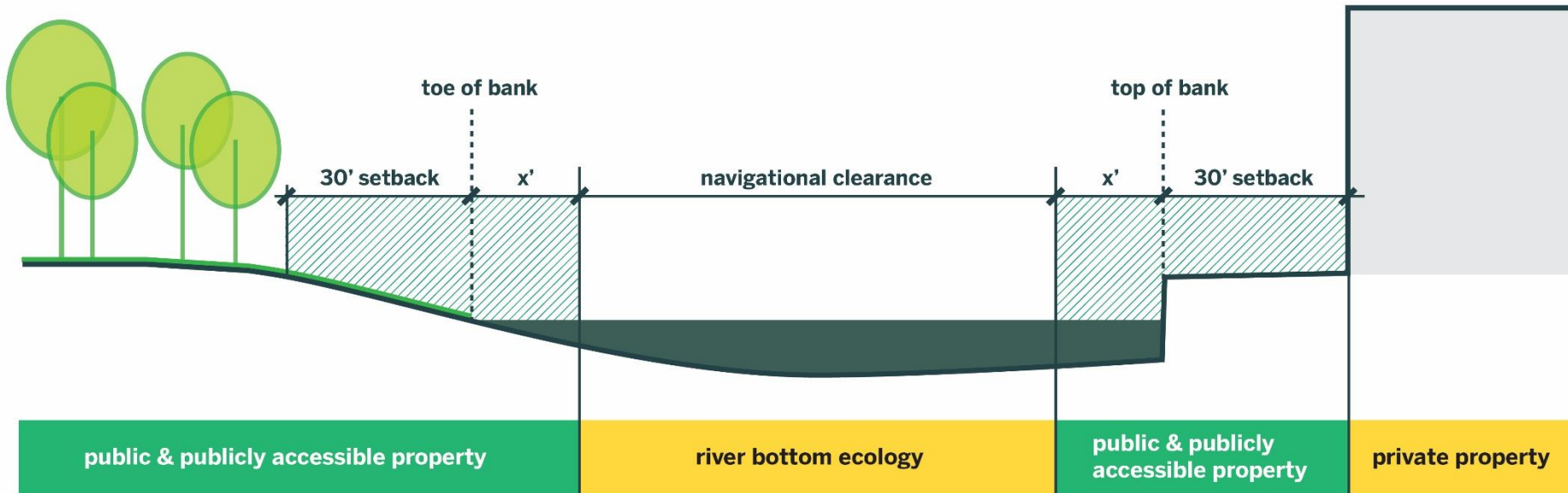
Navigational Clearance Guide

Chicago River, IL		Calumet River, IL	
Main Branch :	170 ft	Main River	135.7 ft
North Branch:	40.4 ft		
North Branch Canal:	56.9 ft	Little Calumet River West, IL	52 ft
South Branch:	125 ft	Little Calumet River East, IL, IN	200 ft
West Fork South Branch:	140.3 ft	Grand Calumet River, IL	12 ft
South Fork South Branch:	90 ft	Calumet Sag Channel, IL	188.5 ft
Chicago Sanitary and Ship Canal	45 ft		

* x = river width minus navigational clearance

 **Area of Focus**

 **Area for Coordination**



I. Summarize and make available past plans and studies

People and the River: Perception and Use of Chicago Waterways for Recreation.

This report describes an interrelated set of social science investigations conducted for the ChicagoRivers Demonstration Project. The purpose of these studies was to understand how user and interest groups currently perceive and use the Chicago and Calumet River corridors, and how they would like to see the corridors improved for recreation and related values. An...

Author(s): P. H. Gobster; L. M. Westphal
Year: 1998
Keywords: river corridor improvement, urban recreation, ChicagoRivers Demonstration Project, riparian, greenway
Source: Misc. Publ., Milwaukee, WI: U.S. Department of Interior, National Park Service Rivers, Trails, and Conservation Assistance Program.

Nature and the river: a natural resources report of the Chicago and Calumet waterways.

In 1992, the National Park Service initiated a project to galvanize local interest in the conservation and use of the Chicago Waterway System. The purpose of this project was to promote local stewardship of the waterway system through the integration of economic development, recreation, and environmental conservation. As a result, the ChicagoRivers Demonstration...

Author(s): Barbara J Moore; John D. Rogner; Drew Ullberg
Year: 1998
Keywords:
Source: Chicago Rivers Demonstr. Proj. Rep. Milwaukee, WI: U.S. Department of the Interior, National Park Service, Rivers, Trails, and Conservation Assistance Program. 110 p.

Chicago's living rivers.

Chicago's sister rivers, the Chicago and the Calumet, have been joined together to form a single, intertwined network of waterways. Together they affect downstream waters of the Illinois and Mississippi Rivers to the Gulf of Mexico. By calling them Chicago Area Rivers we recognize the vital role they played in the city's growth while remembering their past as separate...

Author(s): Department of the Interior National Park Service
Year: 1998
Keywords:
Source: Milwaukee, WI: U.S. Department of the Interior, National Park Service, Rivers, Trails, and Conservation Assistance Program. 13 p.

III. Create a working system map

**Dept Planning & Development
Chicago River Shoreline Survey (2004)**

**Purpose: Categorize and inventory existing bank conditions
Establish GIS baseline of riverbank system**

Survey included:

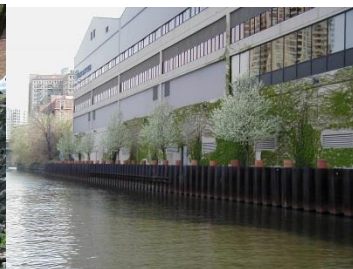
- General slope data (angle, height, stability, condition)**
- General wall data (type, height, uniformity, anchorage, condition)**
- Wildlife habitat suitability, tree coverage, dominant plants**

Summary bank types:

slopes	46%
seawall	39%
slopes over seawalls	13%
walls over slopes	2%



slopes



seawalls

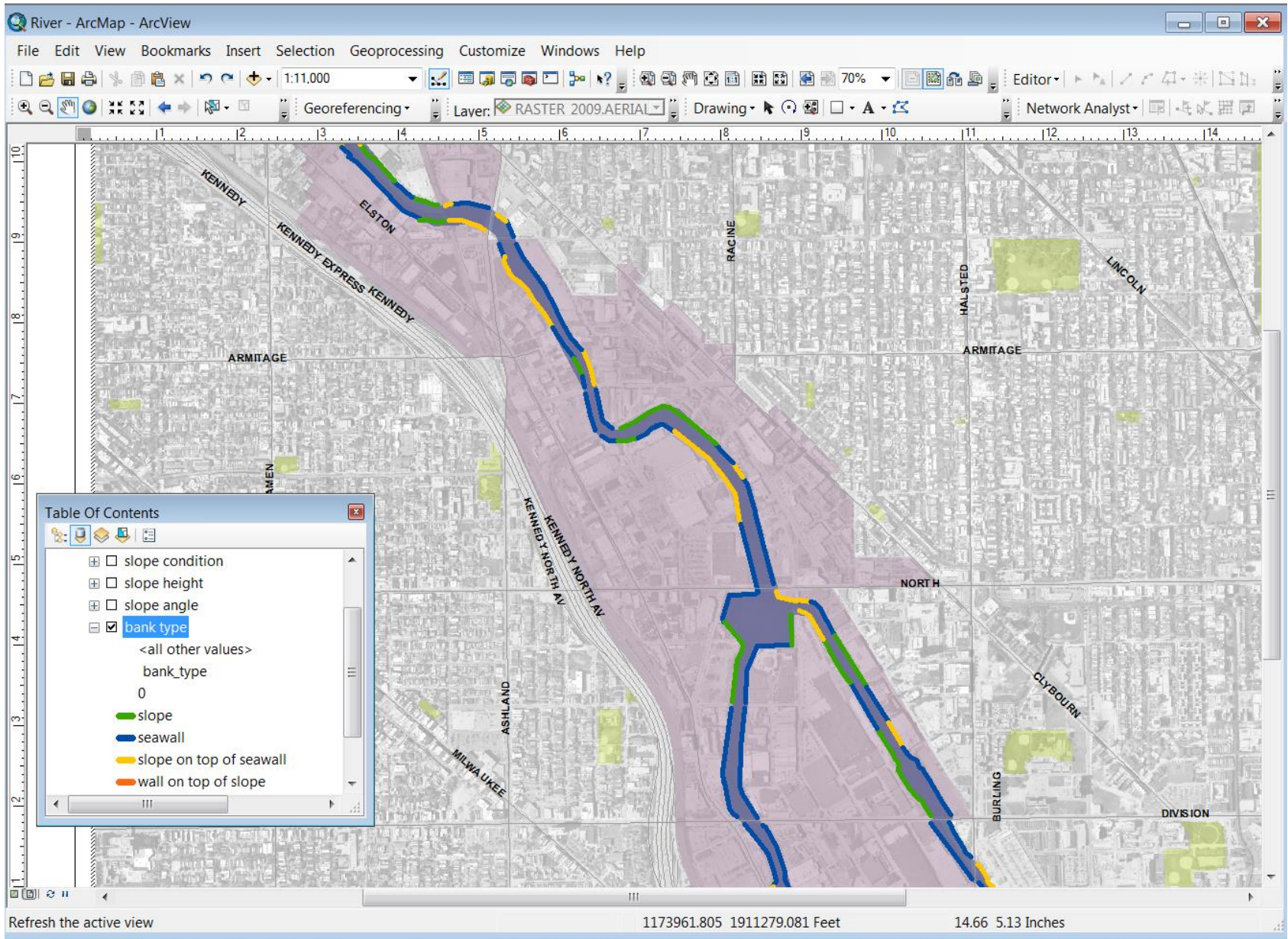


slopes on top of seawall

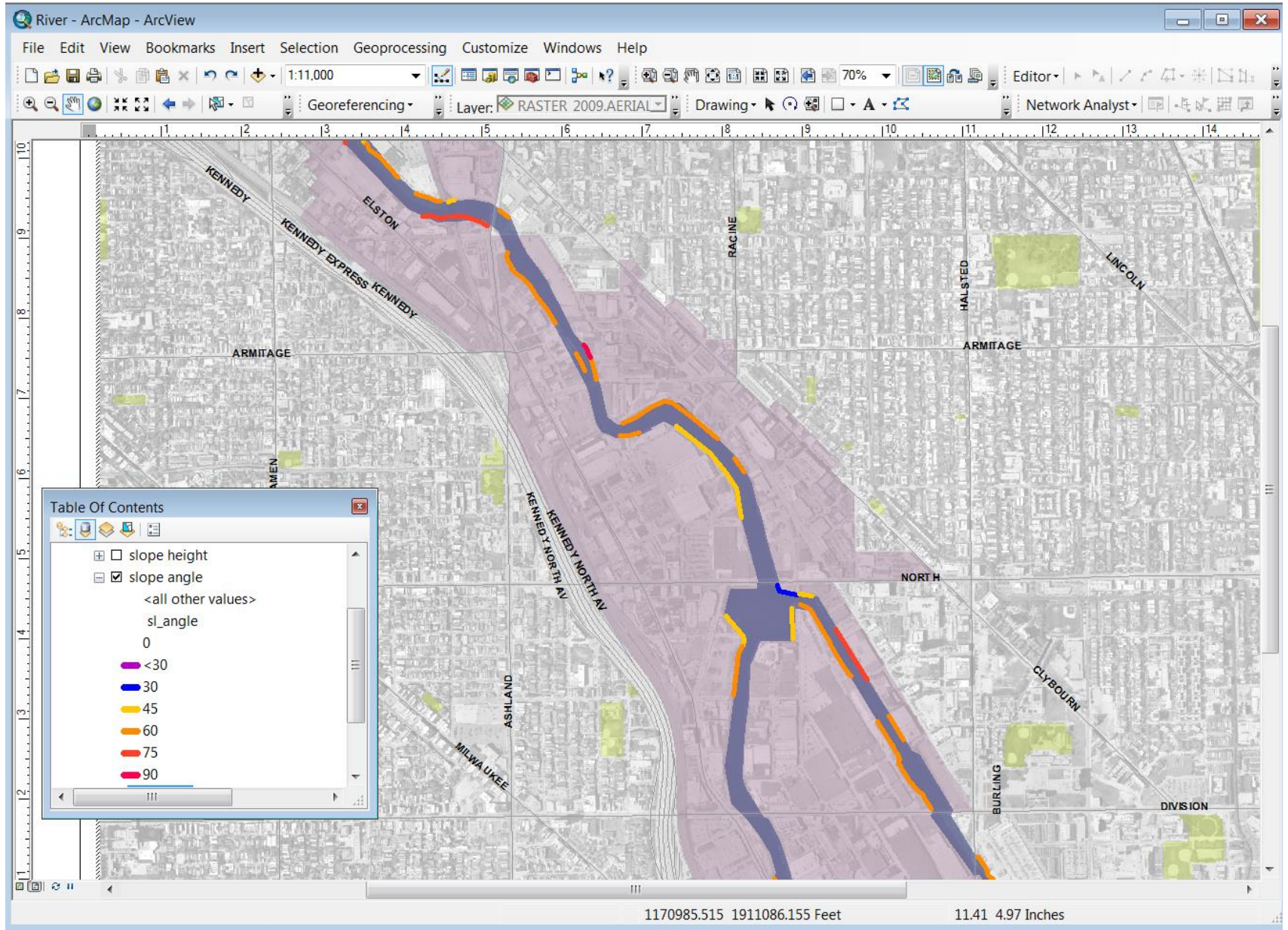


walls on top of slopes

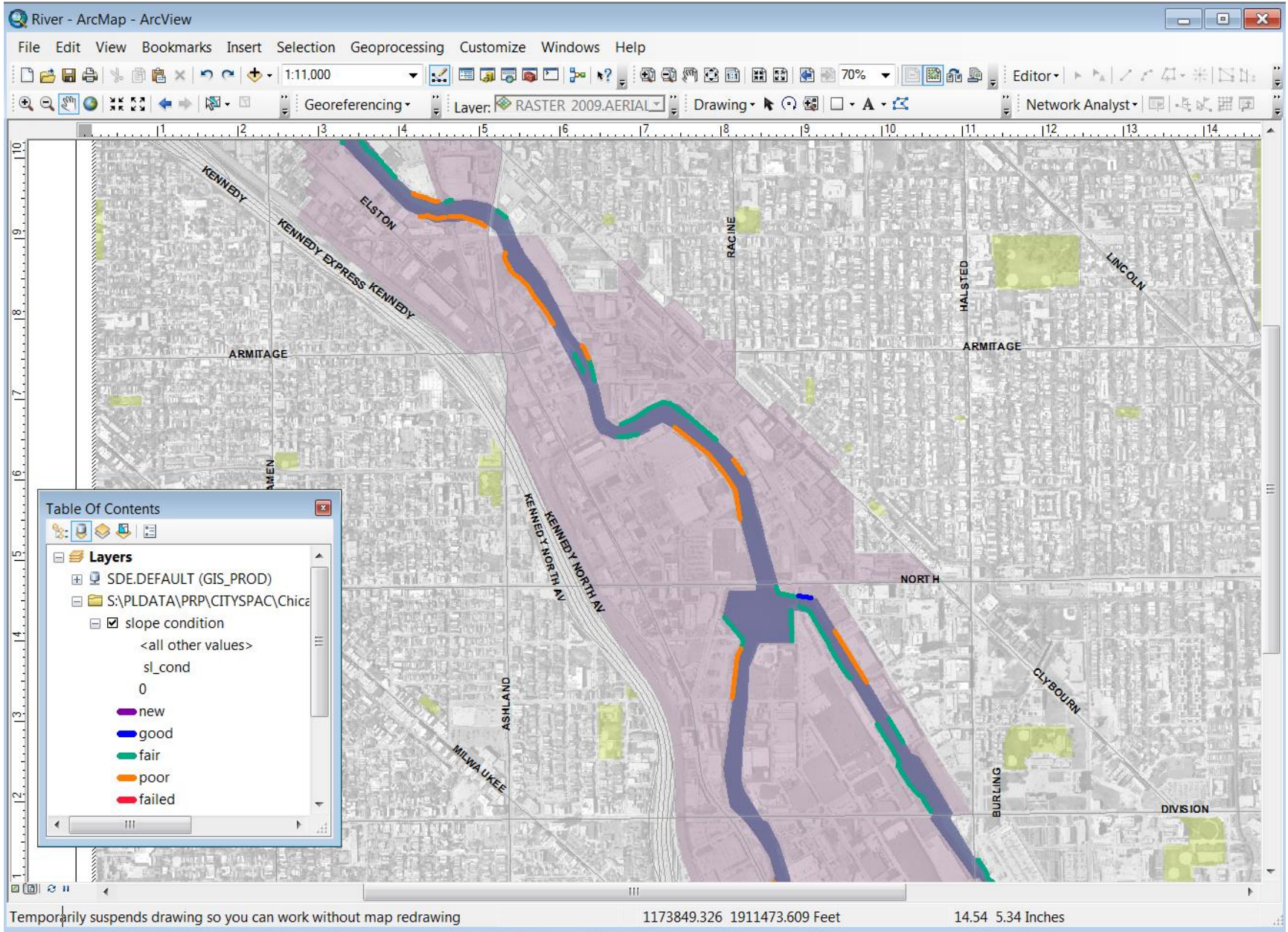
Riverbank type (seawall or slope riverbank condition)



Riverbank slope angle (percent)



Riverbank slope condition



Temporarily suspends drawing so you can work without map redrawing

1173849.326 1911473.609 Feet

14.54 5.34 Inches

The Nature Conservancy's Chicago Greenprint
<http://bit.ly/ChicagoGreenprint>