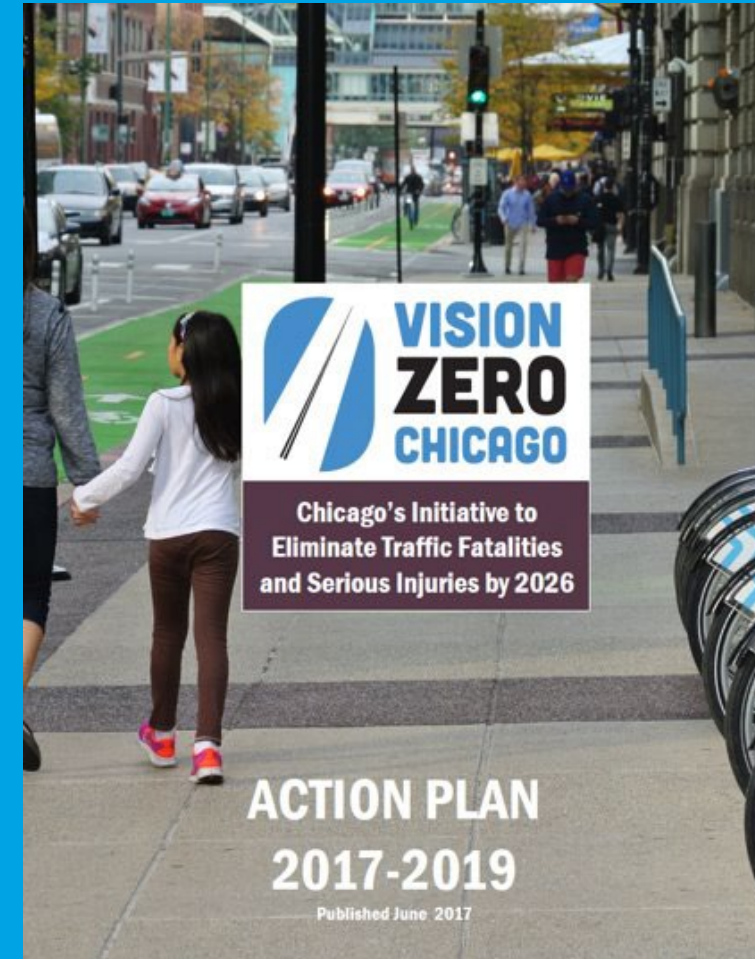


Belmont (Kimball-Western)

Project Overview – Complete Streets Improvements and Resurfacing

Complete Streets....

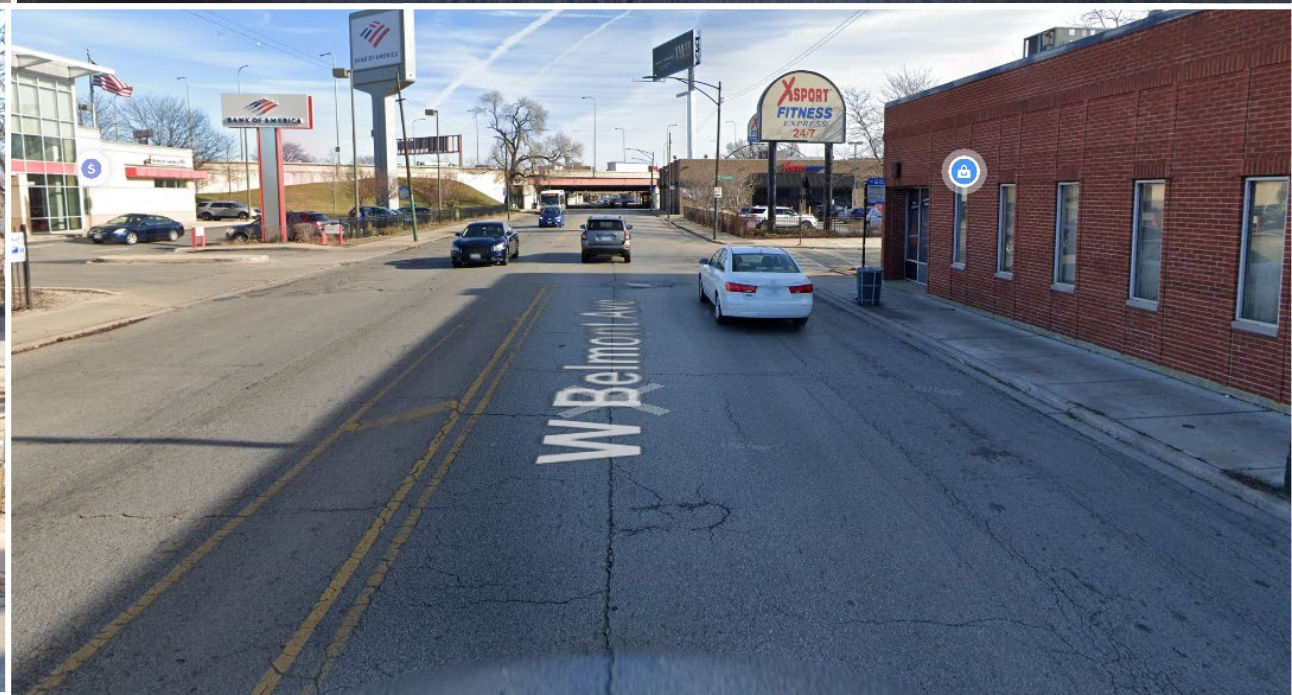
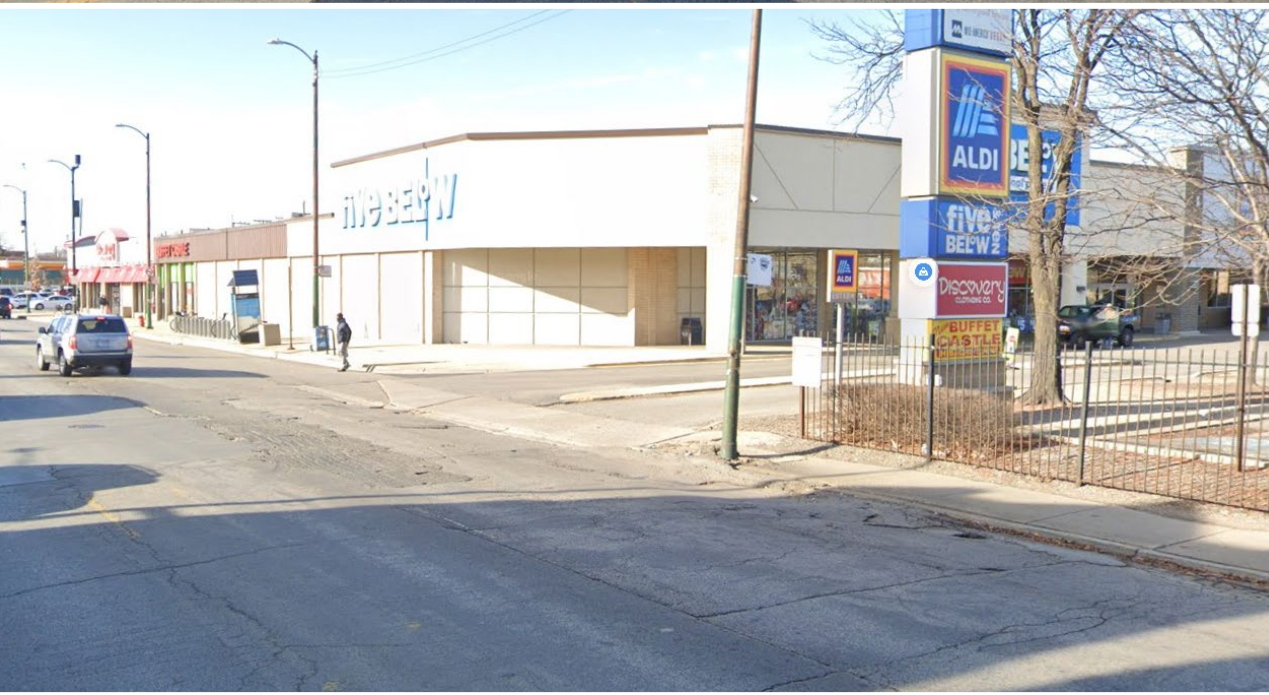
Balance and accommodate the safety and accessibility of all users regardless of your age, ability, or mode of transportation



Belmont will include...

A design that prioritizes & balances the needs of people walking, biking, and riding the bus throughout the day.

- ▶ **Right-sized travel lanes**
with full time parking lanes to encourage safer vehicle speeds
- ▶ **Curb extensions**
to shorten pedestrian crossings & improve visibility
- ▶ **Protected bike lanes**
providing east-west connection over the Chicago River to connect multiple bike routes
- ▶ **Bus bulbs and in-lane stops**
to reduce dwell times and eliminate time lost merging in and out of traffic
- ▶ **Bus priority treatments**
approaching major signalized intersections to improve bus speed and reliability
- ▶ **A 24-hour design**
benefitting people walking, biking, and riding the bus throughout the day





Travel lanes are wide and unmarked

- ▶ Top speeds over 70 MPH (during the day)
- ▶ Speed camera near Milwaukee & Belmont
- ▶ 17% of all injury crashes are speed related (likely underreported)
- ▶ Speed a factor in 28% of all bike injury crashes

Pedestrian crossings are wide and uncontrolled

- ▶ **2/3** of all crossings are uncontrolled
- ▶ **2/3** of uncontrolled crossings are unmarked
- ▶ **Half** of all uncontrolled crossings are wider than 50'
- ▶ **All** crossings east of Kimball wider than 50'
- ▶ **Most** pedestrian crashes occur outside of signalized intersections

A major barrier in the bike network

- ▶ No bike facilities exist on Belmont
- ▶ Multiple bikeways end at Belmont with no accommodation to cross the River
- ▶ 30% of people riding on sidewalk over Chicago River
- ▶ There is no east/west bikeway over the Chicago River between Lawrence and Cortland (3.6 miles)

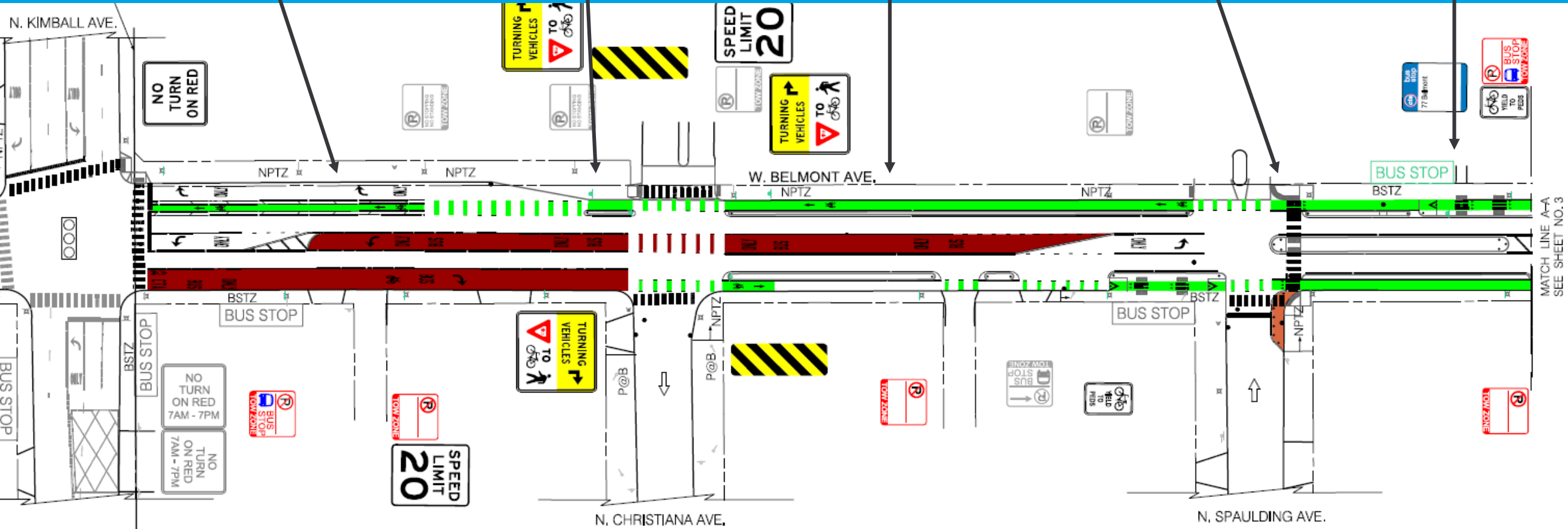
Bus Lane to CTA Station

Sidewalk Improvement

Curb-Protected Bike Lane

New Pedestrian Island

Floating Bus Stop

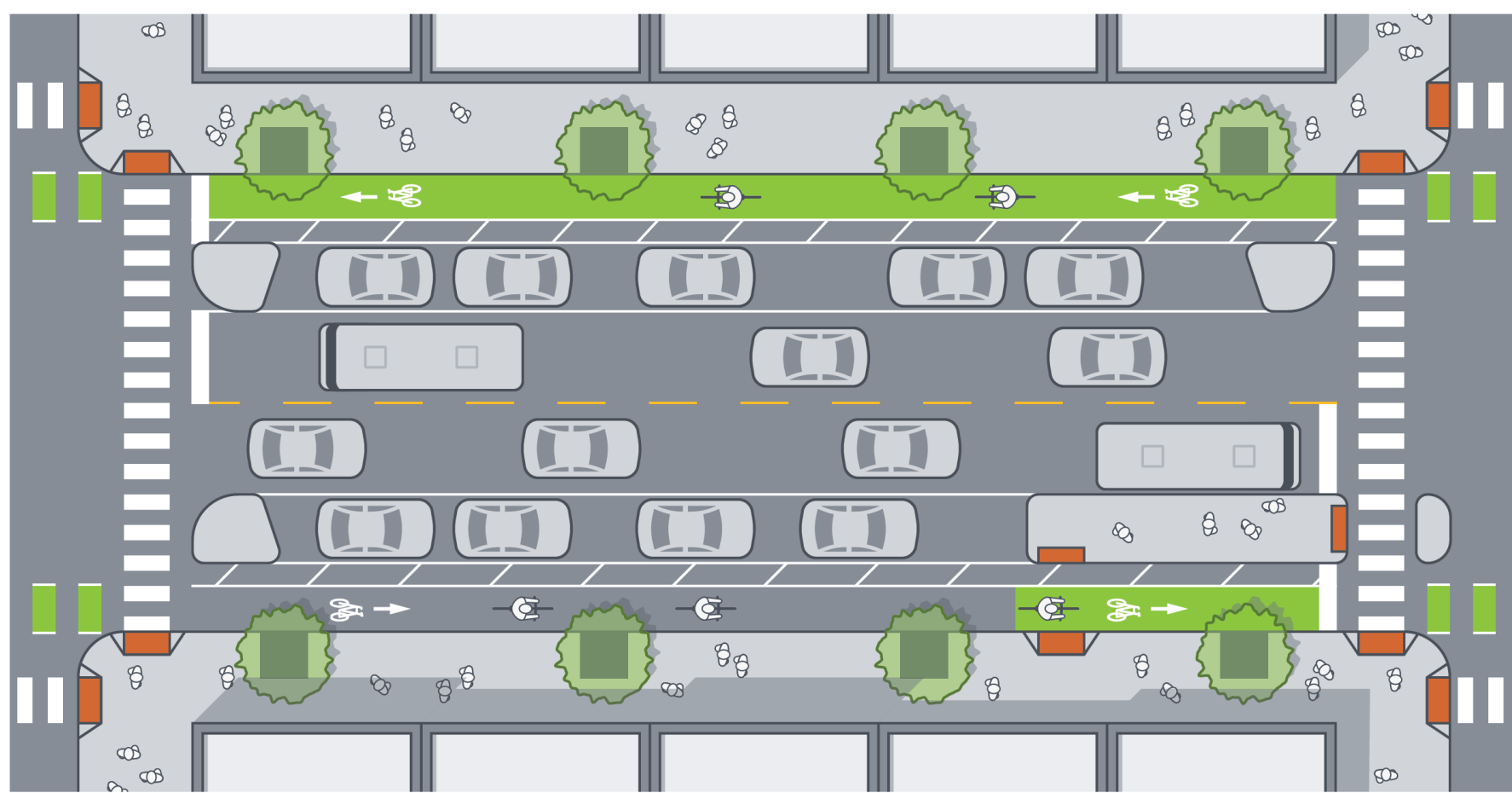


MATCH LINE A-A
SEE SHEET NO. 3

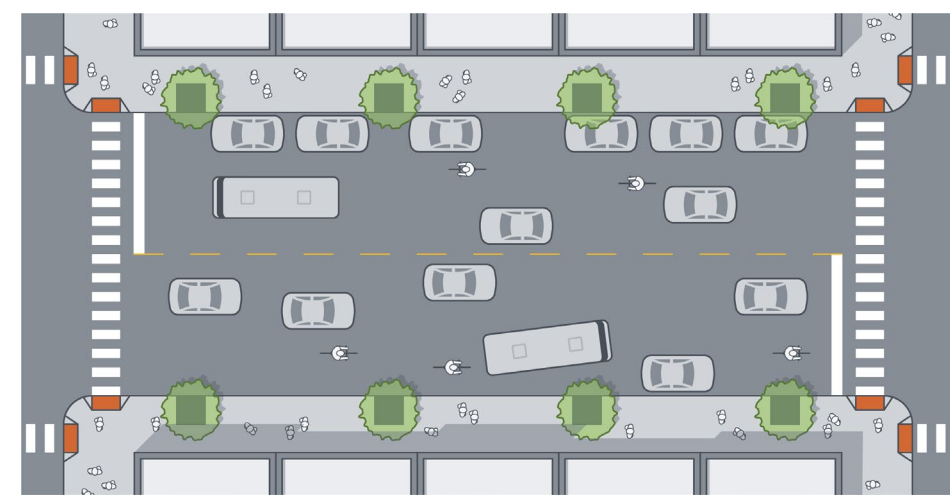
DRAFT CONCEPT



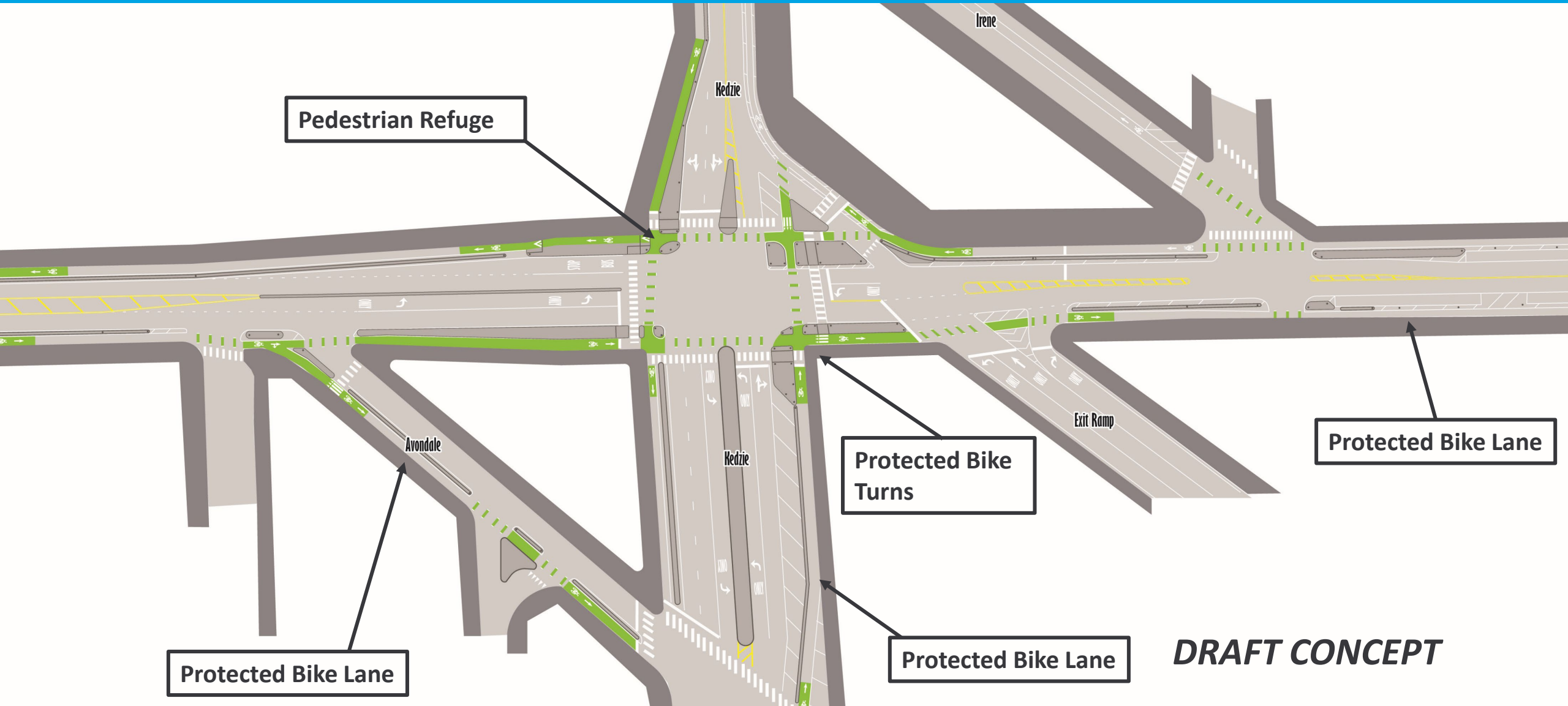
Concept – Kedzie to Campbell



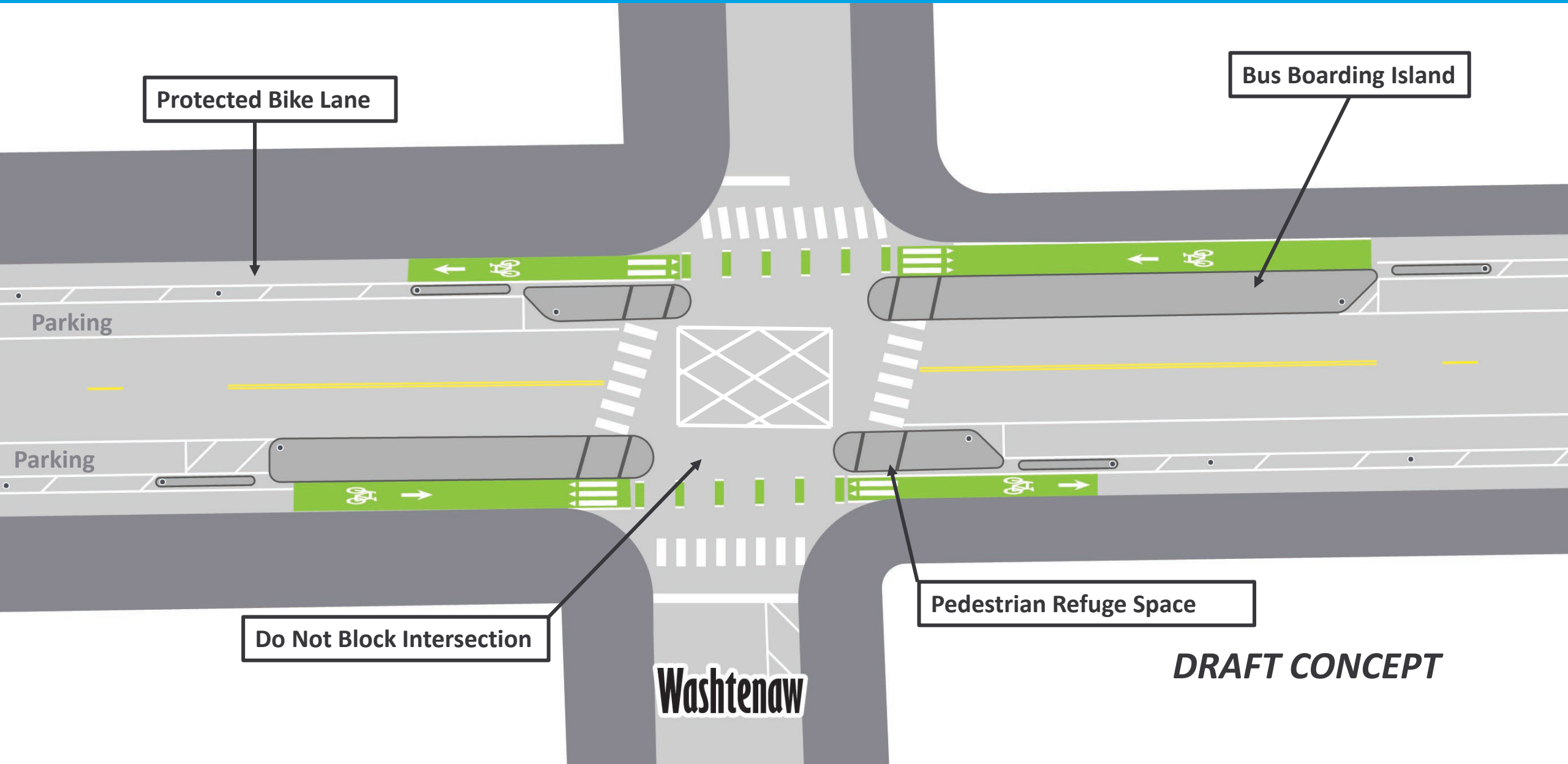
Existing Condition



Belmont and Kedzie



Belmont and Washtenaw



DRAFT CONCEPT

Belmont and Rockwell

