

**PROTECT**  
**CHICAGO** ★

**PROTEGE A**  
**CHICAGO** ★

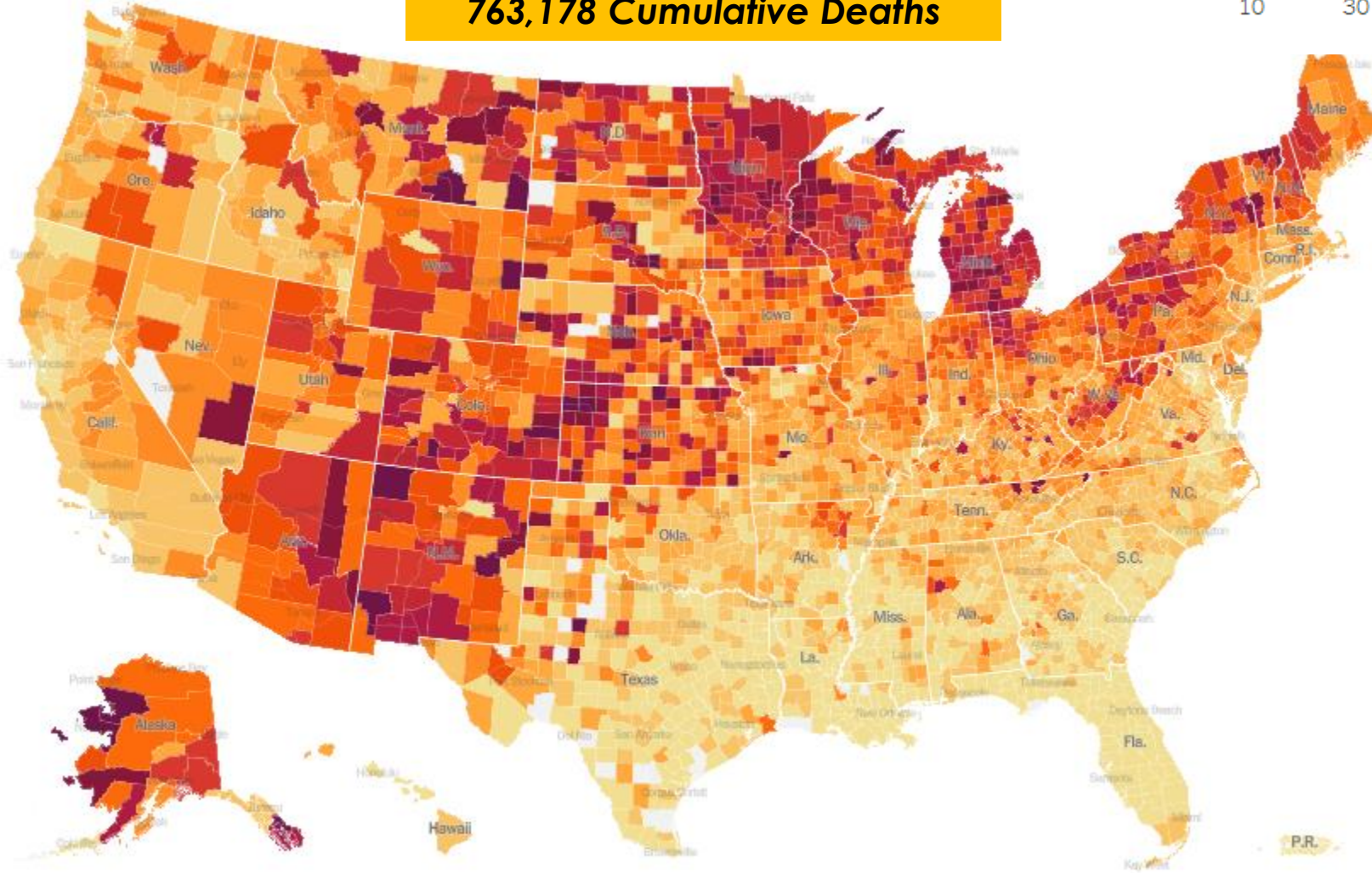
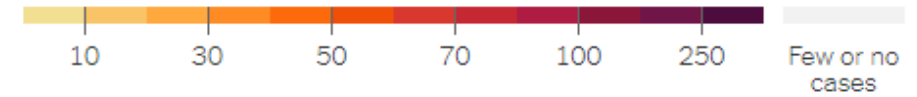


# Average daily COVID-19 cases per 100,000 population



**47 Million Cumulative Cases**  
**763,178 Cumulative Deaths**

Average daily cases per 100,000 people in past week

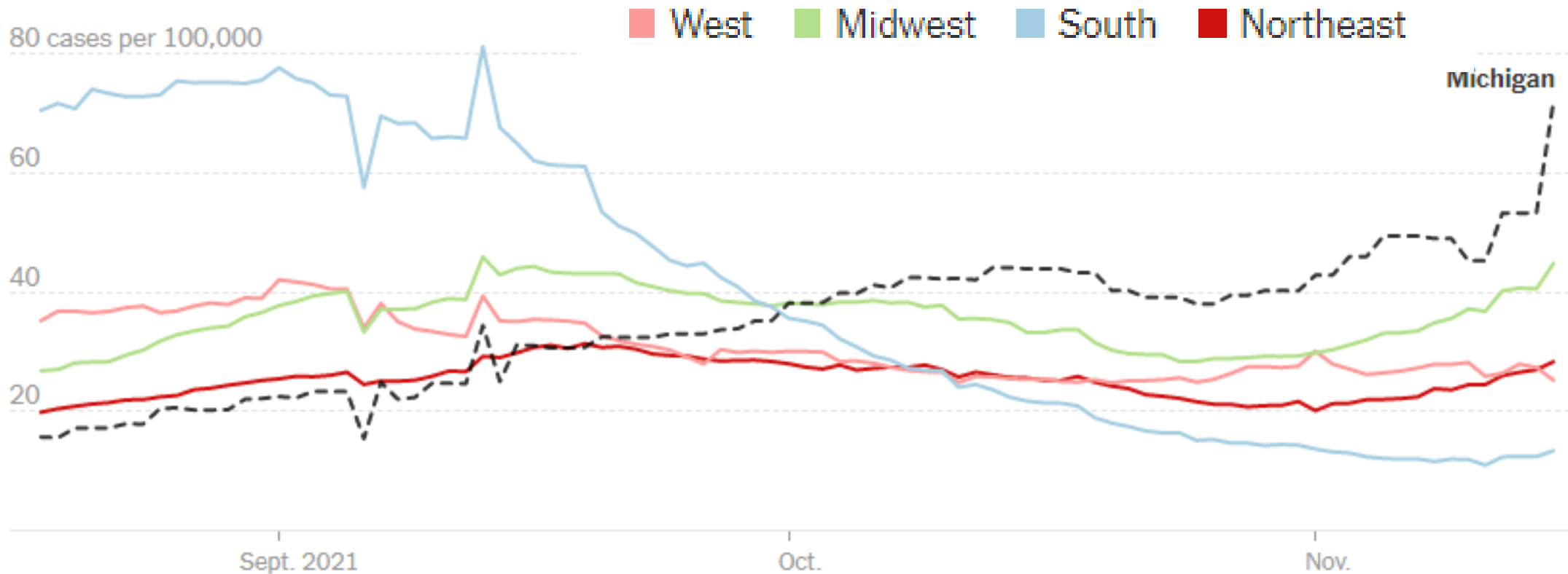


**National currently:**  
**26** diagnosed daily cases per 100,000 people

**Chicago currently:**  
**16** diagnosed daily cases per 100,000 people



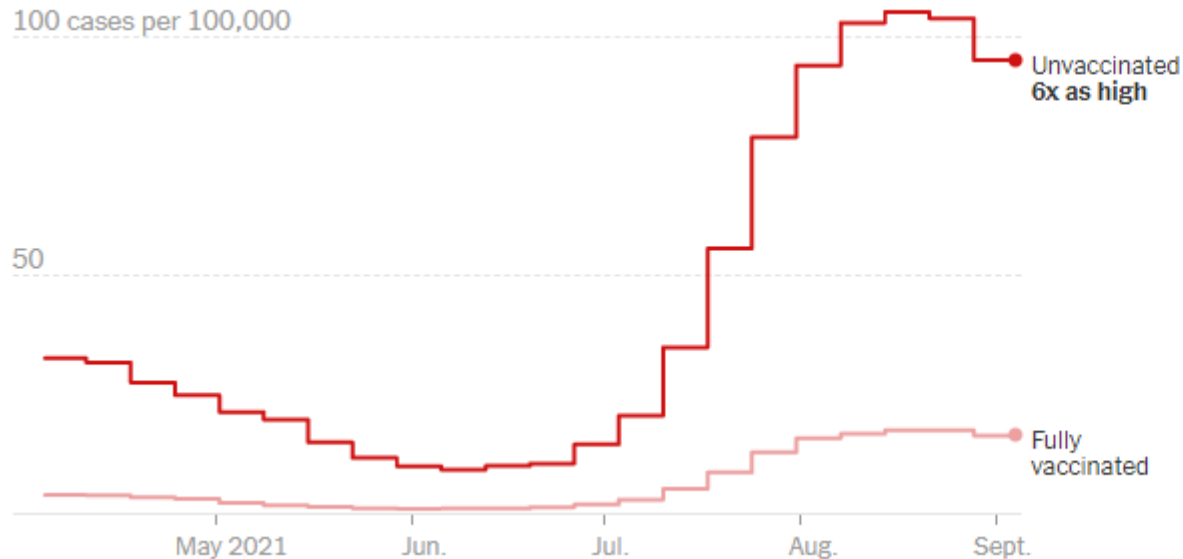
The **Midwest** is seeing the highest average daily COVID case rate and all Midwest states continue to increase. Michigan and Minnesota have the highest case rates per population in the country.





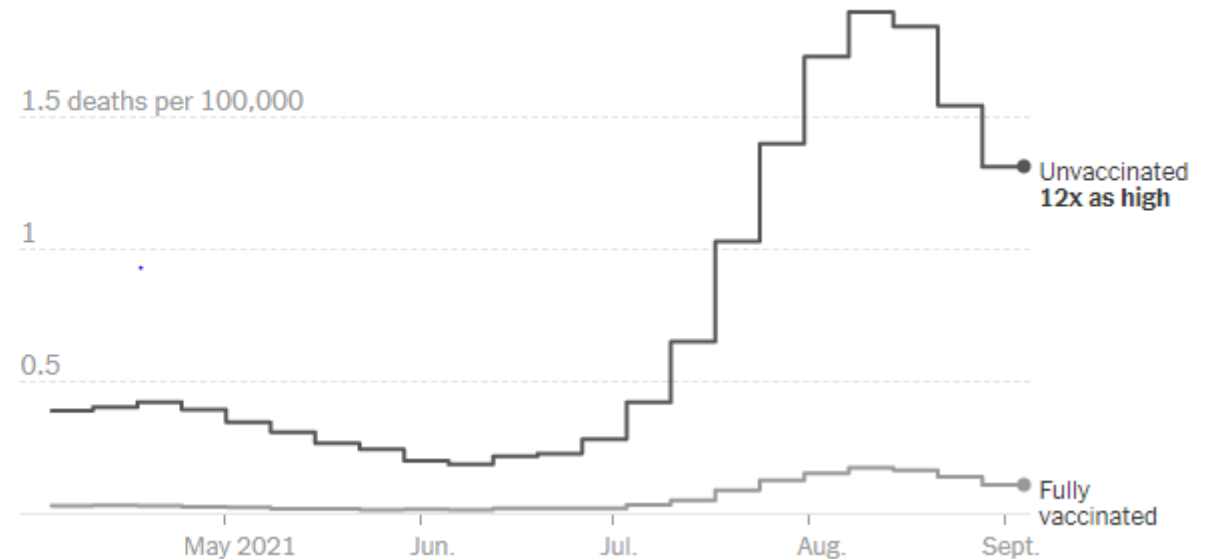
## U.S.: Average Daily Cases

6x as high in unvaccinated individuals versus fully vaccinated



## U.S.: Average Daily Deaths

12x as high in unvaccinated individuals versus fully vaccinated



# Chicago COVID-19 Community Transmission and Risk Matrix

	VERY HIGH TRANSMISSION	HIGH TRANSMISSION	SUBSTANTIAL TRANSMISSION	LOWER TRANSMISSION	LOW TRANSMISSION
<b>COVID-19 CASES DIAGNOSED PER DAY</b> Chicago residents - 7-day rolling daily average	800+	<b>400 - 799</b> <b>Current: 445</b> Increasing	200 - 399	20 - 199	<20
<b>COVID-19 TEST POSITIVITY</b> Chicago residents - 7-day rolling daily average	10%+	6.6 - 9.9%	5.0 - 6.5%	<b>2 - 4.9%</b> <b>Current: 2.5%</b> Increasing	<2%
<b>HOSPITAL BEDS (NON-ICU) OCCUPIED BY COVID PATIENTS</b> Chicago hospitals - 7-day rolling daily average	1250+	750 - 1249	250 - 749	<b>100 - 249</b> <b>Current: 235</b> Increasing	<100
<b>ICU BEDS OCCUPIED BY COVID PATIENTS</b> Chicago hospitals - 7-day rolling daily average	400+	300 - 399	100 - 299	<b>20 - 99</b> <b>Current: 60</b> Stable	<20

Source: Chicago Department of Public Health, data current as of November 16, 2021. These metrics represent general community COVID transmission and should not be applied to individual settings that have mitigation practices in place.

# Chicago: New COVID cases are increasing, Chicago is now in **high transmission** category (400-799/day)

Nov 10, 2020: **3,356** diagnosed cases



Current average:  
445 cases/day

# Chicago: COVID test positivity continues to increase with colder weather here

April 9, 2020: 30.0% positivity

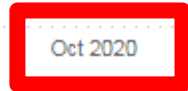


November 11, 2020: 15.9% positivity

Current positivity: 2.5%

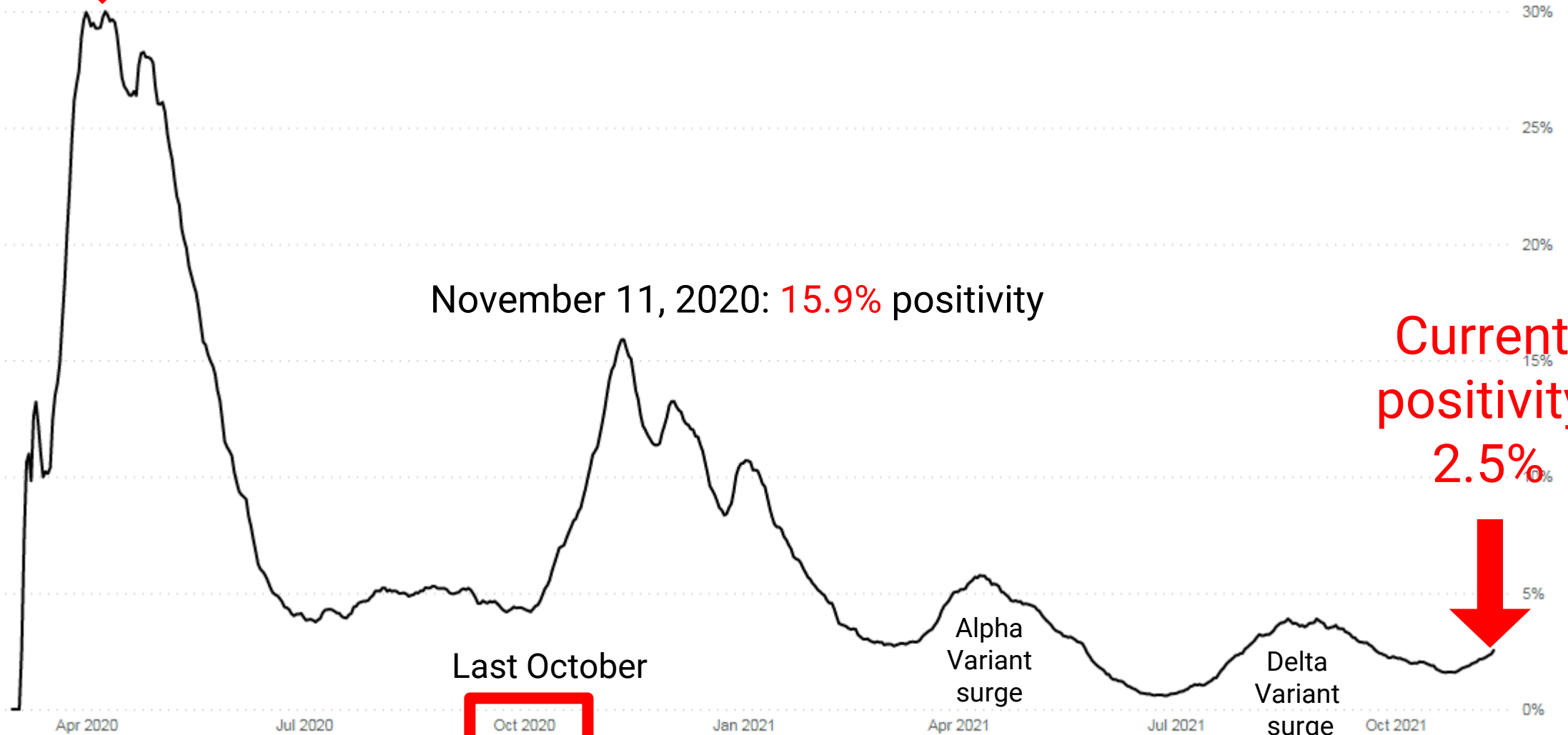


Last October



Alpha Variant surge

Delta Variant surge

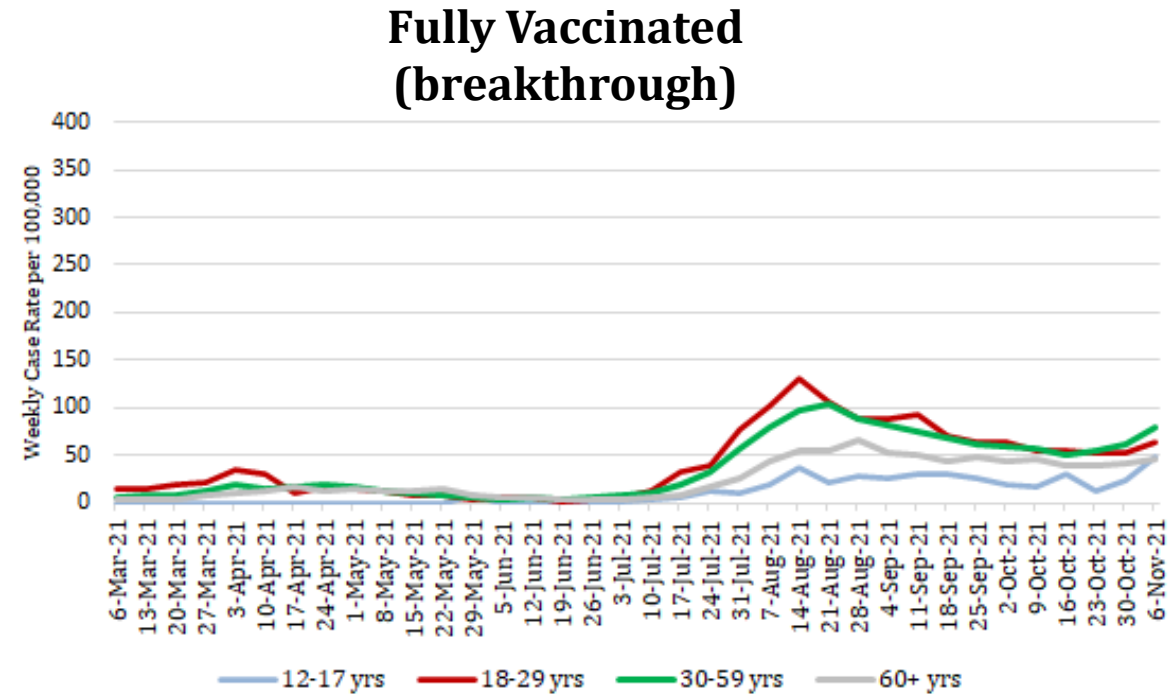
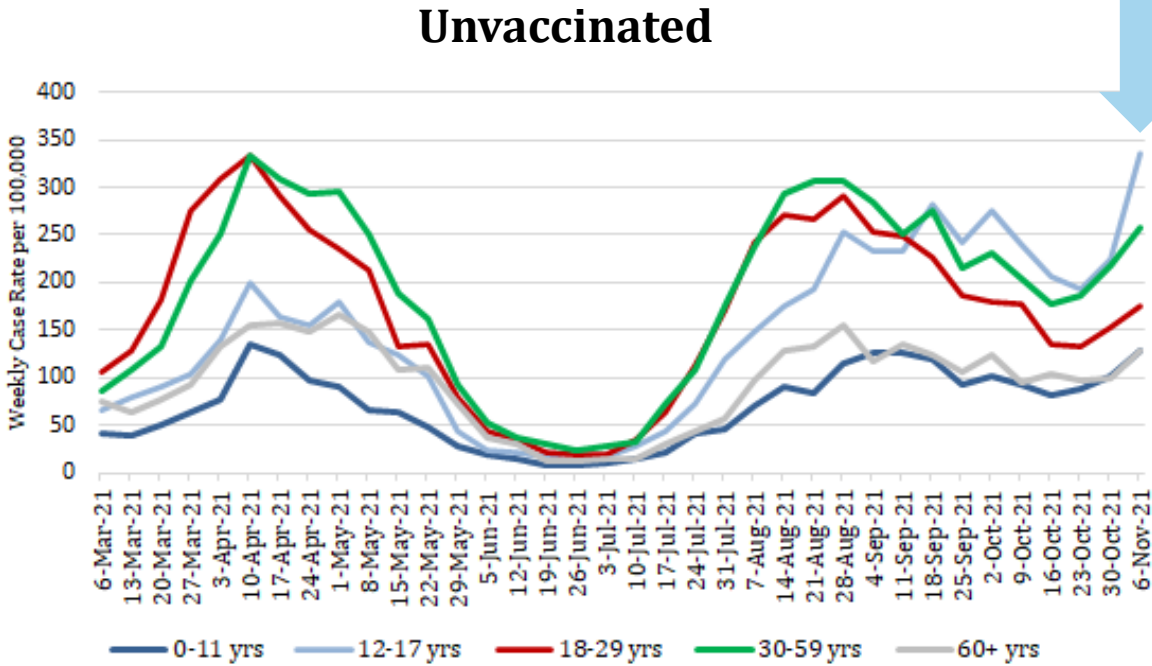




# Unvaccinated Chicagoans continue to drive our COVID outbreak



Highest case rate in Chicago now in *unvaccinated* 12-17 y/o



**Weekly COVID Case Rate per 100,000 by Age Category** Includes cases among Chicago residents reported into the Illinois Electronic Disease Surveillance System (I-NEDSS) with date of specimen collection 2/28/2021-11/6/2021, pulled 11/10/2021. Vaccination status obtained from the Illinois Comprehensive Automated Immunization Registry (I-CARE) registry. Fully vaccinated defined as completion of vaccine series at least 14 days prior to a positive test (with no other positive tests in the previous 45 days). Rate for vaccinated calculated as total cases divided by cumulative vaccinated at the end of each week, multiplied by 100,000. Rate for unvaccinated calculated as total cases divided by total population minus cumulative vaccinated at the end of each week, multiplied by 100,000.

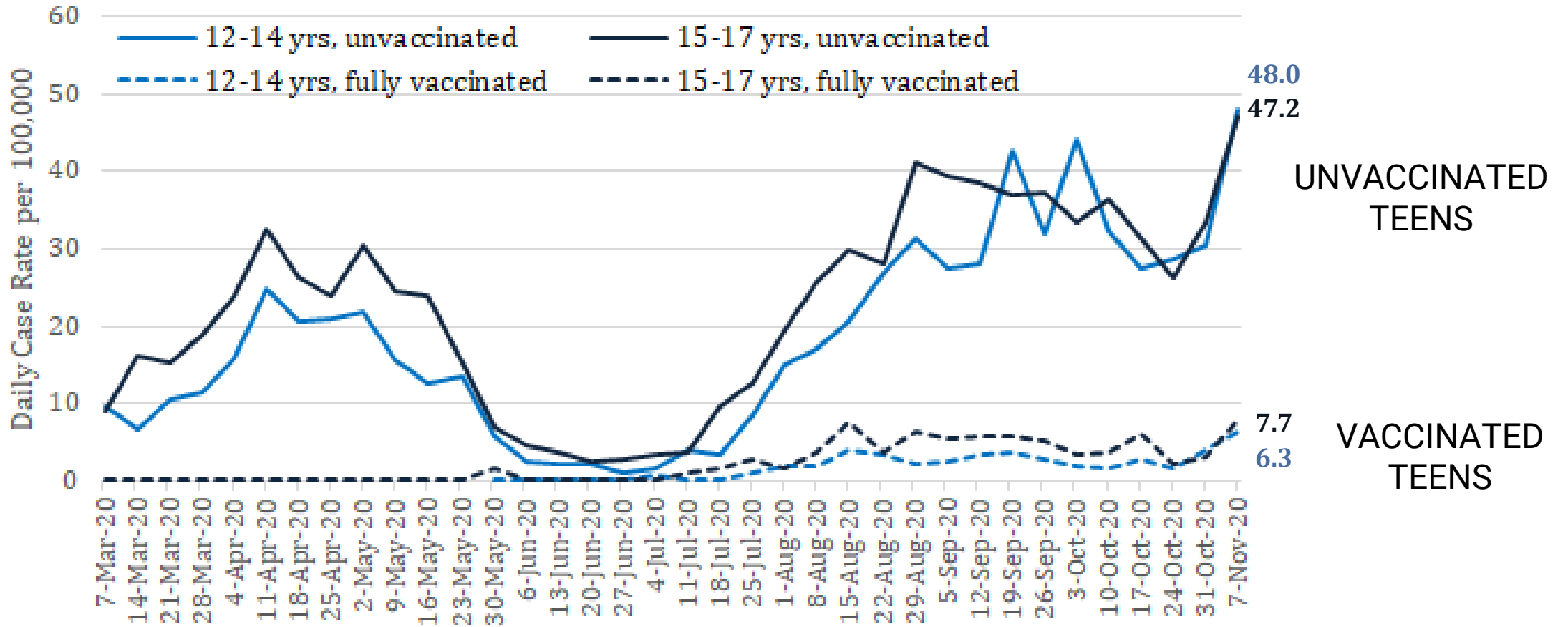
## ★ Cases in children (unvaccinated) are on the rise

In the last 30 days, **1 in 4** Chicago COVID cases have been in children under age 18.

Over the whole pandemic, only **1 in 8** Chicago COVID cases have been in children.



# Chicago COVID case rates are **7X** higher in unvaccinated 15-17 year olds and **over 10X** higher in unvaccinated 12-14 year olds compared to their fully vaccinated counterparts during the Delta surge



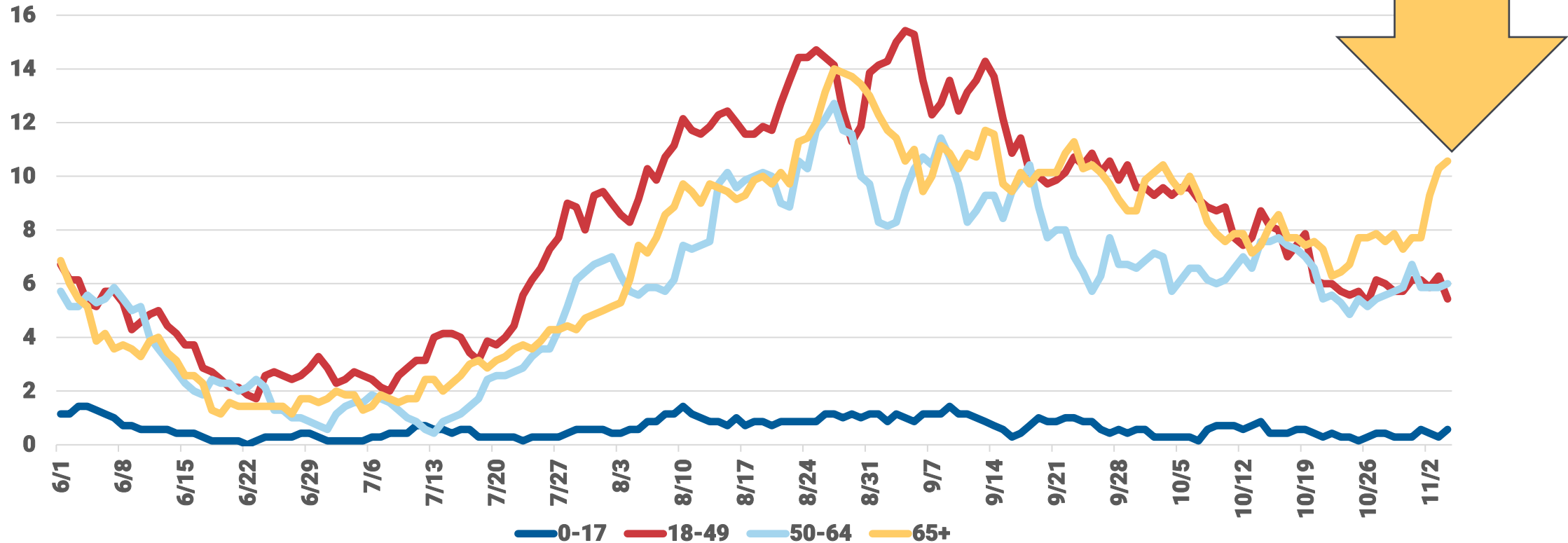
**Notes:**

Includes cases among Chicago residents reported into the Illinois Electronic Disease Surveillance System (I-NEDSS) with date of specimen collection 2/28/2021-11/6/2021, pulled 11/10/2021. Rate calculated using the U.S. Census Bureau's American Community Survey 2019 1-year estimates for non-institutional population of children age 0-17 residing in Chicago, IL.

# Chicago: Sharp increase in age 65+ COVID hospital admissions since 11/1/21



COVID-19 Hospital admits, on Admission Date, by Age Group, rolling 7-day average, from 6/1/2021

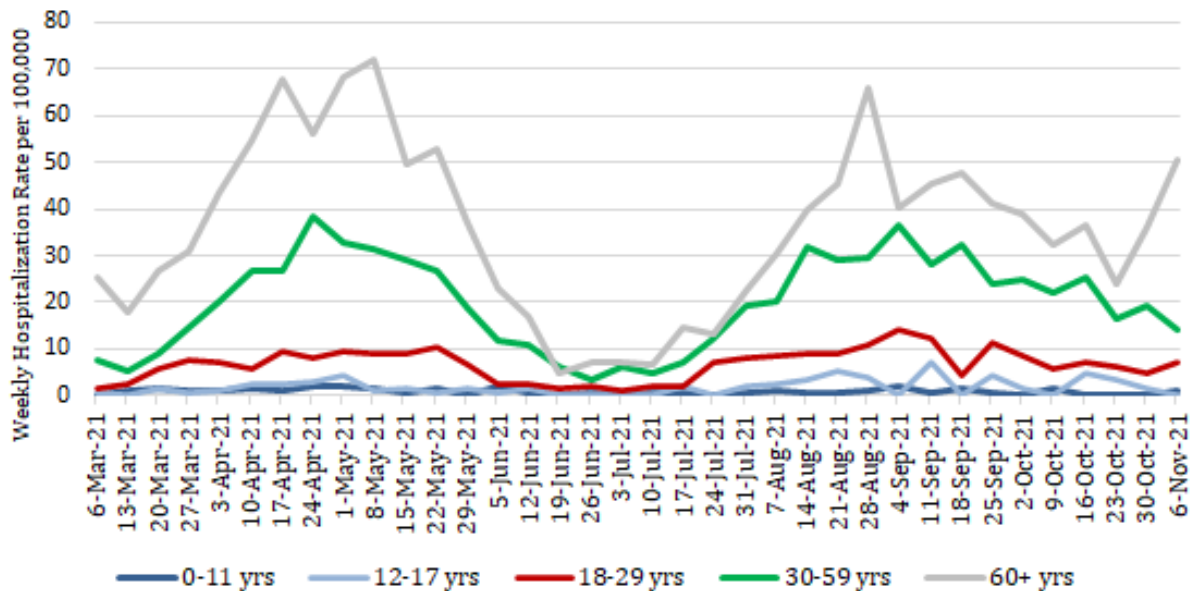


# Older (60y+) unvaccinated Chicagoans *by far* most likely to be hospitalized with COVID

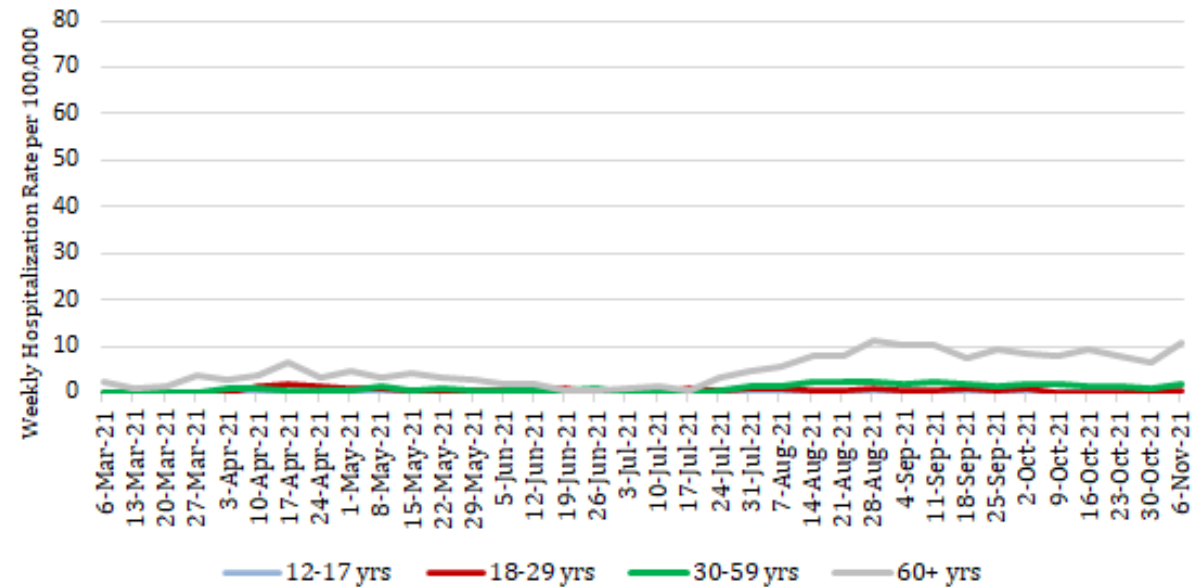
Breakthrough hospitalizations remain rare but seen most often in age 60y+



### Unvaccinated



### Fully Vaccinated (breakthrough)



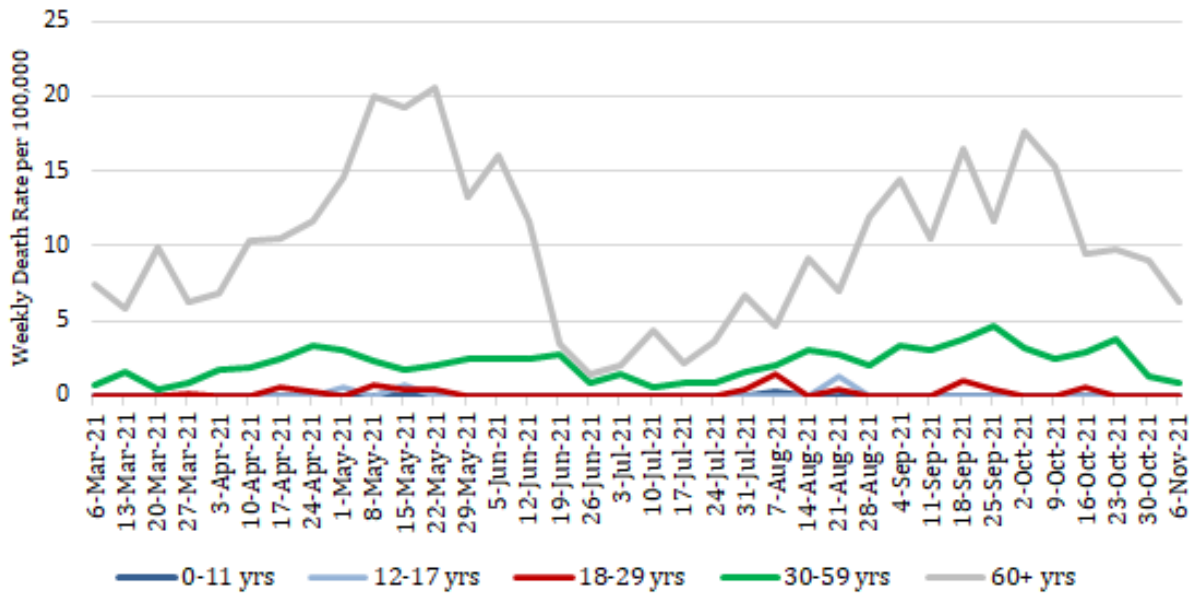
Weekly Hospitalization Rate per 100,000 by Age Category. Includes cases among Chicago residents reported into the Illinois Electronic Disease Surveillance System (I-NEDSS) with date of hospital admission 2/28/2021-11/6/2021, pulled 11/10/2021. Vaccination status obtained from the Illinois Comprehensive Automated Immunization Registry (I-CARE) registry. Fully vaccinated defined as completion of vaccine series at least 14 days prior to a positive test (with no other positive tests in the previous 45 days). Rate for vaccinated calculated as total hospitalized cases divided by cumulative vaccinated at the end of each week, multiplied by 100,000. Rate for unvaccinated calculated as total hospitalized cases divided by total population minus cumulative vaccinated at the end of each week, multiplied by 100,000.



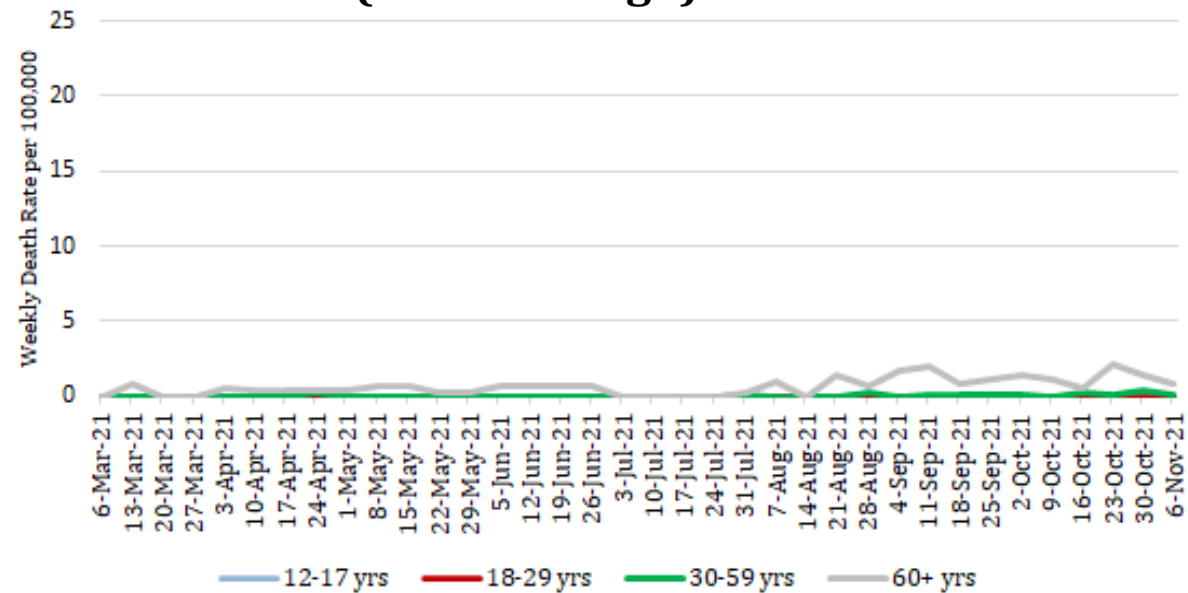
# Older (60y+) unvaccinated Chicagoans remain *by far* the most likely to die from COVID-18

Breakthrough deaths remain very rare (seen occasionally in age 60y+)

### Unvaccinated



### Fully Vaccinated (breakthrough)



#### Notes:

Includes cases among Chicago residents reported into the Illinois Electronic Disease Surveillance System (I-NEDSS) with date of death 2/28/2021-11/6/2021, pulled 11/10/2021. Vaccination status obtained from the Illinois Comprehensive Automated Immunization Registry (I-CARE) registry. Fully vaccinated defined as completion of vaccine series at least 14 days prior to a positive test (with no other positive tests in the previous 45 days). Rate for vaccinated calculated as total case deaths divided by cumulative vaccinated at the end of each week, multiplied by 100,000. Rate for unvaccinated calculated as total case deaths divided by total population minus cumulative vaccinated at the end of each week, multiplied by 100,000.



# Percent of fully vaccinated population\* that has received a booster dose. Note only 1/3 of eligible 65y+ have gotten a booster.

	United States	Chicago
Population ≥ 18 years	14.4%	14.9%
Population ≥ 50 years	22.1%	22.8%
Population ≥ 65 years	32.4%	33.9%

\*Not all may be eligible to receive a booster dose

Data as of 11/10/2021. The count of people who received a booster dose includes anyone who is fully vaccinated and has received another dose of COVID-19 vaccine since August 13, 2021. This includes people who received booster doses and people who received additional doses.

United State source: [https://covid.cdc.gov/covid-data-tracker/#vaccinations\\_vacc-people-additional-dose-totalpop](https://covid.cdc.gov/covid-data-tracker/#vaccinations_vacc-people-additional-dose-totalpop). Accessed 11/11/2021



# Breakthrough Cases: Vaccines Continue to Work VERY Well

- 98.9% of fully vaccinated Chicagoans have **not** tested positive for COVID-19
- 99.97% have **not** been hospitalized for COVID-19
  - Median age of breakthrough hospitalizations in Chicago is 67 years
- 99.994% have **not** died due to COVID-19
  - Median age of breakthrough deaths in Chicago is 77 years; nearly half are immunocompromised (#1 diagnosis: active cancer treatment)



■ ★ **New Vaccine Milestone for Chicago**

More than **3.5 million**

safe

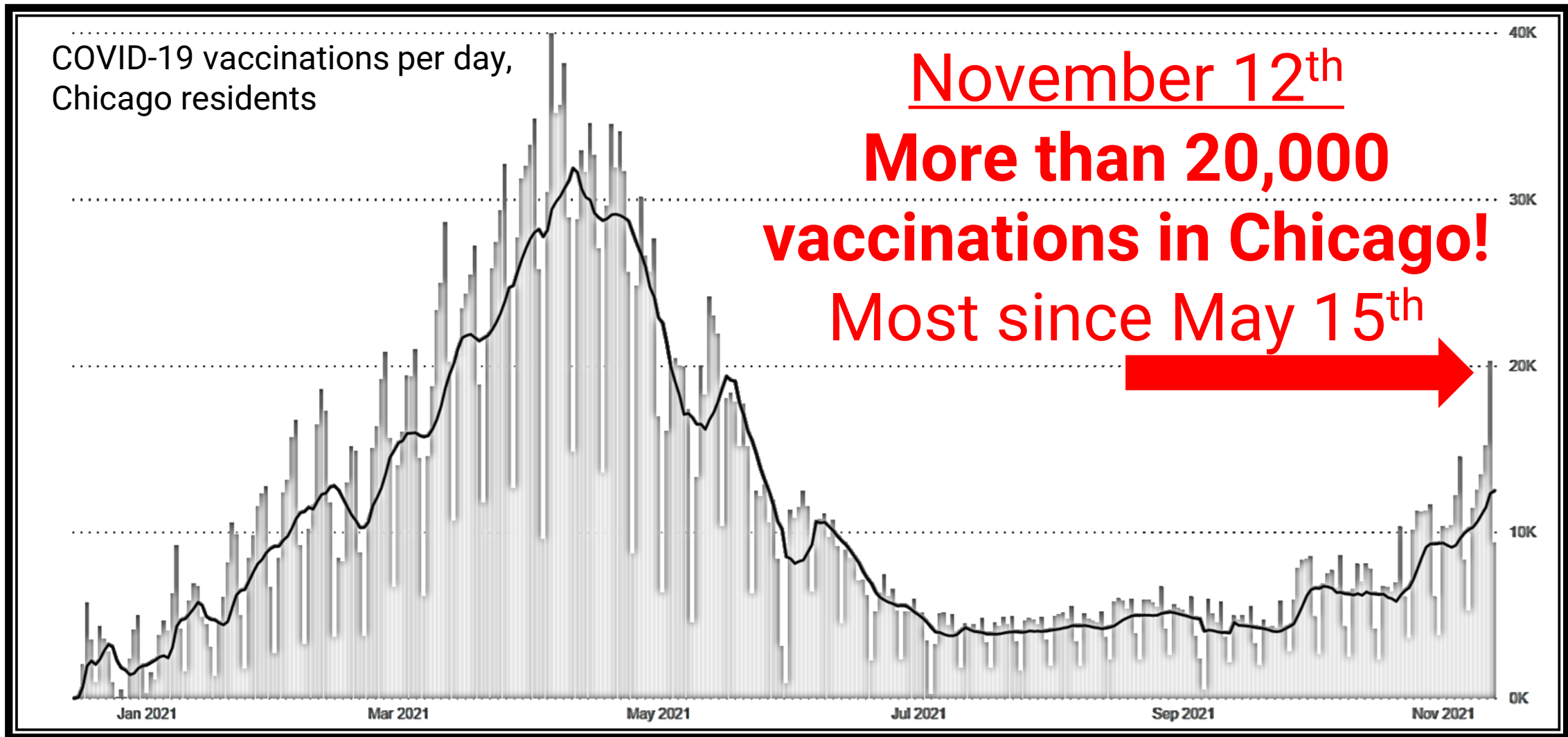
effective

free

COVID vaccinations

have been administered to Chicago residents

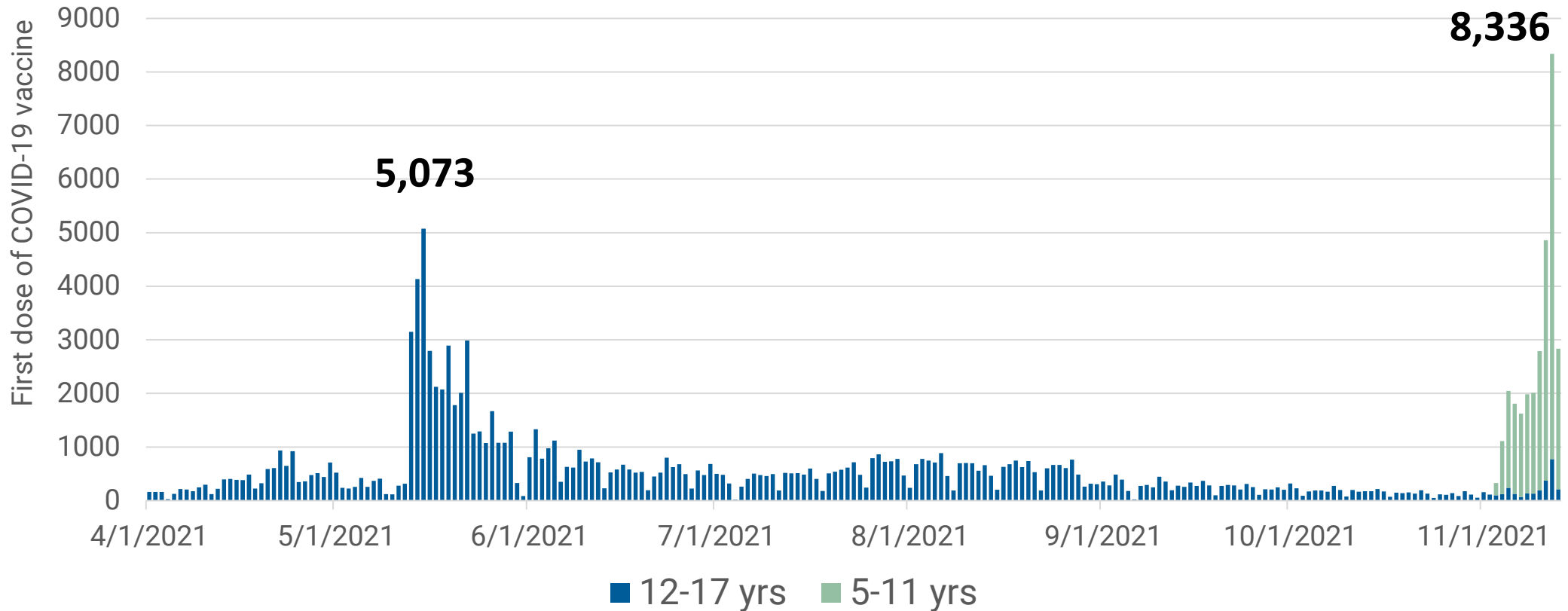
# Last Friday, Vaccine Awareness Day (Protect Your Health on the 12<sup>th</sup>) broke a six-month vaccination record for Chicago!





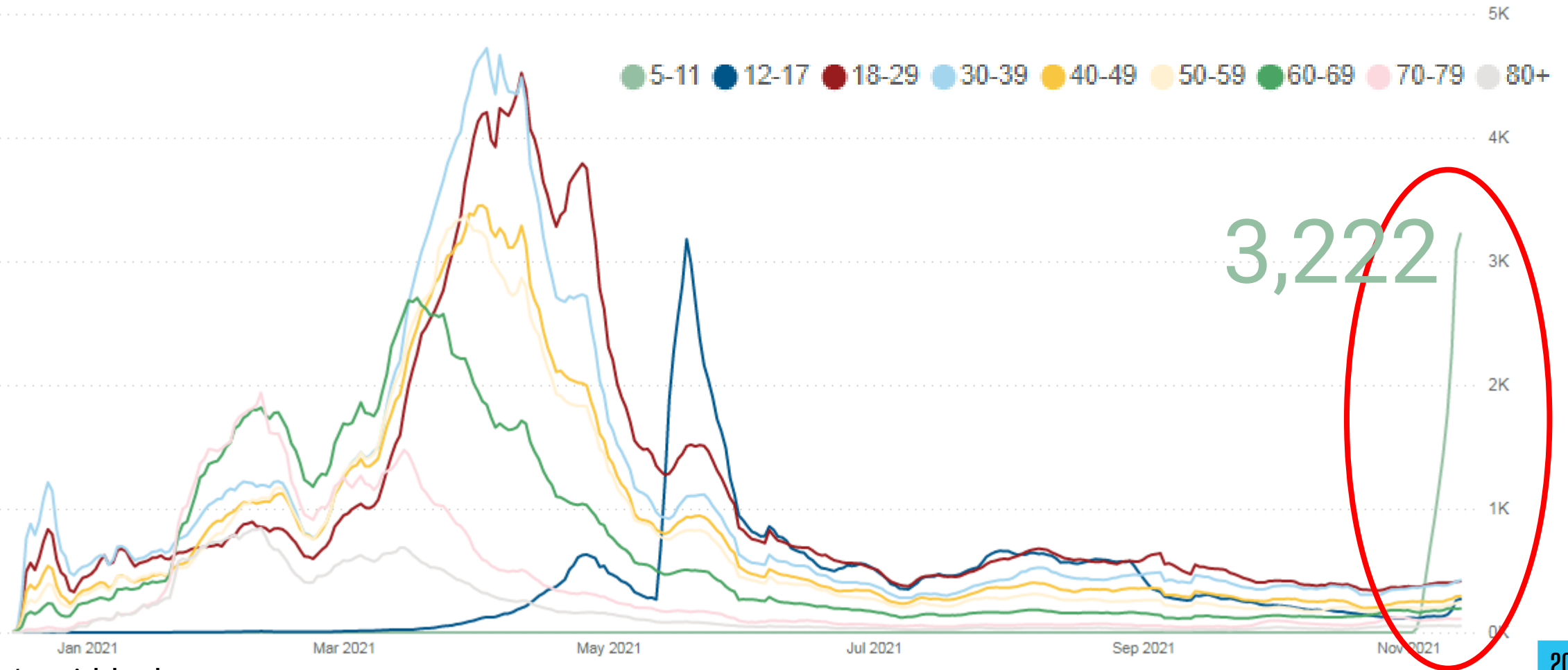
# AND over 8,300 first doses of COVID-19 vaccine given to children on 11/12/21 – Chicago’s single largest day for youth COVID-19 vaccination to date!

*(Also the largest number of first doses given to 12-17-year-olds on any day since 8/6/2021)*



Data reported to I-CARE as of 11/14/2021. 1,623 doses of COVID-19 vaccine given to children 12-17 years prior to 4/1/2021 are not displayed on this chart.

# Very steep increase in 1<sup>st</sup> dose uptake for 5-11 year-olds; exceeding early vaccine uptake in other age groups

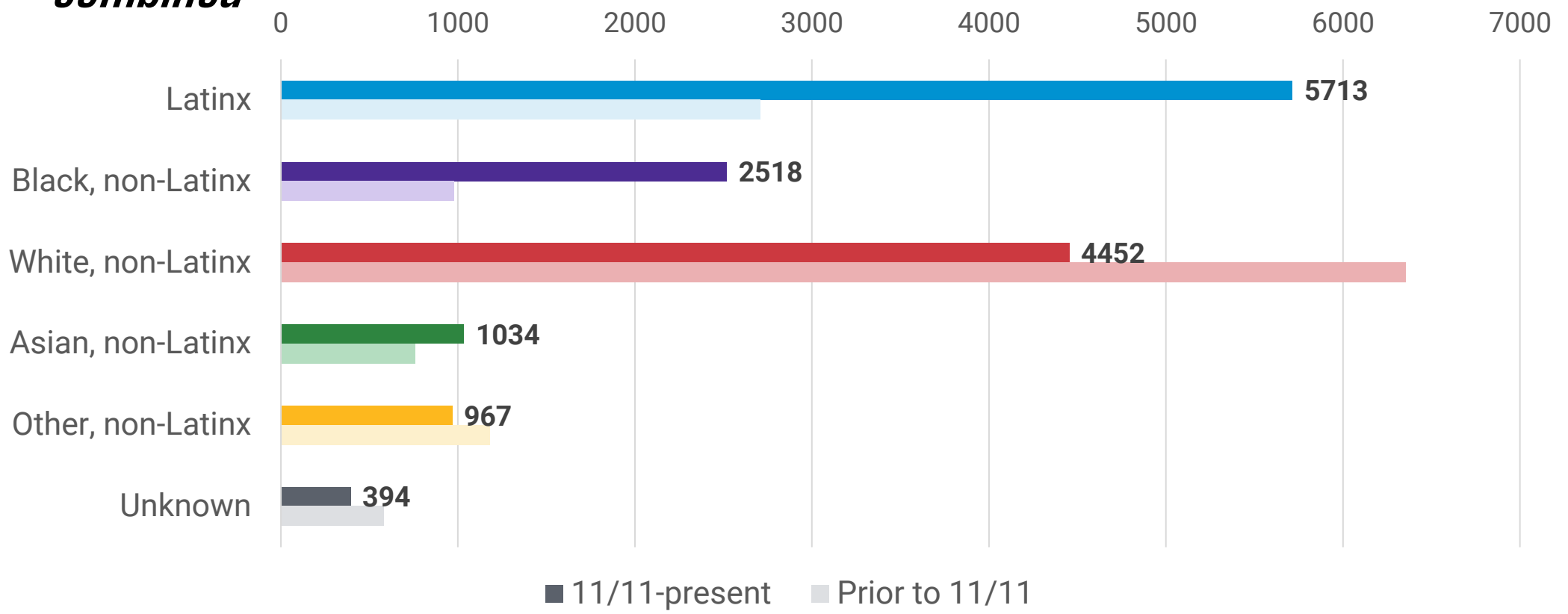


3,222

# Last weekend also saw large (and needed) vaccination increases in youngest (5-11y) Black and Latinx Chicagoans



More than twice as many Latinx and Black-non-Latinx 5-11 y/o Chicagoans vaccinated just last Thursday-Saturday as in the first 8 days of eligibility *combined*



Data reported to I-CARE as of 11/14/2021. Darker colors represent doses given from 11/11/2021-11/14/2021. Lighter colors represent doses given prior to 11/11/2021.

First vaccine doses to **White** Chicagoans

**96%** increase compared to prior week

First doses to **Latinx** Chicagoans

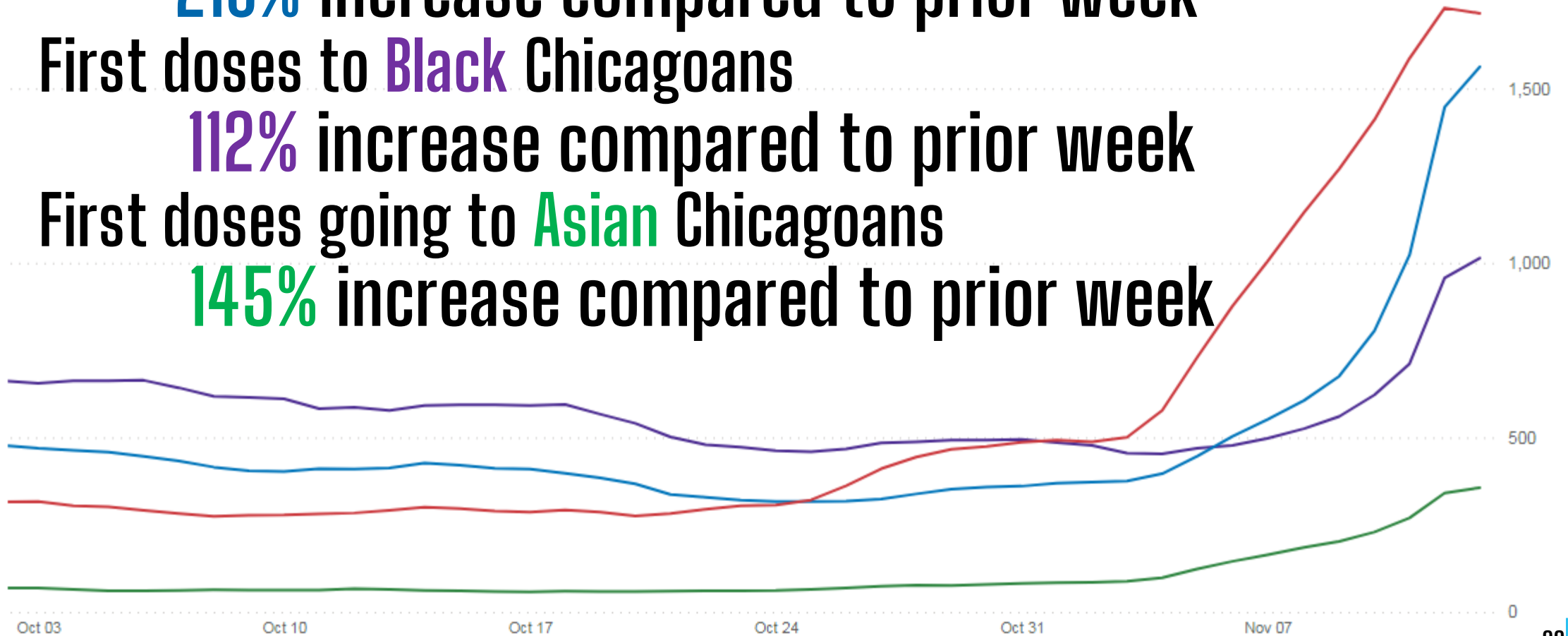
**210%** increase compared to prior week

First doses to **Black** Chicagoans

**112%** increase compared to prior week

First doses going to **Asian** Chicagoans

**145%** increase compared to prior week

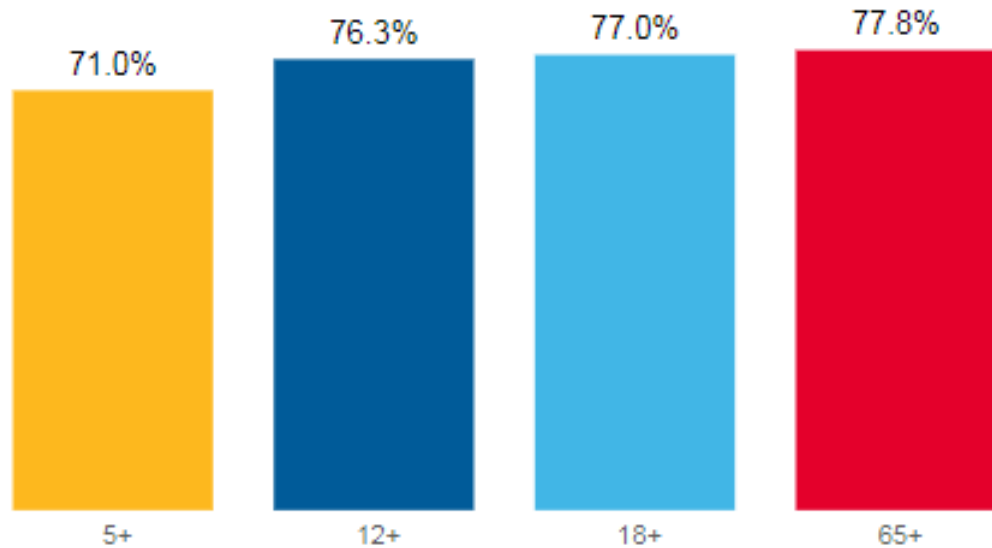


Chi.gov/coiddash. 1<sup>st</sup> dose COVID vaccinations by race/ethnicity, average daily increase as of 11/13 compared to prior week

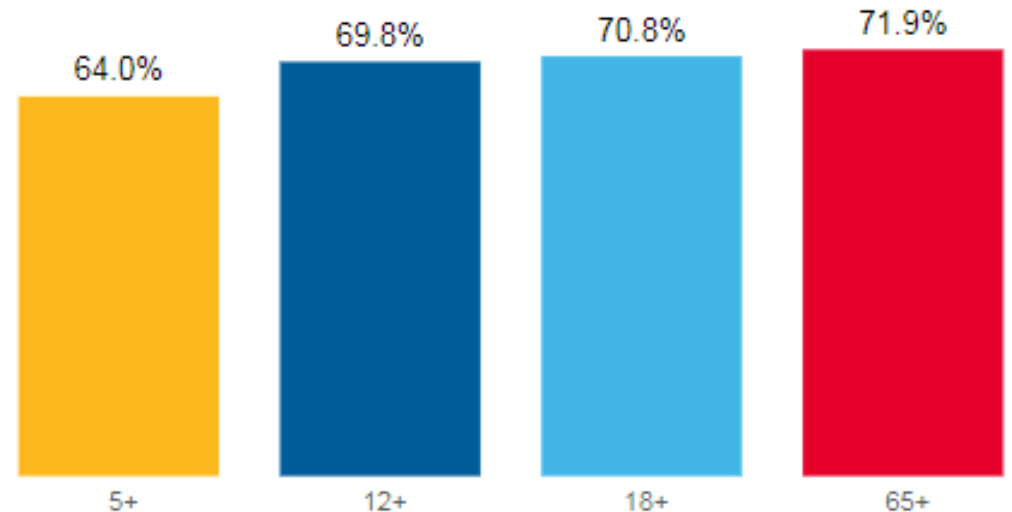


# Chicago's COVID Dashboard now includes vaccination rates for City's population 5+

At least one dose (% vaccinated as of 11/14/2021)



Completed vaccine series (% vaccinated as of 11/14/2021)

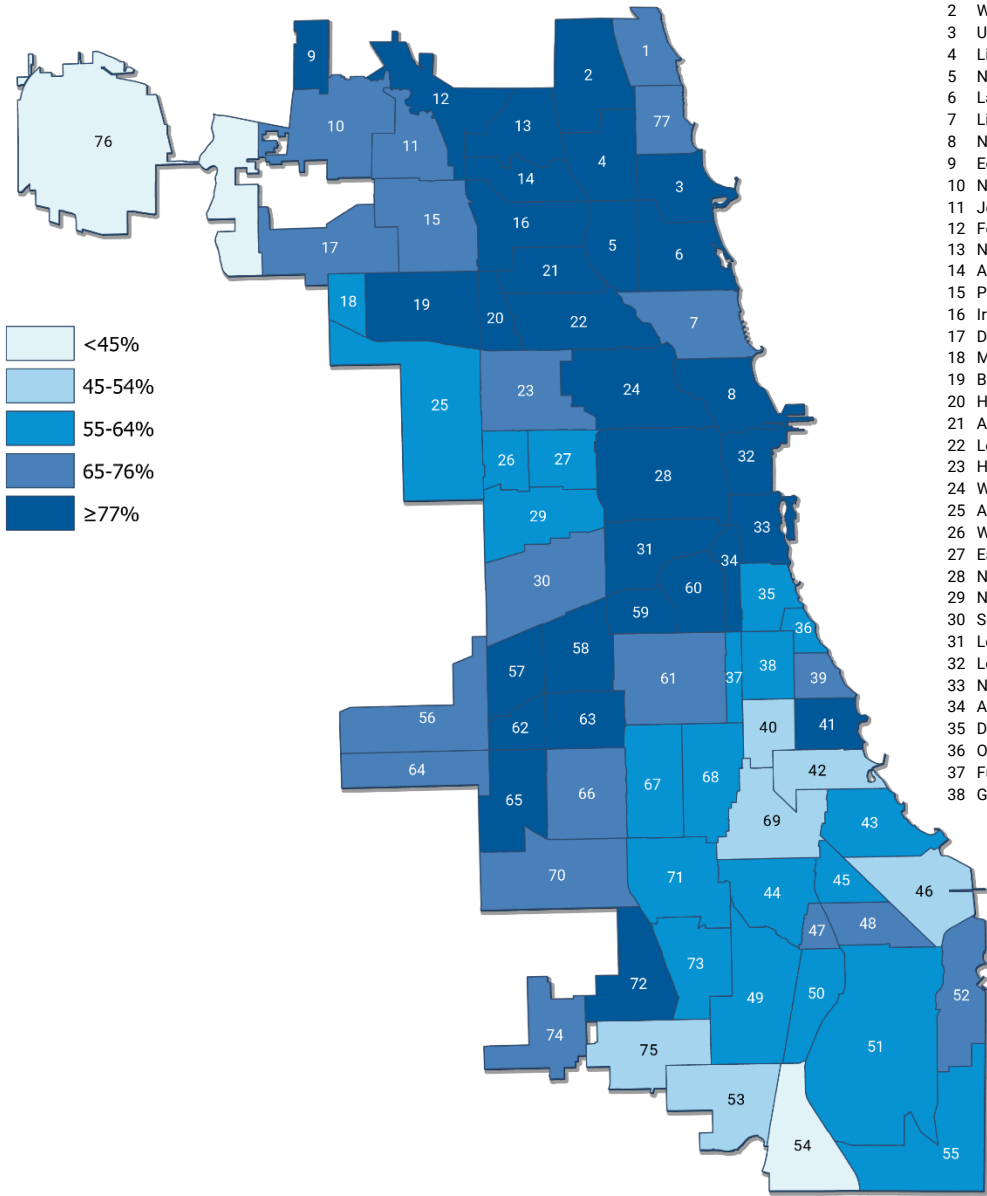
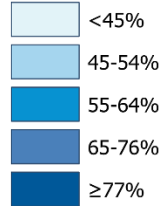


built by  
slalom



# Percent of residents 12+ years-old with **at least one dose of COVID-19 vaccine** by community area

**Citywide:**  
**76.3%**



- Community Areas:**
- |                       |                           |
|-----------------------|---------------------------|
| 1 Rogers Park         | 39 Kenwood                |
| 2 West Ridge          | 40 Washington Park        |
| 3 Uptown              | 41 Hyde Park              |
| 4 Lincoln Square      | 42 Woodlawn               |
| 5 North Center        | 43 South Shore            |
| 6 Lake View           | 44 Chatham                |
| 7 Lincoln Park        | 45 Avalon Park            |
| 8 Near North Side     | 46 South Chicago          |
| 9 Edison Park         | 47 Burnside               |
| 10 Norwood Park       | 48 Calumet Heights        |
| 11 Jefferson Park     | 49 Roseland               |
| 12 Forest Glen        | 50 Pullman                |
| 13 North Park         | 51 South Deering          |
| 14 Albany Park        | 52 East Side              |
| 15 Portage Park       | 53 West Pullman           |
| 16 Irving Park        | 54 Riverdale              |
| 17 Dunning            | 55 Hegewisch              |
| 18 Montclare          | 56 Garfield Ridge         |
| 19 Belmont Cragin     | 57 Archer Heights         |
| 20 Hermosa            | 58 Brighton Park          |
| 21 Avondale           | 59 McKinley Park          |
| 22 Logan Square       | 60 Bridgeport             |
| 23 Humboldt Park      | 61 New City               |
| 24 West Town          | 62 West Elsdon            |
| 25 Austin             | 63 Gage Park              |
| 26 West Garfield Park | 64 Clearing               |
| 27 East Garfield Park | 65 West Lawn              |
| 28 Near West Side     | 66 Chicago Lawn           |
| 29 North Lawndale     | 67 West Englewood         |
| 30 South Lawndale     | 68 Englewood              |
| 31 Lower West Side    | 69 Greater Grand Crossing |
| 32 Loop               | 70 Ashburn                |
| 33 Near South Side    | 71 Auburn Gresham         |
| 34 Armour Square      | 72 Beverly                |
| 35 Douglas            | 73 Washington Heights     |
| 36 Oakland            | 74 Mount Greenwood        |
| 37 Fuller Park        | 75 Morgan Park            |
| 38 Grand Boulevard    | 76 O'Hare                 |
|                       | 77 Edgewater              |

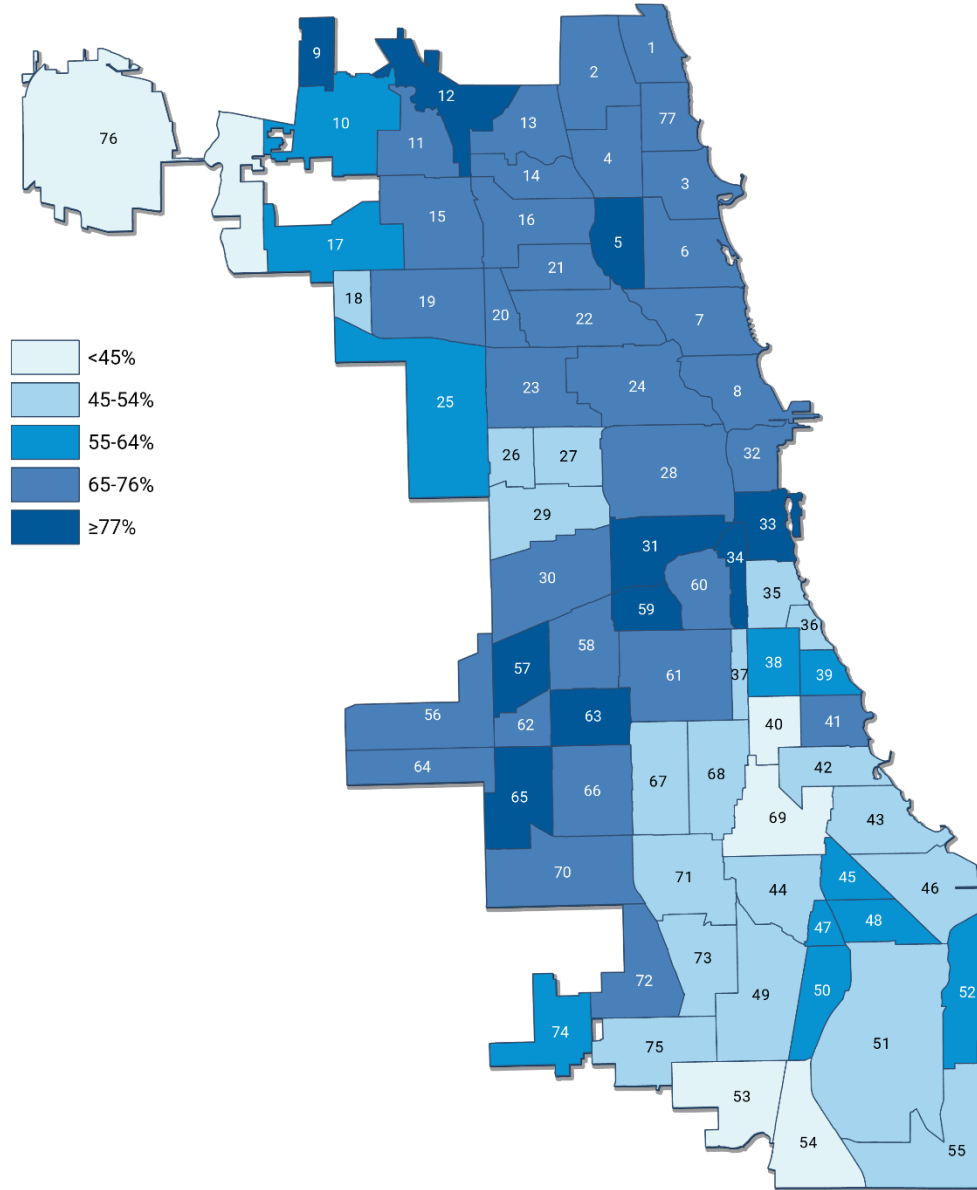
Data reported to the Illinois Comprehensive Automated Immunization Registry (I-CARE) through 11/6/2021. 2% of people with a first dose had an address that was unable to be geocoded and do not appear on this map.





# Percent of residents 12+ years-old with a completed COVID-19 vaccine series by community area

**Citywide: 69.8%**



## Community Areas:

- |                       |                           |
|-----------------------|---------------------------|
| 1 Rogers Park         | 39 Kenwood                |
| 2 West Ridge          | 40 Washington Park        |
| 3 Uptown              | 41 Hyde Park              |
| 4 Lincoln Square      | 42 Woodlawn               |
| 5 North Center        | 43 South Shore            |
| 6 Lake View           | 44 Chatham                |
| 7 Lincoln Park        | 45 Avalon Park            |
| 8 Near North Side     | 46 South Chicago          |
| 9 Edison Park         | 47 Burnside               |
| 10 Norwood Park       | 48 Calumet Heights        |
| 11 Jefferson Park     | 49 Roseland               |
| 12 Forest Glen        | 50 Pullman                |
| 13 North Park         | 51 South Deering          |
| 14 Albany Park        | 52 East Side              |
| 15 Portage Park       | 53 West Pullman           |
| 16 Irving Park        | 54 Riverdale              |
| 17 Dunning            | 55 Hegewisch              |
| 18 Montclare          | 56 Garfield Ridge         |
| 19 Belmont Cragin     | 57 Archer Heights         |
| 20 Hermosa            | 58 Brighton Park          |
| 21 Avondale           | 59 McKinley Park          |
| 22 Logan Square       | 60 Bridgeport             |
| 23 Humboldt Park      | 61 New City               |
| 24 West Town          | 62 West Elsdon            |
| 25 Austin             | 63 Gage Park              |
| 26 West Garfield Park | 64 Clearing               |
| 27 East Garfield Park | 65 West Lawn              |
| 28 Near West Side     | 66 Chicago Lawn           |
| 29 North Lawndale     | 67 West Englewood         |
| 30 South Lawndale     | 68 Englewood              |
| 31 Lower West Side    | 69 Greater Grand Crossing |
| 32 Loop               | 70 Ashburn                |
| 33 Near South Side    | 71 Auburn Gresham         |
| 34 Armour Square      | 72 Beverly                |
| 35 Douglas            | 73 Washington Heights     |
| 36 Oakland            | 74 Mount Greenwood        |
| 37 Fuller Park        | 75 Morgan Park            |
| 38 Grand Boulevard    | 76 O'Hare                 |
|                       | 77 Edgewater              |

Data reported to the Illinois Comprehensive Automated Immunization Registry (I-CARE) through 11/6/2021. 2% of people with a completed series had an address that was unable to be geocoded and do not appear on this map.



## **Other important reasons to vaccinate children (beyond protecting your family's health and getting Chicago past COVID!)**

**Children (and adults) who are fully vaccinated do NOT need to quarantine after a COVID exposure.**

**Children (and adults) who are fully vaccinated can travel without restrictions.**

# Get vaccinated *now* in time for the holidays:

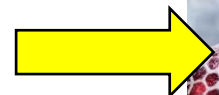


## Even one dose before Thanksgiving starts to build protection.

### Children need a first vaccine dose by this Saturday to be fully vaccinated by Christmas!

#### Deadlines for New Year's/ City employees:

Nov. 19 – 1<sup>st</sup> dose Moderna  
Nov. 26 – 1<sup>st</sup> dose Pfizer  
Dec. 17 – Single dose J&J



To be fully vaccinated against COVID-19 for  
**Christmas**  
(Dec. 25)  
START your vax series by

NOV. 13	1st Dose Moderna
NOV. 20	1st Dose Pfizer
DEC. 11	Single Dose J&J

CDPH

To be fully vaccinated against COVID-19 for  
**Kwanzaa**  
(Starts Dec. 26)  
START your vax series by

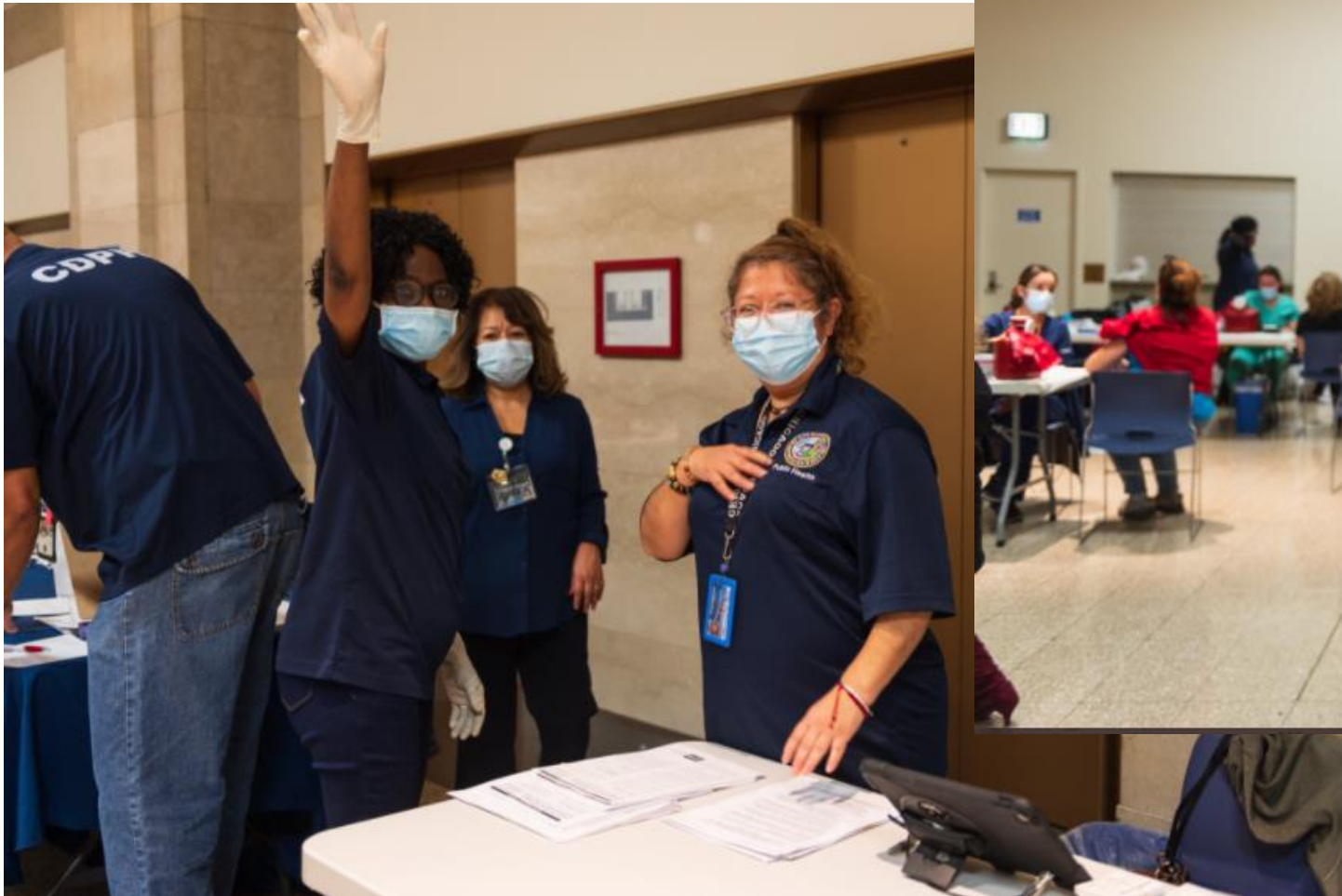
NOV. 14	1st Dose Moderna
NOV. 21	1st Dose Pfizer
DEC. 12	Single Dose J&J

CDPH

# City Hall employee clinic last week did >500 vaccinations! Public CDPH/City colleges last weekend did >730 vaccinations!



This Saturday: Kennedy King  
This Sunday : Olive Harvey





# Where to find vaccines!

## Chi.gov/covidvax

### 312-746-4835

Family health care  
providers

CPS and other  
school sites

Local pharmacies

Hospitals

Family vaccination  
clinics at City  
Colleges of  
Chicago

Protect Chicago At  
Home

Ongoing CDPH  
immunization  
clinics

Community events

Vaccines.gov

# CPS Students Vaccinated on Vaccination Awareness Day



**6,687**

CPS Students Vaccinated  
Friday 11/12

**12,966**

CPS Students Vaccinated  
Thursday 11/11 — Saturday 11/13

**5,849**

CPS Students Aged 5-11 Vaccinated  
Friday 11/12

**11,434**

CPS Students Aged 5-11 Vaccinated  
Thursday 11/11 — Saturday 11/13



**PROTECT**  
**CHICAGO** ★

**PROTEGE A**  
**CHICAGO** ★