



Protecting Chicago: Phase IV Re-Opening Metrics Update

April 29, 2021

(Data current through 4/28/2021)

Chicago COVID-19 Community Metrics, Phase IV, current status

	Risk/Trajectory as of 4/29/2021	Very high risk	High risk	Moderate risk	Lower risk	Controlled transmission
COVID cases diagnosed per day Chicago residents 7-day rolling daily average	HIGH DECLINING 524	800+ -or- 7+ consecutive days more than 15% higher than daily average one week prior	400 - 799 -or- 5+ consecutive days more than 10% higher than daily average one week prior	200 - 399 -and- decreasing or stable compared to daily average one week prior	20 - 199 -and- decreasing or stable compared to daily average one week prior	<20
COVID test positivity Chicago residents 7-day rolling daily average	LOWER DECLINING 4.7%	10%+ -or- 7+ consecutive days more than 15% higher than daily average one week prior	6.6 - 9.9% -or- 5+ consecutive days more than 10% higher than daily average one week prior	5.0 - 6.5% -and- decreasing or stable compared to daily average one week prior	2 - 4.9% -and- decreasing or stable compared to daily average one week prior	<2%
Emergency dept visits for COVID- like illness Chicago hospitals 7-day rolling daily average	VERY HIGH DECLINING 125	90+ -or- 7+ consecutive days more than 15% higher than daily average one week prior	80-89 -or- 5+ consecutive days more than 10% higher than daily average one week prior	60 - 79 -and- decreasing or stable compared to daily average one week prior	20 - 59 -and- decreasing or stable compared to daily average one week prior	<20
Non-ICU beds occupied by COVID patients Chicago hospitals 7-day rolling daily average	MODERATE STABLE 377	1250+ or- 7+ consecutive days more than 15% higher than daily average one week prior	750 - 1249 -or- 5+ consecutive days more than 10% higher than daily average one week prior	250 - 749	100 - 249	<100
ICU beds occupied by COVID patients Chicago hospitals 7-day rolling daily average	MODERATE STABLE 145	400+ -or- <20% overall ICU bed availability	300 - 399 -or- <22% overall ICU bed availability	100 - 299	20 - 99	<20



COVID-19 Outcomes by Race/Ethnicity and Geography

Weekly changes in COVID-19 cases by race/ethnicity and age group for week ending April 24th (comparisons to week ending April 17th)



Age Group (years)	Latinx	% of Age grp	Change from last week	Black, NL	% of Age grp	Change from last week	White, NL	% of Age grp	Change from last week	Asian, NL	% of Age grp	Change from last week	Total (percent)	Change from last week
0-17	172	38%	-36	150	33%	-56	81	18%	-33	16	4%	-3	630 (17%)	-127
18-44	433	27%	-114	600	38%	-105	353	22%	-133	105	7%	29	2,008 (54%)	-447
45-64	172	26%	-25	307	46%	-30	130	19%	-41	27	4%	2	814 (22%)	-129
65+	32	16%	-3	108	53%	-4	46	22%	-18	9	4%	5	238 (6%)	-21
Total	809	28%	-178	1,165	40%	-195	610	21%	-225	157	5%	33	3,690	-724

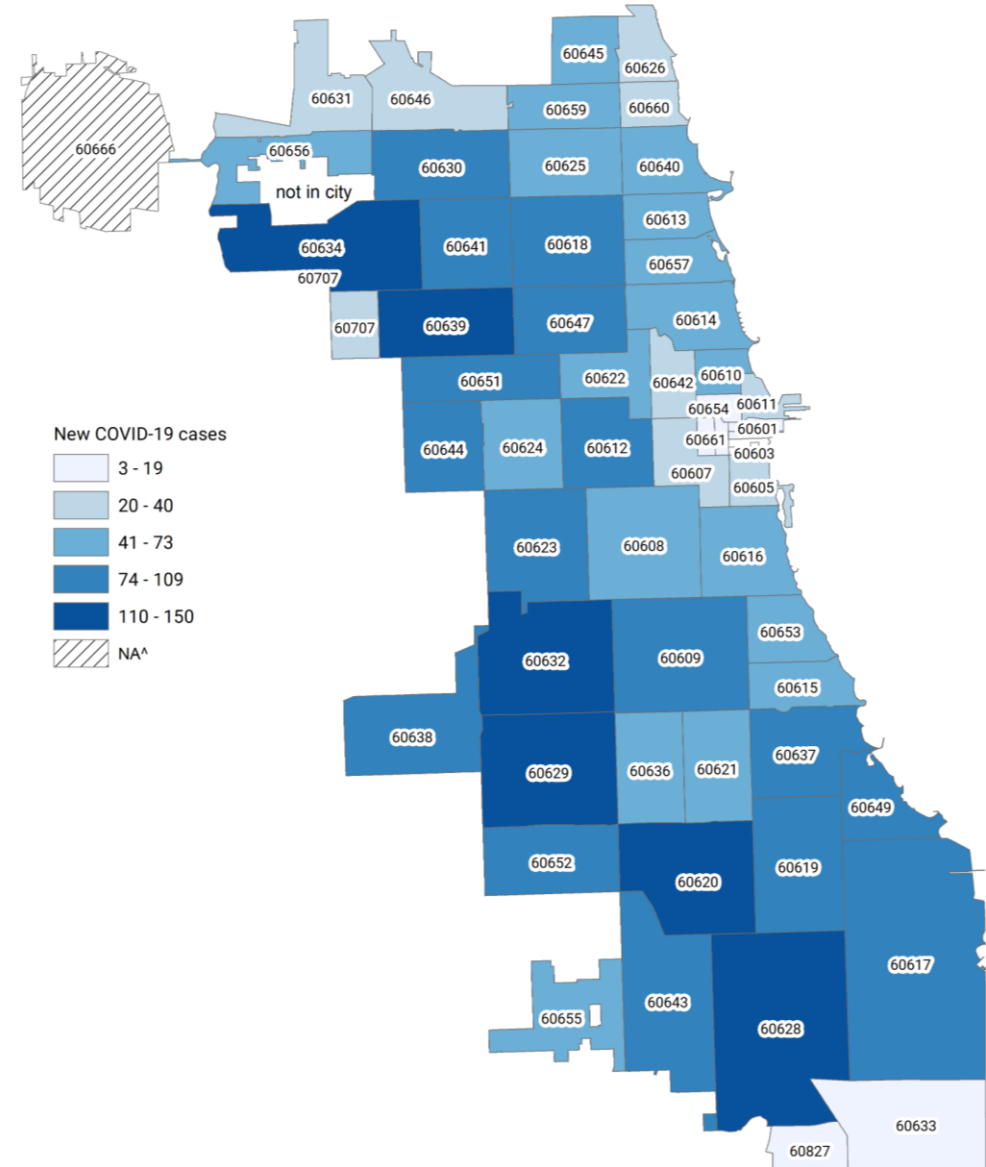
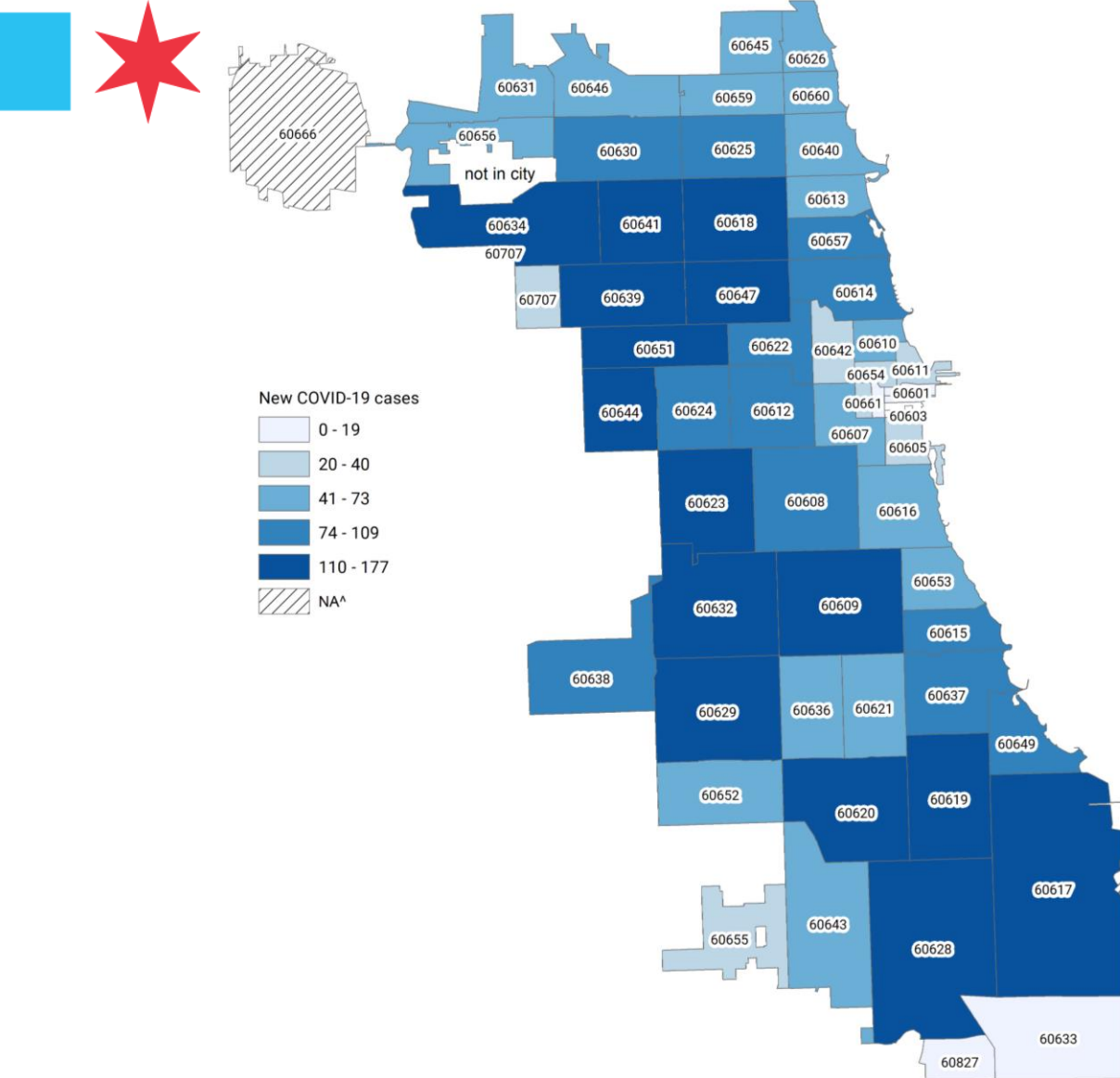
Percentages are computed using confirmed COVID-19 cases with known race/ethnicity.

Data pulled Wednesday 4/21/21

Changes in weekly case counts by zip code

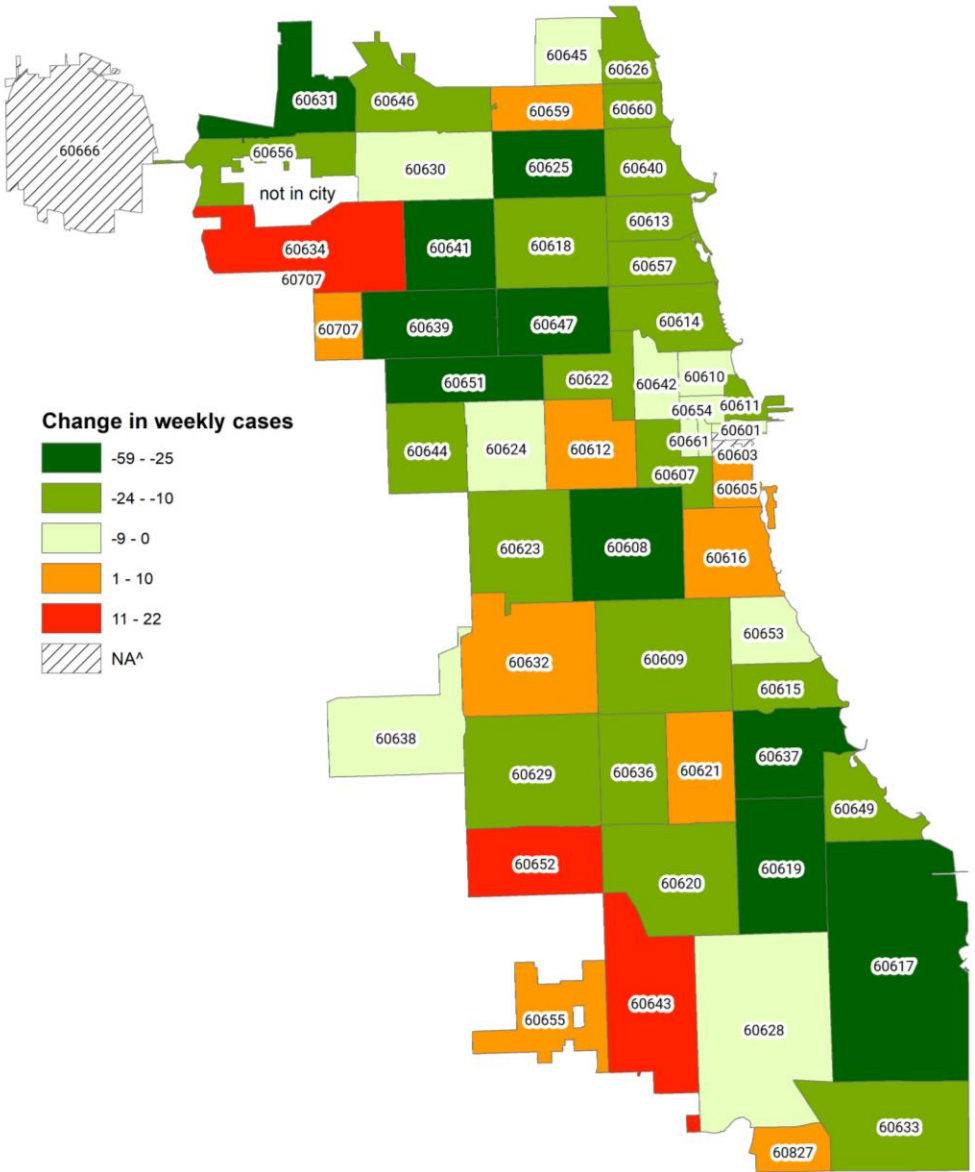
Week ending 4/17/21 (n=4,416)

Week ending 4/24/21 (n=3,690)



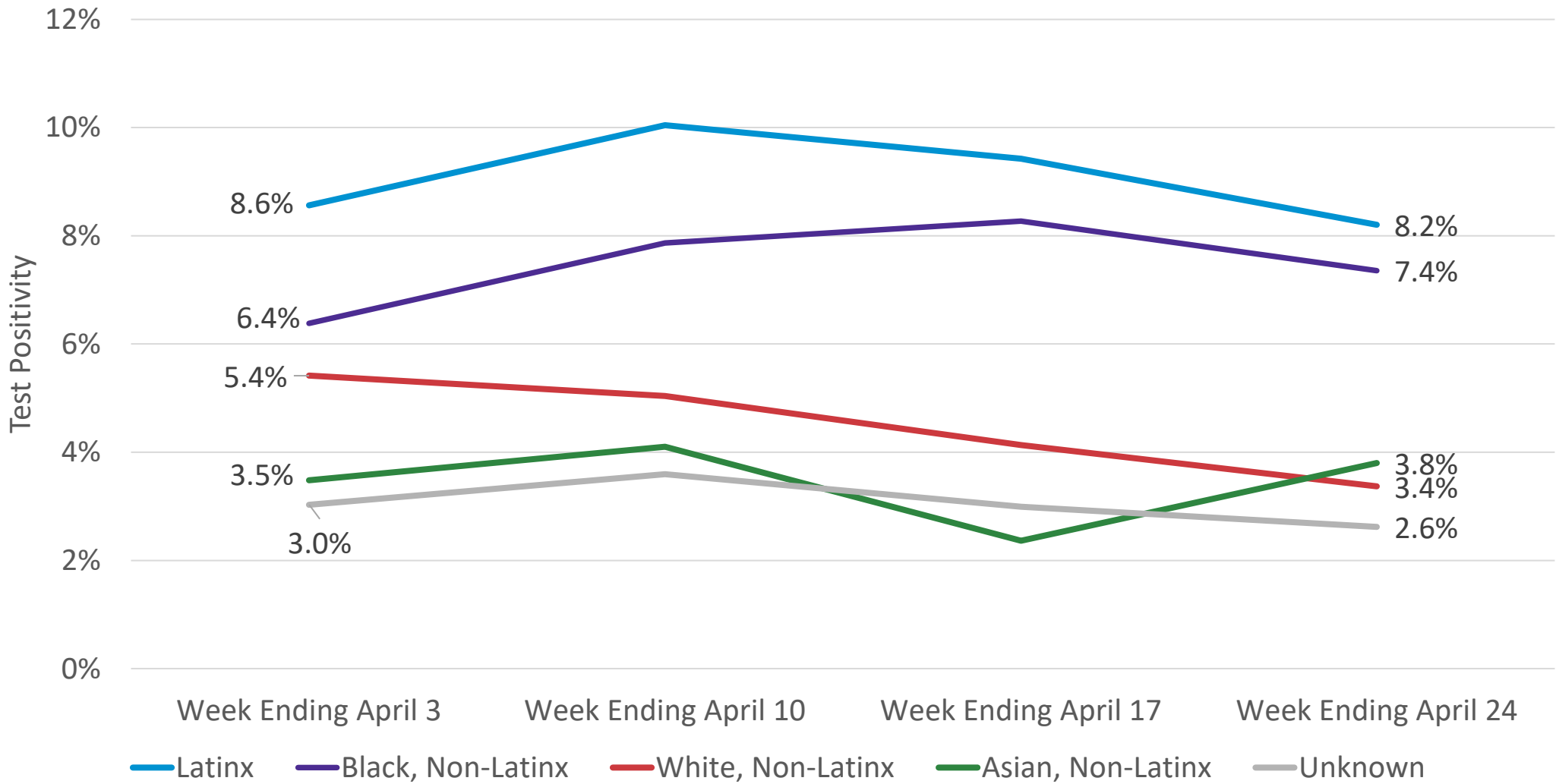
Note: Week is data through the Wednesday after the end date for the week. Week 16 ending April 24th and week 15 ending April 17th

Changes in weekly case counts by zip code week ending Apr 24th compared to week ending Apr 17th

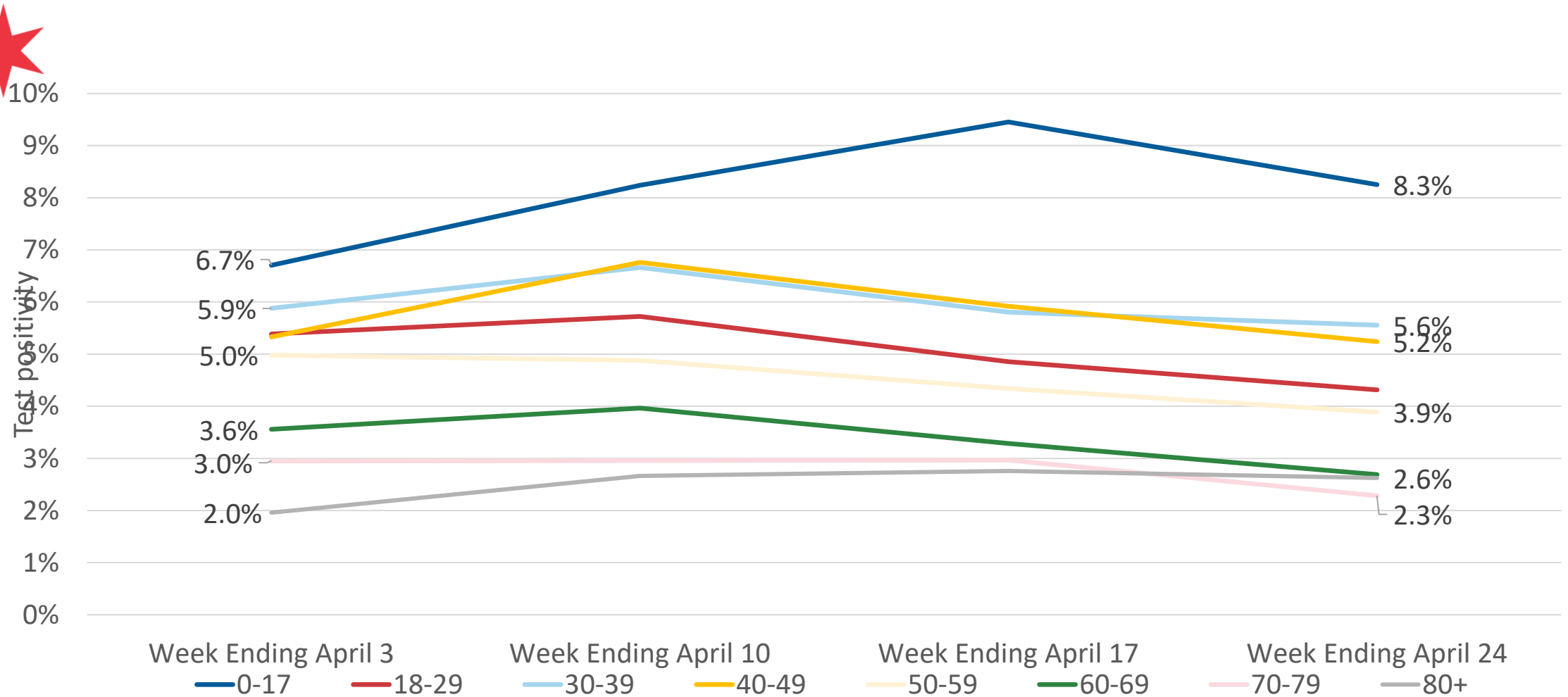


Note: Week is data through the Wednesday after the end date for the week. Week 16 ending April 24th and week 15 ending April 17th

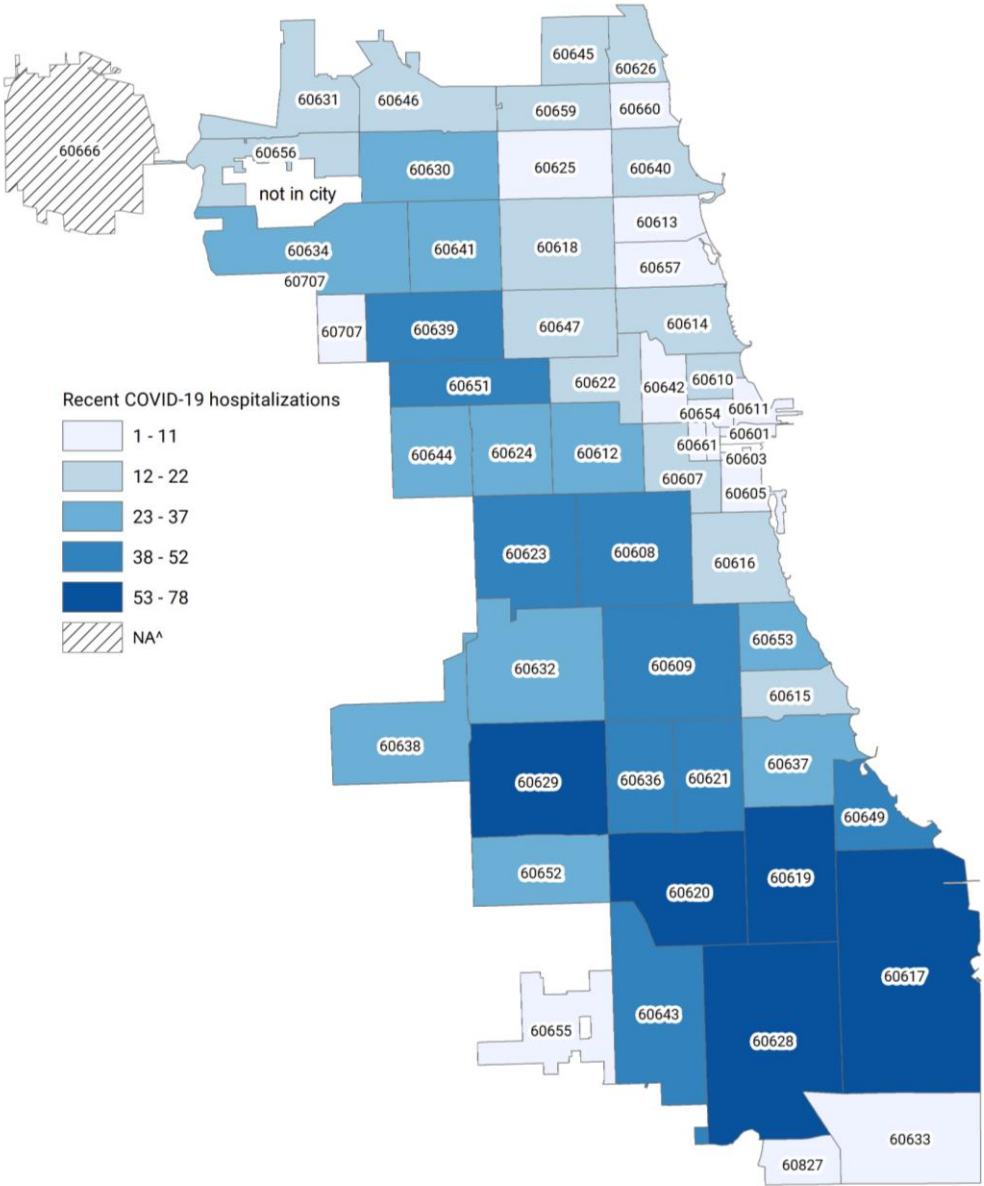
Test positivity by Race-Ethnicity (March 28 – April 24, 2021)



Test positivity by Age through (March 28 – April 24, 2021)



Recent COVID-19 hospitalizations by Chicago zip code (Mar 28 – Apr 24, 2021) n=1,440



Please note that COVID-19 hospitalizations have significant reporting delays

Recent COVID-19 hospitalizations by race/ethnicity and age group (Mar 28– Apr 24, 2021)

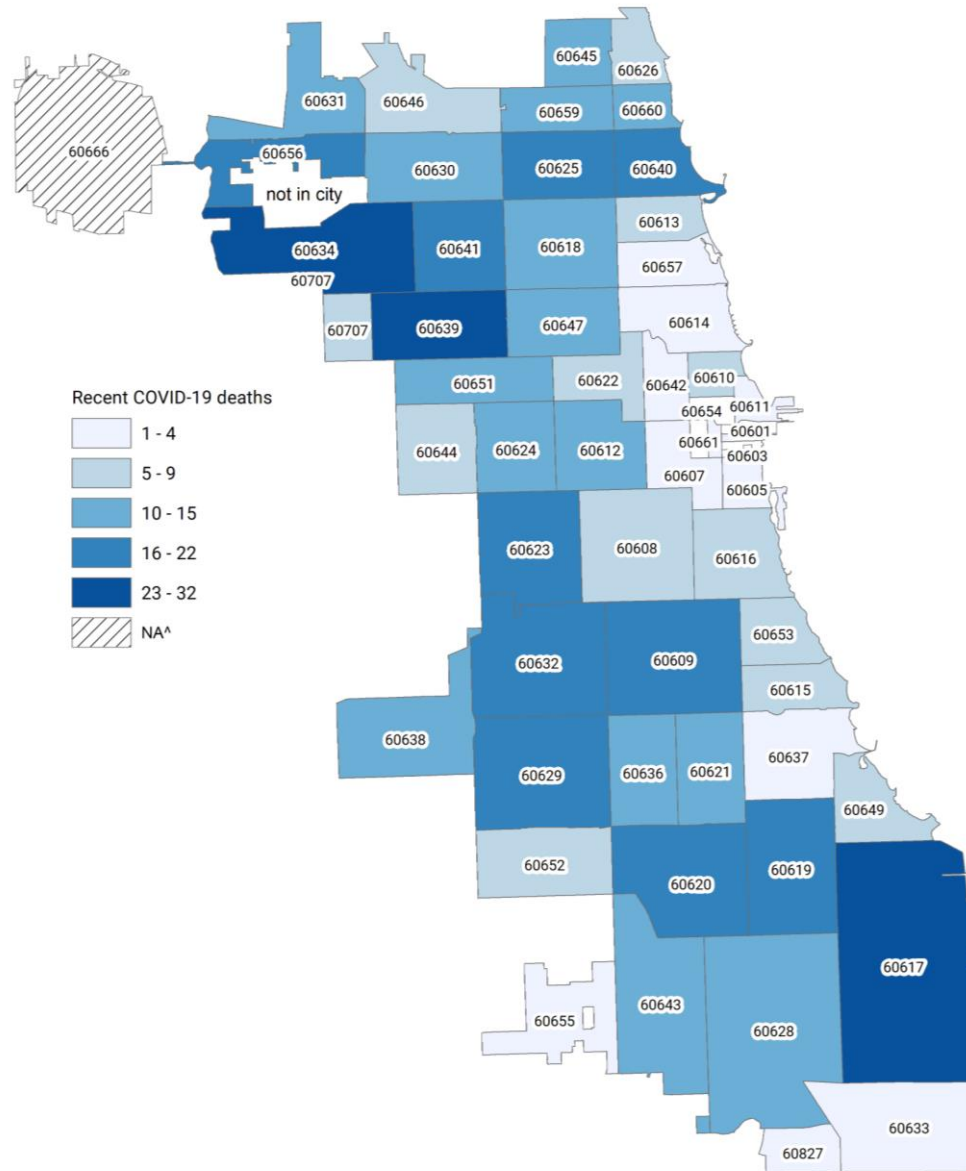


Age Group (years)	Latinx	% of Age grp	Black, NL	% of Age grp	White, NL	% of Age grp	Asian, NL	% of Age grp	Total	Percent
0-17	9	26%	17	50%	5	15%	3	9%	36	3%
18-44	91	24%	219	57%	49	13%	5	1%	403	28%
45-64	105	20%	329	62%	63	12%	15	3%	560	39%
65+	56	13%	247	58%	88	21%	8	2%	441	31%
Total	261	19%	812	59%	205	15%	31	2%	1,440	100%

Percentages are computed using COVID-19 hospitalizations with known race/ethnicity.

Data pulled Wednesday 4/28/21

COVID-19 deaths in 2021 through Apr 28th by Chicago zip code (n=579)



Please note that COVID-19 hospitalizations have significant reporting delays

2021 COVID-19 deaths by race/ethnicity and age group through April 27th



Age Group (years)	Latinx	% of Age grp	Black, NL	% of Age grp	White, NL	% of Age grp	Asian, NL	% of Age grp	Total	Percent
0-17	0	0%	0	0%	0	0%	0	0%	0	0%
18-44	8	25%	18	56%	3	9%	2	6%	32	6%
45-64	62	43%	57	39%	20	14%	6	4%	146	25%
65+	101	25%	138	35%	125	31%	29	7%	401	69%
Total	171	30%	213	37%	148	26%	37	6%	579	100%

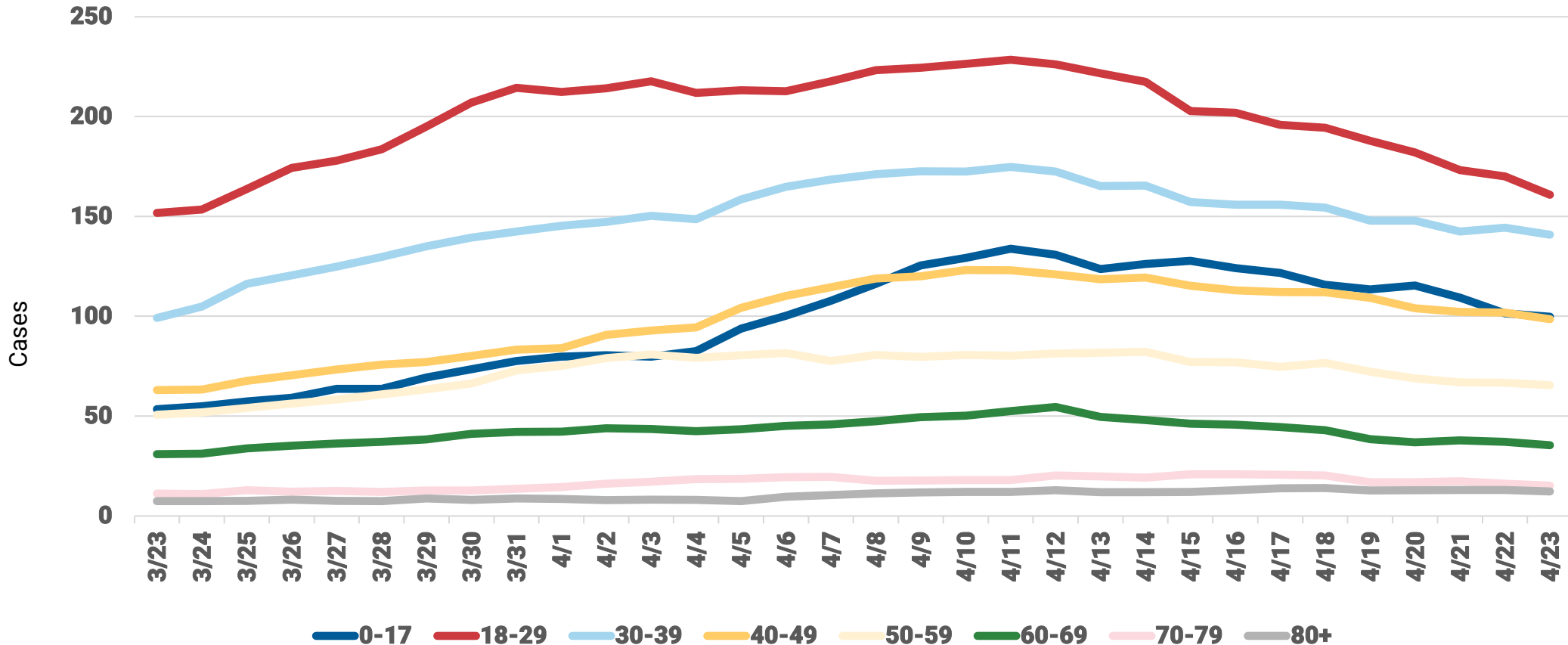
Percentages are computed using COVID-19 hospitalizations with known race/ethnicity.

Data pulled Wednesday 4/28/21

Incident cases are highest for 18-29 year olds. All age groups are decreasing..



COVID-19 Cases, on Specimen Date, by Age Group, rolling 7-day average

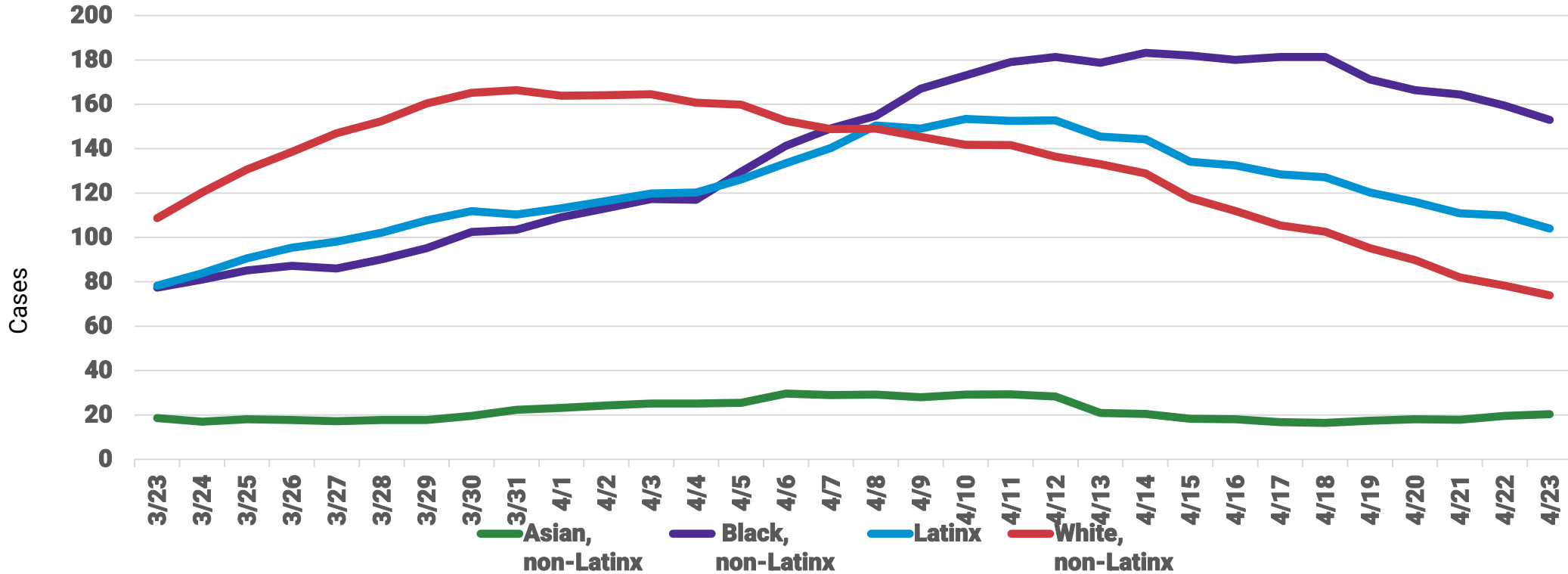


Daily COVID-19 cases with known specimen report date and race/ethnicity information. Case is defined as positive result on PCR or antigen test. This case definition was applied to the entire epidemic beginning on 2/8/2021 therefore these results are different from results reported prior. Source: INEDSS.

Incident cases are decreasing for every race/ethnicity.



COVID-19 Cases, on Specimen Date, by Race/Ethnicity, rolling 7-day average



Daily COVID-19 cases with known specimen report date and race/ethnicity information. Case is defined as positive result on PCR or antigen test. This case definition was applied to the entire epidemic beginning on 2/8/2021 therefore these results are different from results reported prior. Source: INEDSS.

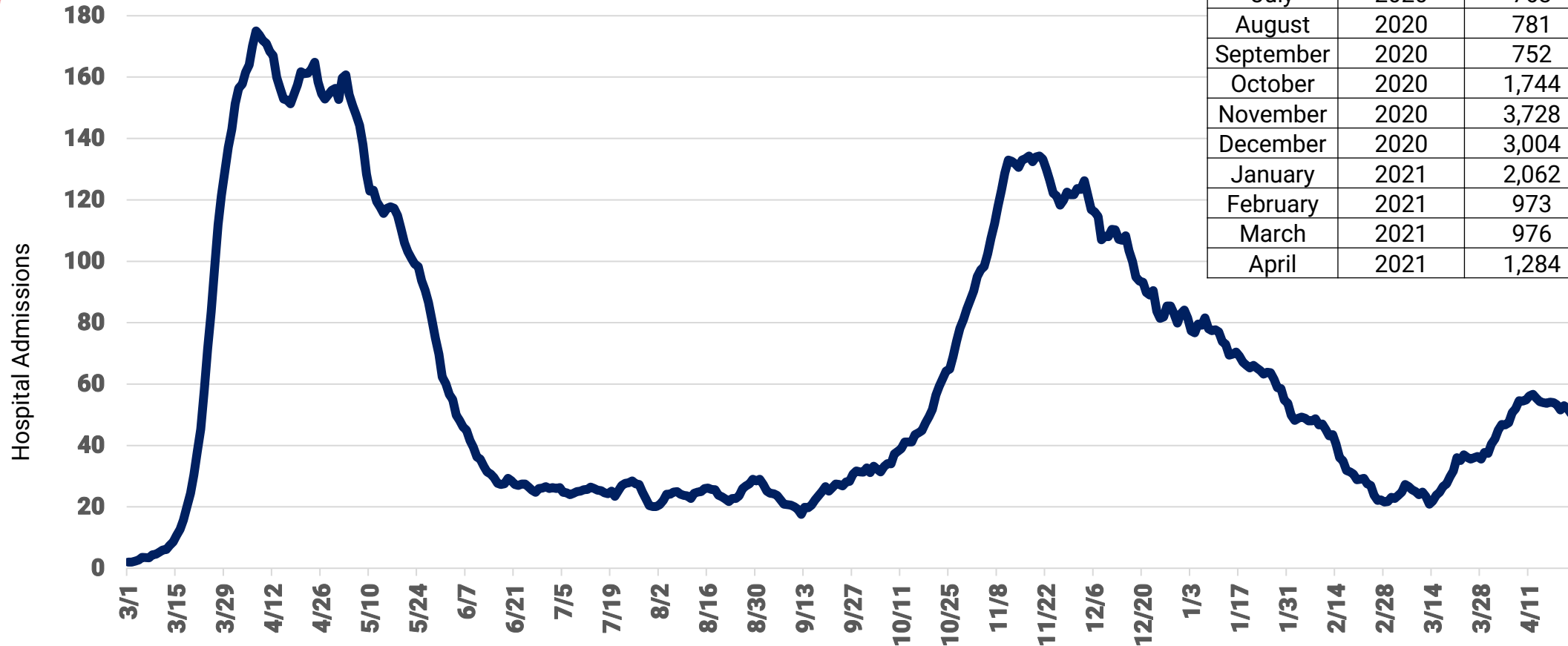


Hospital admissions

Cumulative epidemic hospitalization with table.



COVID-19 Hospital admissions, rolling 7-day average



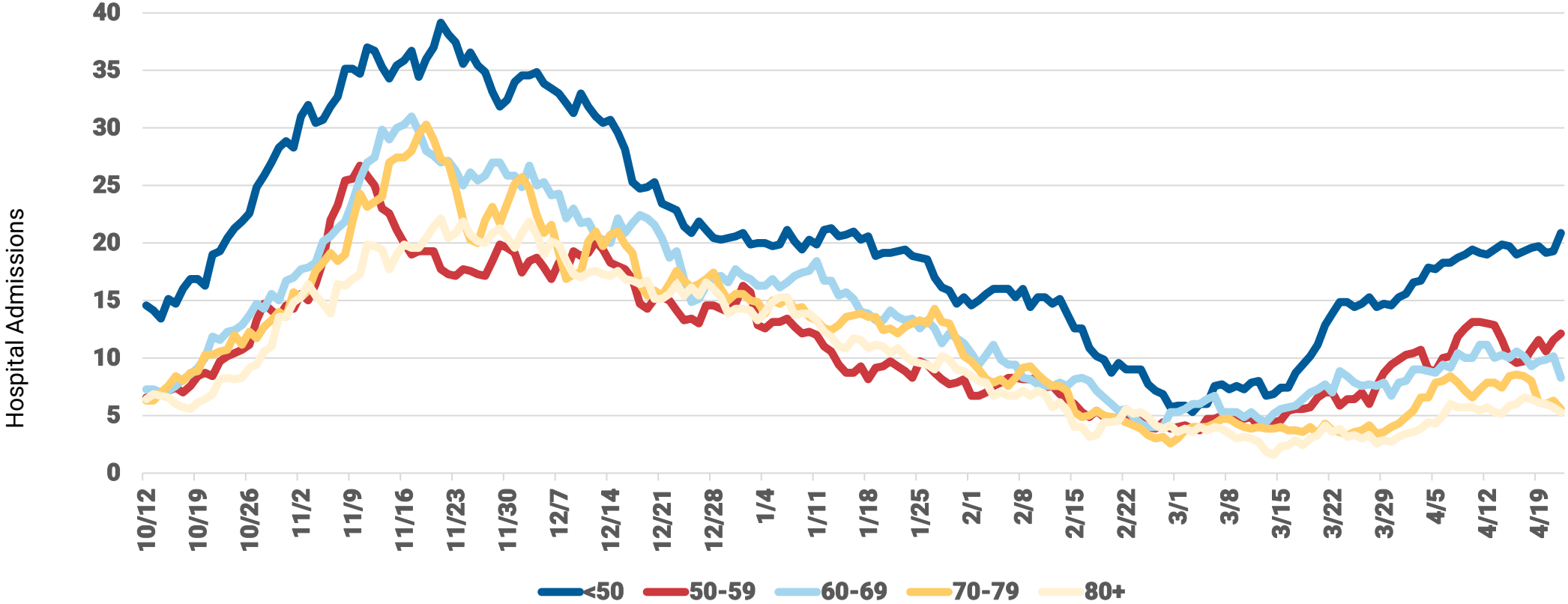
Month	Year	Hospital Admits frequency	Cumulative frequency
March	2020	1,655	1,655
April	2020	4,856	6,511
May	2020	3,252	9,763
June	2020	964	10,727
July	2020	763	11,490
August	2020	781	12,271
September	2020	752	13,023
October	2020	1,744	14,767
November	2020	3,728	18,495
December	2020	3,004	21,499
January	2021	2,062	23,561
February	2021	973	24,534
March	2021	976	25,510
April	2021	1,284	26,794

Hospitalizations are reported to CDPH by hospitals into I-NEDSS and ESSENCE and self-reported by patients via an online survey. Daily counts for most recent dates displayed are likely incomplete. Cases who are not indicated to have been hospitalized across any of the three data sources are assumed to not have been hospitalized. Six records with hospital admit dates from January and February 2020 are excluded from this chart. Peak daily admissions based on rolling 7-day average.

Recently, hospital admissions have risen in all age groups. Increases are largest in the younger age groups.



COVID-19 hospital admits, on Specimen Date, by Age Group with finer distinctions amongst oldest strata, rolling 7-day average

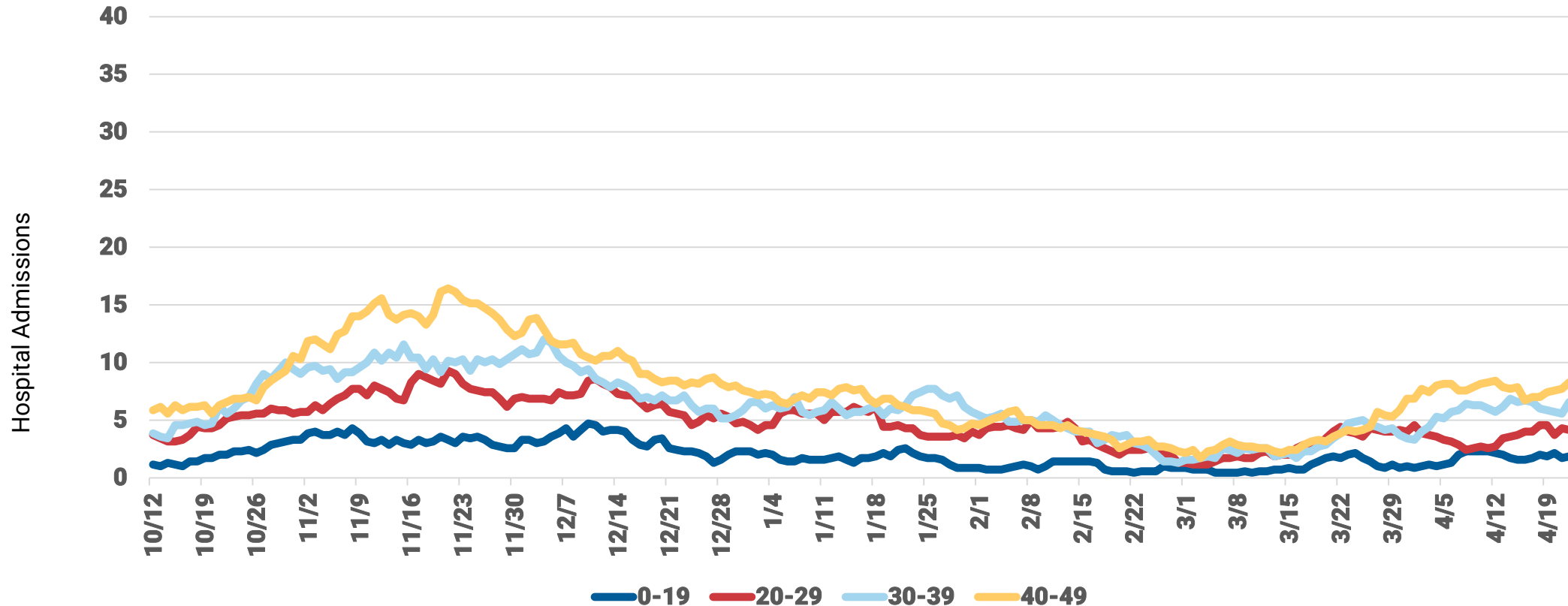


Hospitalizations are reported to CDPH by hospitals into I-NEDSS and ESSENCE and self-reported by patients via an online survey. Daily counts for most recent dates displayed are likely incomplete. Cases who are not indicated to have been hospitalized across any of the three data sources are assumed to not have been hospitalized. Six records with hospital admit dates from January and February 2020 are excluded from this chart. Peak daily admissions based on rolling 7-day average.

Recently, all younger age groups have seen increased admissions followed by flattening.



COVID-19 Cases, on Specimen Date, by Younger Age Group, rolling 7-day average

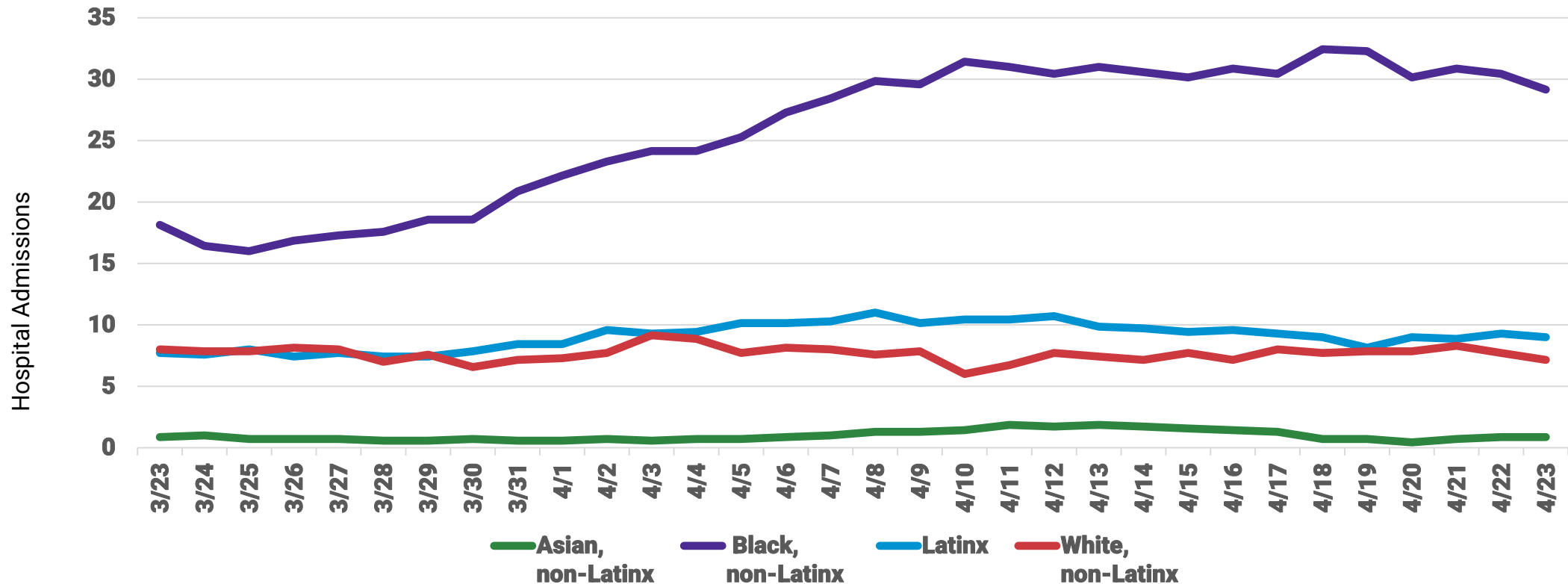


Hospitalizations are reported to CDPH by hospitals into I-NEDSS and ESSENCE and self-reported by patients via an online survey. Daily counts for most recent dates displayed are likely incomplete. Cases who are not indicated to have been hospitalized across any of the three data sources are assumed to not have been hospitalized. Six records with hospital admit dates from January and February 2020 are excluded from this chart. Peak daily admissions based on rolling 7-day average.

Daily COVID-19 hospital admissions are highest and rose fastest in Black, non-Latinx.



COVID-19 Hospital Admissions, by Race/Ethnicity, rolling 7-day average, first known hospital admit date



Hospitalizations are reported to CDPH by hospitals into I-NEDSS and ESSENCE and self-reported by patients via an online survey. Daily counts for most recent dates displayed are likely incomplete. Cases who are not indicated to have been hospitalized across any of the three data sources are assumed to not have been hospitalized. Six records with hospital admit dates from January and February 2020 are excluded from this chart. Peak daily admissions based on rolling 7-day average.

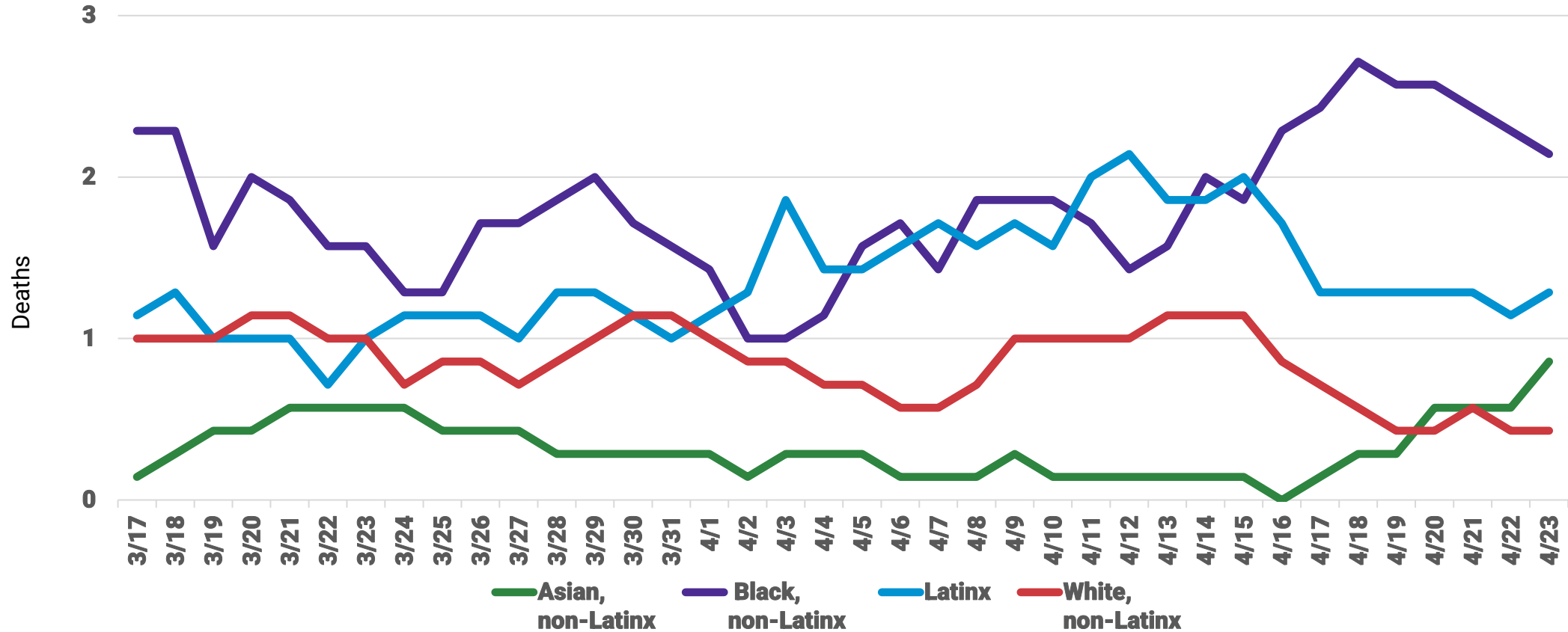


Deaths

Daily COVID-19 deaths have no clear pattern by race/ethnicity.



COVID-19 Deaths, by Race/Ethnicity, rolling 7-day average



Daily COVID-19 deaths reported for Chicago residents with known death date. Data source: INEDSS. A five day lag is imposed to reduce inaccuracy created by reporting delays.



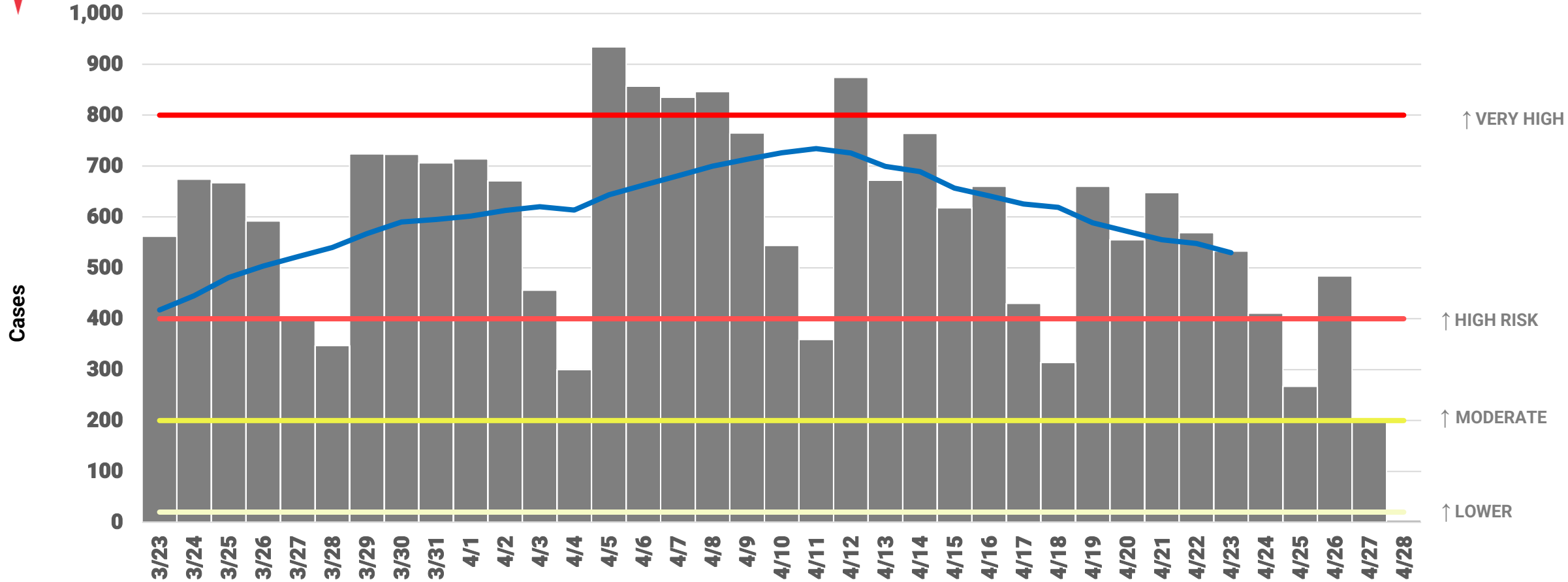
COVID-19 Cases

COVID-19 case incidence risk level is high.

Date	Incident case count, 7DRA	Consecutive days with 10%+ change	Consecutive days with 15%+ change	Risk level	# of days 10%+ in last week
4/29/2021	524	0	0	HIGH	0



COVID-19 cases, daily counts and rolling 7-day average, specimen date

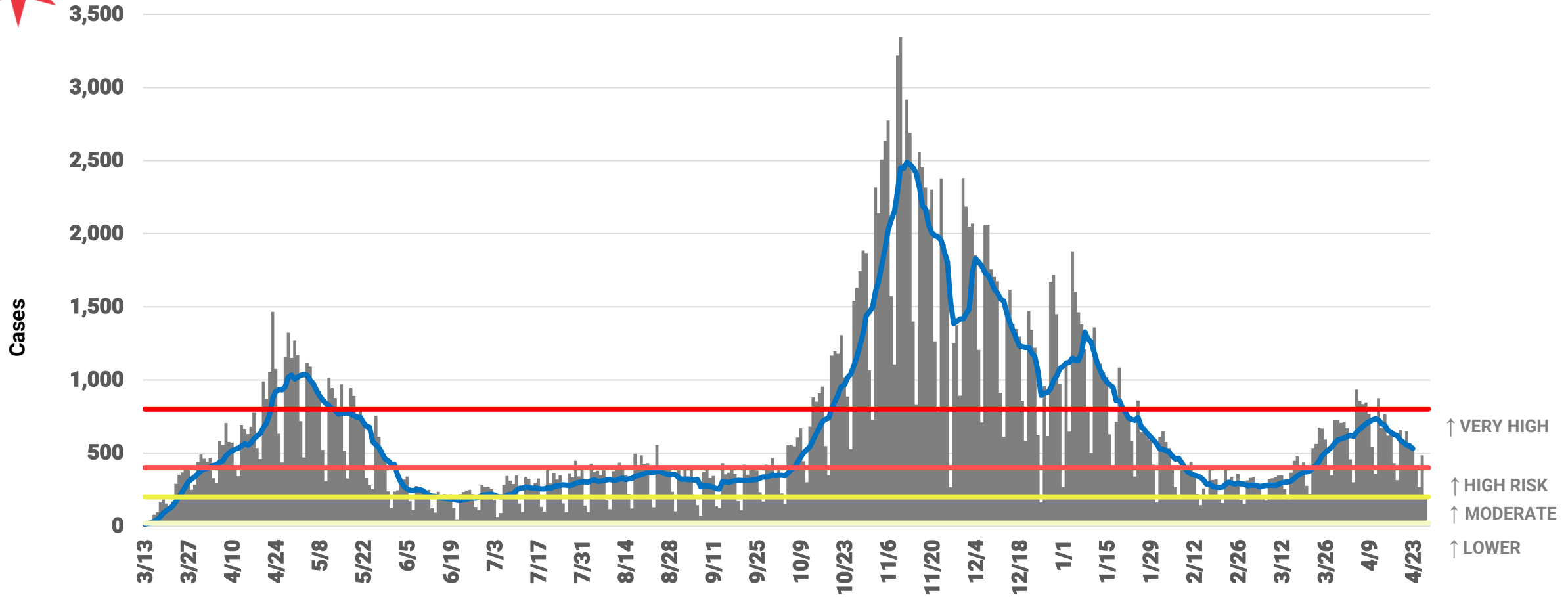


Daily COVID-19 cases with known specimen report date. Case is defined as positive result on PCR or antigen test. This case definition was applied to the entire epidemic beginning on 2/8/2021 therefore these results are different from results reported prior. Source: INEDSS.

COVID-19 case incidence risk level varies over time.



COVID-19 cases, daily counts and rolling 7-day average, specimen date



Daily COVID-19 cases with known specimen report date. Case is defined as positive result on PCR or antigen test. This case definition was applied to the entire epidemic beginning on 2/8/2021 therefore these results are different from results reported prior. Source: INEDSS.

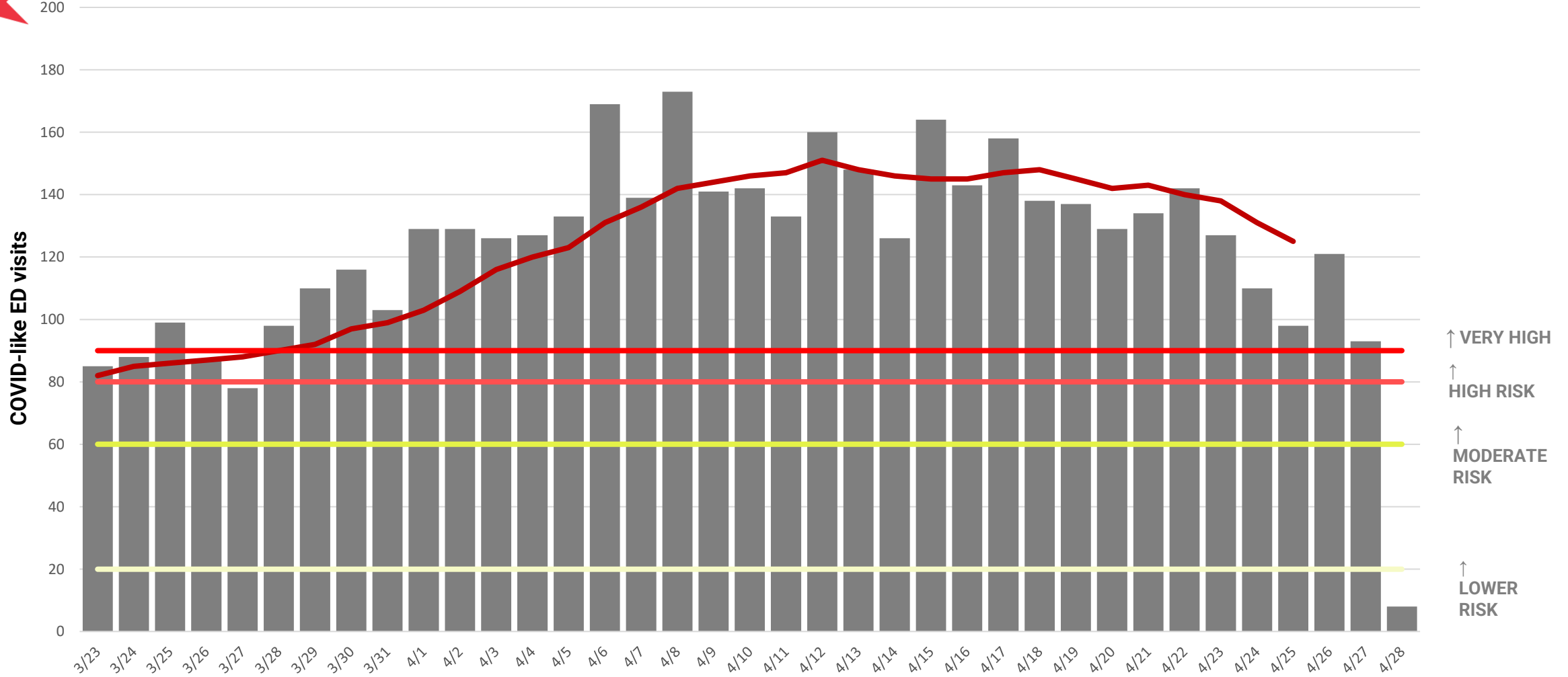


Emergency Department Visits

ED visits for COVID-like illness risk level is very high and declining.

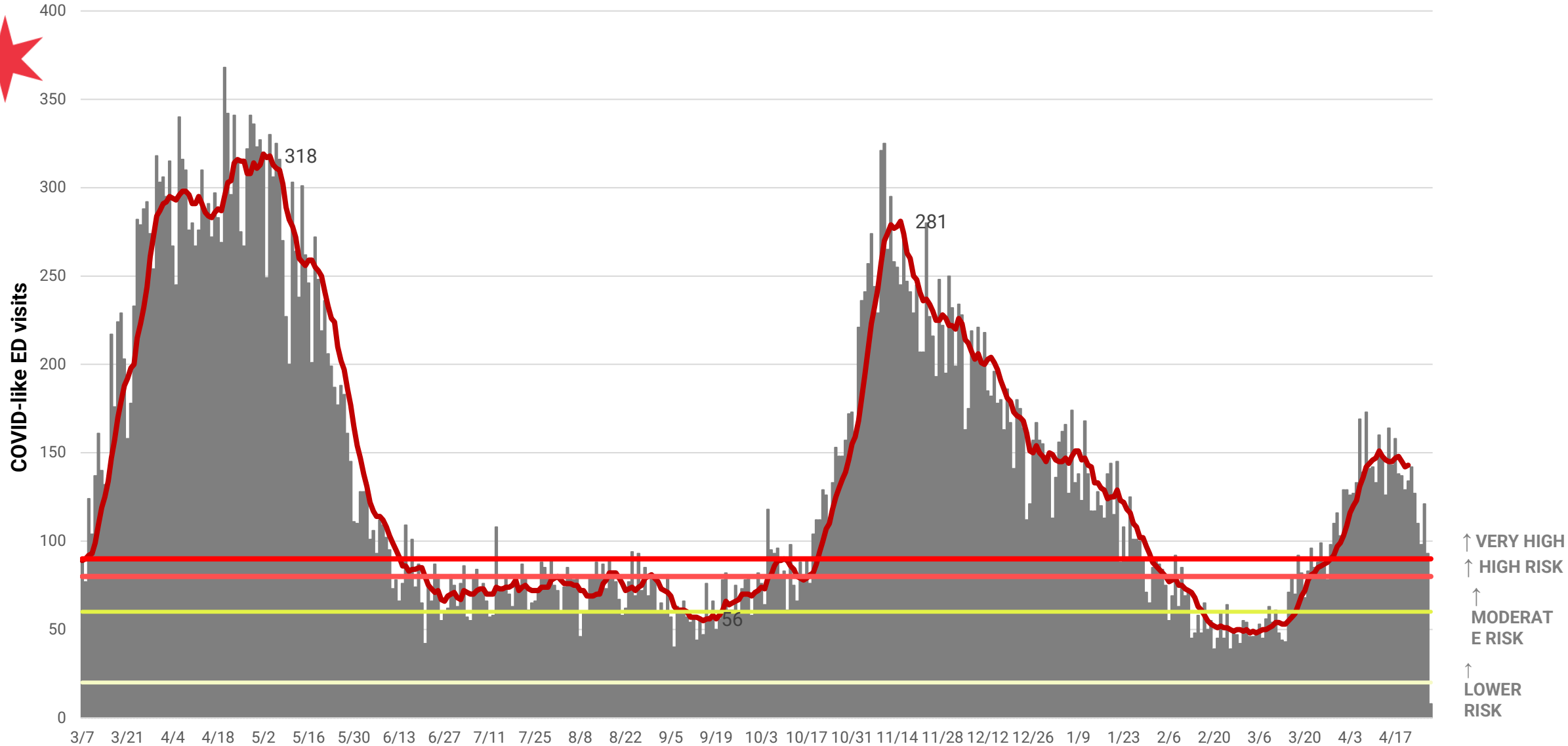


Date	CLI ED visit count, 7DRA	Consecutive days with 10%+ change	Consecutive days with 15%+ change	Risk level	# of days 10%+ in last week
4/29/2021	125	0	0	VERY HIGH	0



Count of all emergency department visits, and inpatient reported with COVID-like symptoms among Chicago residents.
 Data Source: Illinois Hospital Emergency Departments reporting to CDPH through the National Syndromic Surveillance Project.

ED visits for COVID-like illness reached the highest peak in early May and is currently decreasing.



Count of all emergency department visits, and inpatient reported with COVID-like symptoms among Chicago residents.
Data Source: Illinois Hospital Emergency Departments reporting to CDPH through the National Syndromic Surveillance Project.



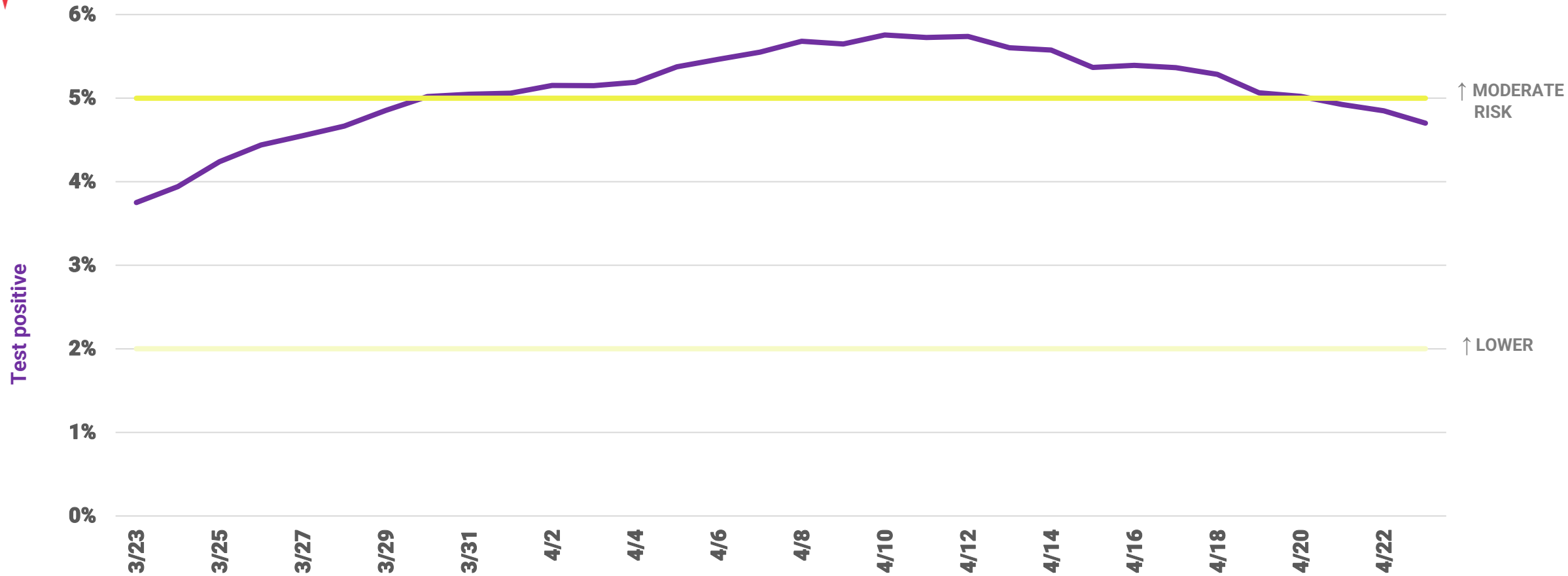
Test Positivity

Test positivity risk level is moderate and declining

Date	Test Positivity, 7DRA	Consecutive days with 10%+ change	Consecutive days with 15%+ change	Risk level	# of days 10%+ in last week
4/29/2021	4.7%	0	0	LOWER	0



COVID-19 tests, 7-day rolling average for test positive (%)

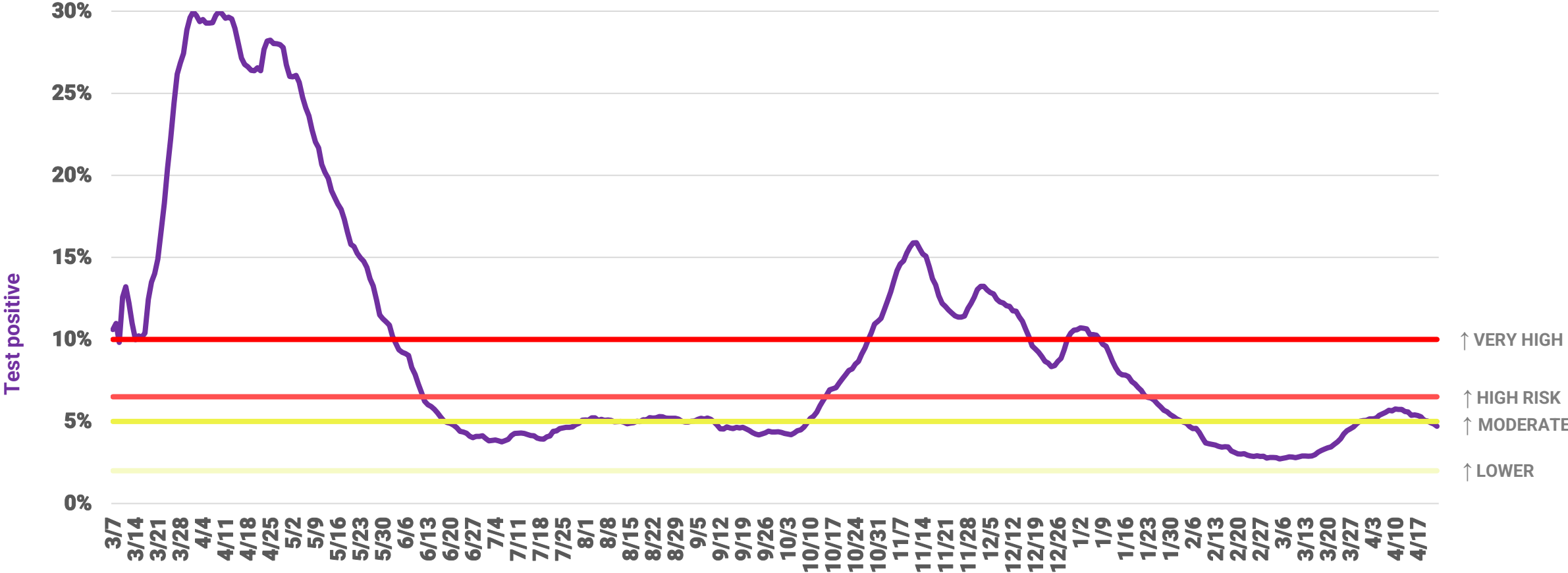


Test positivity is the number of positive tests divided by all tests performed. For the purposes of public reporting, the definition of 'tests' was expanded on 2/8/2021 to include antigen tests in addition to PCR tests. (Previous reports only described PCR tests). The new definition is applied to testing performed at any point during the epidemic. Source: INEDSS.

Test positivity varies over time.



COVID-19 tests, 7-day rolling average for test positive (%)

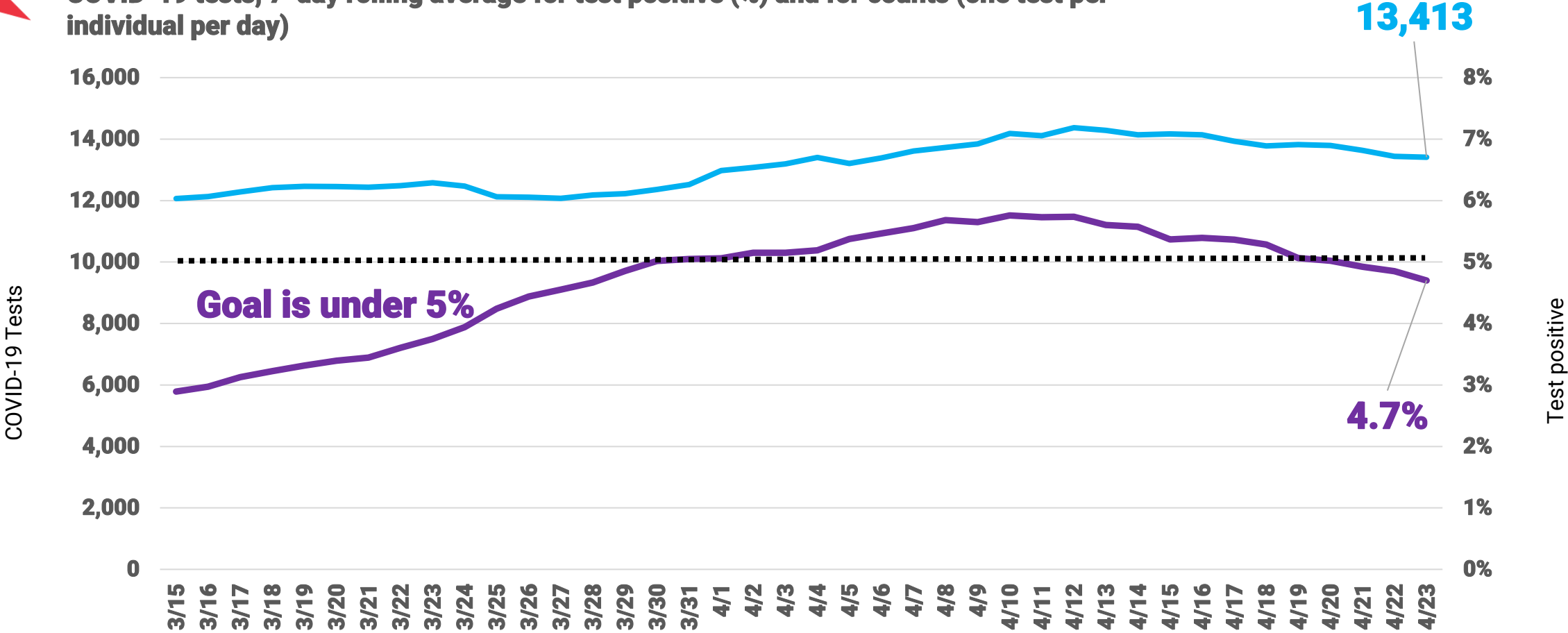


Test positivity is the number of positive tests divided by all tests performed. For the purposes of public reporting, the definition of ‘tests’ was expanded on 2/8/2021 to include antigen tests in addition to PCR tests. (Previous reports only described PCR tests). The new definition is applied to testing performed at any point during the epidemic. Source: INEDSS.

Test positivity is lower while testing counts are flat.



COVID-19 tests, 7-day rolling average for test positive (%) and for counts (one test per individual per day)

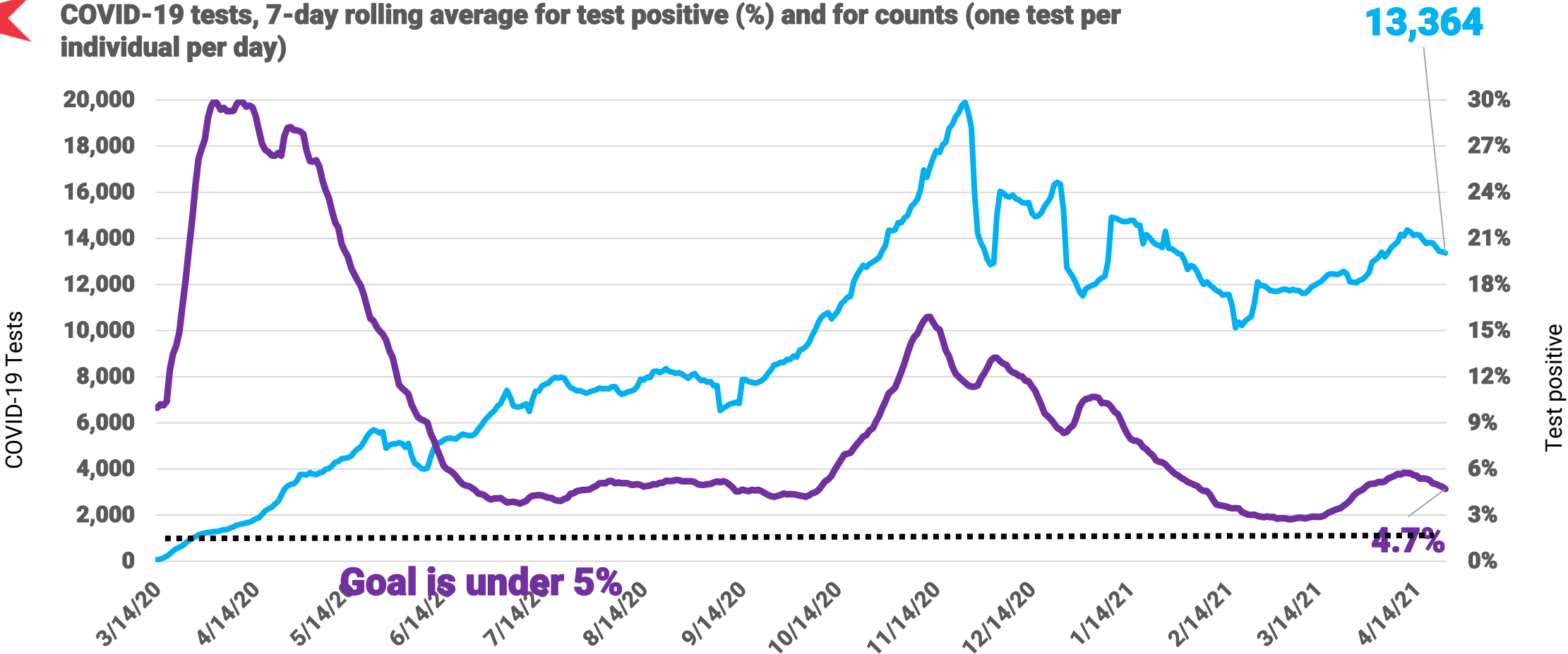


Test positivity is the number of positive tests divided by all tests performed (Source: INEDSS).

Test positivity and testing count have varied greatly over the entire duration of the epidemic.



COVID-19 tests, 7-day rolling average for test positive (%) and for counts (one test per individual per day)



Test positivity is the number of positive tests divided by all tests performed (Source: INEDSS).



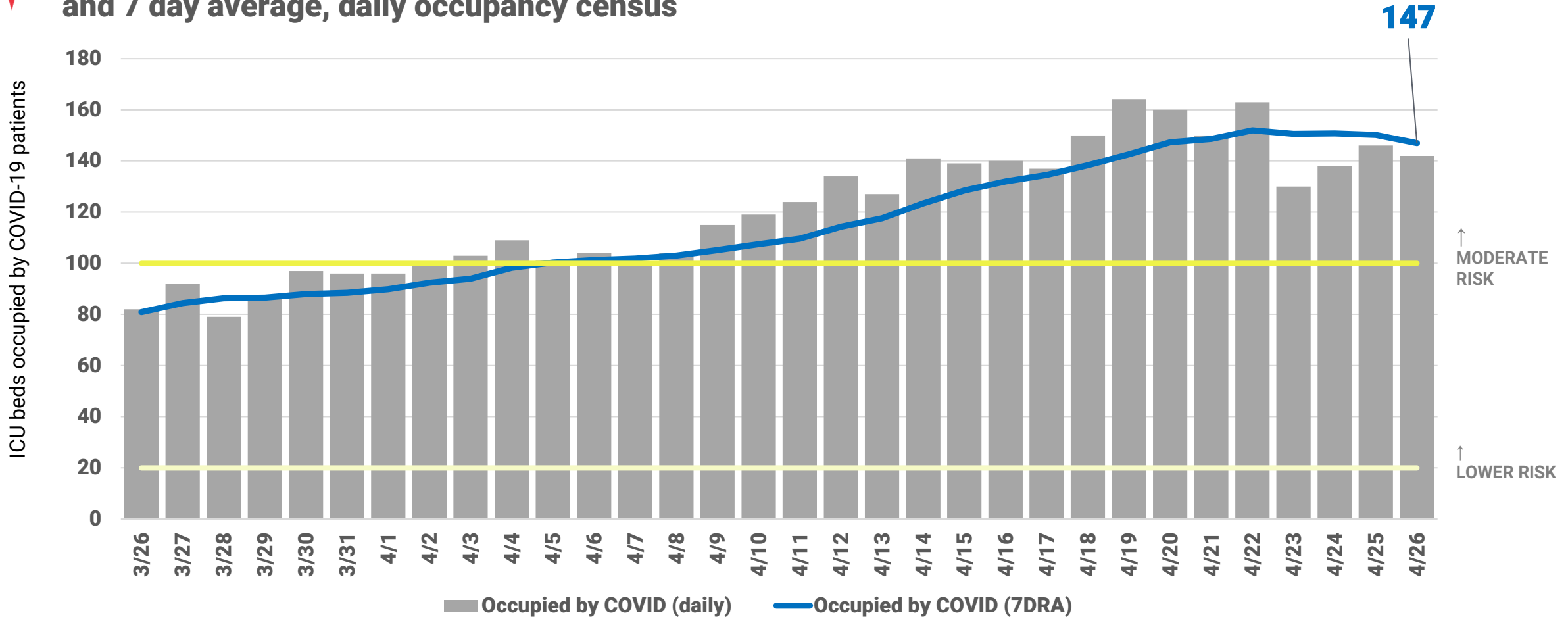
Hospital System Capacity

COVID-19 occupied ICU beds risk level is moderate.

Date	ICU Beds Occupied by COVID-19, 7DRA	ICU Bed Availability, 7DRA	Risk level
4/29/2021	145	21%	MODERATE



ICU beds occupied by COVID-19 patients, daily counts and 7 day average, daily occupancy census



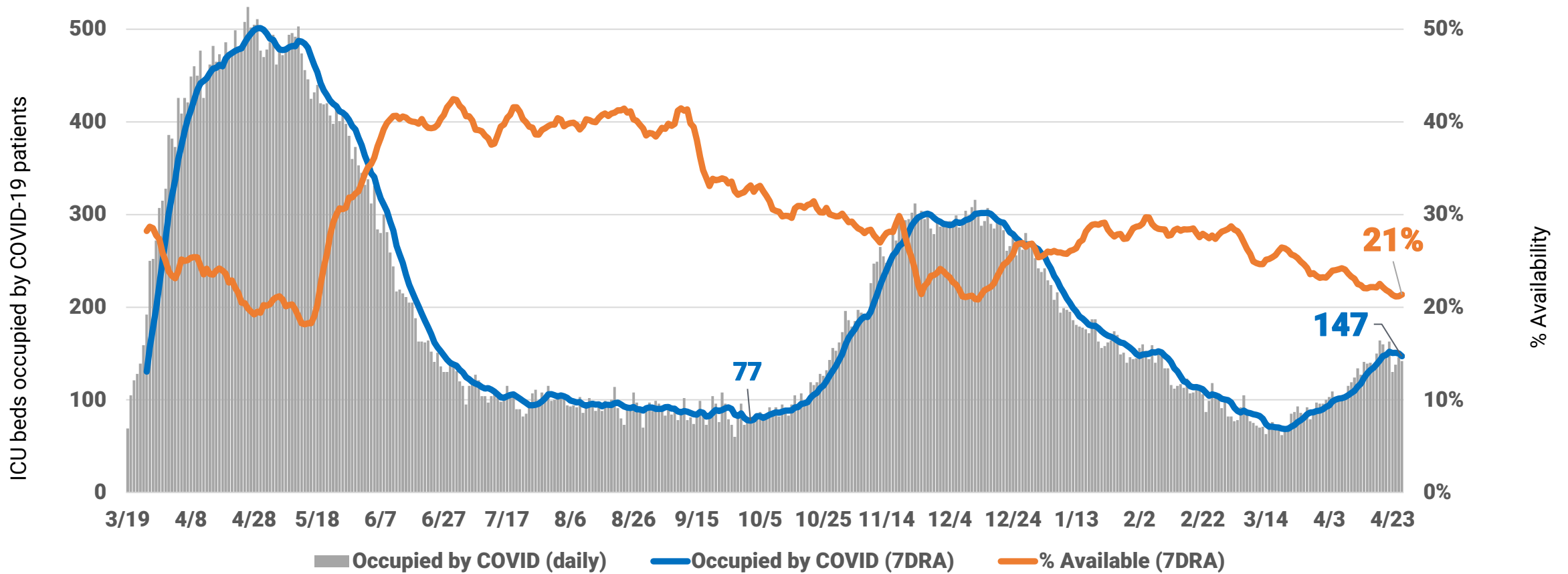
Includes all Chicago hospitals. Hospitals report daily to CDPH via EMResource, beginning March 19. ICU bed count includes all adult and pediatric ICU beds in Chicago hospitals. Includes Chicago and non-Chicago residents. Includes confirmed and suspected COVID-19 cases.

ICU availability and occupancy from COVID-19 varies.

Date	ICU Beds Occupied by COVID-19, 7DRA	ICU Bed Availability, 7DRA	Risk level
4/26/2021	147	21%	MODERATE



ICU beds available and occupied by COVID-19 patients, daily counts and 7 day average, daily occupancy census

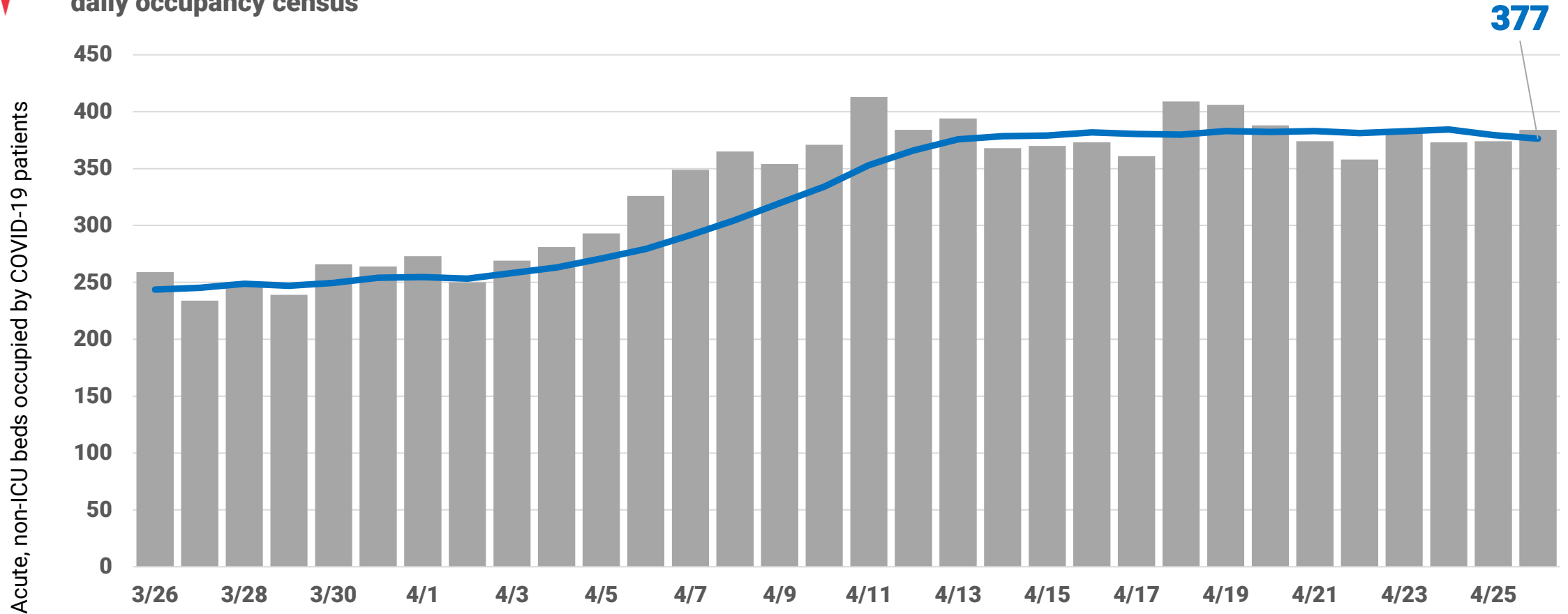


Includes all Chicago hospitals. Hospitals report daily to CDPH via EMResource, beginning March 19. ICU bed count includes all adult and pediatric ICU beds in Chicago hospitals. Includes Chicago and non-Chicago residents. Includes confirmed and suspected COVID-19 cases.

Acute, non-ICU bed census of COVID patients is flat.



COVID-19 acute/non-ICU beds occupied, daily counts and 7 day average, daily occupancy census

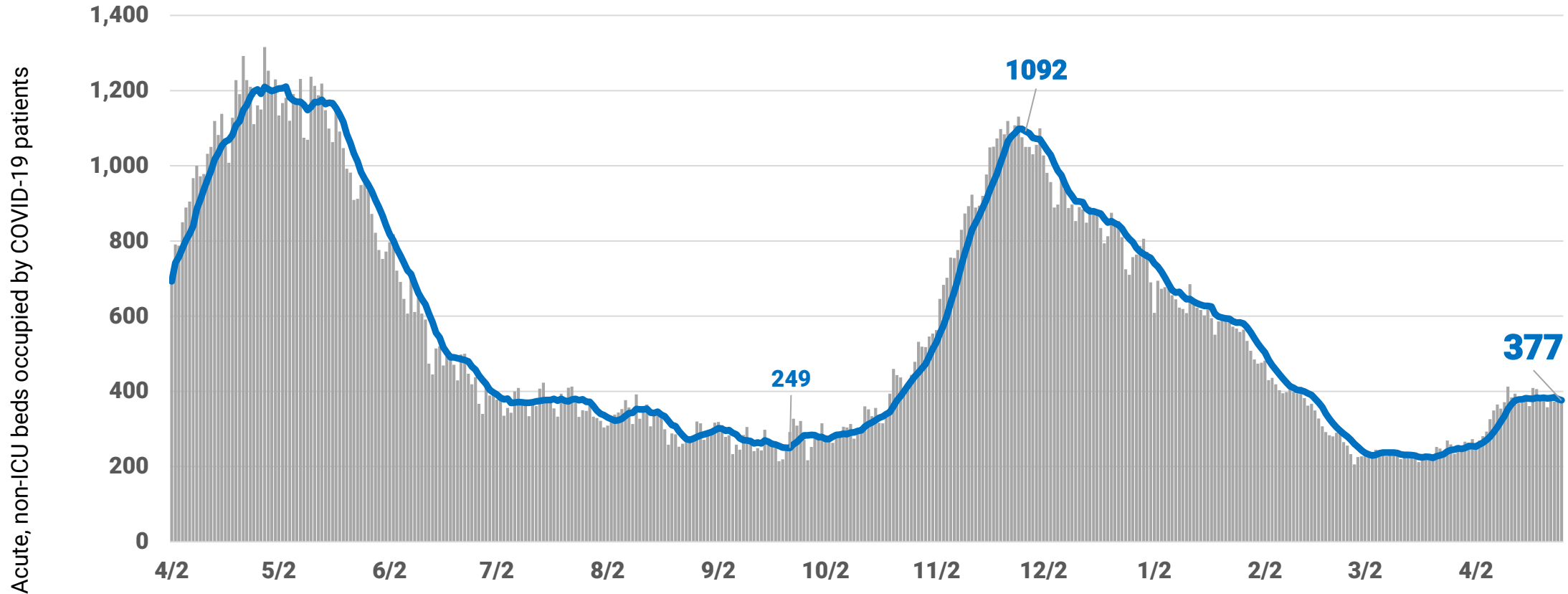


Includes all Chicago hospitals. Hospitals report daily to CDPH via EMResource, beginning March 19.. Includes Chicago and non-Chicago residents. Includes confirmed and suspected COVID-19 cases.

Acute, non-ICU bed census of COVID patients varies over time.



COVID-19 acute/non-ICU beds occupied, daily counts and 7 day average, daily occupancy census



Acute, non-ICU beds occupied by COVID-19 patients

Includes all Chicago hospitals. Hospitals report daily to CDPH via EMResource, beginning March 19.. Includes Chicago and non-Chicago residents. Includes confirmed and suspected COVID-19 cases.