

# Roseland Rising

Meet the Developers Meeting

April 19, 2023

# Roseland Rising Collaborative

## Development Team

- Chicago Neighborhood Initiatives
- Far South CDC

## Consultants/Community Partners

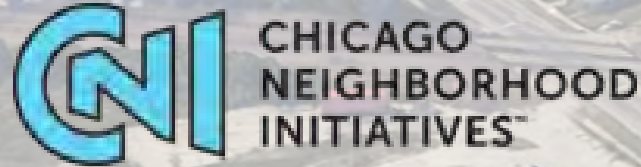
- Q2 (Retail/Development Consultant)
- Roseland Chamber of Commerce
- Hope Center Foundation

## GC/Construction Manager

- BOWA Construction

## Legal/Zoning

- Neal & Leroy



# Chicago Neighborhood Initiatives

Lead Developer

CNI's mission is to strengthen Chicago area low-to-moderate-income neighborhoods by collaborating with community stakeholders to encourage and develop new economic opportunities.

CNI began its work in 2010 focusing on Pullman. Since then, we have expanded our scope throughout the Chicago area. We remain committed to collaboration, innovation, and creativity to increase equity and attract the jobs and investments that will restore our neglected neighborhoods and improve people's lives.

## Project Team



**David Doig**  
President



**Jennifer Bransfield**  
COO & Legal Council



**Kimberly Morris**  
Director of Real Estate  
Project Team Lead



**Nicholette  
Cameron**  
Project Manager



**Donald Higgins**  
Project Manager

# Developing High Impact Projects

*Industrial*



*Affordable Housing*



*Historic Preservation*



*Commercial*



*Retail*



# Far South Community Development Corp

Co-Developer

Far South Community Development Corporation (Far South CDC) is a 501(c)(3) nonprofit organization that provides strategic community-building services to residents and businesses in Chicago's Far South Side neighborhoods and across south suburban Cook County. Far South CDC is one of the largest comprehensive community development organizations in the Chicago region that provides direct residential support, business assistance, and equitable development and planning services. The organization is a voice and advocate for economic, environmental, and social justice for the region.

Far South CDC's mission is to alleviate low-income communities within Chicago's far south side and south suburban Cook County of poverty, blight, and economic distress through effective economic and community development.

## Project Team



**Abraham Lacy**  
President



**Florence Hardy**  
Chief Innovation Officer +  
General Council



**Katanya Raby**  
Vice President of Planning  
**Team Lead**



**Will Bouman**  
Project Program Coordinator

# Bringing Communities Back Initiative





# Roseland Rising: Reviving Michigan Ave

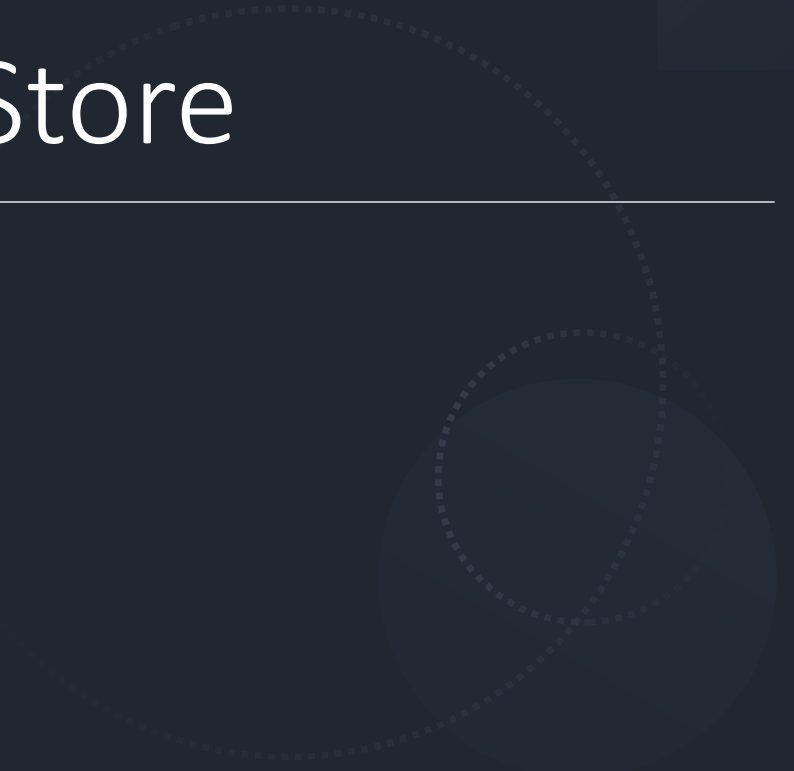
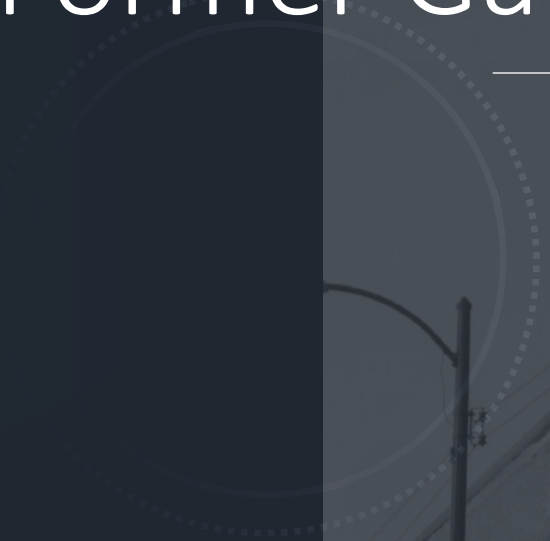
---

*“Roseland Rising is a comprehensive development strategy that envisions the development of Michigan Station, Gately’s Peoples Site and the Roseland Theater building into a vibrant and culturally rich commercial corridor, mirroring the vivacity and robust commercial activity of Michigan Avenues’ past.”*



# Site 1 – Former Gately’s People’s Store

Design Team: Canopy





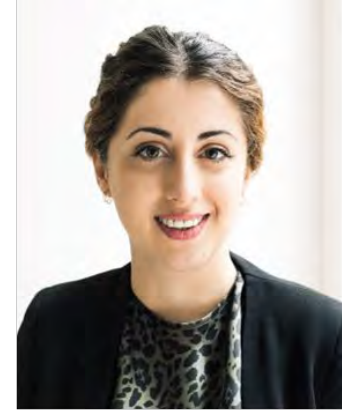
# CANOPY<sup>A/D</sup>



Jaime Torres  
Carmona AIA, LEED  
AP  
Principal and  
Founder



Armando  
Tobias AIA  
Principal



Andreea  
Micu AIA,  
CDT  
Senior Associate  
and Project  
Manager



Tayo Odunlami  
LEED GA  
Project Associate



Tom McCormick  
Project Associate



Charlotte Elo  
LEED GA  
Project Designer



Esti Shapiro  
Marketing and  
Outreach Coordinator

# Project Experience

**OSO Apartments** Albany Park



**1630 W Cullerton** Pilsen

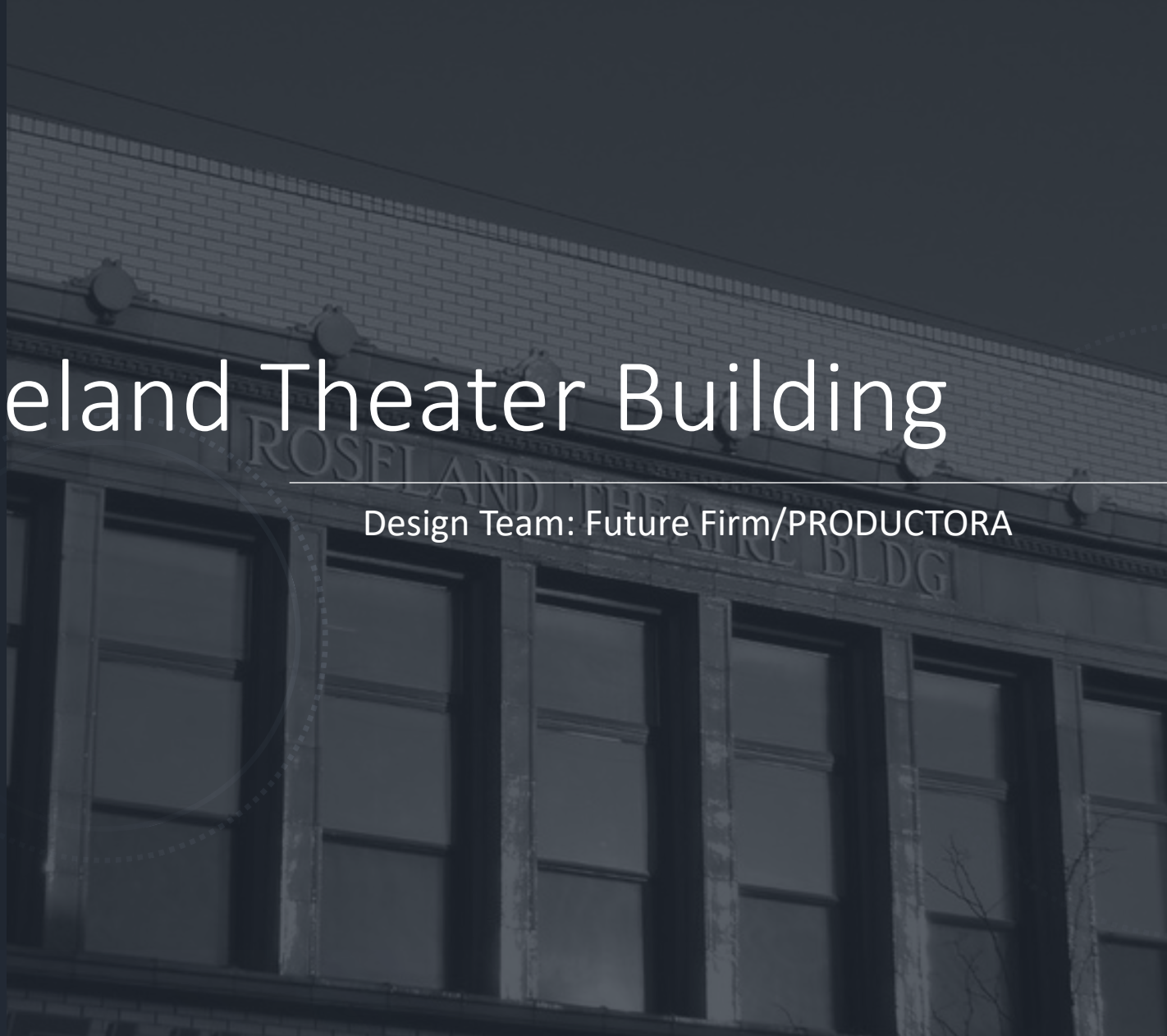


**Lawrence and Austin** Jefferson Park



# Site 2– Roseland Theater Building

Design Team: Future Firm/PRODUCTORA



## Architectural Team



### Future Firm

Architecture and Design Research. Chicago IL.



### PRODUCTORA

Mexico City based architectural studio founded by Abel Perles, Carlos Bedoya, Victor Jaime and Wonne Ickx.

## Projects



### Bronzeville Winery

A restaurant featuring art, wine, and music in Chicago's South side. (2022)



### Rooftop Prim

A lightweight metal structure located on the rooftop of an early 20th century palace. Mexico City (2020).



### Silverroom

Boutique and community space in Hyde Park, Chicago IL. (2020)



### Laguna

A factory's recovery into the vibrant complex that currently houses more than 25 firms. Mexico City (2018)

## Projects



### Equity Arts

A home for BIPOC artists, creatives, and community in Wicker Park, Chicago IL. (In Progress)



### New Headquarters of Houston Endowment

A highly energy efficient office building. Houston, TX (2019)



### Nike School Chicago

"Student Union" for Nike School Chicago in Chicago IL. (2022)



### Teopanzolco Cultural Center

A new Cultural Center next to a pre-Hispanic archaeological site. Morelos, Mexico (2017)

# Site 3—Michigan Station

Design Team: Gensler/Beehyve



# DESIGN TEAM



**Andre Brumfield**

Principal, Global Director Cities + Urban Design

Principal-In-Charge + Design Director



**Deon Lucas**

Partner



**Aaron May**

Project Manager



**Yinan Wu**

Urban Designer/Architect



**Bryan Hudson**

Partner



**Tina Chui**

Associate Partner of Technical Design



**Jason Pugh**

Principal, Global Director Diversity Equity & Inclusion

Senior Urban Designer + Architect



**Julie O'Brochta**

Project Architect/Urban Designer



**Yara Taha**

Associate Partner of Design



# Project Experience



The AVE  
Chicago, IL



Woodlawn Station  
Chicago, IL



Roosevelt Square Redevelopment Plan  
Chicago, IL



Lawndale Children's Discovery Center  
Chicago, IL



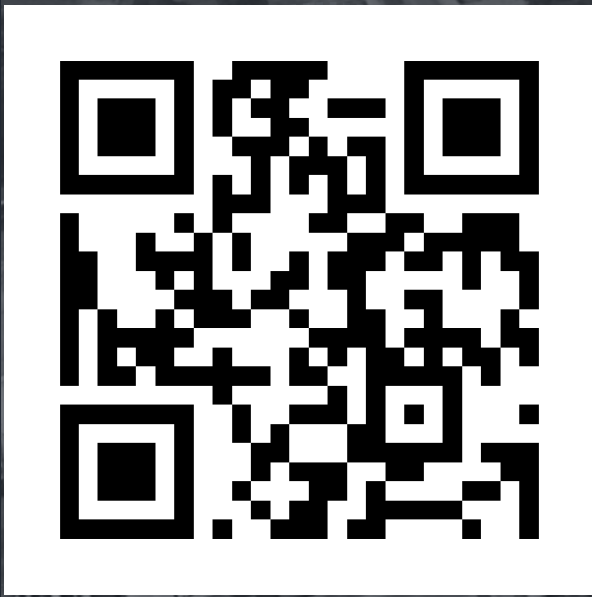
Southbridge Redevelopment Plan  
Chicago, IL



# Continue the Conversation!

---

Take our Community  
Survey!



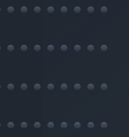
<https://arcg.is/TqOuf0>

Email Us!

[RoselandRising@gmail.com](mailto:RoselandRising@gmail.com)

Read more about  
Roseland Rising here:  
<https://tinyurl.com/RoselandRising>

# Q & A





Thank You!

# Roseland Rising

Meet the Developers Meeting

April 19, 2023