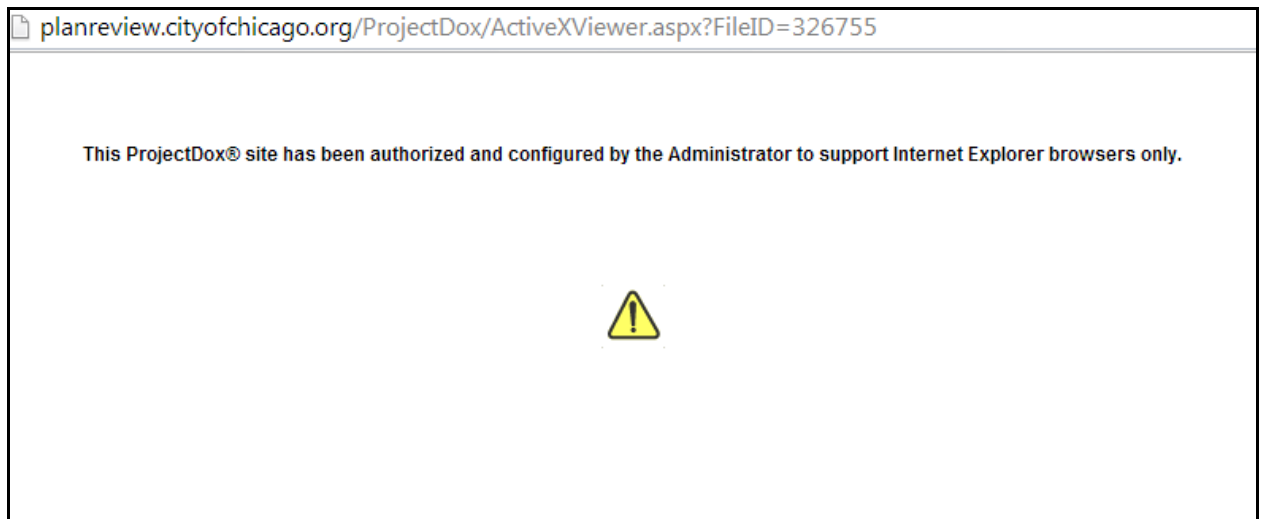


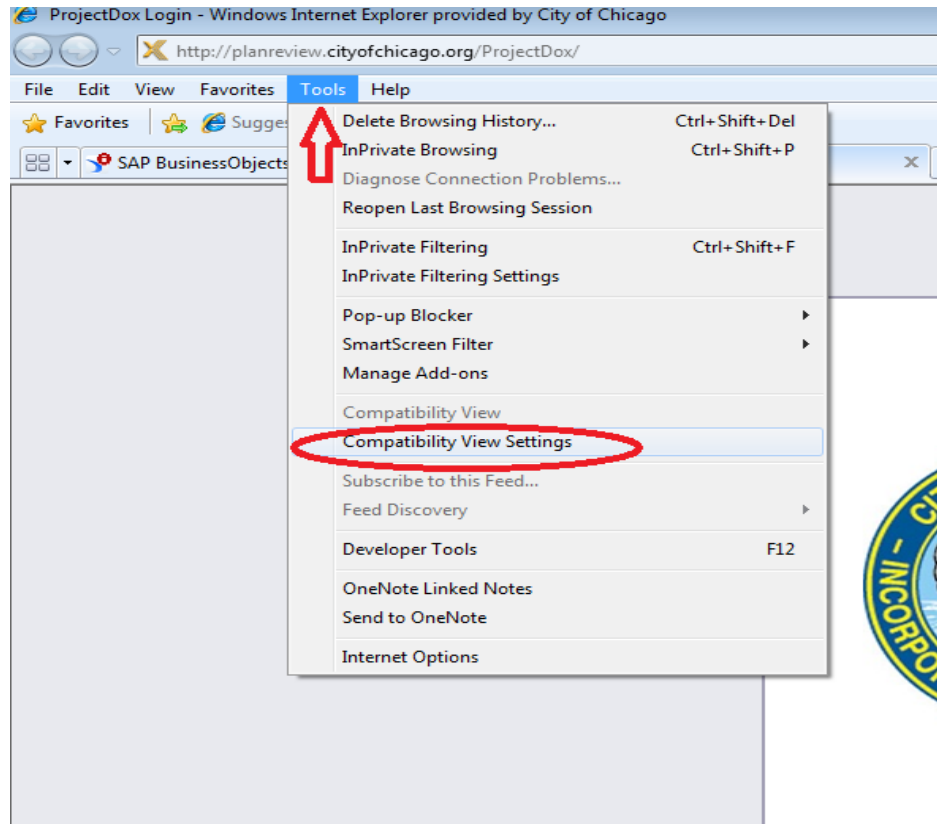
**ProjectDox is fully compatible with Internet Explorer browser only. All versions of Internet Explorer (32 bit or 64 bit - version 8 and above) work well with ProjectDox. If you are using Internet Explorer and is having trouble with viewing drawings please follow the instructions below. Other browsers can be used for looking up project status and running reports but non-IE browsers will not allow you to view drawings and markups.**

**Error Fix For Viewing Drawings:**

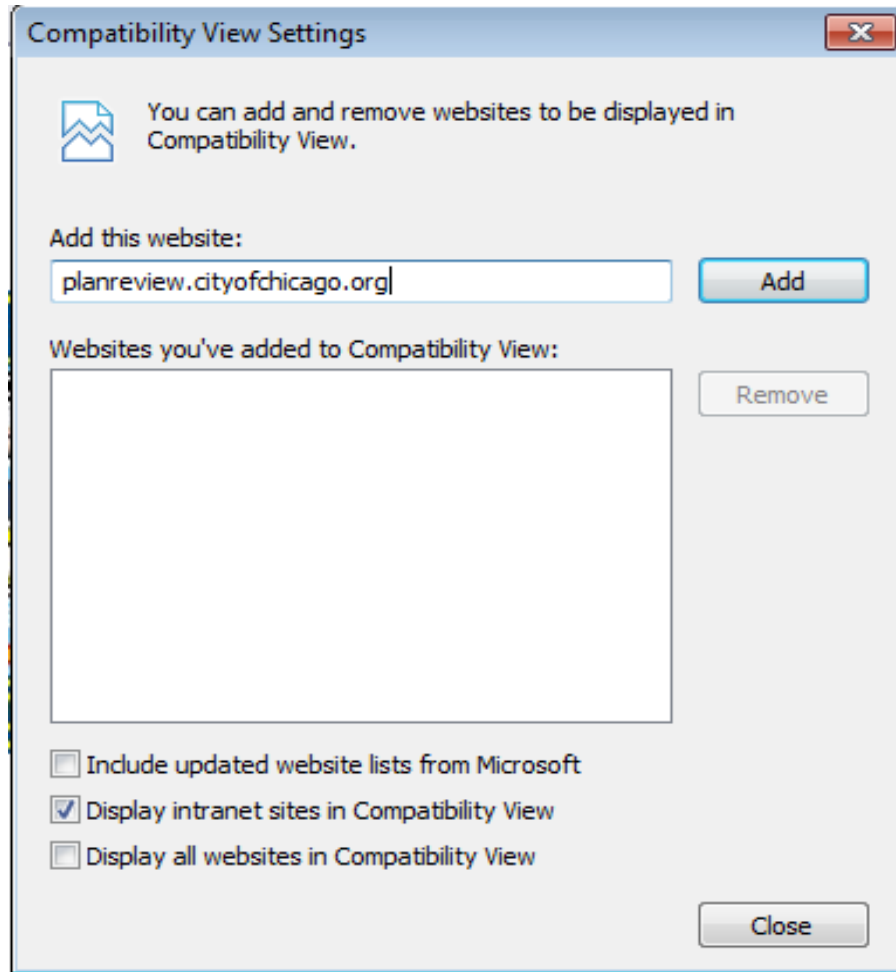
1. Please Make Sure To Be Using Internet Explorer
2. If You Are Currently Receiving This Error when attempting to view a drawing:



3. Please Follow These Steps First:
  - In Internet Explorer Select **Tools** menu And **Compatibility View Settings**



- When The **Compatibility View Settings** Come Up In The *"Add this website:"* box enter **Planreview.cityofchicago.org** and hit Add as shown below:



- Your Settings Should Now Look Like This, Click Close and restart Internet Explorer:

Compatibility View Settings



You can add and remove websites to be displayed in Compatibility View.

Add this website:

Add

Websites you've added to Compatibility View:

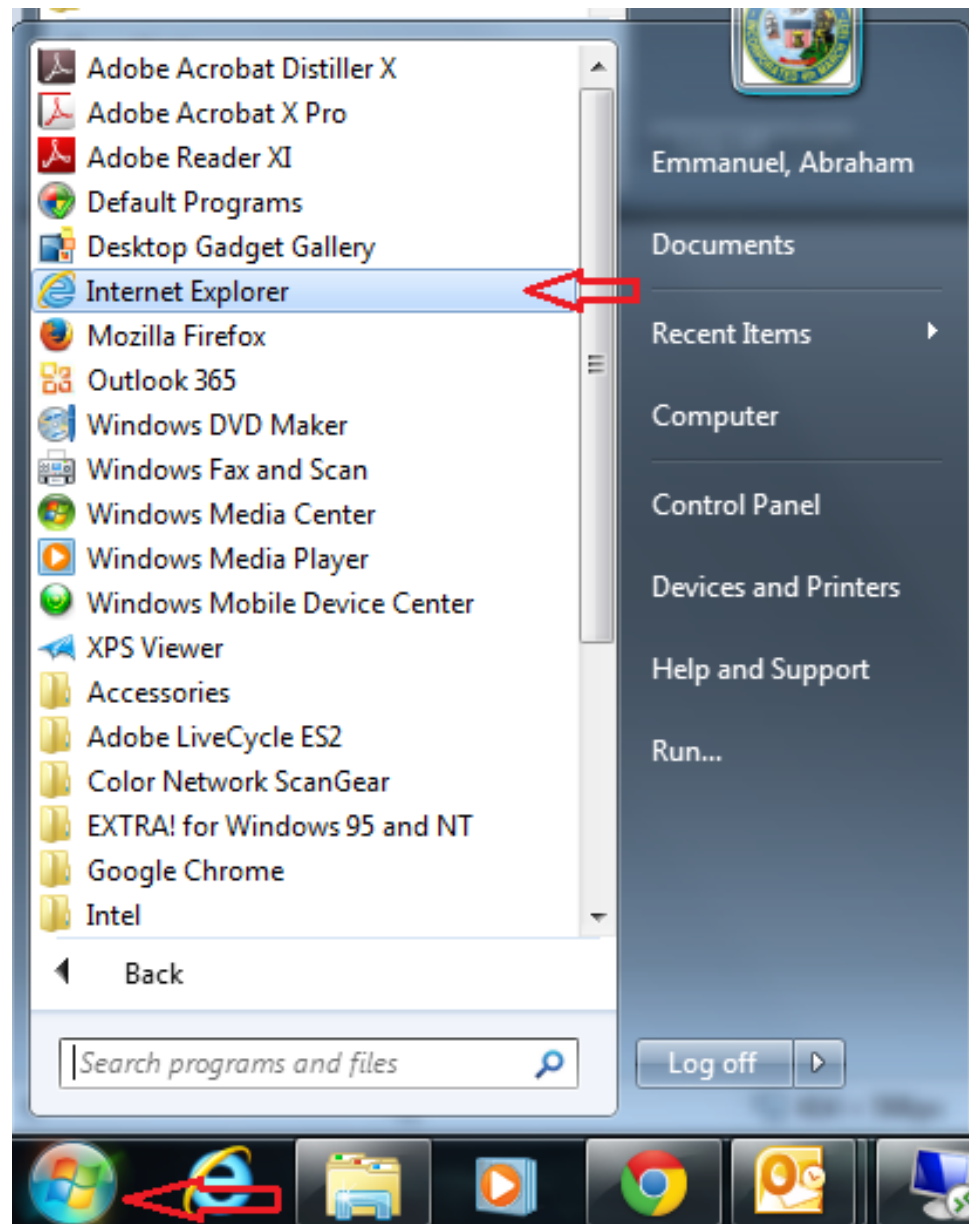
cityofchicago.org

Remove

- Include updated website lists from Microsoft
- Display intranet sites in Compatibility View
- Display all websites in Compatibility View

Close

- Now for starting Internet Explorer, click on the start button on the bottom left of the screen and select the Internet Explorer icon:



- Then Right Click on Internet Explorer icon and click on **“Run as Administrator”**, Start up the Internet Explorer browser and check if the issue has been resolved:

