

PROJECT IDENTITY OVERVIEW

MIXED USE: RAIL EMBANKMENT - ROOSEVELT ROAD

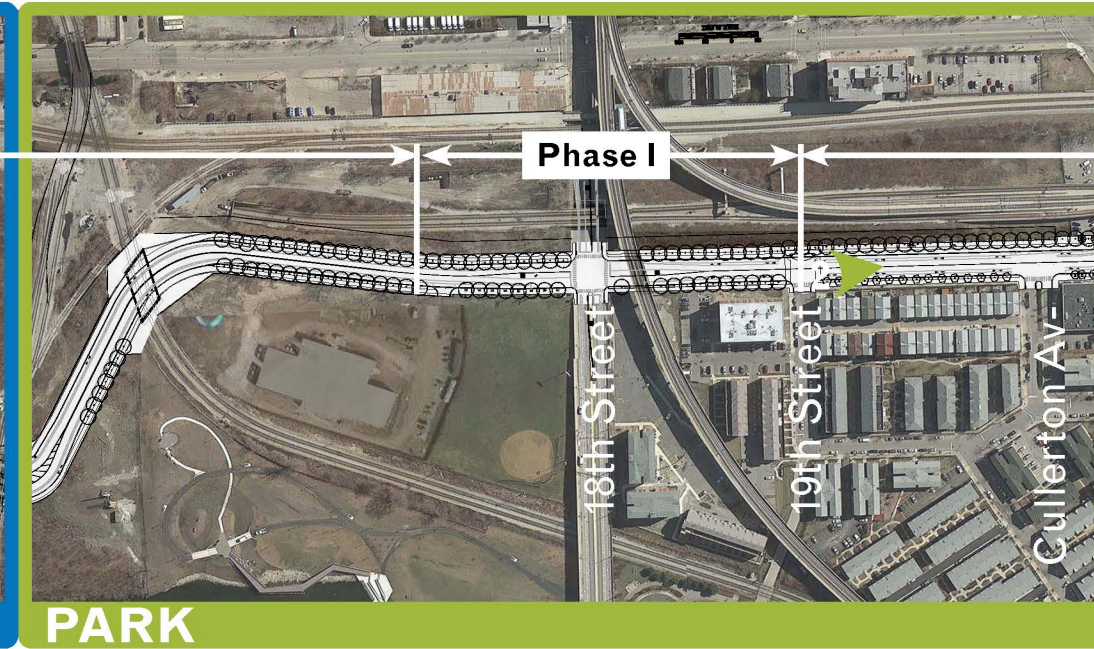
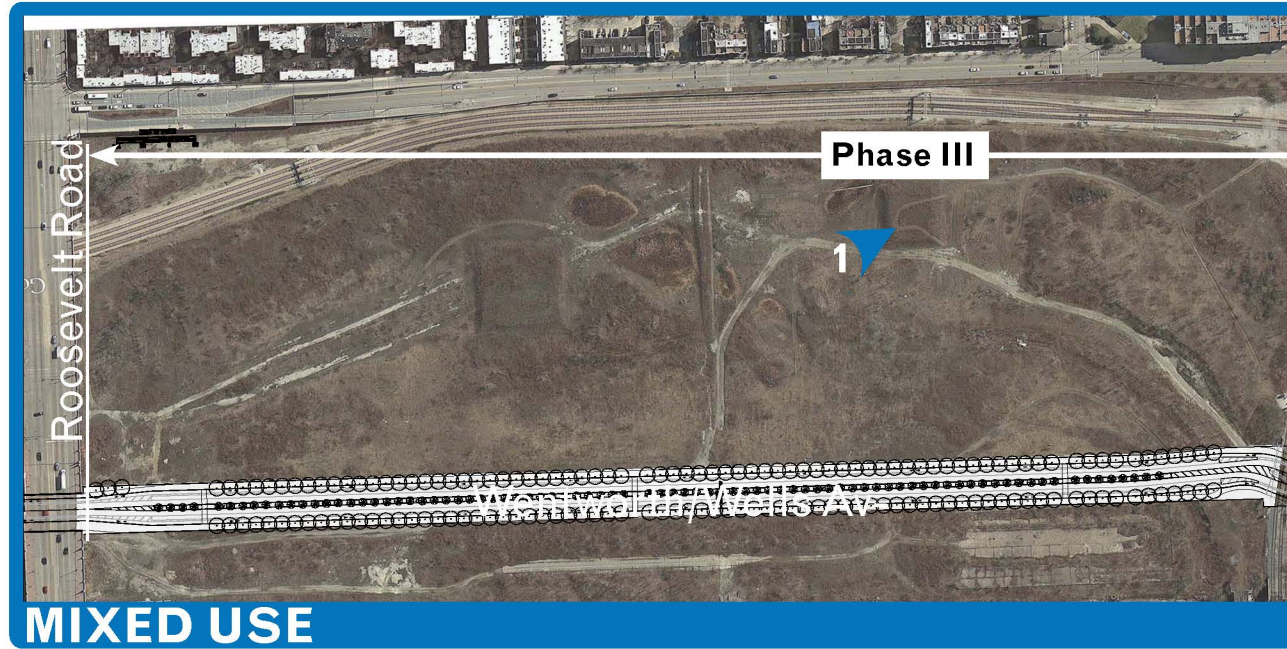
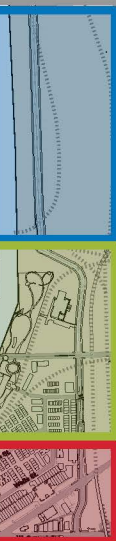
Wells Wentworth Connector will **SPUR DEVELOPMENT** to the Riverside District Property

PARK: CULLERTON - RAIL EMBANKMENT

Bounded by the eastern CTA Rail Embankment, this stretch contains the entry to the landmark **PING TOM PARK**.

COMMERCE: CERMAK - CULLERTON

The extent of **CHINATOWN'S RETAIL** space currently stops at Cullerton Avenue. The proposed corridor is expected to have **HEAVY PEDESTRIAN** counts with patrons making their way from north to south, and access to the CTA red line.



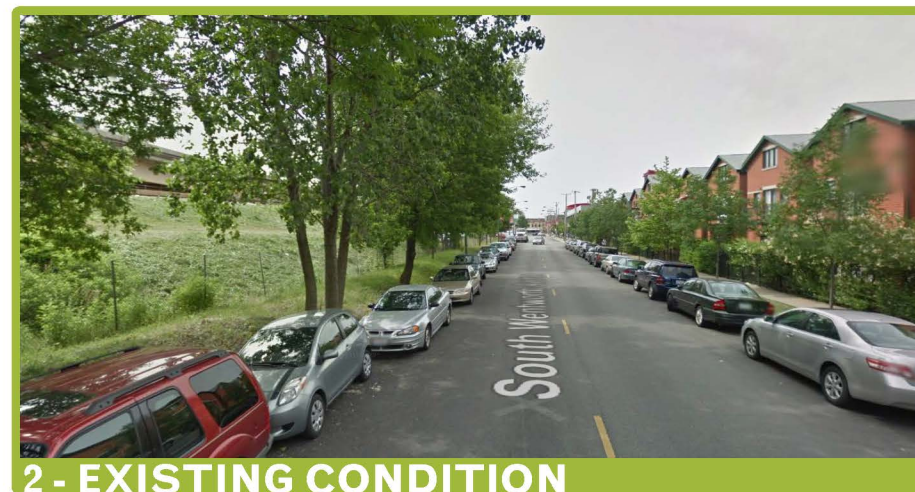
MIXED USE

PARK

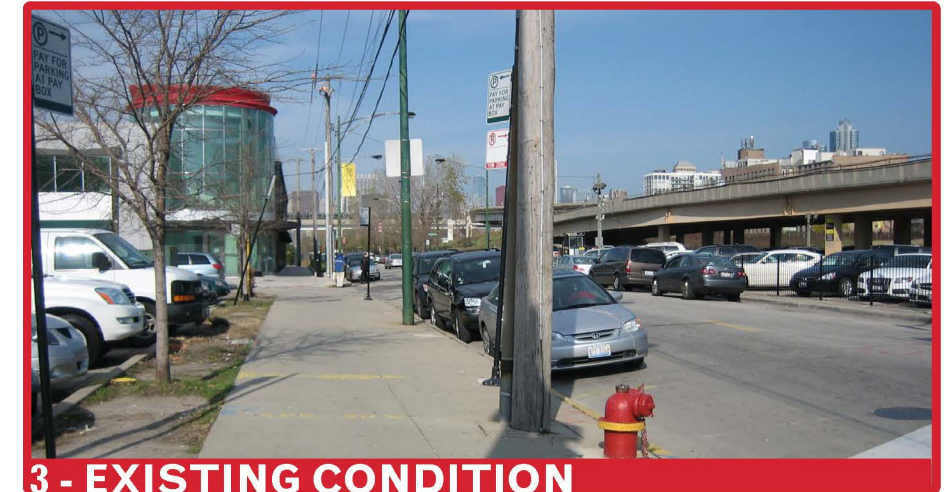
COMMERCE



1 - EXISTING CONDITION



2 - EXISTING CONDITION



3 - EXISTING CONDITION