

#6 South Side

The retail concentration around 87th and the Dan Ryan in the Chatham community that includes Walmart, Lowe's and several grocery stores is one of the most significant on the South Side. The Ashland and Halsted corridors are among the important retail corridors in this submarket providing retail offerings to residents of the Englewood, West Englewood, and Auburn-Gresham communities.

Demographics

	2000	2010	2012*
Population	229,481	190,820	191,542
Households	70,548	63,264	63,105
Median HH Income*			\$30,212

Median Age	34.5
1 Person Households	16,650 26.3%
All Households with Children	25,275 40.0%
All Households 65+	17,460 27.6%

Square Miles	18.0
Population Density per Square Mile	10,641
SF of Land in Parcels Zoned B, C, D & BPD	36.8M
SF of Ground Floor Area Zoned B, C, D & BPD	9.8M
Total Employment	37,390

Source: US Census Bureau, Esri, Dun & Bradstreet *2012 Estimate

Submarket Inventory

Shopping Centers

4 community centers with more than 125,000 SF:
Chatham Market, Westport Commons, Chatham Ridge, 87th Street Center

4 neighborhood centers with 30,000 to 125,000 SF:
Englewood Plaza, West Chatham Plaza, Sherman Plaza, Eastwood Shopping Center

Big Box Retailers

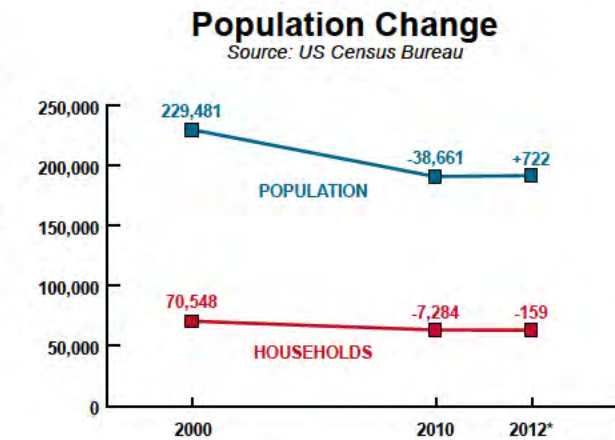
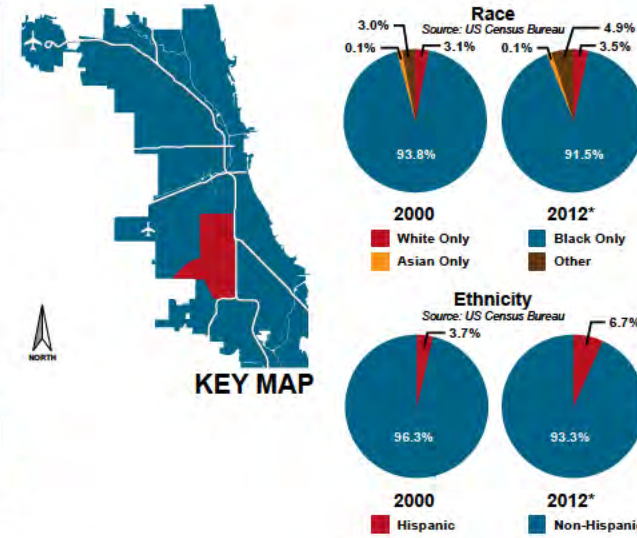
- 1 Home Depot
- 1 Lowe's
- 1 Walmart

Grocery Stores

- 4 ALDI
- 2 Food 4 Less
- 2 Jewel-Osco
- 1 Save-a-Lot
- 1 Ultra Foods

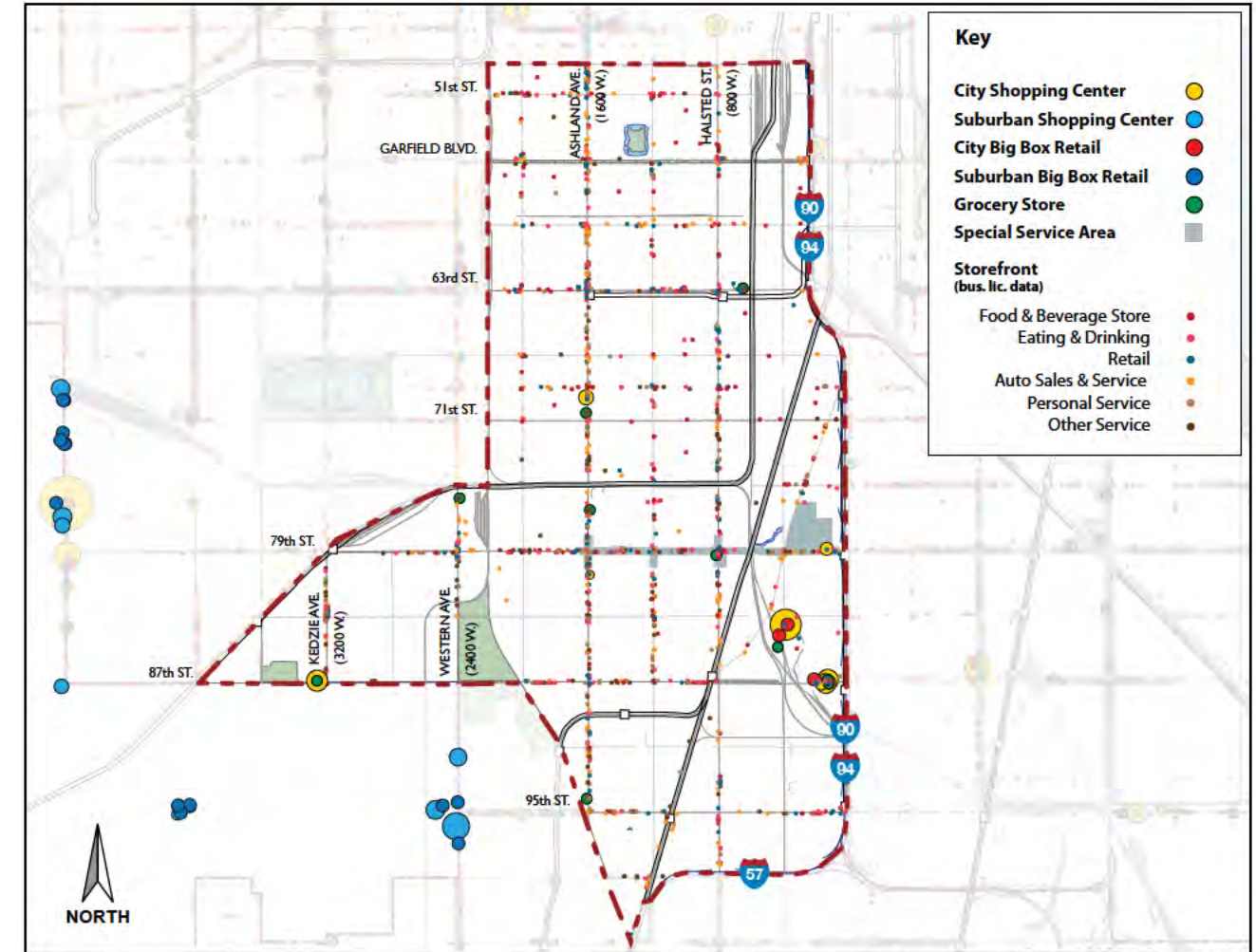
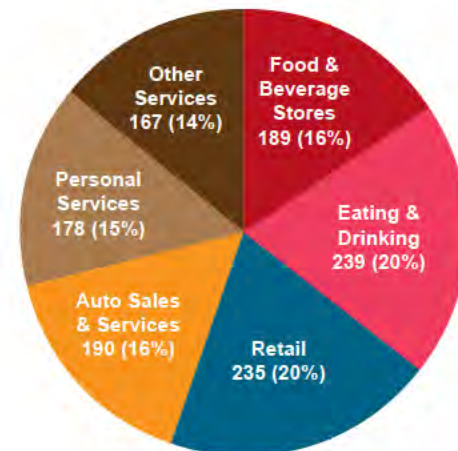
Special Service Areas

- Auburn Grishem - 79th Street #32



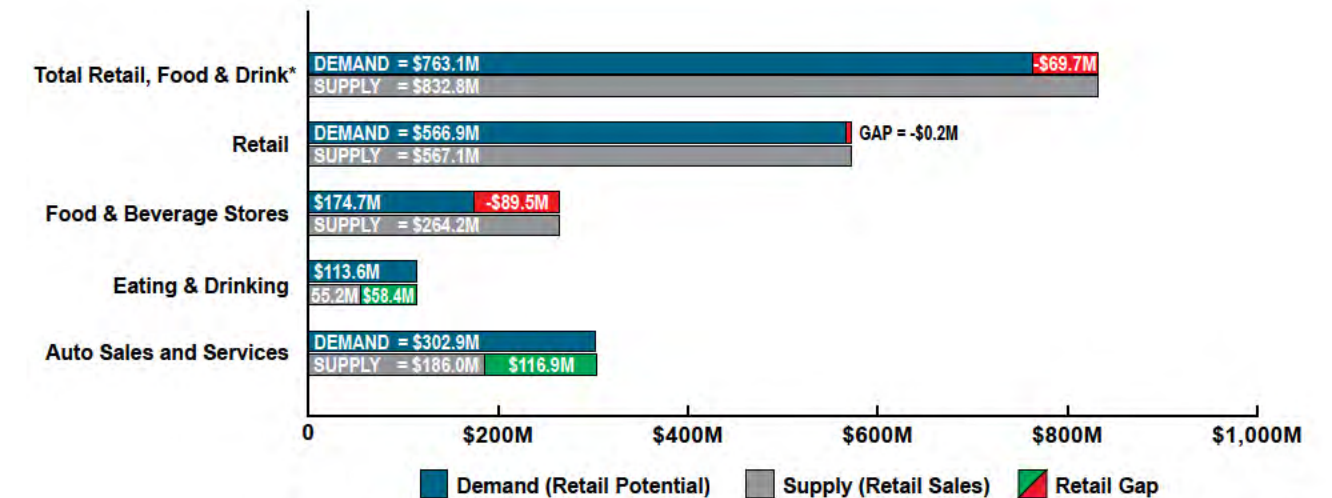
Submarket Business Licenses

Source: City of Chicago



Submarket Inventory Map

Submarket Gap Analysis



*Excludes Non-store Retailers and Auto Sales and Services

Source: Esri Business Analyst